

Development Site

Lot 73-A-2-2, East Causeway Approach Mandeville, LA 70448

PROPERTY SUMMARY



Property Description

Development lot available in the heart of Old Mandeville.

Property Highlights

- Located across from Walmart Neighborhood Market.
- Suitable for QSR, retail, office, medical.

Offering Summary

Sale Price:	\$420,000 (\$11.00/SF)
Lot Size:	0.88 Acres (38,128 SF)
Zoning:	B-1

Demographics	1 Mile	3 Miles	5 Miles
Total Households	1,955	12,110	21,234
Total Population	4,969	32,862	57,376
Average HH Income	\$94,605	\$101,397	\$96,762

Matthew Pittman, CCIM
504.322.1275
mpittman@beaubox.com

Broker of Record, Beau J. Box; Licensed by the Louisiana Real Estate Commission, Mississippi Real Estate Commission, Alabama Real Estate Commission and Florida Real Estate Commission, USA. This information has been secured from sources we believe to be reliable, but we make no representations or warranties, expressed or implied, as to the accuracy of the information. References to square footage or age are approximate. Buyer must verify the information and bears all risk for any inaccuracies. © Beau Box Commercial Real Estate. 5500 Bankers Avenue, Baton Rouge, LA 70808 | 225-237-3343. | January 13, 2024



Development Site

Lot 73-A-2-2, East Causeway Approach Mandeville, LA 70448

SURROUNDING RETAIL



Matthew Pittman, CCIM
504.322.1275
mpittman@beaubox.com

Broker of Record, Beau J. Box; Licensed by the Louisiana Real Estate Commission, Mississippi Real Estate Commission, Alabama Real Estate Commission and Florida Real Estate Commission, USA. This information has been secured from sources we believe to be reliable, but we make no representations or warranties, expressed or implied, as to the accuracy of the information. References to square footage or age are approximate. Buyer must verify the information and bears all risk for any inaccuracies. © Beau Box Commercial Real Estate. 5500 Bankers Avenue, Baton Rouge, LA 70808 | 225-237-3343. | January 13, 2024



Development Site

Lot 73-A-2-2, East Causeway Approach Mandeville, LA 70448

ADDITIONAL PHOTOS



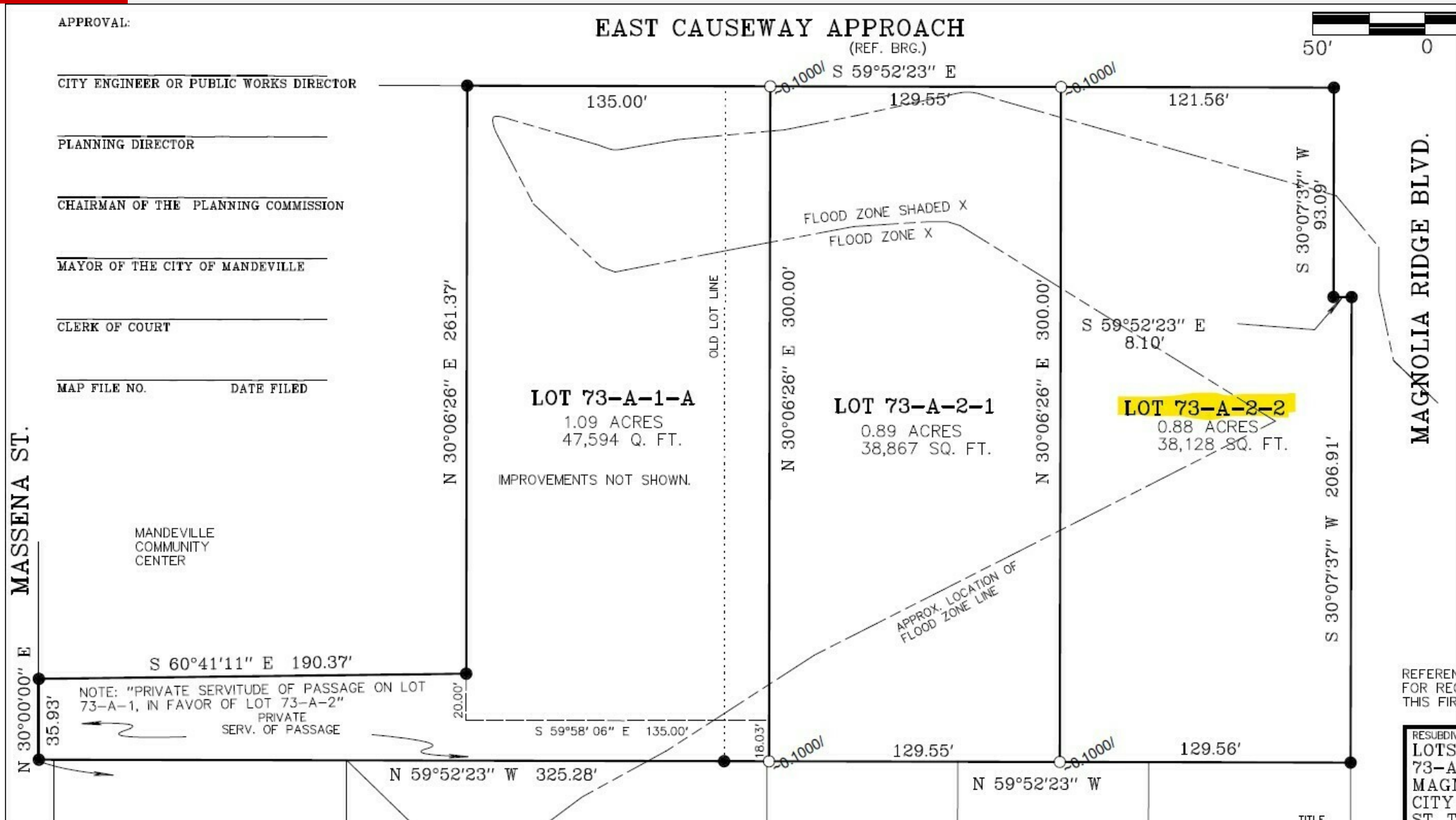
Matthew Pittman, CCIM
504.322.1275
mpittman@beaubox.com

Broker of Record, Beau J. Box; Licensed by the Louisiana Real Estate Commission, Mississippi Real Estate Commission, Alabama Real Estate Commission and Florida Real Estate Commission, USA. This information has been secured from sources we believe to be reliable, but we make no representations or warranties, expressed or implied, as to the accuracy of the information. References to square footage or age are approximate. Buyer must verify the information and bears all risk for any inaccuracies. © Beau Box Commercial Real Estate. 5500 Bankers Avenue, Baton Rouge, LA 70808 | 225-237-3343. | January 13, 2024



Development Site
Lot 73-A-2-2, East Causeway Approach Mandeville, LA 70448

SURVEY



Matthew Pittman, CCIM
504.322.1275
mpittman@beaubox.com

Broker of Record, Beau J. Box; Licensed by the Louisiana Real Estate Commission, Mississippi Real Estate Commission, Alabama Real Estate Commission and Florida Real Estate Commission, USA. This information has been secured from sources we believe to be reliable, but we make no representations or warranties, expressed or implied, as to the accuracy of the information. References to square footage or age are approximate. Buyer must verify the information and bears all risk for any inaccuracies. © Beau Box Commercial Real Estate. 5500 Bankers Avenue, Baton Rouge, LA 70808 | 225-237-3343. | January 13, 2024

