

Lot 15-A1, Hwy 190 & Greenleaves Blvd. Mandeville, LA 70448

PROPERTY SUMMARY



Property Description

Development lot located in a suburban setting.

Property Highlights

- Located in the heart of Mandeville with some of the best demographics in the State.
- Suitable for office, medical, retail use.

Offering Summary

Sale Price:	\$585,000
Lot Size:	1.32 Acres
Zoning:	HC-1

Demographics	1 Mile	3 Miles	5 Miles
Total Households	2,169	13,029	22,566
Total Population	5,790	35,245	60,802
Average HH Income	\$107,855	\$101,314	\$95,520

Matthew Pittman, CCIM

504.322.1275

mpittman@beaibox.com

Broker of Record, Beau J. Box; Licensed by the Louisiana Real Estate Commission, Mississippi Real Estate Commission, Alabama Real Estate Commission and Florida Real Estate Commission, USA. This information has been secured from sources we believe to be reliable, but we make no representations or warranties, expressed or implied, as to the accuracy of the information. References to square footage or age are approximate. Buyer must verify the information and bears all risk for any inaccuracies. © Beau Box Commercial Real Estate. | February 14, 2022



Lot 15-A1, Hwy 190 & Greenleaves Blvd. Mandeville, LA 70448

ADDITIONAL PHOTOS



Matthew Pittman, CCIM
504.322.1275
mpittman@beaubox.com

Broker of Record, Beau J. Box; Licensed by the Louisiana Real Estate Commission, Mississippi Real Estate Commission, Alabama Real Estate Commission and Florida Real Estate Commission, USA. This information has been secured from sources we believe to be reliable, but we make no representations or warranties, expressed or implied, as to the accuracy of the information. References to square footage or age are approximate. Buyer must verify the information and bears all risk for any inaccuracies. © Beau Box Commercial Real Estate. | February 14, 2022



**Lot 15-A1, Hwy 190 & Greenleaves Blvd.
Mandeville, LA 70448**

CONCEPTUAL SITE PLAN



Matthew Pittman, CCIM
504.322.1275
mpittman@beaubox.com

Broker of Record, Beau J. Box; Licensed by the Louisiana Real Estate Commission, Mississippi Real Estate Commission, Alabama Real Estate Commission and Florida Real Estate Commission, USA. This information has been secured from sources we believe to be reliable, but we make no representations or warranties, expressed or implied, as to the accuracy of the information. References to square footage or age are approximate. Buyer must verify the information and bears all risk for any inaccuracies. © Beau Box Commercial Real Estate. | February 14, 2022



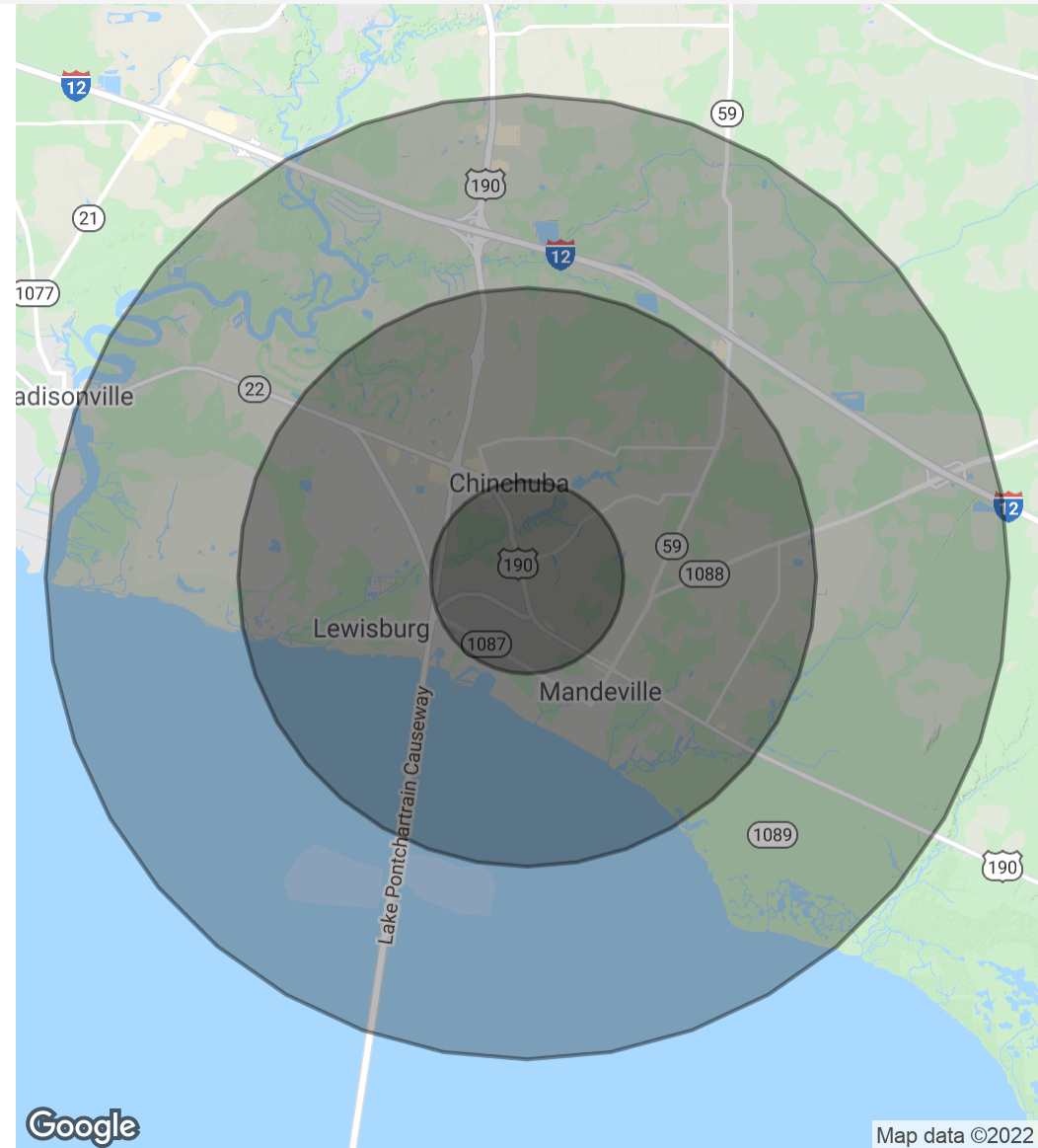
Lot 15-A1, Hwy 190 & Greenleaves Blvd. Mandeville, LA 70448

DEMOGRAPHICS MAP & REPORT

Population	1 Mile	3 Miles	5 Miles
Total Population	5,790	35,245	60,802
Average Age	43.3	41.1	40.1
Average Age (Male)	42.5	39.3	38.2
Average Age (Female)	43.7	42.2	41.4

Households & Income	1 Mile	3 Miles	5 Miles
Total Households	2,169	13,029	22,566
# Of Persons Per HH	2.7	2.7	2.7
Average HH Income	\$107,855	\$101,314	\$95,520
Average House Value	\$307,949	\$314,079	\$318,200

** Demographic data derived from 2010 US Census*



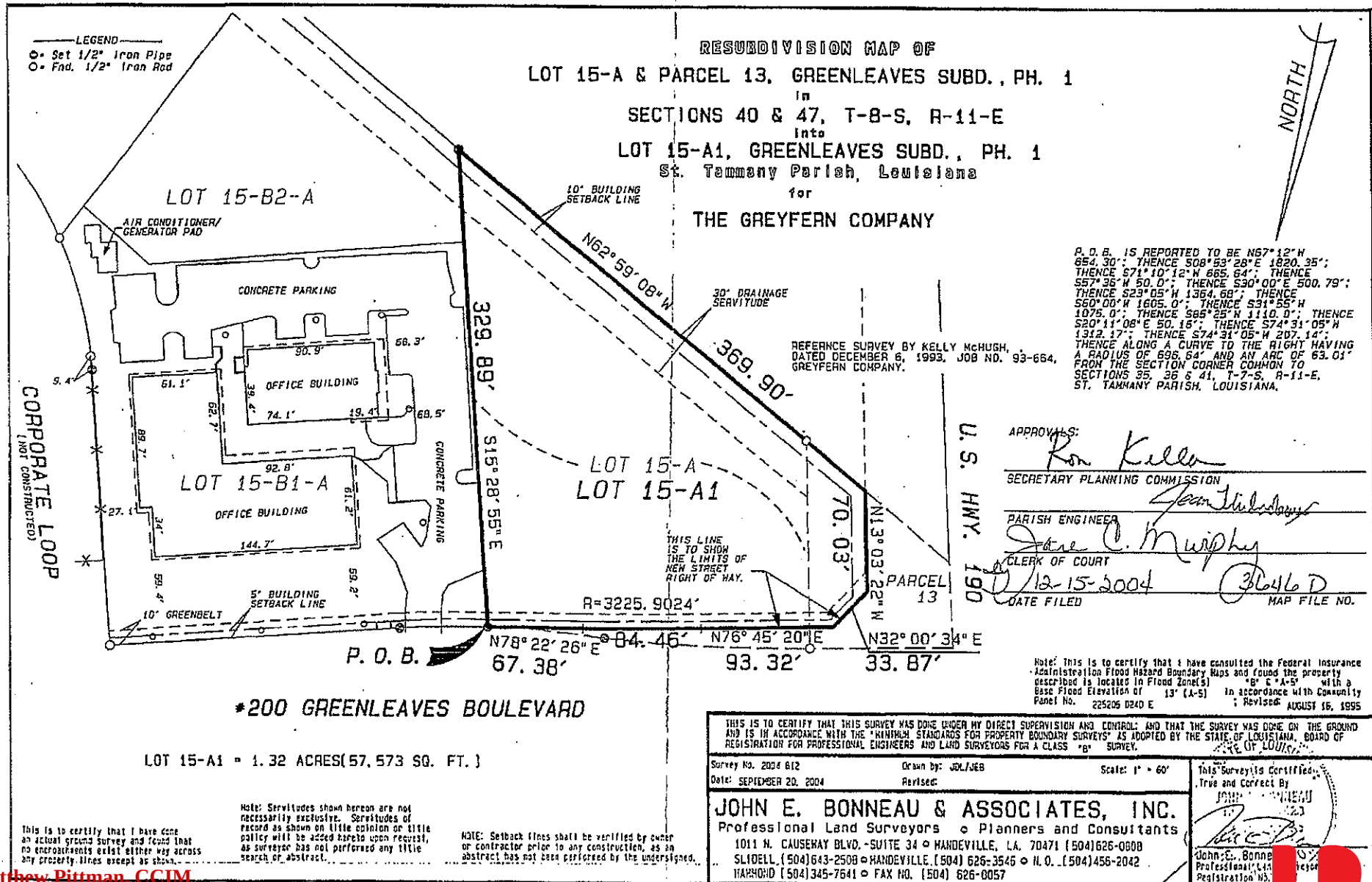
Matthew Pittman, CCIM
504.322.1275
mpittman@beaibox.com

Broker of Record, Beau J. Box; Licensed by the Louisiana Real Estate Commission, Mississippi Real Estate Commission, Alabama Real Estate Commission and Florida Real Estate Commission, USA. This information has been secured from sources we believe to be reliable, but we make no representations or warranties, expressed or implied, as to the accuracy of the information. References to square footage or age are approximate. Buyer must verify the information and bears all risk for any inaccuracies. © Beau Box Commercial Real Estate. | February 14, 2022



Lot 15-A1, Hwy 190 & Greenleaves Blvd.
Mandeville, LA 70448

SURVEY



Matthew Pittman, CCIM
 504.322.1275
 mpittman@beaubox.com

Broker of Record, Beau J. Box; Licensed by the Louisiana Real Estate Commission, Mississippi Real Estate Commission, Alabama Real Estate Commission and Florida Real Estate Commission, USA. This information has been secured from sources we believe to be reliable, but we make no representations or warranties, expressed or implied, as to the accuracy of the information. References to square footage or age are approximate. Buyer must verify the information and bears all risk for any inaccuracies. © Beau Box Commercial Real Estate. | February 14, 2022

