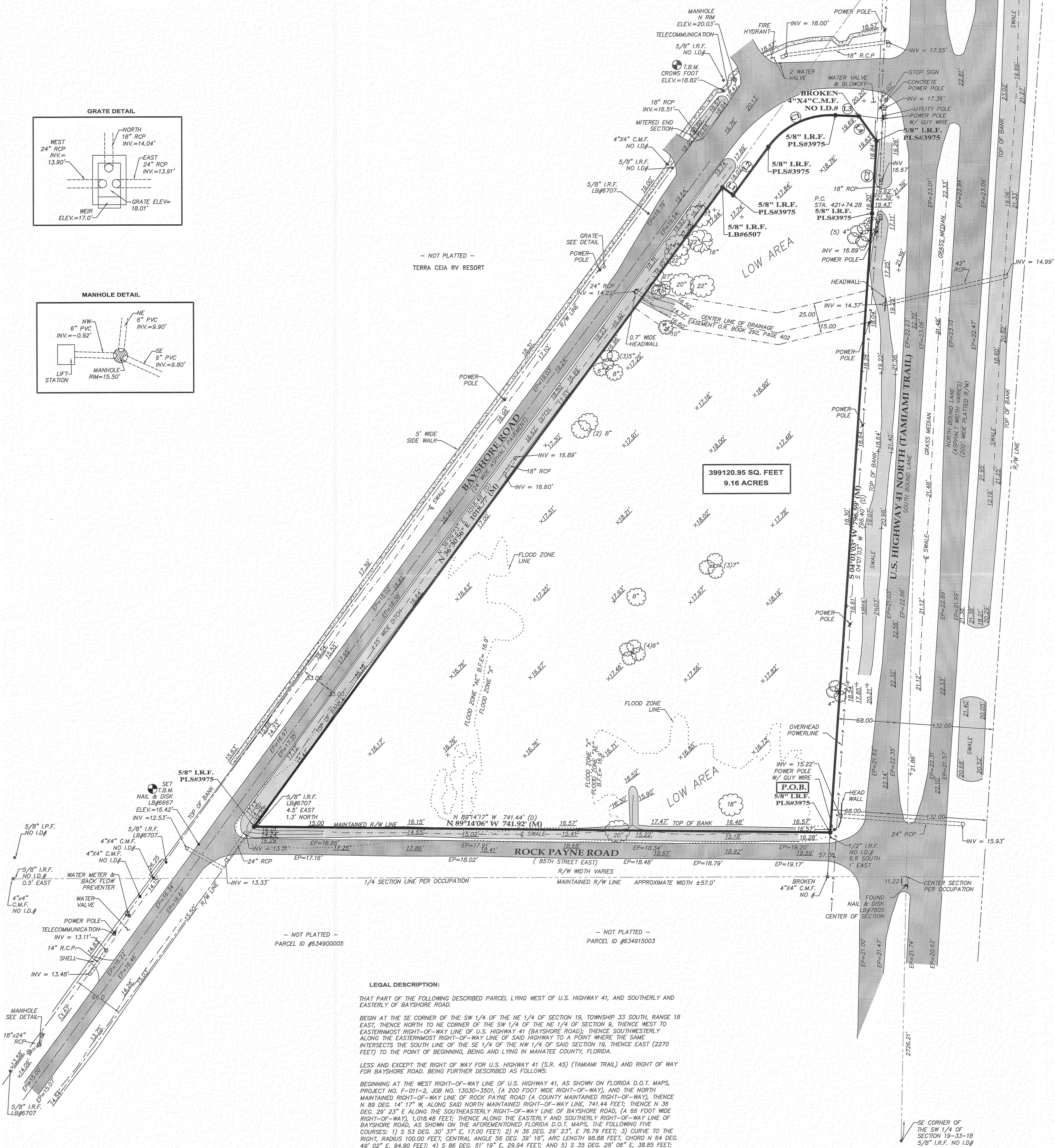
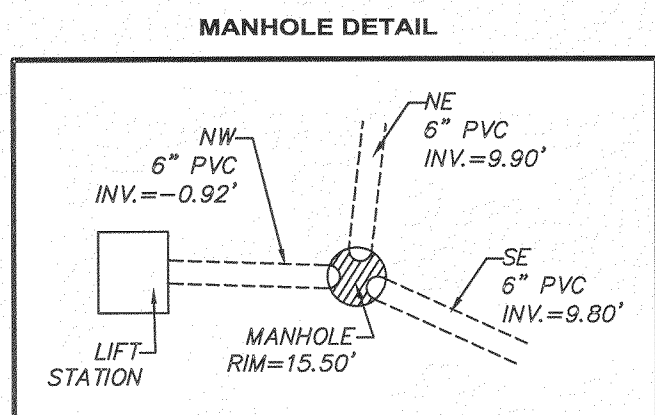
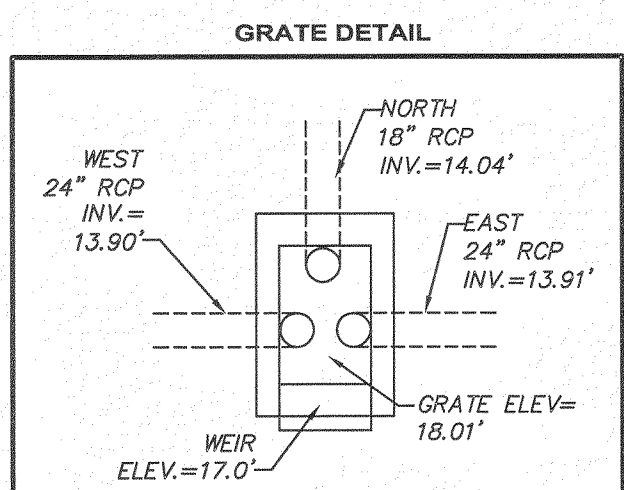


CURVE TABLE

LINE TABLE

LEGAL DESCRIPTION:

BEGIN AT THE SE CORNER OF THE SW 1/4 OF THE NE 1/4 OF SECTION 19, TOWNSHIP 33 SOUTH, RANGE 18 EAST, THENCE NORTH TO NE CORNER OF THE SW 1/4 OF THE NE 1/4 OF SECTION 9, THENCE WEST TO EASTERNMOST RIGHT-OF-WAY LINE OF U.S. HIGHWAY 41 (BAYSHORE ROAD); THENCE SOUTHWESTERLY ALONG THE EASTERNMOST RIGHT-OF-WAY LINE OF SAID HIGHWAY TO A POINT WHERE THE SAME INTERSECTS THE SOUTH LINE OF THE SE 1/4 OF THE NW 1/4 OF SAID SECTION 19, THENCE EAST (2270 FEET) TO THE POINT OF BEGINNING, BEING AND LYING IN MANATEE COUNTY, FLORIDA.

BEING AT THE WEST RT-OF-WAY LINE OF U.S. HIGHWAY 41, AS SHOWN ON FLORIDA D.O.T. MAPS, PROJECT NO. F-01-21. JOB NO. 13030-350, (A 200 FOOT WIDE RIGHT-OF-WAY), AND THE NORTH MAINTAINED RIGHT-OF-WAY LINE OF ROCK PAYNE ROAD (A COUNTY MAINTAINED RIGHT-OF-WAY), THENCE 28° 07' 00" N 03° 30' 00" E 110.00 FEET, THENCE 28° 07' 00" N 03° 30' 00" E 110.00 FEET, THENCE 28° 23' E ALONG THE SOUTHEASTERLY RIGHT-OF-WAY LINE OF BAYSHORE ROAD, (A 65 FEET WIDE RIGHT-OF-WAY), 1,018.48 FEET; THENCE ALONG THE EASTERLY AND SOUTHERLY RIGHT-OF-WAY LINE OF BAYSHORE ROAD, AS SHOWN ON THE AFORESAID FLORIDA D.O.T. MAPS, THE FOLLOWING VISE: 1) S 88° 51' 19" E, 29.84 FEET; 2) S 35° 28' 06" E, 38.88 FEET; 3) S 88° 51' 19" E, 29.84 FEET; 4) S 88° 51' 19" E, 29.84 FEET; 5) S 35° 28' 06" E, 38.88 FEET; 6) S 88° 51' 19" E, 29.84 FEET; 7) S 35° 28' 06" E, 38.88 FEET; 8) S 88° 51' 19" E, 29.84 FEET; 9) S 35° 28' 06" E, 38.88 FEET; 10) S 88° 51' 19" E, 29.84 FEET; 11) S 35° 28' 06" E, 38.88 FEET; 12) S 88° 51' 19" E, 29.84 FEET; 13) S 35° 28' 06" E, 38.88 FEET; 14) S 88° 51' 19" E, 29.84 FEET; 15) S 35° 28' 06" E, 38.88 FEET; 16) S 88° 51' 19" E, 29.84 FEET; 17) S 35° 28' 06" E, 38.88 FEET; 18) S 88° 51' 19" E, 29.84 FEET; 19) S 35° 28' 06" E, 38.88 FEET; 20) S 88° 51' 19" E, 29.84 FEET; 21) S 35° 28' 06" E, 38.88 FEET; 22) S 88° 51' 19" E, 29.84 FEET; 23) S 35° 28' 06" E, 38.88 FEET; 24) S 88° 51' 19" E, 29.84 FEET; 25) S 35° 28' 06" E, 38.88 FEET; 26) S 88° 51' 19" E, 29.84 FEET; 27) S 35° 28' 06" E, 38.88 FEET; 28) S 88° 51' 19" E, 29.84 FEET; 29) S 35° 28' 06" E, 38.88 FEET; 30) S 88° 51' 19" E, 29.84 FEET; 31) S 35° 28' 06" E, 38.88 FEET; 32) S 88° 51' 19" E, 29.84 FEET; 33) S 35° 28' 06" E, 38.88 FEET; 34) S 88° 51' 19" E, 29.84 FEET; 35) S 35° 28' 06" E, 38.88 FEET; 36) S 88° 51' 19" E, 29.84 FEET; 37) S 35° 28' 06" E, 38.88 FEET; 38) S 88° 51' 19" E, 29.84 FEET; 39) S 35° 28' 06" E, 38.88 FEET; 40) S 88° 51' 19" E, 29.84 FEET; 41) S 35° 28' 06" E, 38.88 FEET; 42) S 88° 51' 19" E, 29.84 FEET; 43) S 35° 28' 06" E, 38.88 FEET; 44) S 88° 51' 19" E, 29.84 FEET; 45) S 35° 28' 06" E, 38.88 FEET; 46) S 88° 51' 19" E, 29.84 FEET; 47) S 35° 28' 06" E, 38.88 FEET; 48) S 88° 51' 19" E, 29.84 FEET; 49) S 35° 28' 06" E, 38.88 FEET; 50) S 88° 51' 19" E, 29.84 FEET; 51) S 35° 28' 06" E, 38.88 FEET; 52) S 88° 51' 19" E, 29.84 FEET; 53) S 35° 28' 06" E, 38.88 FEET; 54) S 88° 51' 19" E, 29.84 FEET; 55) S 35° 28' 06" E, 38.88 FEET; 56) S 88° 51' 19" E, 29.84 FEET; 57) S 35° 28' 06" E, 38.88 FEET; 58) S 88° 51' 19" E, 29.84 FEET; 59) S 35° 28' 06" E, 38.88 FEET; 60) S 88° 51' 19" E, 29.84 FEET; 61) S 35° 28' 06" E, 38.88 FEET; 62) S 88° 51' 19" E, 29.84 FEET; 63) S 35° 28' 06" E, 38.88 FEET; 64) S 88° 51' 19" E, 29.84 FEET; 65) S 35° 28' 06" E, 38.88 FEET; 66) S 88° 51' 19" E, 29.84 FEET; 67) S 35° 28' 06" E, 38.88 FEET; 68) S 88° 51' 19" E, 29.84 FEET; 69) S 35° 28' 06" E, 38.88 FEET; 70) S 88° 51' 19" E, 29.84 FEET; 71) S 35° 28' 06" E, 38.88 FEET; 72) S 88° 51' 19" E, 29.84 FEET; 73) S 35° 28' 06" E, 38.88 FEET; 74) S 88° 51' 19" E, 29.84 FEET; 75) S 35° 28' 06" E, 38.88 FEET; 76) S 88° 51' 19" E, 29.84 FEET; 77) S 35° 28' 06" E, 38.88 FEET; 78) S 88° 51' 19" E, 29.84 FEET; 79) S 35° 28' 06" E, 38.88 FEET; 80) S 88° 51' 19" E, 29.84 FEET; 81) S 35° 28' 06" E, 38.88 FEET; 82) S 88° 51' 19" E, 29.84 FEET; 83) S 35° 28' 06" E, 38.88 FEET; 84) S 88° 51' 19" E, 29.84 FEET; 85) S 35° 28' 06" E, 38.88 FEET; 86) S 88° 51' 19" E, 29.84 FEET; 87) S 35° 28' 06" E, 38.88 FEET; 88) S 88° 51' 19" E, 29.84 FEET; 89) S 35° 28' 06" E, 38.88 FEET; 90) S 88° 51' 19" E, 29.84 FEET; 91) S 35° 28' 06" E, 38.88 FEET; 92) S 88° 51' 19" E, 29.84 FEET; 93) S 35° 28' 06" E, 38.88 FEET; 94) S 88° 51' 19" E, 29.84 FEET; 95) S 35° 28' 06" E, 38.88 FEET; 96) S 88° 51' 19" E, 29.84 FEET; 97) S 35° 28' 06" E, 38.88 FEET; 98) S 88° 51' 19" E, 29.84 FEET; 99) S 35° 28' 06" E, 38.88 FEET; 100) S 88° 51' 19" E, 29.84 FEET; 101) S 35° 28' 06" E, 38.88 FEET; 102) S 88° 51' 19" E, 29.84 FEET; 103) S 35° 28' 06" E, 38.88 FEET; 104) S 88° 51' 19" E, 29.84 FEET; 105) S 35° 28' 06" E, 38.88 FEET; 106) S 88° 51' 19" E, 29.84 FEET; 107) S 35° 28' 06" E, 38.88 FEET; 108) S 88° 51' 19" E, 29.84 FEET; 109) S 35° 28' 06" E, 38.88 FEET; 110) S 88° 51' 19" E, 29.84 FEET; 111) S 35° 28' 06" E, 38.88 FEET; 112) S 88° 51' 19" E, 29.84 FEET; 113) S 35° 28' 06" E, 38.88 FEET; 114) S 88° 51' 19" E, 29.84 FEET; 115) S 35° 28' 06" E, 38.88 FEET; 116) S 88° 51' 19" E, 29.84 FEET; 117) S 35° 28' 06" E, 38.88 FEET; 118) S 88° 51' 19" E, 29.84 FEET; 119) S 35° 28' 06" E, 38.88 FEET; 120) S 88° 51' 19" E, 29.84 FEET; 121) S 35° 28' 06" E, 38.88 FEET; 122) S 88° 51' 19" E, 29.84 FEET; 123) S 35° 28' 06" E, 38.88 FEET; 124) S 88° 51' 19" E, 29.84 FEET; 125) S 35° 28' 06" E, 38.88 FEET; 126) S 88° 51' 19" E, 29.84 FEET; 127) S 35° 28' 06" E, 38.88 FEET; 128) S 88° 51' 19" E, 29.84 FEET; 129) S 35° 28' 06" E, 38.88 FEET; 130) S 88° 51' 19" E, 29.84 FEET; 131) S 35° 28' 06" E, 38.88 FEET; 132) S 88° 51' 19" E, 29.84 FEET; 133) S 35° 28' 06" E, 38.88 FEET; 134) S 88° 51' 19" E, 29.84 FEET; 135) S 35° 28' 06" E, 38.8

NOTES:

PROPERTY LIES WITHIN FLOOD ZONE "AE & X", BASE FLOOD ELEVATION 7', AS PER FLOOD INSURANCE RATE MAP PANEL NO. 12081C0169E, DATED 03-17-14, (SUBJECT TO VERIFICATION).

ALL UTILITIES SHOWN HEREON ARE ABOVE GROUND (VISIBLE) UTILITIES ONLY,
NO UNDERGROUND UTILITIES, IF ANY WERE LOCATED.

ELEVATIONS SHOWN HEREON ARE BASED ON NORTH AMERICAN VERTICAL DATUM OF 1988 (NAVD88) AND WERE DERIVED FROM "TAMARAC 2012" MANATEE COUNTY BENCHMARK HAVING AN ELEVATION OF 17.44'.

-- -- LEGEND -- --

(W)=Measured
 ●=Wilson Rod Found(RF)
 ●=Wilson Rod Set(IRS)#667
 ●=Wilson Pipe Found (FP)
 P=Point of Reversal
 R= Radial (P)=Tangential
 PC=Point of Compound Curve
 C=Concrete Monument Found
 CM=Concrete Monument Set #667
 C=Concrete Monument Found

(D)=Dead
 TB=Temporary Bench Mark
 P=Point of Beginning
 P=Point of Right of Way
 PC=Point of Commencement
 PC=Point of Curve
 P=Point of Tangent
 N&D=Null and Disc
 P=Proposed Elevation
 P=Plating Elevation

INV=Invert
 C=Corrot Tree
 P=Pin Tree
 O=Oak Tree
 N&D=Null and Disc
 P=Proposed Elevation
 P=Plating Elevation

□=Mitered End Section

CERTIFICATION OF SURVEYOR

JAMES L. CLEMENTS, P.S.M. # 4091
Licensed Business No. 6667

DATE OF CERTIFICATION 1-30-17

LID WITHOUT THE SIGNATURE AND THE ORIGINAL RAISED
OF A FLORIDA LICENSED SURVEYOR AND MAPPER**

BOUNDARY & TOPOGRAPHIC
SURVEY

CLEMENTS SURVEYING, INC.
509 8TH AVENUE WEST
SUITE 140
PALMETTO, FLORIDA 34221
(941) 729-6690 FAX (941) 729-7580

SCALE : 1" = 60' JOB NO. 16-402

Boundary 12-29-16 FB 236 PG 18 Other _____ FB _____ PG _____

Foundation _____ FB _____ PG _____ Other _____ FB _____ PG _____

Final _____ FB _____ PG _____ Revision _____

Update _____ FR _____ PG _____ Drawn By JC/AG