

# BUILDING FOR LEASE

2913 W. BETHEL AVENUE, MUNCIE, IN 47304



TCN  
WORLDWIDE  
REAL ESTATE SERVICES

FOR LEASE



## PROPERTY HIGHLIGHTS

### OFFERING SUMMARY

Lease Rate:	Negotiable
Available SF:	
Lot Size:	2 Acres
Building Size:	10,000 SF

## PROPERTY DESCRIPTION

Great location in high-traffic area. Currently set up as a restaurant with a tasting bar on one side and a full bar on the other. Equipped to offer carry-out and drive-thru service. Includes 2 brick pizza ovens. All equipment, furniture, TVs, and supplies are included. Private party room and restrooms on each side. Fenced patio and garden area with fountain and seating. Billboard located on property and signage available on building. Divisible into 2 businesses. Large parking lot.

## LOCATION DESCRIPTION

Great location in the heart of Muncie, located near Ball State University and minutes from I-69. Located next to hotel.

### PETE ALVEAL

317.454.7171

palveal@premiercres.com

### JIM LOGAN

317.697.6139

jlogan@premiercres.com

**PREMIER COMMERCIAL | TCN WORLDWIDE** 9785 Crosspoint Blvd., Ste. 118 | Indianapolis, IN 46256 | 317.454.7171 | [www.premiercres.com](http://www.premiercres.com)

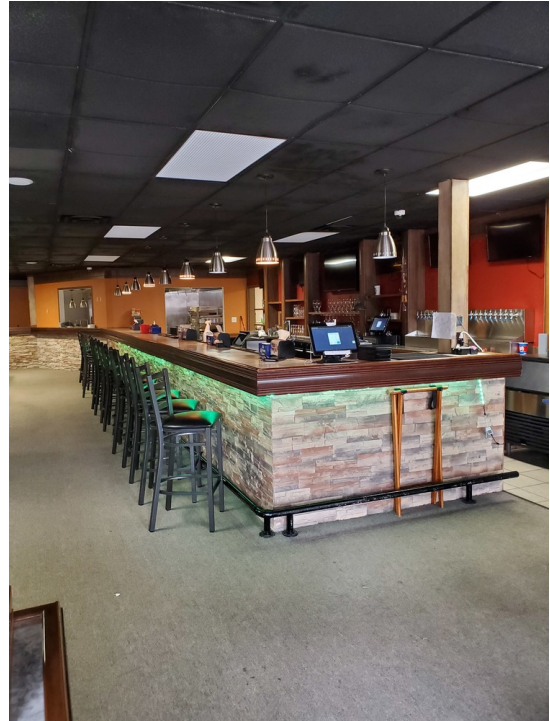
The information contained herein has been obtained from sources we deem reliable. Although we have no reason to doubt its accuracy, we do not guarantee the information is correct or complete. Marketing materials & documents alike may only be reproduced in their entirety, without modification or deletion. Photos are the property of their respective Owners, & use of these without the written consent of said Owner is prohibited. © 2023. Premier Commercial Real Estate Services, LLC

# BUILDING FOR LEASE

2913 W. BETHEL AVENUE, MUNCIE, IN 47304



**FOR LEASE**



**PETE ALVEAL**

317.454.7171

palveal@premiercres.com

**JIM LOGAN**

317.697.6139

jlogan@premiercres.com

**PREMIER COMMERCIAL | TCN WORLDWIDE** 9785 Crosspoint Blvd., Ste. 118 | Indianapolis, IN 46256 | 317.454.7171 | [www.premiercres.com](http://www.premiercres.com)

The information contained herein has been obtained from sources we deem reliable. Although we have no reason to doubt its accuracy, we do not guarantee the information is correct or complete. Marketing materials & documents alike may only be reproduced in their entirety, without modification or deletion. Photos are the property of their respective Owners, & use of these without the written consent of said Owner is prohibited. © 2023. Premier Commercial Real Estate Services, LLC



# BUILDING FOR LEASE

2913 W. BETHEL AVENUE, MUNCIE, IN 47304



**FOR LEASE**



**PETE ALVEAL**

317.454.7171

palveal@premiercres.com

**JIM LOGAN**

317.697.6139

jlogan@premiercres.com

**PREMIER COMMERCIAL | TCN WORLDWIDE** 9785 Crosspoint Blvd., Ste. 118 | Indianapolis, IN 46256 | 317.454.7171 | [www.premiercres.com](http://www.premiercres.com)

The information contained herein has been obtained from sources we deem reliable. Although we have no reason to doubt its accuracy, we do not guarantee the information is correct or complete. Marketing materials & documents alike may only be reproduced in their entirety, without modification or deletion. Photos are the property of their respective Owners, & use of these without the written consent of said Owner is prohibited. © 2023. Premier Commercial Real Estate Services, LLC



# BUILDING FOR LEASE

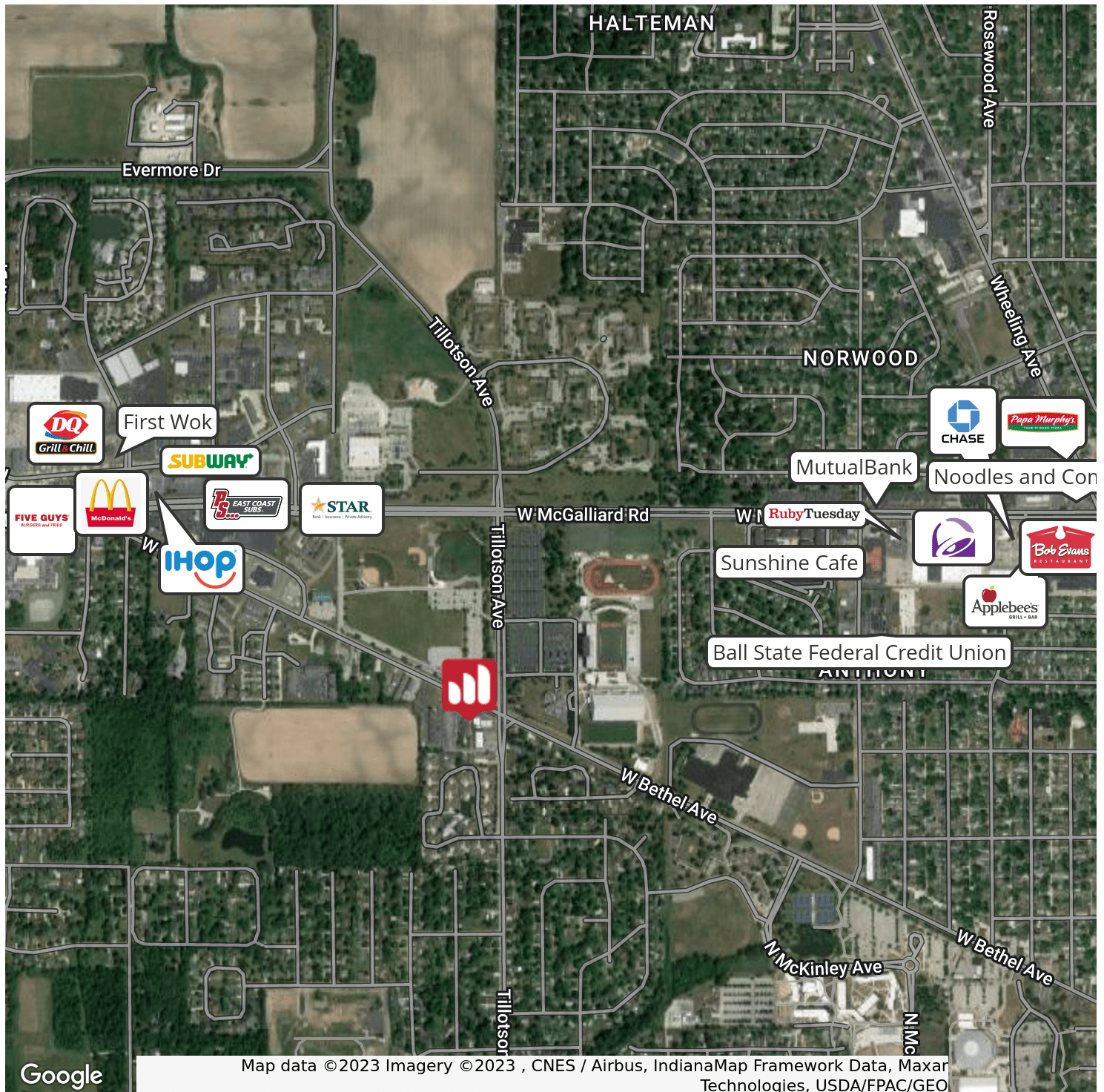
2913 W. BETHEL AVENUE, MUNCIE, IN 47304

**PREMIER  
COMMERCIAL**  
REAL ESTATE SERVICES



**TCN**  
WORLDWIDE  
REAL ESTATE SERVICES

**FOR LEASE**



**PETE ALVEAL**

317.454.7171

palveal@premiercres.com

**JIM LOGAN**

317.697.6139

jlogan@premiercres.com

**PREMIER COMMERCIAL | TCN WORLDWIDE** 9785 Crosspoint Blvd., Ste. 118 | Indianapolis, IN 46256 | 317.454.7171 | [www.premiercres.com](http://www.premiercres.com)

The information contained herein has been obtained from sources we deem reliable. Although we have no reason to doubt its accuracy, we do not guarantee the information is correct or complete. Marketing materials & documents alike may only be reproduced in their entirety, without modification or deletion. Photos are the property of their respective Owners, & use of these without the written consent of said Owner is prohibited. © 2023. Premier Commercial Real Estate Services, LLC