



## 2691 TAMIAMI TRAIL RETAIL PROPERTY

2691 TAMIAMI TRAIL, PORT CHARLOTTE, FL



### ADDRESS

**2691 Tamiami Trail**  
**Port Charlotte, FL 33952**

## PROPERTY FEATURES

- Free-standing Building
- One single 2,800 SF Open Space
- Employee Parking in Back
- 45,500 Avg Daily Traffic Count
- Part of a 3-Building Portfolio

|                           | 1 Mile   | 3 Miles  | 5 Miles  |
|---------------------------|----------|----------|----------|
| <b>Total Households:</b>  | 3,816    | 19,963   | 31,972   |
| <b>Total Population:</b>  | 7,834    | 45,244   | 73,173   |
| <b>Average HH Income:</b> | \$41,041 | \$48,226 | \$51,935 |

We obtained the information above from sources we believe to be reliable. However, we have not verified its accuracy and make no guarantee, warranty or representation about it. It or other conditions, prior sale, lease or financing, or withdrawal without notice.



PRESENTED BY:

**TAMMY SHAW**

Senior Commercial Advisor | Broker Associate  
941.769.2222  
[TammyShaw@michaelsaunders.com](mailto:TammyShaw@michaelsaunders.com)

**LEE DELIETO JR., P.A.**

Broker Associate  
941.323.0060  
[leedelietojr@michaelsaunders.com](mailto:leedelietojr@michaelsaunders.com)



## OFFERING SUMMARY

|                |                         |
|----------------|-------------------------|
| Sale Price:    | \$310,000               |
| Building Size: | 2,800 SF                |
| Available SF:  |                         |
| Lot Size:      | 7,500 SF                |
| Price / SF:    | \$110.71                |
| Year Built:    | 1979                    |
| Zoning:        | CG - Commercial General |

## PROPERTY OVERVIEW

Built in 1979, this free-standing building is currently occupied by a church. However, it was designed to be demised into two equal 1,400 SF spaces with two restrooms. Its current configuration also includes a break-room and office. Part of a 3-Building Portfolio.

## PROPERTY HIGHLIGHTS

- Free-standing Building
- One single 2,800 SF Open Space
- Employee Parking in Back
- 45,500 Avg Daily Traffic Count
- Part of a 3-Building Portfolio





Commercial

## 2691 TAMIAMI TRAIL RETAIL PROPERTY

2691 TAMIAMI TRAIL, PORT CHARLOTTE, FL



**Michael Saunders & Company**



Licensed Real Estate Broker

1605 Main Street Suite 500 | Sarasota, FL  
941.957.3730 | MSCcommercial.com

PRESENTED BY:

**Tammy Shaw**  
Senior Commercial Advisor | Broker  
Associate  
941.769.2222  
[TammyShaw@michaelsaunders.com](mailto:TammyShaw@michaelsaunders.com)

**Lee DeLieto Jr., P.A.**  
Broker Associate  
941.323.0060  
[leedelietojr@michaelsaunders.com](mailto:leedelietojr@michaelsaunders.com)

**Will Martin**  
Commercial Advisor  
941.302.9990  
[willmartin@michaelsaunders.com](mailto:willmartin@michaelsaunders.com)

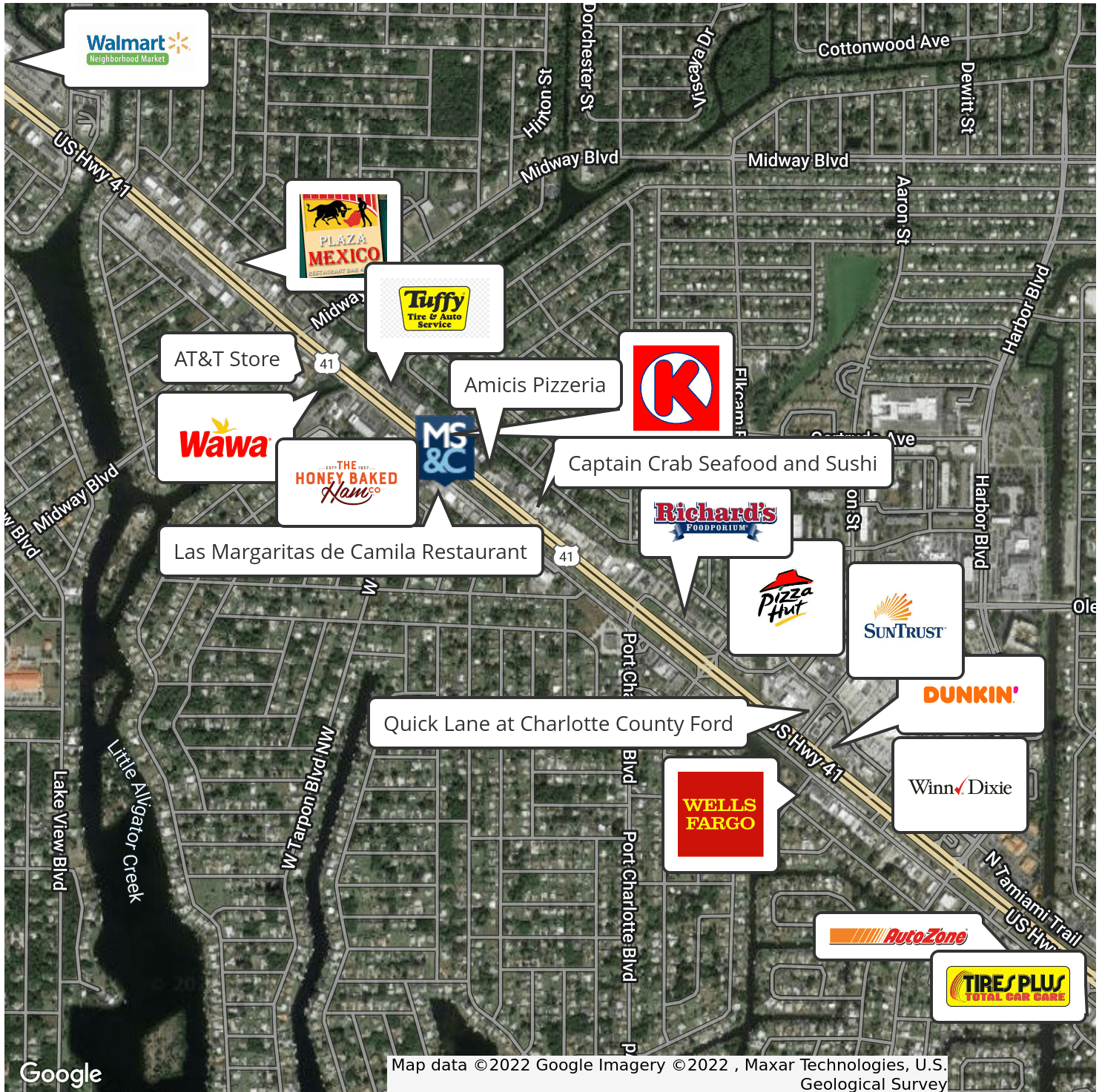




Commercial

## 2691 TAMIAMI TRAIL RETAIL PROPERTY

2691 TAMIAMI TRAIL, PORT CHARLOTTE, FL



Michael Saunders & Company



Licensed Real Estate Broker

1605 Main Street Suite 500 | Sarasota, FL  
941.957.3730 | MSCcommercial.com

PRESENTED BY:

**Tammy Shaw**  
Senior Commercial Advisor | Broker  
Associate  
941.769.2222  
TammyShaw@michaelsaunders.com

**Lee DeLieto Jr., P.A.**  
Broker Associate  
941.323.0060  
leedelietojr@michaelsaunders.com

**Will Martin**  
Commercial Advisor  
941.302.9990  
willmartin@michaelsaunders.com

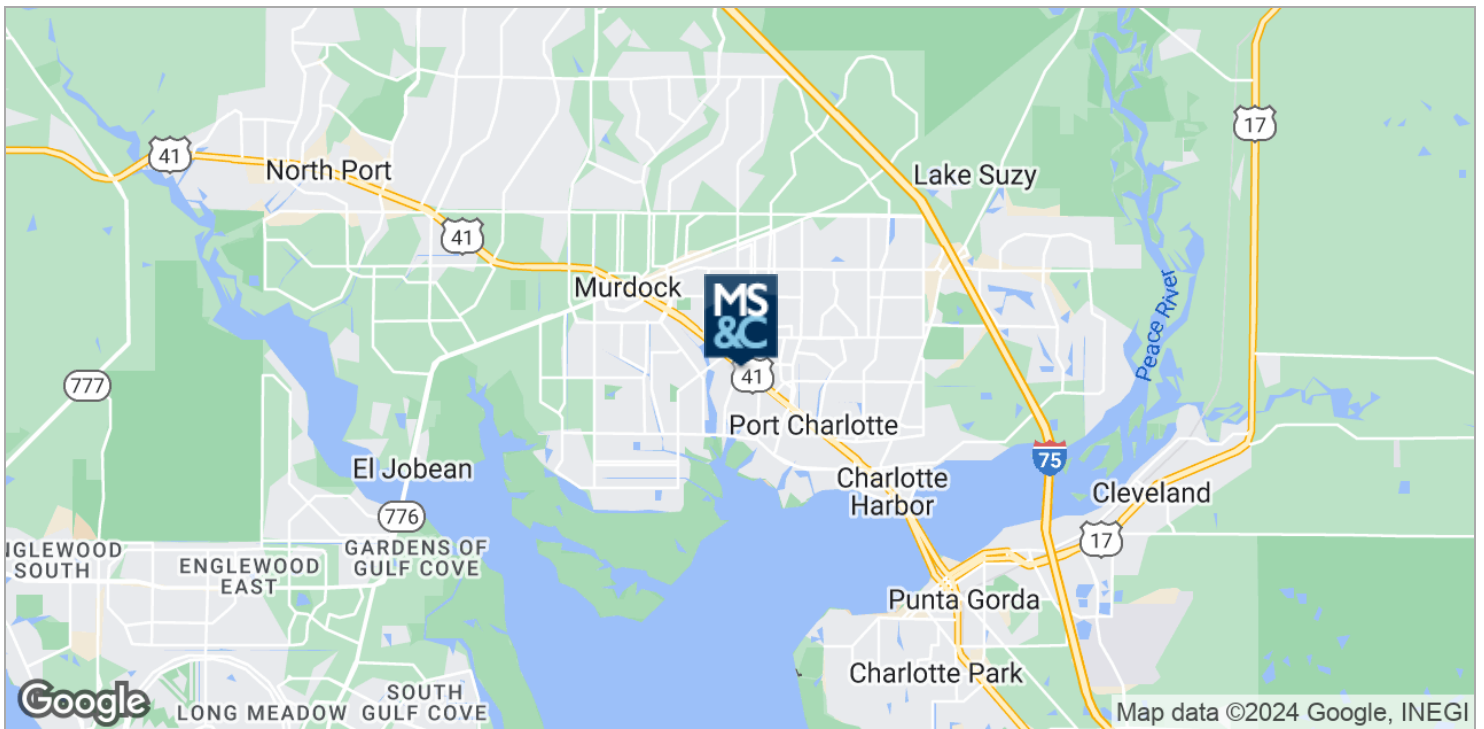
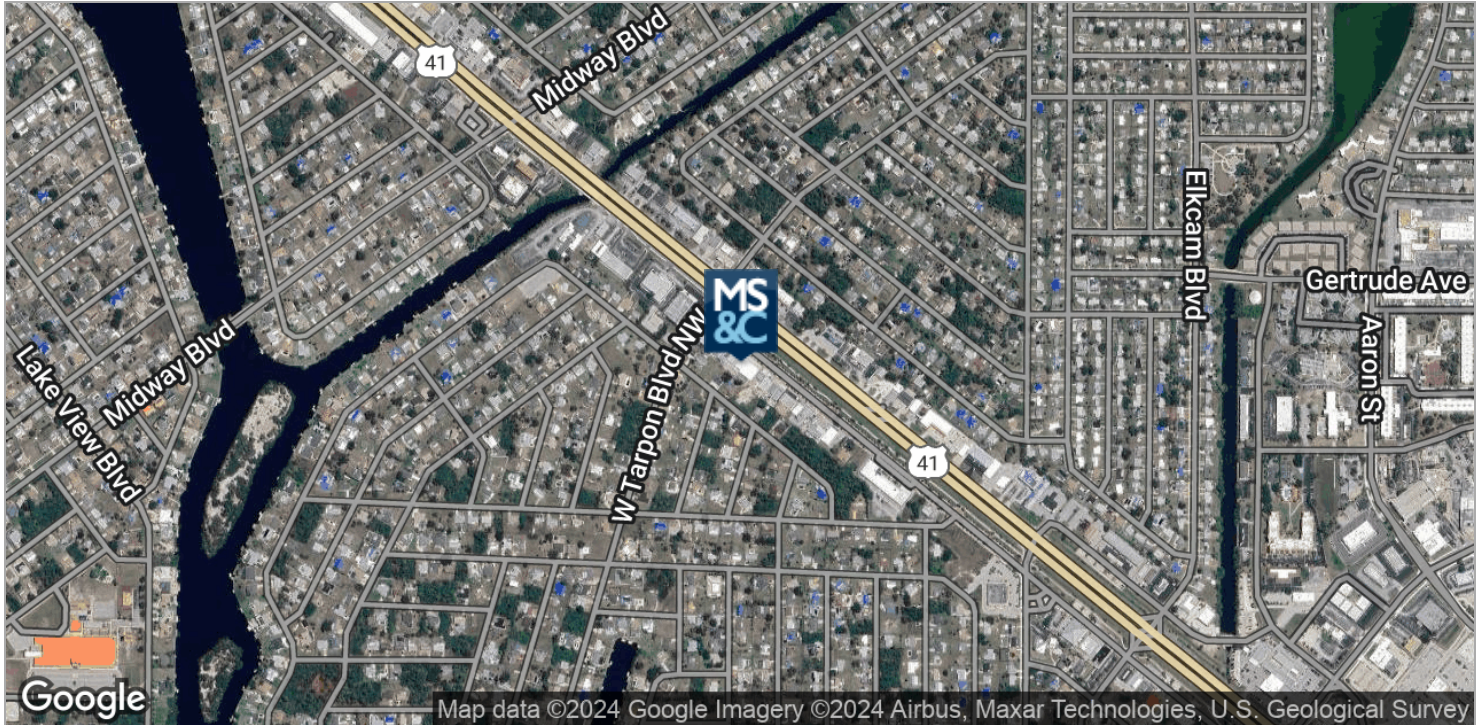




Commercial

## 2691 TAMIAMI TRAIL RETAIL PROPERTY

2691 TAMIAMI TRAIL, PORT CHARLOTTE, FL



**Michael Saunders & Company**



Licensed Real Estate Broker

1605 Main Street Suite 500 | Sarasota, FL  
941.957.3730 | MSCcommercial.com

PRESENTED BY:

**Tammy Shaw**  
Senior Commercial Advisor | Broker  
Associate  
941.769.2222  
[TammyShaw@michaelsaunders.com](mailto:TammyShaw@michaelsaunders.com)

**Lee DeLieto Jr., P.A.**  
Broker Associate  
941.323.0060  
[leedelietojr@michaelsaunders.com](mailto:leedelietojr@michaelsaunders.com)

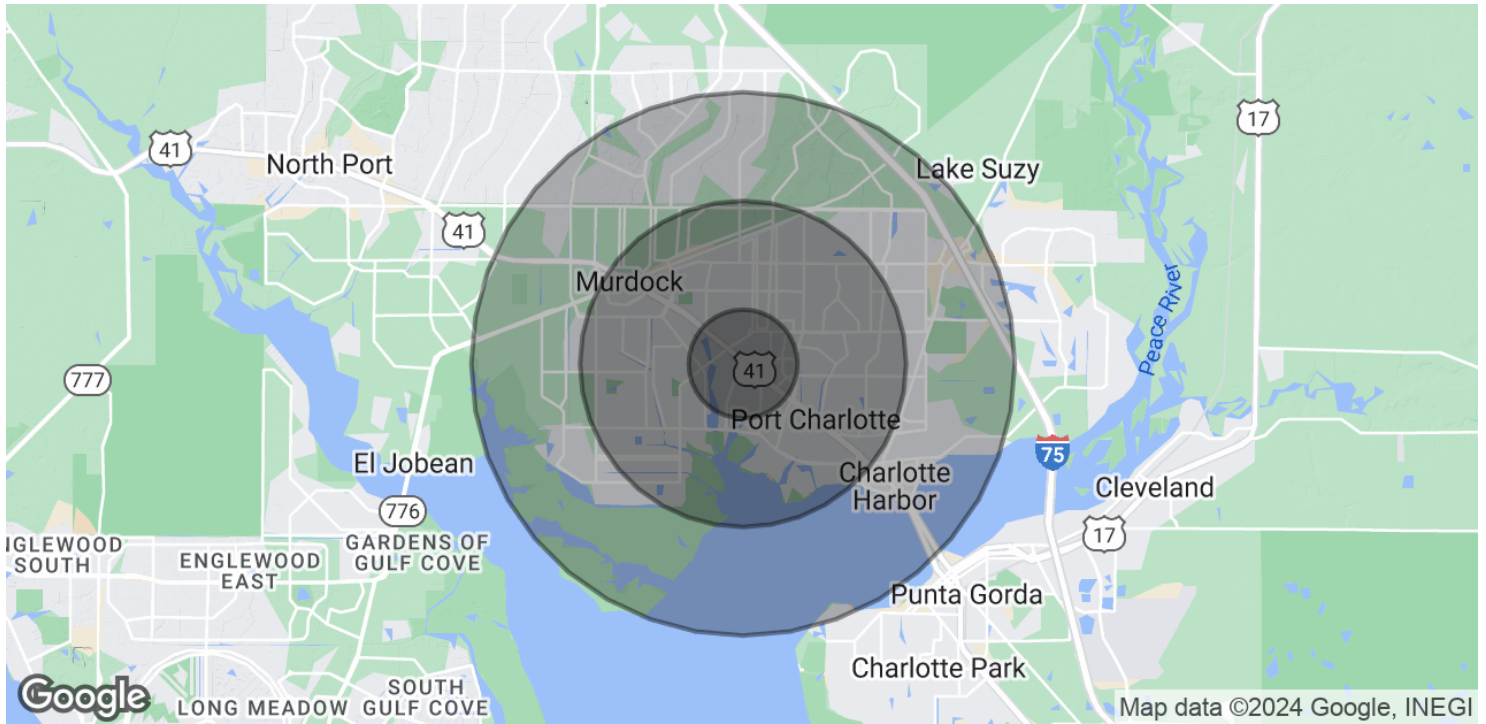
**Will Martin**  
Commercial Advisor  
941.302.9990  
[willmartin@michaelsaunders.com](mailto:willmartin@michaelsaunders.com)



Commercial

## 2691 TAMIAMI TRAIL RETAIL PROPERTY

2691 TAMIAMI TRAIL, PORT CHARLOTTE, FL



### POPULATION

|                      | 1 MILE | 3 MILES | 5 MILES |
|----------------------|--------|---------|---------|
| Total Population     | 7,834  | 45,244  | 73,173  |
| Average age          | 51.2   | 49.0    | 49.1    |
| Average age (Male)   | 47.5   | 46.9    | 47.5    |
| Average age (Female) | 52.7   | 50.8    | 50.4    |

### HOUSEHOLDS & INCOME

|                     | 1 MILE    | 3 MILES   | 5 MILES   |
|---------------------|-----------|-----------|-----------|
| Total households    | 3,816     | 19,963    | 31,972    |
| # of persons per HH | 2.1       | 2.3       | 2.3       |
| Average HH income   | \$41,041  | \$48,226  | \$51,935  |
| Average house value | \$178,354 | \$187,818 | \$198,350 |

\* Demographic data derived from 2020 ACS - US Census

Michael Saunders & Company



Licensed Real Estate Broker

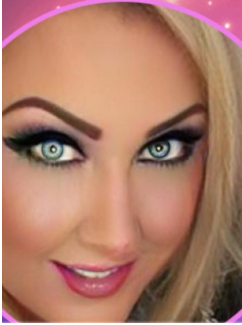
1605 Main Street Suite 500 | Sarasota, FL  
941.957.3730 | MSCcommercial.com

PRESENTED BY:

**Tammy Shaw**  
Senior Commercial Advisor | Broker  
Associate  
941.769.2222  
[TammyShaw@michaelsaunders.com](mailto:TammyShaw@michaelsaunders.com)

**Lee DeLieto Jr., P.A.**  
Broker Associate  
941.323.0060  
[leedelietojr@michaelsaunders.com](mailto:leedelietojr@michaelsaunders.com)

**Will Martin**  
Commercial Advisor  
941.302.9990  
[willmartin@michaelsaunders.com](mailto:willmartin@michaelsaunders.com)

**TAMMY SHAW**

Senior Commercial Advisor | Broker Associate

TammyShaw@michaelsaunders.com

Direct: 941.769.2222 | Cell: 941.769.2222

FL #BK3336061

**PROFESSIONAL BACKGROUND**

Tammy Shaw epitomizes integrity, energy, hard work, and creative service in every detail of your real estate transaction. Tammy grew up in Carrollton, Ohio and started cultivating her sales drive at the age of 16, selling advertising. She has continued to be a rising star and has since built a successful career in her own business for over 32 years. She has useful experience in every aspect of transactions, for the buyers, sellers, investors, and banks. She has been trained and inspired in sales by some of the best from Dale Carnegie to Tom Hopkins and many more. Five words you can count on from Tammy Shaw are love, integrity, commitment, passion, and fun from the first phone call to the close. Contact her today and get started. My mission statement is, my promise to you

- \* To provide the most accurate and up-to-date information, skilled analysis and sound real estate advice.
- \* To make the buying and selling of real estate as cost effective as possible while maintaining the highest level of service.
- \* To be known as the most professional team of Real Estate Agents whose goals are positive, team oriented, solution based, and with a clear focus on commercial investing, developing, and leasing in retail, office, industrial, multifamily, hotel and special purpose real estate.
- \* To act responsibly both in the community and civically; providing updated content and responding to community needs on an ongoing basis; while maintaining the highest standards of quality, customer convenience and satisfaction

**MSC Commercial**  
1605 Main Street Suite 500  
Sarasota, FL 34236  
941.957.3730

**PRESENTED BY:**

**Tammy Shaw**  
Senior Commercial Advisor | Broker  
Associate  
941.769.2222  
TammyShaw@michaelsaunders.com

**Lee DeLieto Jr., P.A.**  
Broker Associate  
941.323.0060  
leedelietojr@michaelsaunders.com

**Will Martin**  
Commercial Advisor  
941.302.9990  
willmartin@michaelsaunders.com





## 2691 TAMiami TRAIL RETAIL PROPERTY

2691 TAMiami TRAIL, PORT CHARLOTTE, FL



### LEE DELIETO JR., P.A.

Broker Associate

leedelietojr@michaelsaunders.com

Direct: 941.323.0060 | Cell: 941.323.0060

FL #BK702292

### PROFESSIONAL BACKGROUND

A real estate sales and commercial specialist for 17+ years, Lee DeLieto Jr. offers a uniquely informed perspective on the Sarasota market, helping clients to make the right decisions about their investment strategies. In 2005, Lee joined his father, a seasoned Michael Saunders associate, to form the Company's top producing Commercial team. To date, this exceptional duo has closed on millions of dollars of commercial property, working diligently to achieve the objectives of clients and investors.

Lee's Commercial real estate services include commercial investment property, land development, site and land acquisition, office space and retail leasing, 1031 exchanges, and asset disposition. The DeLieto Team has the proven ability to make every investment, lease, acquisition/sale a profitable experience. Committed to the community they serve, both Lee Jr. and Sr. are actively involved in local organizations both civic and charitable. Lee Jr. currently sits on the board as a community member for the Sarasota School of Arts and Sciences (SSA+S). As an active member in the business community, Lee Jr. is a recent past member of the Board of Directors for the Greater Sarasota Chamber of Commerce and Past Chair of their City Priorities Council. He is also the 2010 Past President of Commercial Investment Division (CID) under the Realtor Association of Sarasota and Manatee.

A graduate of the University of Florida, Lee has lived in Sarasota since 2005. Married to Valarie Wadsworth-DeLieto, a residential agent with Michael Saunders & Company, together they enjoy traveling across the United States on Lee's 2008 Harley Davidson.

MSC Commercial  
1605 Main Street Suite 500  
Sarasota, FL 34236  
941.957.3730



1605 Main Street Suite 500 | Sarasota, FL  
941.957.3730 | MSCcommercial.com

#### PRESENTED BY:

**Tammy Shaw**  
Senior Commercial Advisor | Broker  
Associate  
941.769.2222  
TammyShaw@michaelsaunders.com

**Lee DeLieto Jr., P.A.**  
Broker Associate  
941.323.0060  
leedelietojr@michaelsaunders.com

**Will Martin**  
Commercial Advisor  
941.302.9990  
willmartin@michaelsaunders.com





## 2691 TAMIAMI TRAIL RETAIL PROPERTY

2691 TAMIAMI TRAIL, PORT CHARLOTTE, FL



### WILL MARTIN

Commercial Advisor

[willmartin@michaelsaunders.com](mailto:willmartin@michaelsaunders.com)

Direct: 941.302.9990 | Cell: 941.302.9990

### PROFESSIONAL BACKGROUND

A Sarasota native with a wealth of area knowledge, Will Martin brings a strong finance background to his commercial real estate career. After graduating Magna Cum Laude from the esteemed Rollins College with a degree in Economics, he went on to work in mutual funds for T Rowe Price in Tampa. He returned to his Sarasota roots in 2016, and quickly realized that his education and professional experience would translate well to the world of commercial real estate.

Will believes in giving back to the community and has enjoyed involvement with Habitat for Humanity, Give Kids the World Foundation, Rollins Immersion Program, and the Special Olympics. He studied abroad in London while in college which sparked his passion for travel, and in his free time you can also find him watching the Tampa Bay Lightning, fishing or playing Ultimate Frisbee.

MSC Commercial  
1605 Main Street Suite 500  
Sarasota, FL 34236  
941.957.3730



1605 Main Street Suite 500 | Sarasota, FL  
941.957.3730 | [MSCcommercial.com](http://MSCcommercial.com)

#### PRESENTED BY:

##### Tammy Shaw

Senior Commercial Advisor | Broker  
Associate  
941.769.2222  
[TammyShaw@michaelsaunders.com](mailto:TammyShaw@michaelsaunders.com)

##### Lee DeLieto Jr., P.A.

Broker Associate  
941.323.0060  
[leedelietojr@michaelsaunders.com](mailto:leedelietojr@michaelsaunders.com)

##### Will Martin

Commercial Advisor  
941.302.9990  
[willmartin@michaelsaunders.com](mailto:willmartin@michaelsaunders.com)