

COMMERCIAL OFFICE SPACE

1717 W CANDLETREE - PEORIA



FOR LEASE:

1,200 SF OFFICE
\$999 PER MONTH

PROPERTY FEATURES

- One unit available for lease on Candletree Drive.
- Suite A - 1,200 SF offers a large open area, two private offices and a restroom.
- Located just South of Pioneer Pkwy and one block East of University St.
- Excellent condition, priced under market, easy to show and available immediately.
- Adjacent tenants include an accounting firm, insurance/wealth management office, and an early childhood advocacy group.

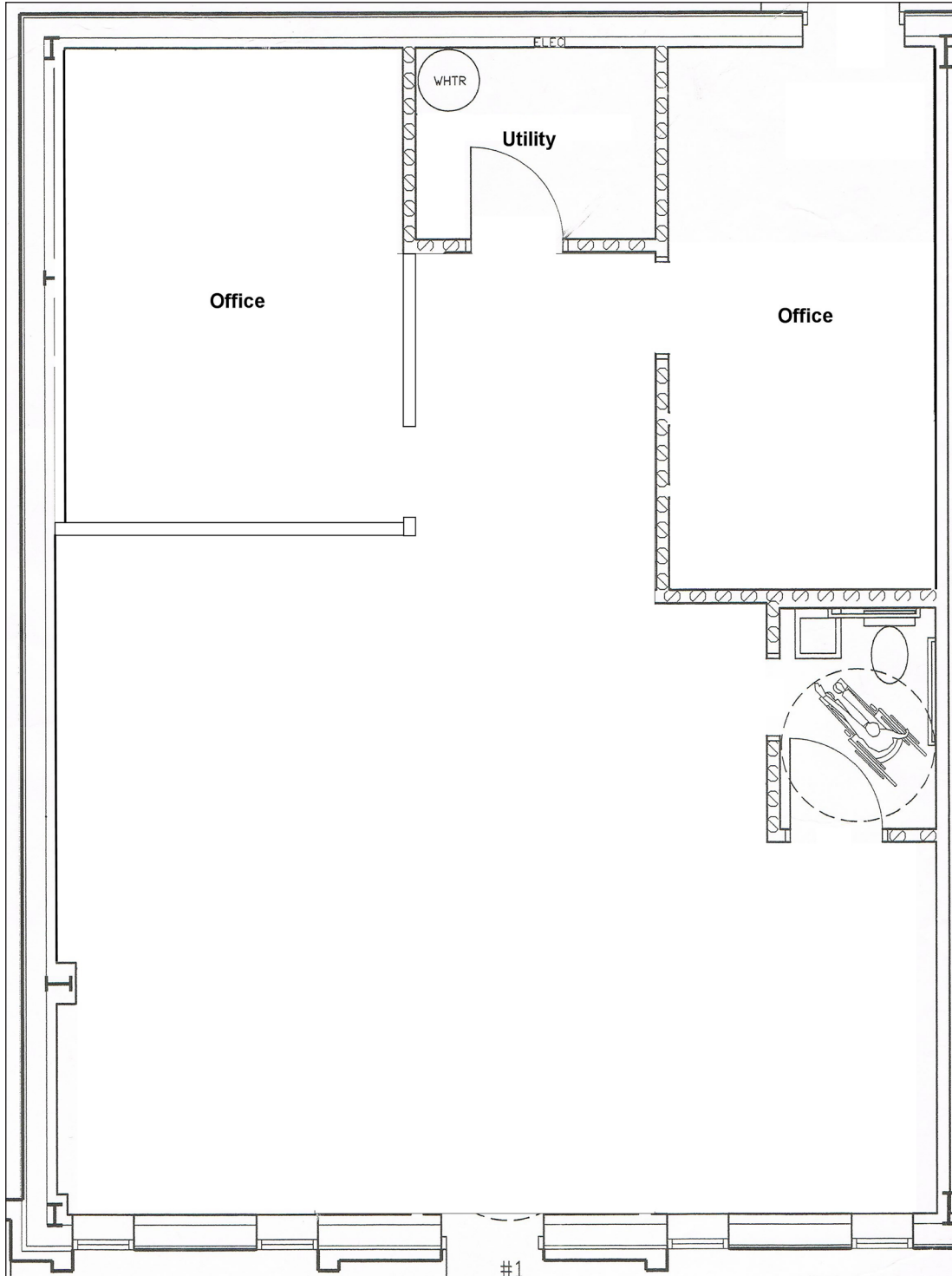


INDIVIDUAL OFFICE ROOMS

1717 W CANDLETREE - PEORIA

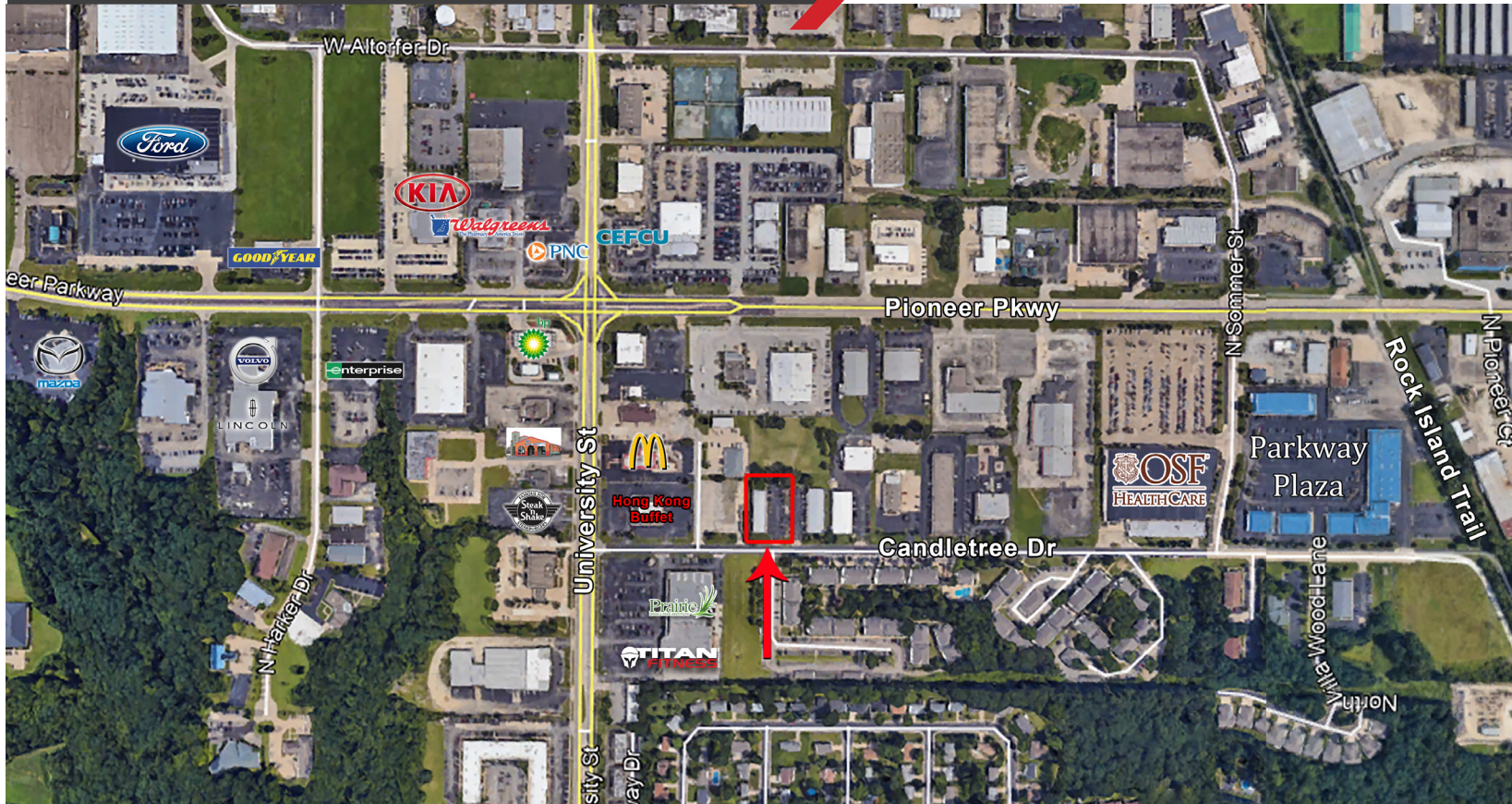


SUITE A: 1,200 SF



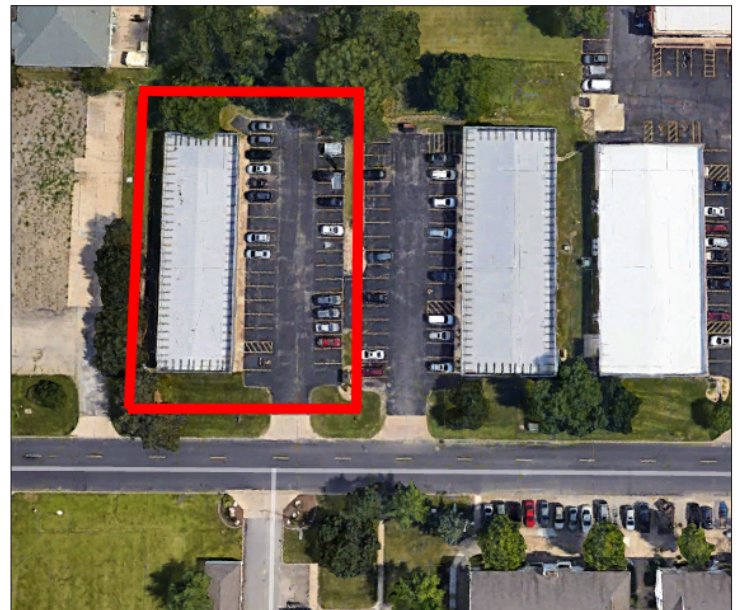
INDIVIDUAL OFFICE ROOMS

1717 W CANDLETREE - PEORIA



PROPERTY DETAILS

PROPERTY TYPE	OFFICE
BUILDING SIZE	6,000 SF
SPACES AVAILABLE	SUITE A: 1,200 SF
ZONING	C-2
YEAR BUILT	1977-1978
LEASE RATES	SUITE A: \$999 P/M (GROSS, PLUS UTILITIES)



Will Hayes

E-MAIL: Willhayes@josephcamper.com
CELL: 309-643-0717

5001 N. University St., Peoria, IL | 309-691-5919
WWW.JOSEPHCAMPER.COM