

THE 300 - BANK OF AMERICA TOWER



300 S Harbor Blvd | Anaheim

Newly Renovated Building

Creative/Office For Lease

300HARBOR.COM



Creative and General Office Suites Available

Building Summary

- A 10-story, 121,825 office building
- Standard parking available at a ratio of 4/1,000 sf (potential to expand)
- On-site management and 24/7 security
- Features high speed internet connections over fiber networks
- Numerous walkable amenities including restaurants, banking and hotels; Center Street Promenade / Anaheim Packing House, and much more!
- Easy Access to the 5, 91, and 57 Freeways; Disneyland within minutes.



Property Overview

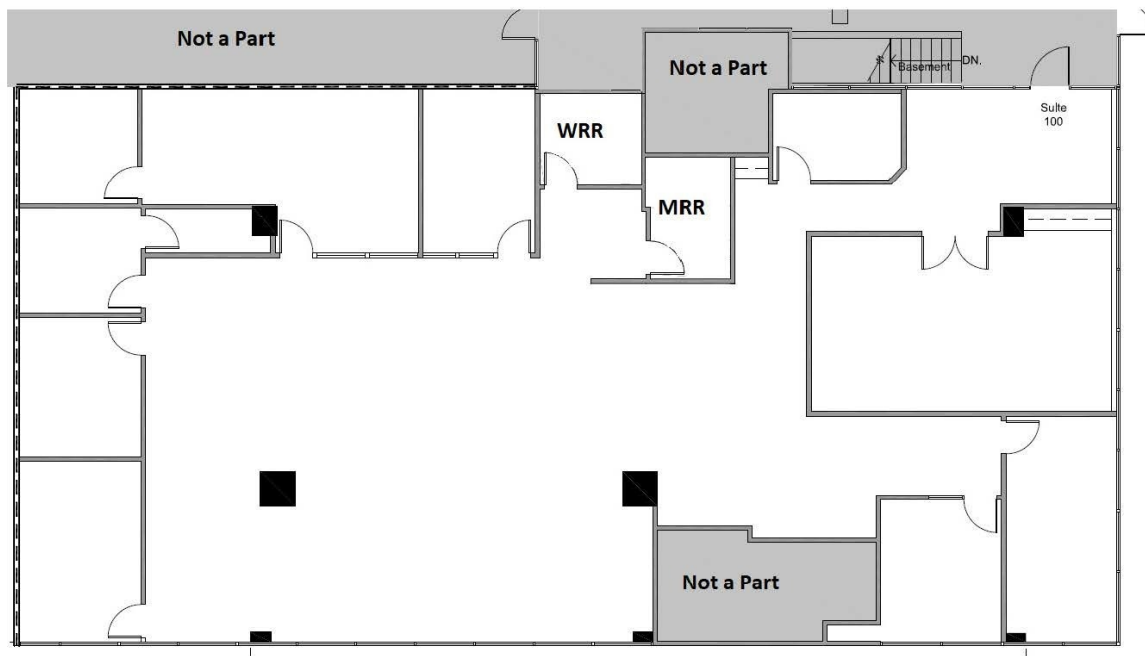
The 300 - BANK OF AMERICA TOWER of Anaheim is a 10-story 121,825 square foot corporate office building which offers excellent views of the historic downtown Anaheim area, Disneyland, and surrounding cities. With immediate access to the 5, 91, and 57 Freeways, The 300 is surrounded by numerous amenities including Disneyland, Downtown Anaheim, Anaheim Marketplace, and the Anaheim Packing District (Packing House).

The building offers a spectrum of creative office and general office suites and layouts to suit your businesses' needs. Additionally, The 300 can accommodate above standard parking requirements including medical uses.

THE 300 - BANK OF AMERICA TOWER

Floor Plan- Suite 100

+/- 5,463 SQFT



Exclusive Agents

MARSHAL VOGT

Principal
714.564.7117
mvogt@lee-associates.com
CalDRE #01519213

JONMARK FABIANO

Associate
714.564.7167
jfabiano@lee-associates.com
CalDRE #1250488

JAIMESON HEARNE

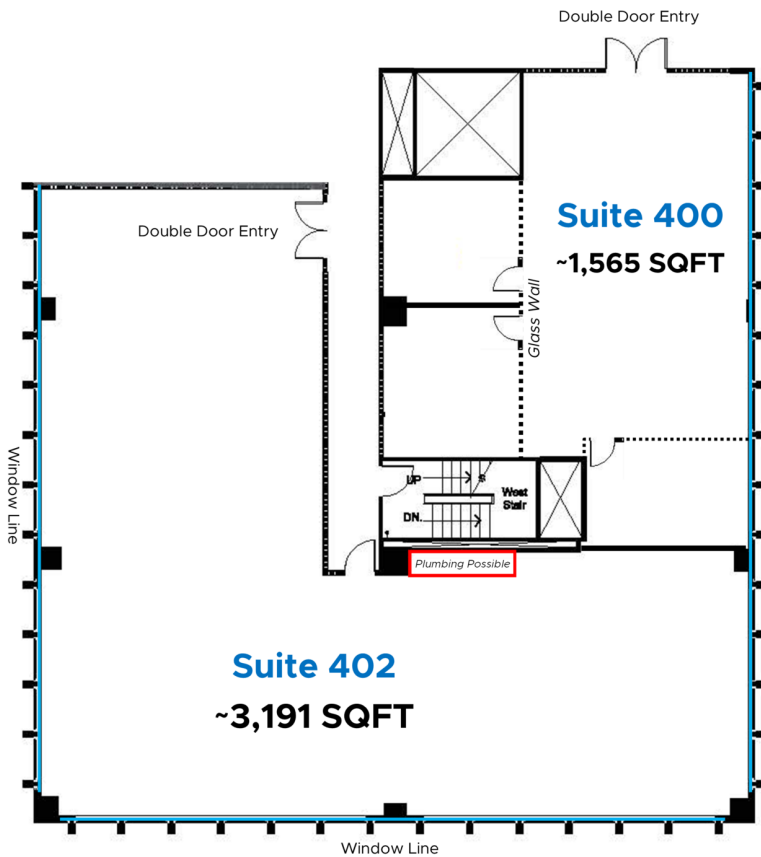
Principal
714.564.7146
jhearne@lee-associates.com
CalDRE #01925107



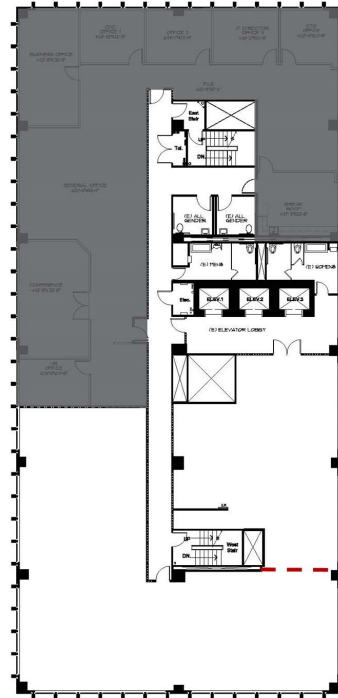
THE 300 - BANK OF AMERICA TOWER

Floor Plan- Suite 400/402

~1,565 / ~3,191 SQFT



Contiguous to ~4,756 SQFT



Exclusive Agents

MARSHAL VOGT

Principal
714.564.7117
mvogt@lee-associates.com
CalDRE #01519213

JONMARK FABIANO

Associate
714.564.7167
jfabiano@lee-associates.com
CalDRE #1250488

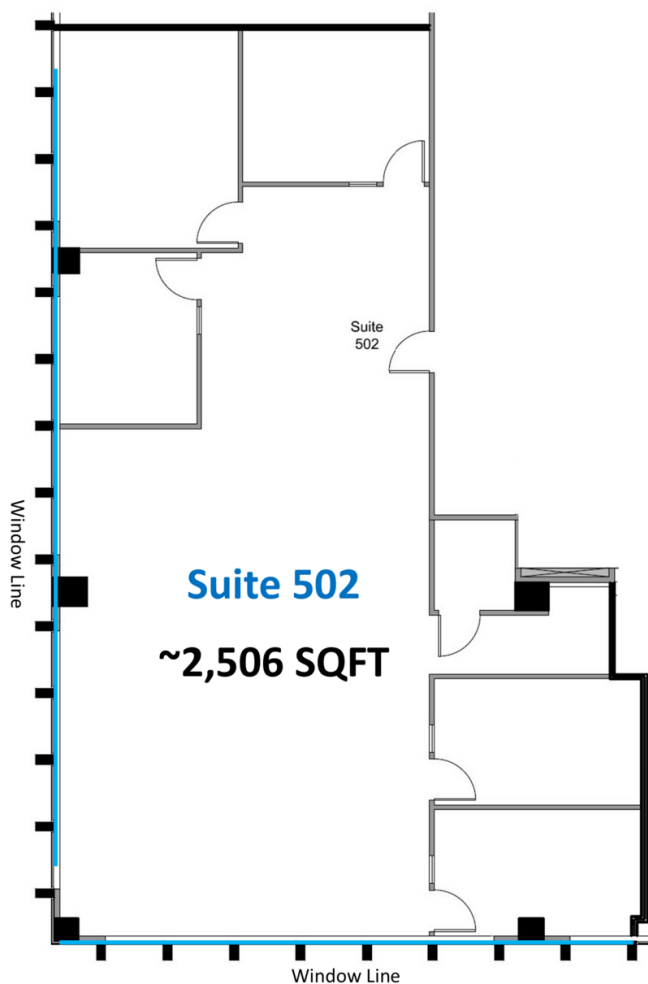
JAIMESON HEARNE

Principal
714.564.7146
jhearne@lee-associates.com
CalDRE #01925107



THE 300 - BANK OF AMERICA TOWER

Floor Plan- Suite 502 +/-2,506 SQFT



Exclusive Agents

MARSHAL VOGT

Principal
714.564.7117
mvogt@lee-associates.com
CalDRE #01519213

JONMARK FABIANO

Associate
714.564.7167
jfabiano@lee-associates.com
CalDRE #1250488

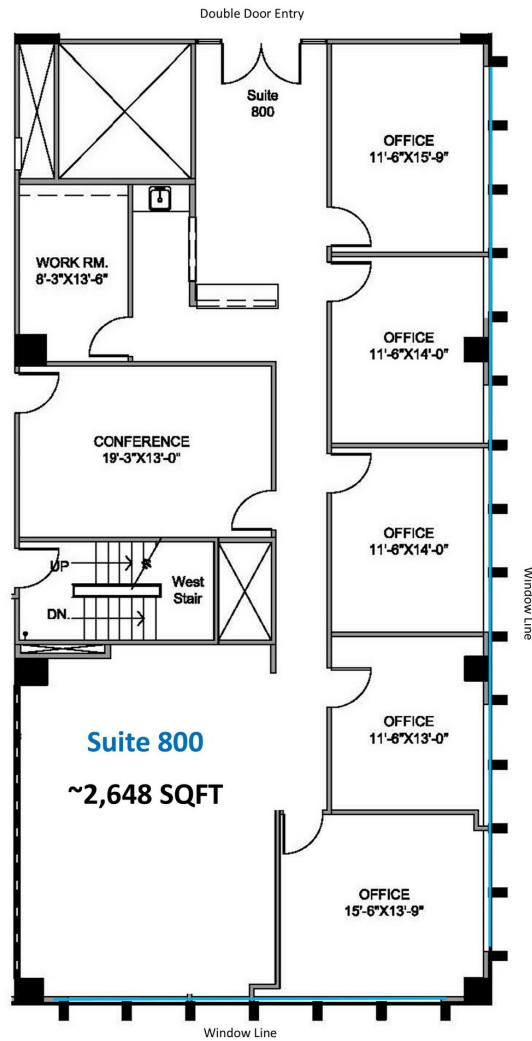
JAIMESON HEARNE

Principal
714.564.7146
jhearne@lee-associates.com
CalDRE #01925107



THE 300 - BANK OF AMERICA TOWER

Floor Plan- Suite 800 +/-2,648 SQFT



Exclusive Agents

MARSHAL VOGT

Principal
714.564.7117
mvogt@lee-associates.com
CalDRE #01519213

JONMARK FABIANO

Associate
714.564.7167
jfabiano@lee-associates.com
CalDRE #1250488

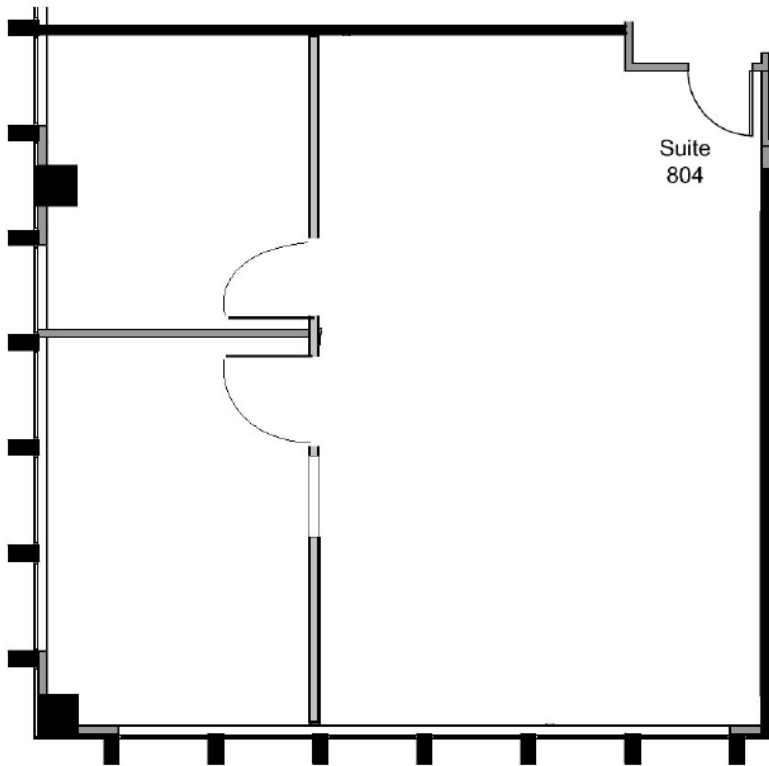
JAIMESON HEARNE

Principal
714.564.7146
jhearne@lee-associates.com
CalDRE #01925107



THE 300 - BANK OF AMERICA TOWER

Floor Plan - Suite 804
+/- 1,297 SQFT



Exclusive Agents

MARSHAL VOGT

Principal
714.564.7117
mvogt@lee-associates.com
CalDRE #01519213

JONMARK FABIANO

Associate
714.564.7167
jfabiano@lee-associates.com
CalDRE #1250488

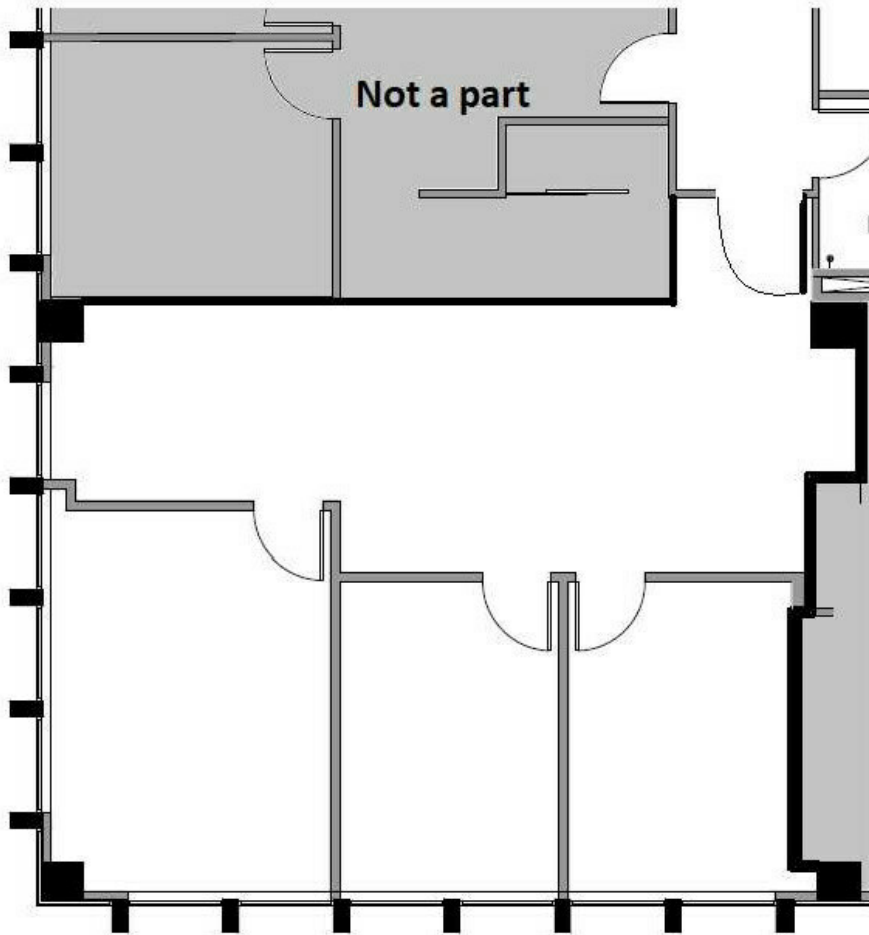
JAIMESON HEARNE

Principal
714.564.7146
jhearne@lee-associates.com
CalDRE #01925107



THE 300 - BANK OF AMERICA **TOWER**

Floor Plan - Suite 904
+/- 1,061 SQFT



Exclusive Agents

MARSHAL VOGT

Principal
714.564.7117
mvogt@lee-associates.com
CalDRE #01519213

JONMARK FABIANO

Associate
714.564.7167
jfabiano@lee-associates.com
CalDRE #1250488

JAIMESON HEARNE

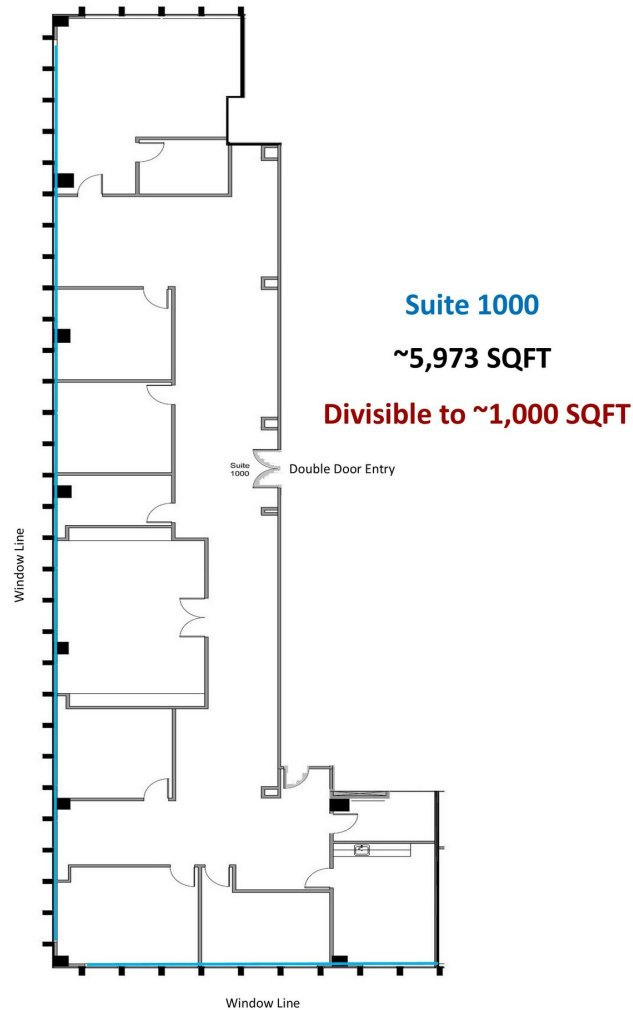
Principal
714.564.7146
jhearne@lee-associates.com
CalDRE #01925107



THE 300 - BANK OF AMERICA TOWER

Floor Plan- Suite 1000

+/-1,000 - 5,973 SQFT



Exclusive Agents

MARSHAL VOGT

Principal
714.564.7117
mvogt@lee-associates.com
CalDRE #01519213

JONMARK FABIANO

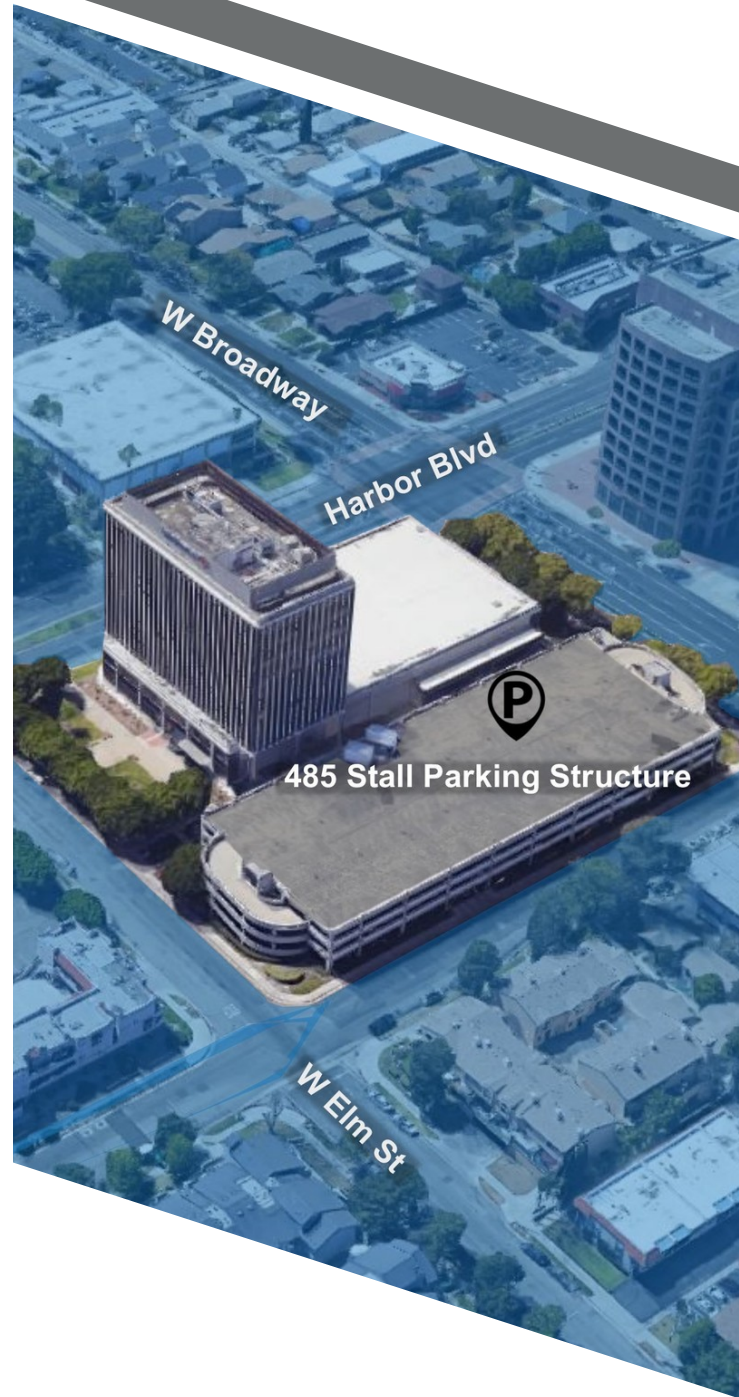
Associate
714.564.7167
jfabiano@lee-associates.com
CalDRE #1250488

JAIMESON HEARNE

Principal
714.564.7146
jhearne@lee-associates.com
CalDRE #01925107



THE 300 - BANK OF AMERICA TOWER



Exclusive Agents

MARSHAL VOGT

Principal
714.564.7117
mvogt@lee-associates.com
CalDRE #01519213

JONMARK FABIANO

Associate
714.564.7167
jfabiano@lee-associates.com
CalDRE #1250488

JAIMESON HEARNE

Principal
714.564.7146
jhearne@lee-associates.com
CalDRE #01925107

