

Free-standing Bank Branch Sublease

850 Avenue D Marrero, LA 70072

PROPERTY SUMMARY



Property Highlights

- Former bank branch available for immediate occupancy.
- Includes a drive-thru ATM lane.

Offering Summary

Sublease Rate:	\$15.00 SF/yr (NNN)
Sublease Expiration:	December 31, 2024
Available SF:	1,500 SF
Lot Size:	15,976 SF
Building Size:	1,500 SF
Zoning:	C2

Matthew Pittman, CCIM
504.322.1275
mpittman@beaibox.com

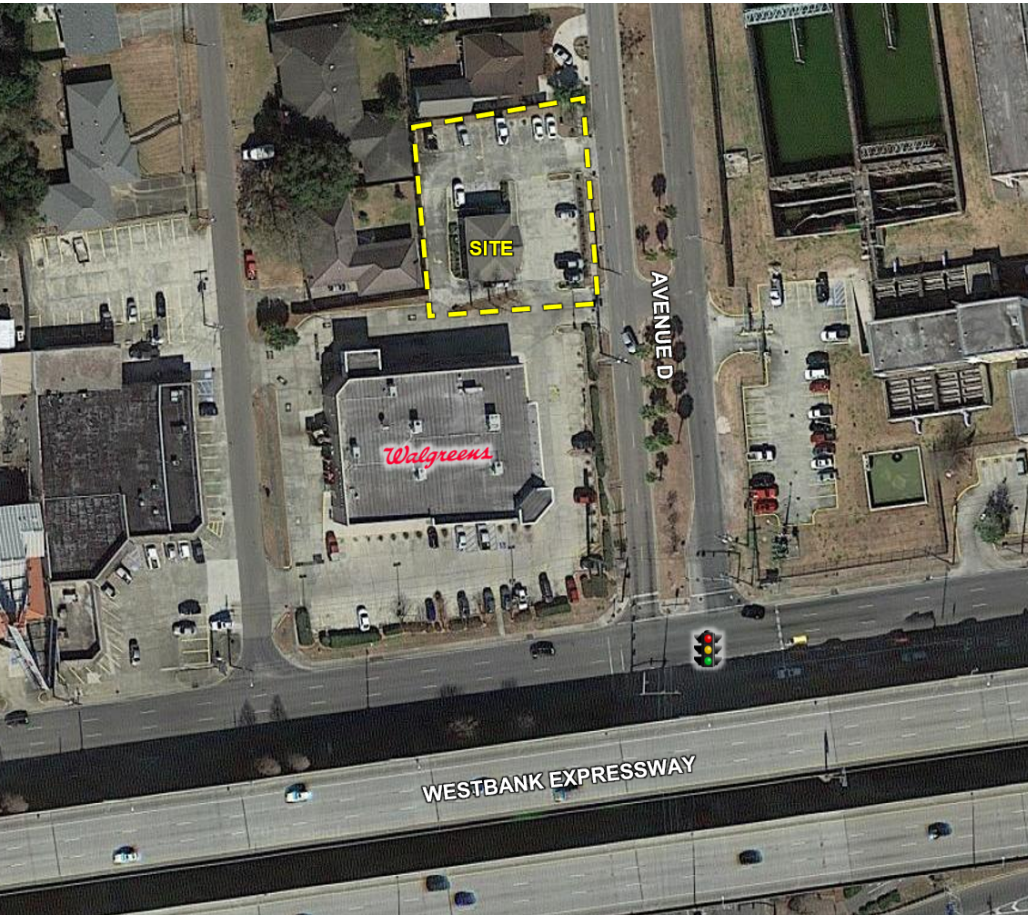
Broker of Record, Beau J. Box; Licensed by the Louisiana Real Estate Commission, Mississippi Real Estate Commission, Alabama Real Estate Commission and Florida Real Estate Commission, USA. This information has been secured from sources we believe to be reliable, but we make no representations or warranties, expressed or implied, as to the accuracy of the information. References to square footage or age are approximate. Buyer must verify the information and bears all risk for any inaccuracies. © Beau Box Commercial Real Estate. | January 28, 2022



Free-standing Bank Branch Sublease

850 Avenue D Marrero, LA 70072

ADDITIONAL PHOTOS



Matthew Pittman, CCIM
504.322.1275
mpittman@beaubox.com

Broker of Record, Beau J. Box; Licensed by the Louisiana Real Estate Commission, Mississippi Real Estate Commission, Alabama Real Estate Commission and Florida Real Estate Commission, USA. This information has been secured from sources we believe to be reliable, but we make no representations or warranties, expressed or implied, as to the accuracy of the information. References to square footage or age are approximate. Buyer must verify the information and bears all risk for any inaccuracies. © Beau Box Commercial Real Estate. | January 28, 2022



Free-standing Bank Branch Sublease

850 Avenue D Marrero, LA 70072

ADDITIONAL PHOTOS



Matthew Pittman, CCIM
504.322.1275
mpittman@beaibox.com

Broker of Record, Beau J. Box; Licensed by the Louisiana Real Estate Commission, Mississippi Real Estate Commission, Alabama Real Estate Commission and Florida Real Estate Commission, USA. This information has been secured from sources we believe to be reliable, but we make no representations or warranties, expressed or implied, as to the accuracy of the information. References to square footage or age are approximate. Buyer must verify the information and bears all risk for any inaccuracies. © Beau Box Commercial Real Estate. | January 28, 2022



Free-standing Bank Branch Sublease

850 Avenue D Marrero, LA 70072

ADDITIONAL PHOTOS



Matthew Pittman, CCIM
504.322.1275
mpittman@beaubox.com

Broker of Record, Beau J. Box; Licensed by the Louisiana Real Estate Commission, Mississippi Real Estate Commission, Alabama Real Estate Commission and Florida Real Estate Commission, USA. This information has been secured from sources we believe to be reliable, but we make no representations or warranties, expressed or implied, as to the accuracy of the information. References to square footage or age are approximate. Buyer must verify the information and bears all risk for any inaccuracies. © Beau Box Commercial Real Estate. | January 28, 2022

