

PROPERTY SUMMARY

199 COON RAPIDS BLVD, COON RAPIDS, MN 55433



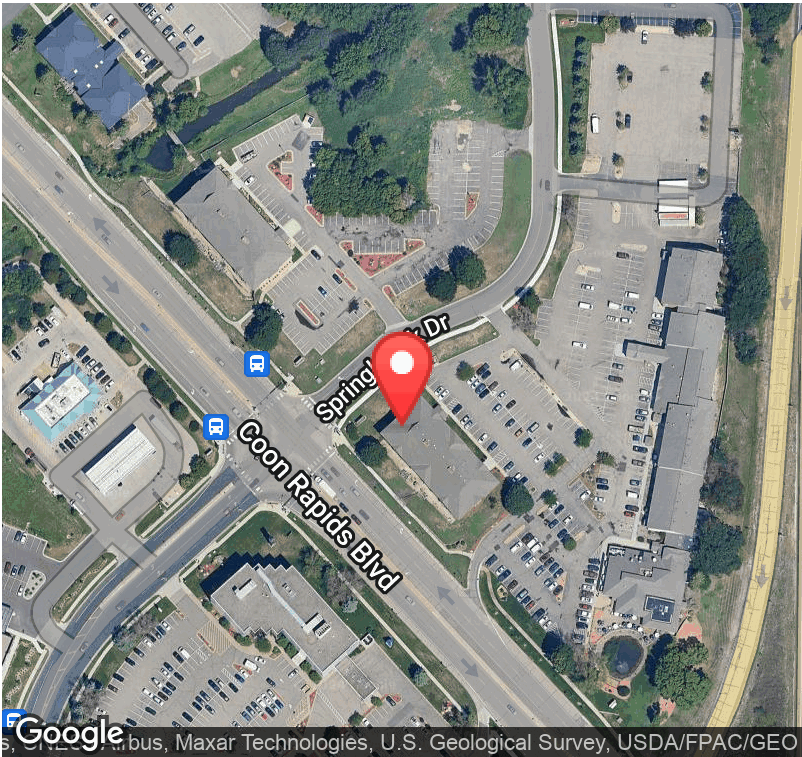
PROPERTY HIGHLIGHTS

- Conveniently Located at Coon Rapids Blvd and Hwy's 10/610
- Close proximity to local restaurants and Kwik Trip
- First Class Customer Service w/ Rapid Response

OFFERING SUMMARY

Lease Rate:	Negotiable
2024 CAM/Taxes:	\$9.72 PSF
Available SF:	455 - 3,332 SF
Building Size:	29,822 SF

DEMOGRAPHICS	1 MILE	3 MILES	5 MILES
Total Households	2,646	30,321	80,179
Total Population	6,698	77,307	211,261
Average HH Income	\$63,638	\$69,479	\$72,567



SUITE 110 - 1,431 SF

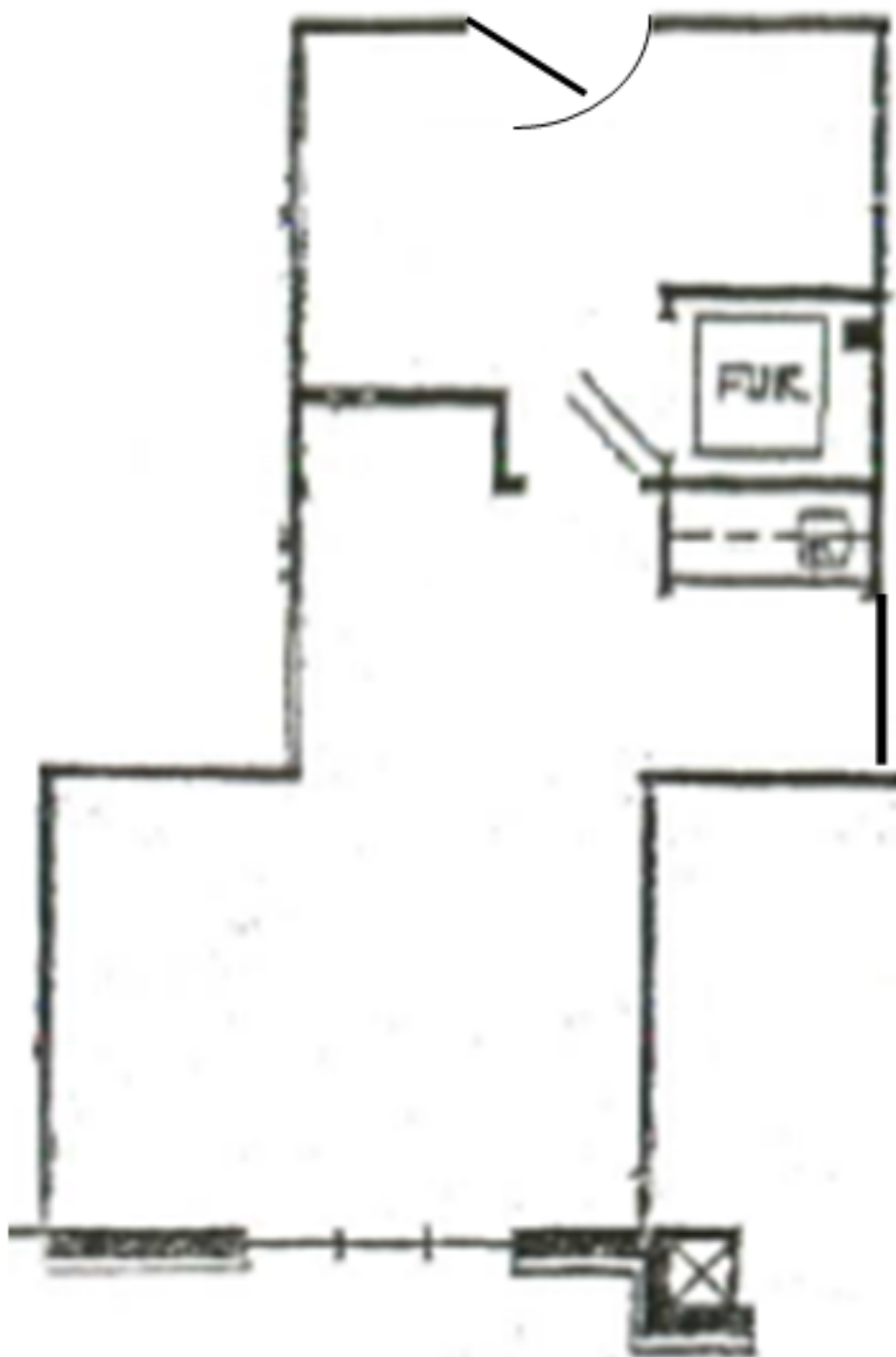
199 COON RAPIDS BLVD, COON RAPIDS, MN 55433



Suite 110 - 1,431 RSF

SUITE 207 - 455 SF

199 COON RAPIDS BLVD, COON RAPIDS, MN 55433

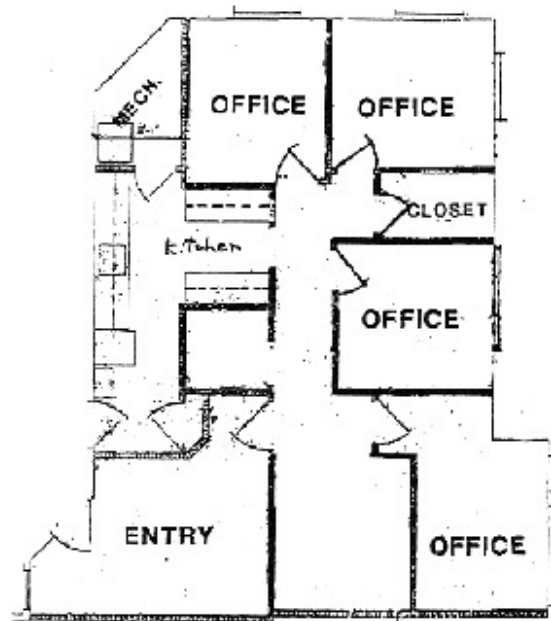


SUITE 211 - 1,094 SF

199 COON RAPIDS BLVD, COON RAPIDS, MN 55433

199 Building- Suite 211

1,094 SF



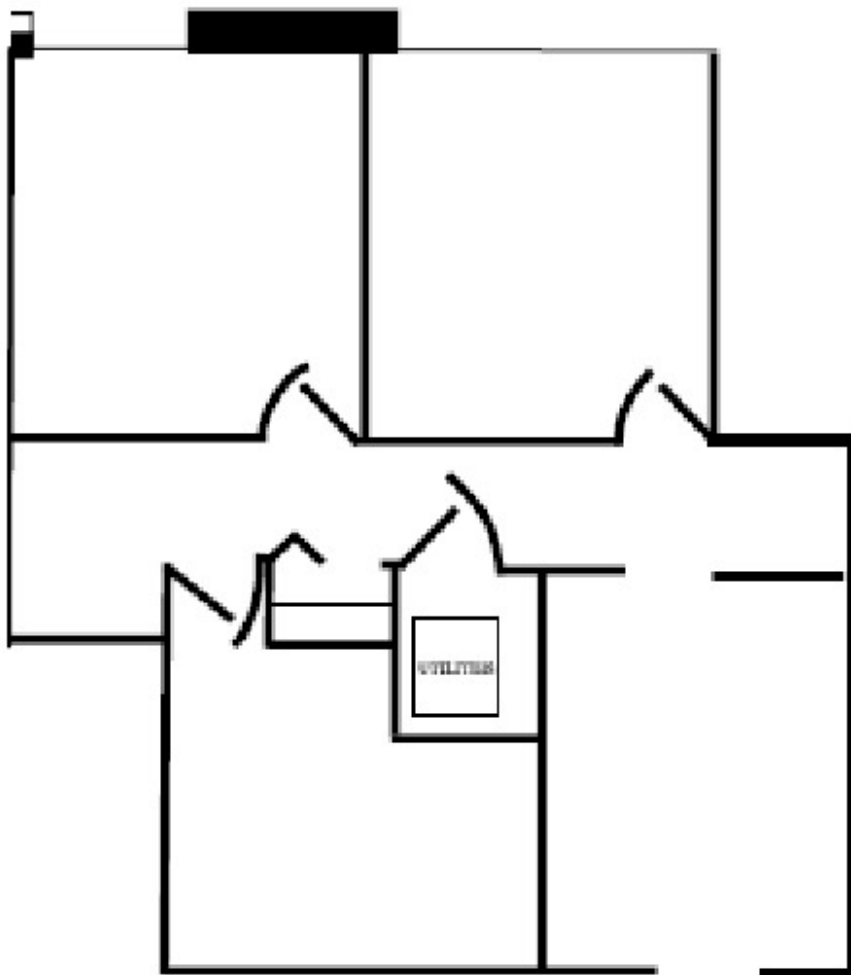
see list

Suite 211 - 1,094 RSF

SUITE 212 - 893 SF

199 COON RAPIDS BLVD, COON RAPIDS, MN 55433

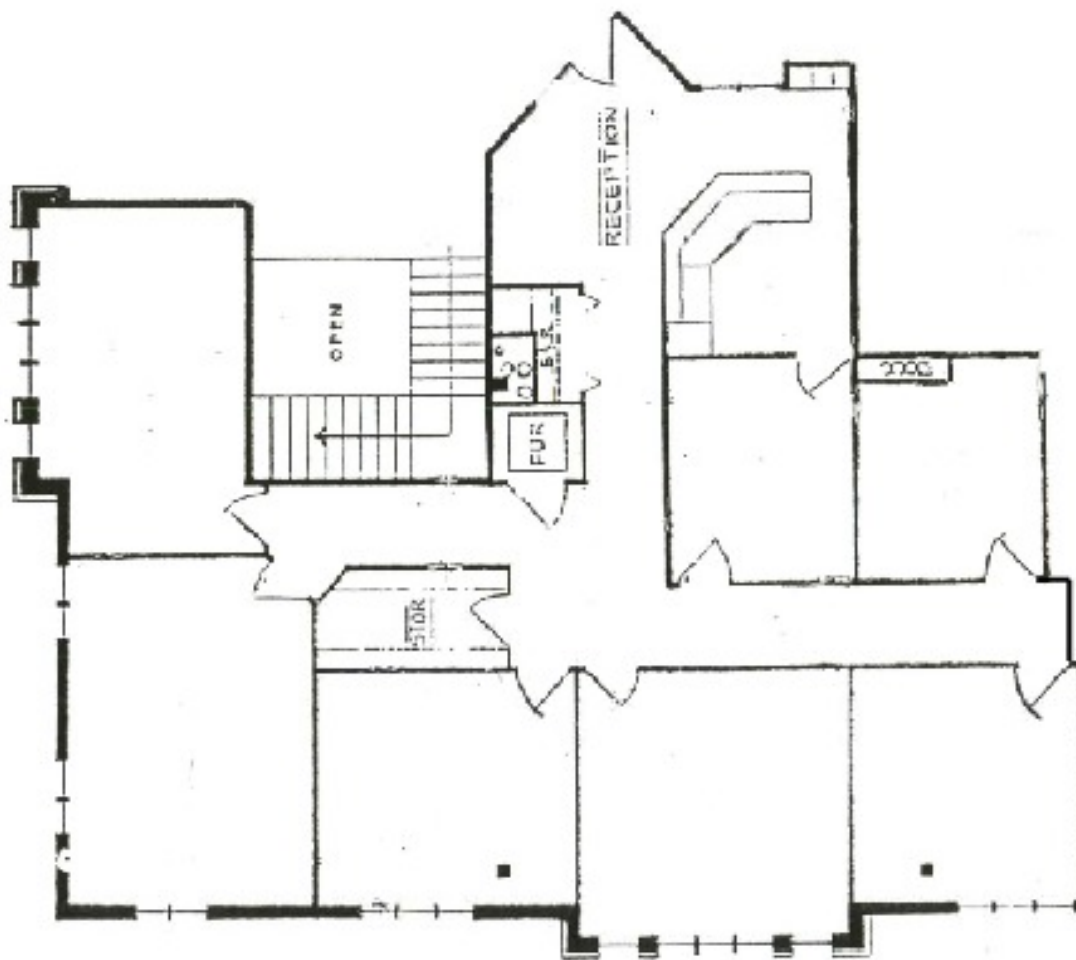
199 BUILDING
SUITE 212
893 SQ FT



SUITE 308 - 2,187 SF

199 COON RAPIDS BLVD, COON RAPIDS, MN 55433

199 Building Suite 308
2,187 RSF



Suite 308 - 2,187 RSF

SUITE 310 - 1,165 SF

199 COON RAPIDS BLVD, COON RAPIDS, MN 55433

SUITE 310
1,165 SF

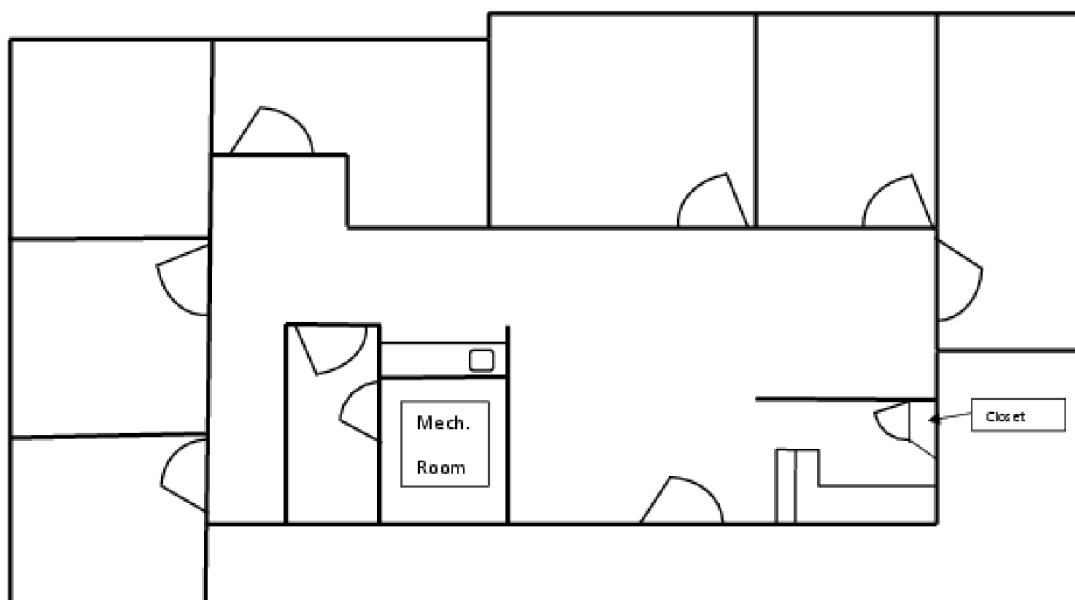


SUITE 314- 2,157 SF

199 COON RAPIDS BLVD, COON RAPIDS, MN 55433

199 Suite 314

SQFT 2,157

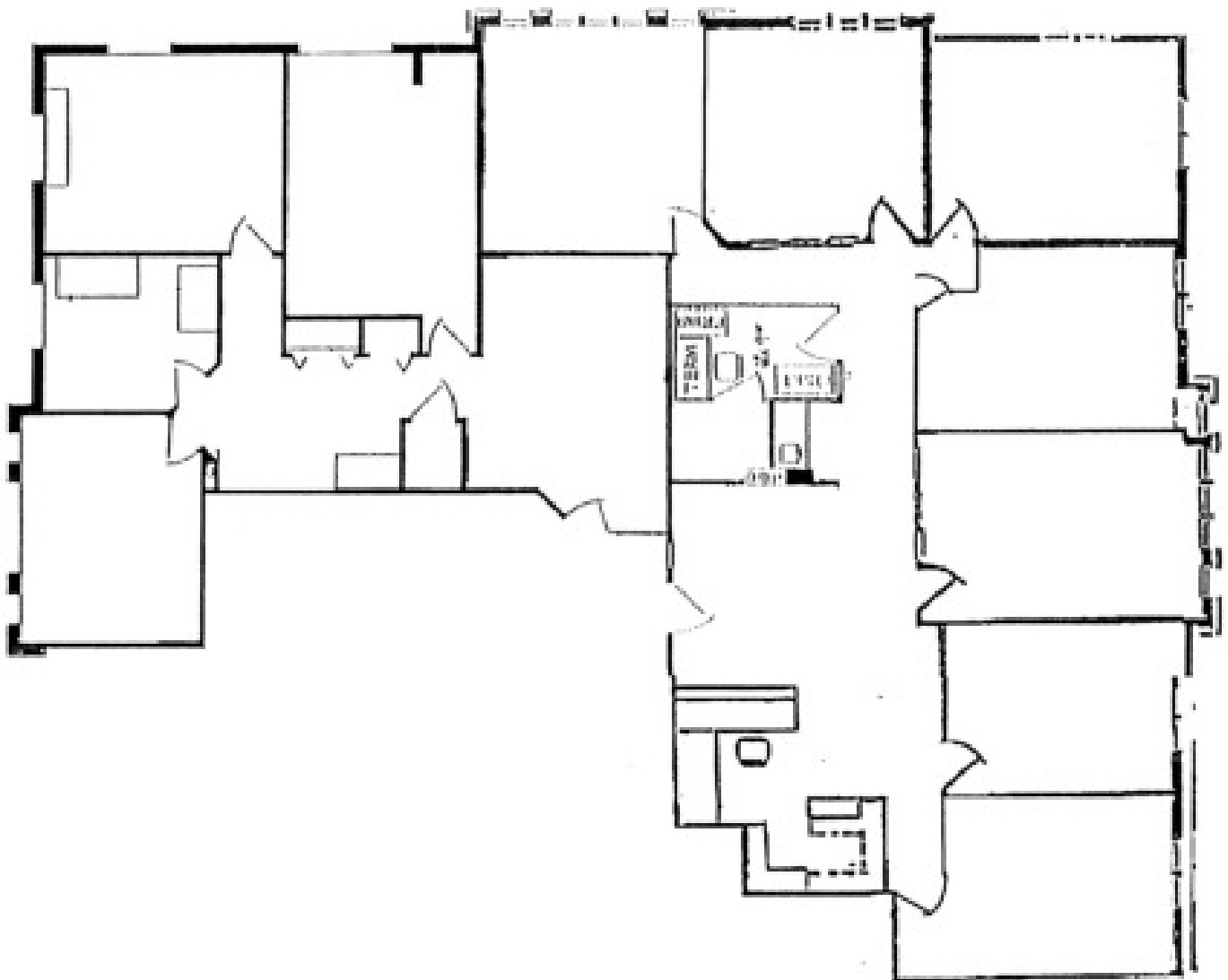


Suite 310/314 - 3,332 RSF

SUITE 310 & 314 - 3,322 SF

199 COON RAPIDS BLVD, COON RAPIDS, MN 55433

SUITE 310 & 314
3,322 SF

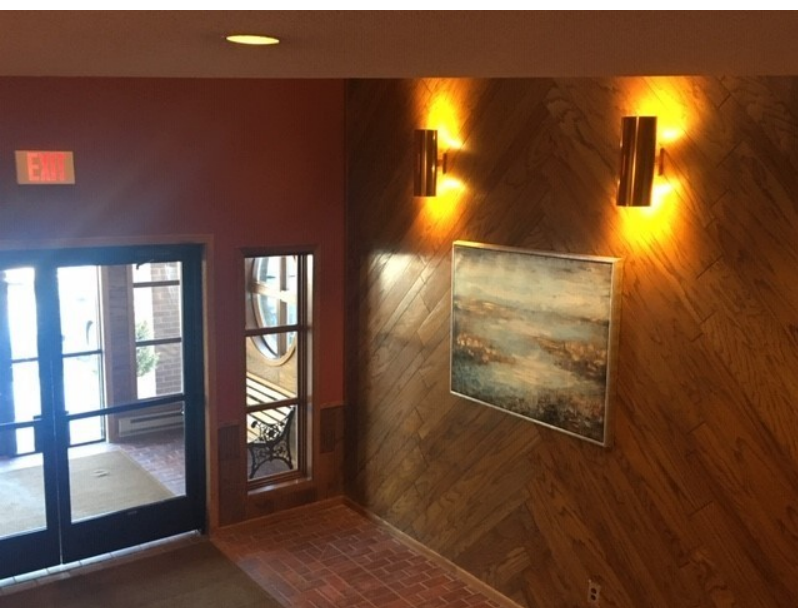
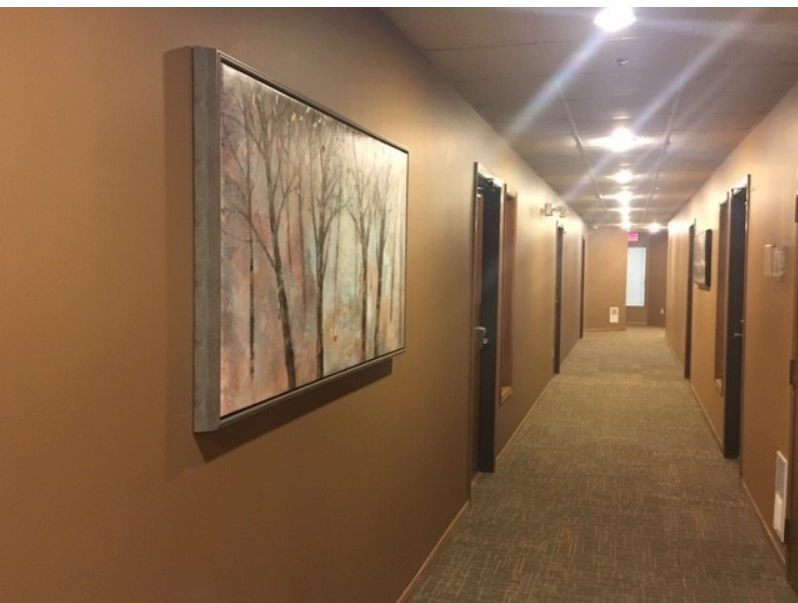


Affordable Office Suites Available

199 Building

ADDITIONAL INFORMATION

199 COON RAPIDS BLVD, COON RAPIDS, MN 55433



RETAILER MAP

199 COON RAPIDS BLVD, COON RAPIDS, MN 55433

