

31700 MIDDLEBELT FARMINGTON HILLS, MI



FOR LEASE



Join an intimate community of professionals in Farmington Hills, MI

Property Highlights

- 1,930-7,405 SF Available For Lease
- Recent Building Renovations Including Bathrooms, Lobby and All Common Areas
- High Profile 2-Story Corporate Headquarters Building Designed by Minoru Yamisaki
- Soaring Atrium with Modern Lounge Furniture
- Beautifully Maintained Inside and Out - Winner of Numerous Beautification Awards from the City of Farmington Hills
- New Ownership and Professional On-Site Management
- Just Seconds from Banking, Restaurants and Neighborhood Retail
- Easy Access to I-696, M-10 and M-39 Freeways
- Covered Underground Parking Available. Overall Ratio of 4.08/1,000
- On-Site Storage
- Aggressive Lease Rates



Commercial Real Estate Services, Worldwide.

www.naifarbman.com

Lesley Gutman

Senior Vice President | 248.860.6800
lgutman@farbman.com

Sheila Fogarty

Senior Vice President | 248.798.9813
fogarty@farbman.com

NO WARRANTY, EXPRESS OR IMPLIED, IS MADE AS TO THE ACCURACY OF THE INFORMATION CONTAINED HEREIN. THIS INFORMATION IS SUBMITTED SUBJECT TO ERRORS, OMISSIONS, CHANGE OF PRICE, RENTAL OR OTHER CONDITIONS, WITHDRAWAL WITHOUT NOTICE, AND IS SUBJECT TO ANY SPECIAL LISTING CONDITIONS IMPOSED BY OUR PRINCIPALS. COOPERATING BROKERS, BUYERS, TENANTS AND OTHER PARTIES WHO RECEIVE THIS DOCUMENT SHOULD NOT RELY ON IT, BUT SHOULD USE IT AS A STARTING POINT OF ANALYSIS, AND SHOULD INDEPENDENTLY CONFIRM THE ACCURACY OF THE INFORMATION CONTAINED HEREIN THROUGH A DUE DILIGENCE REVIEW OF THE BOOKS, RECORDS, FILES AND DOCUMENTS THAT CONSTITUTE RELIABLE SOURCES OF THE INFORMATION DESCRIBED HEREIN. LOGOS ARE FOR IDENTIFICATION PURPOSES ONLY AND MAY BE TRADEMARKS OF THEIR RESPECTIVE COMPANIES. NAI Farbman, INC. CA BRE LIC. #01990696.

31700 MIDDLEBELT FARMINGTON HILLS, MI



FOR LEASE



LEASE INFORMATION

Lease Type:	Gross plus Electric	Lease Term:	Negotiable
		Lease Rate:	\$17.95 SF/yr

AVAILABLE SPACES

SUITE	SIZE (SF)
Suite 125	7,405 SF
Suite 220	2,854 SF
Suite 240	1,930 SF



Commercial Real Estate Services, Worldwide.
www.naifarbman.com

Lesley Gutman
Senior Vice President | 248.860.6800
lgutman@farbman.com

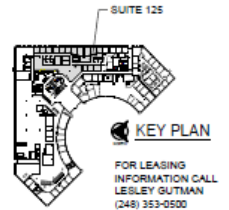
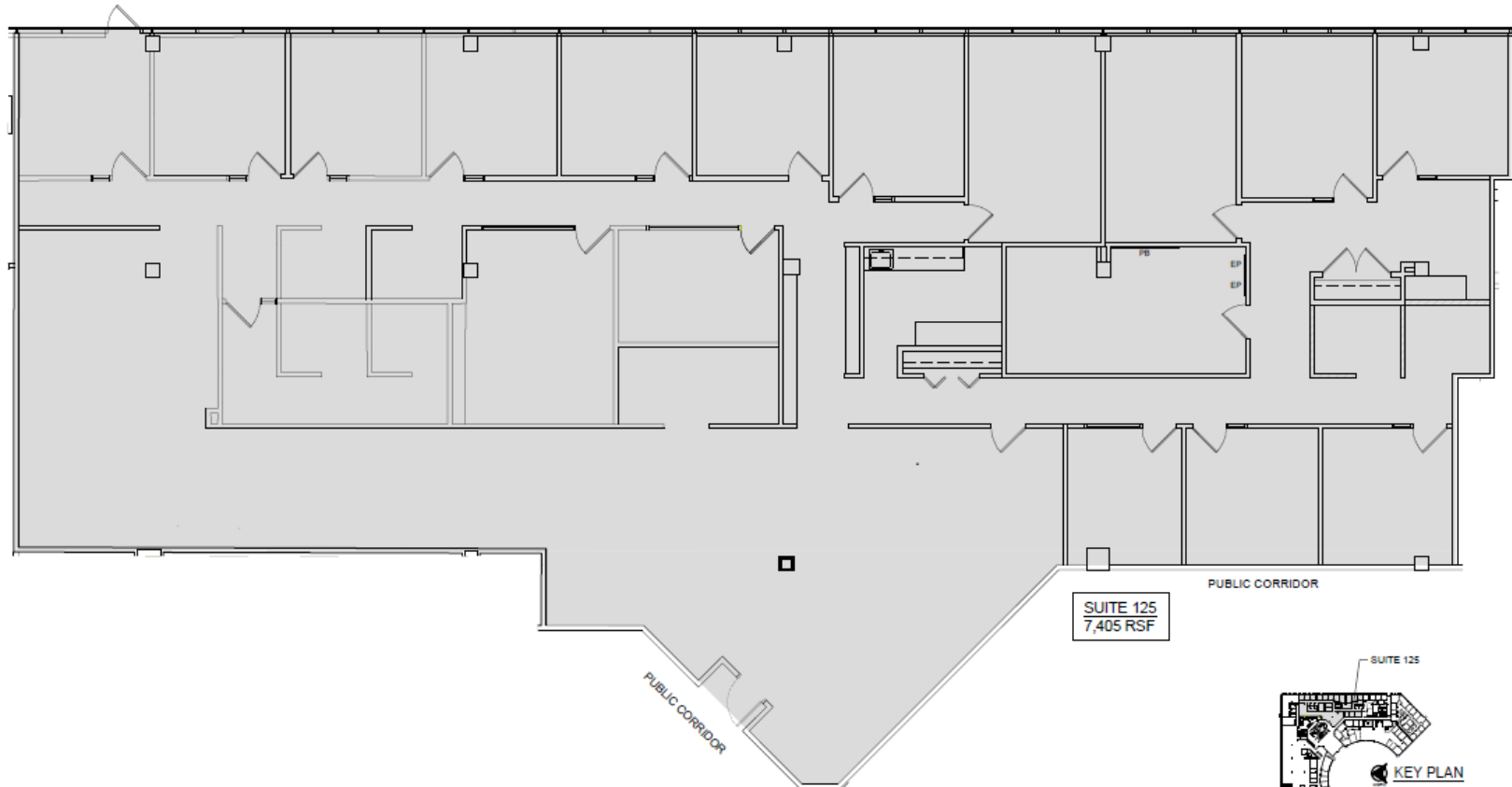
Sheila Fogarty
Senior Vice President | 248.798.9813
fogarty@farbman.com

NO WARRANTY, EXPRESS OR IMPLIED, IS MADE AS TO THE ACCURACY OF THE INFORMATION CONTAINED HEREIN. THIS INFORMATION IS SUBMITTED SUBJECT TO ERRORS, OMISSIONS, CHANGE OF PRICE, RENTAL OR OTHER CONDITIONS, WITHDRAWAL WITHOUT NOTICE, AND IS SUBJECT TO ANY SPECIAL LISTING CONDITIONS IMPOSED BY OUR PRINCIPALS. COOPERATING BROKERS, BUYERS, TENANTS AND OTHER PARTIES WHO RECEIVE THIS DOCUMENT SHOULD NOT RELY ON IT, BUT SHOULD USE IT AS A STARTING POINT OF ANALYSIS, AND SHOULD INDEPENDENTLY CONFIRM THE ACCURACY OF THE INFORMATION CONTAINED HEREIN THROUGH A DUE DILIGENCE REVIEW OF THE BOOKS, RECORDS, FILES AND DOCUMENTS THAT CONSTITUTE RELIABLE SOURCES OF THE INFORMATION DESCRIBED HEREIN. LOGOS ARE FOR IDENTIFICATION PURPOSES ONLY AND MAY BE TRADEMARKS OF THEIR RESPECTIVE COMPANIES. NAI Farbman, INC. CA BRE LIC. #01990696.

31700 MIDDLEBELT FARMINGTON HILLS, MI



FOR LEASE



SUITE 125
31700 MIDDLEBELT, FARMINGTON HILLS
NORTH 3-11-24 SCALE 1/8"=1'-0"

PREPARED BY METRO CAD GROUP



Commercial Real Estate Services, Worldwide.
www.naifarberman.com

Lesley Gutman
Senior Vice President | 248.860.6800
lgutman@farberman.com

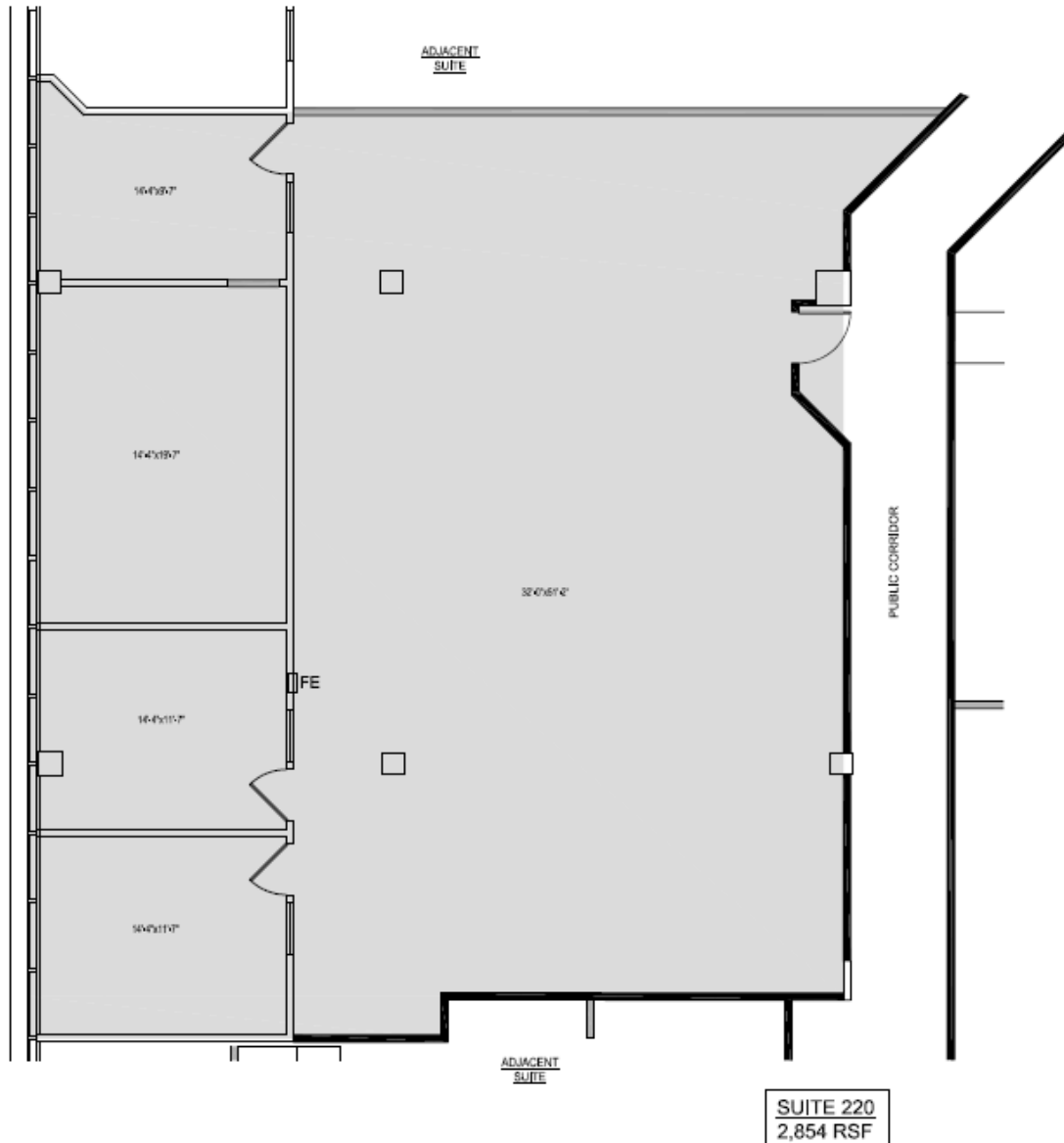
Sheila Fogarty
Senior Vice President | 248.798.9813
fogarty@farberman.com

NO WARRANTY, EXPRESS OR IMPLIED, IS MADE AS TO THE ACCURACY OF THE INFORMATION CONTAINED HEREIN. THIS INFORMATION IS SUBMITTED SUBJECT TO ERRORS, OMISSIONS, CHANGE OF PRICE, RENTAL OR OTHER CONDITIONS, WITHDRAWAL WITHOUT NOTICE, AND IS SUBJECT TO ANY SPECIAL LISTING CONDITIONS IMPOSED BY OUR PRINCIPALS. COOPERATING BROKERS, BUYERS, TENANTS AND OTHER PARTIES WHO RECEIVE THIS DOCUMENT SHOULD NOT RELY ON IT, BUT SHOULD USE IT AS A STARTING POINT OF ANALYSIS, AND SHOULD INDEPENDENTLY CONFIRM THE ACCURACY OF THE INFORMATION CONTAINED HEREIN THROUGH A DUE DILIGENCE REVIEW OF THE BOOKS, RECORDS, FILES AND DOCUMENTS THAT CONSTITUTE RELIABLE SOURCES OF THE INFORMATION DESCRIBED HEREIN. LOGOS ARE FOR IDENTIFICATION PURPOSES ONLY AND MAY BE TRADEMARKS OF THEIR RESPECTIVE COMPANIES. NAI Farberman, INC. CA BRE LIC. #01990696.

31700 MIDDLEBELT FARMINGTON HILLS, MI



FOR LEASE



31700 MIDDLEBELT, FARMINGTON HILLS
SUITE 220

4-5-24

SCALE: 1/8" = 1'-0"



Commercial Real Estate Services, Worldwide.

www.naifarbman.com

Lesley Gutman

Senior Vice President | 248.860.6800
lgutman@farbman.com

Sheila Fogarty

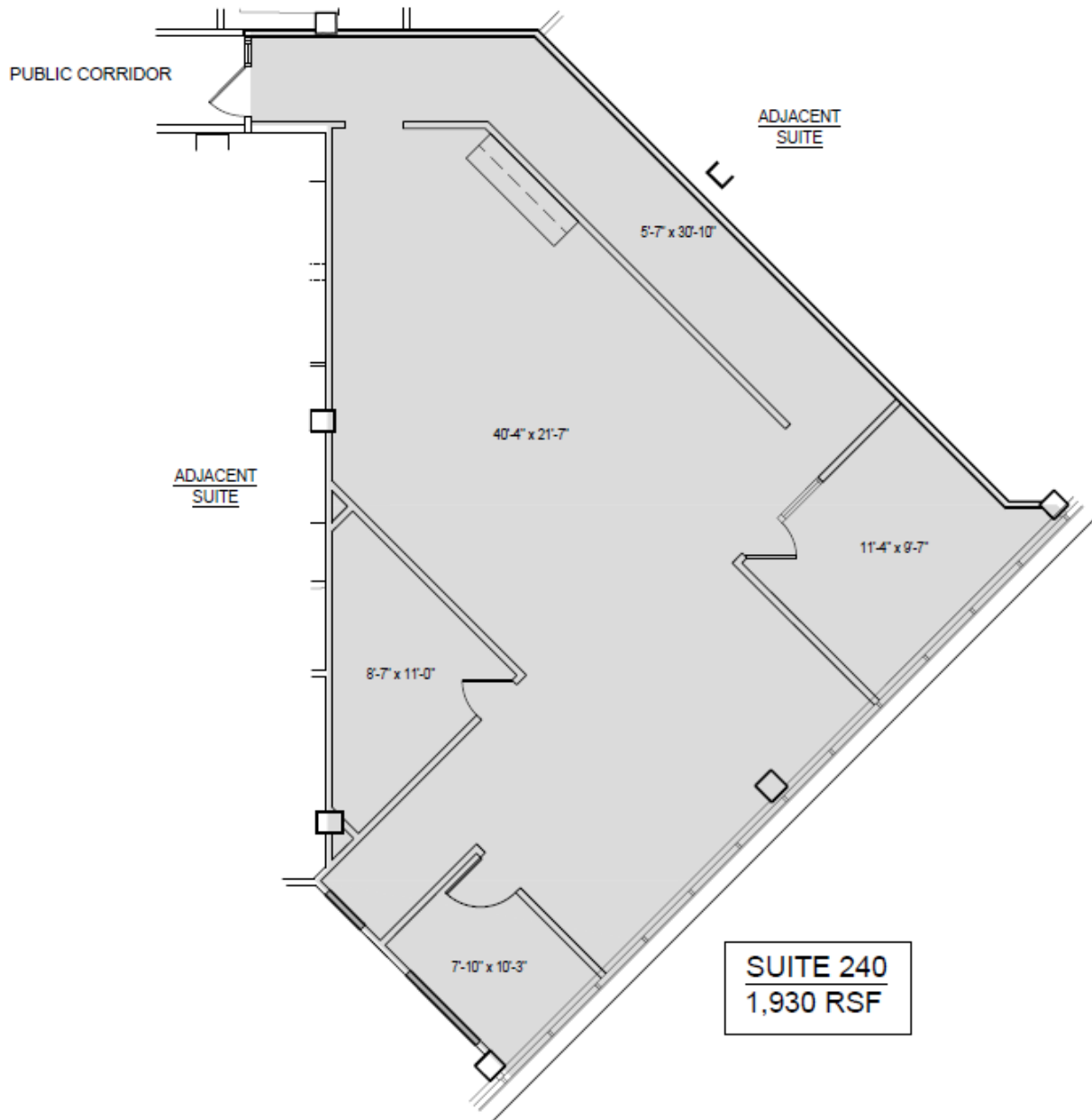
Senior Vice President | 248.798.9813
fogarty@farbman.com

NO WARRANTY, EXPRESS OR IMPLIED, IS MADE AS TO THE ACCURACY OF THE INFORMATION CONTAINED HEREIN. THIS INFORMATION IS SUBMITTED SUBJECT TO ERRORS, OMISSIONS, CHANGE OF PRICE, RENTAL OR OTHER CONDITIONS, WITHDRAWAL WITHOUT NOTICE, AND IS SUBJECT TO ANY SPECIAL LISTING CONDITIONS IMPOSED BY OUR PRINCIPALS. COOPERATING BROKERS, BUYERS, TENANTS AND OTHER PARTIES WHO RECEIVE THIS DOCUMENT SHOULD NOT RELY ON IT, BUT SHOULD USE IT AS A STARTING POINT OF ANALYSIS, AND SHOULD INDEPENDENTLY CONFIRM THE ACCURACY OF THE INFORMATION CONTAINED HEREIN THROUGH A DUE DILIGENCE REVIEW OF THE BOOKS, RECORDS, FILES AND DOCUMENTS THAT CONSTITUTE RELIABLE SOURCES OF THE INFORMATION DESCRIBED HEREIN. LOGOS ARE FOR IDENTIFICATION PURPOSES ONLY AND MAY BE TRADEMARKS OF THEIR RESPECTIVE COMPANIES. NAI Farbman, INC. CA BRE LIC. #01990696.

31700 MIDDLEBELT FARMINGTON HILLS, MI



FOR LEASE



SUITE 240

31700 MIDDLEBELT, FARMINGTON HILLS

4-5-24

NOT TO SCALE



Commercial Real Estate Services, Worldwide.
www.naifarbman.com

Lesley Gutman
Senior Vice President | 248.860.6800
lgutman@farbman.com

Sheila Fogarty
Senior Vice President | 248.798.9813
fogarty@farbman.com

NO WARRANTY, EXPRESS OR IMPLIED, IS MADE AS TO THE ACCURACY OF THE INFORMATION CONTAINED HEREIN. THIS INFORMATION IS SUBMITTED SUBJECT TO ERRORS, OMISSIONS, CHANGE OF PRICE, RENTAL OR OTHER CONDITIONS, WITHDRAWAL WITHOUT NOTICE, AND IS SUBJECT TO ANY SPECIAL LISTING CONDITIONS IMPOSED BY OUR PRINCIPALS. COOPERATING BROKERS, BUYERS, TENANTS AND OTHER PARTIES WHO RECEIVE THIS DOCUMENT SHOULD NOT RELY ON IT, BUT SHOULD USE IT AS A STARTING POINT OF ANALYSIS, AND SHOULD INDEPENDENTLY CONFIRM THE ACCURACY OF THE INFORMATION CONTAINED HEREIN THROUGH A DUE DILIGENCE REVIEW OF THE BOOKS, RECORDS, FILES AND DOCUMENTS THAT CONSTITUTE RELIABLE SOURCES OF THE INFORMATION DESCRIBED HEREIN. LOGOS ARE FOR IDENTIFICATION PURPOSES ONLY AND MAY BE TRADEMARKS OF THEIR RESPECTIVE COMPANIES. NAI Farbman, INC. CA BRE LIC. #01990696.