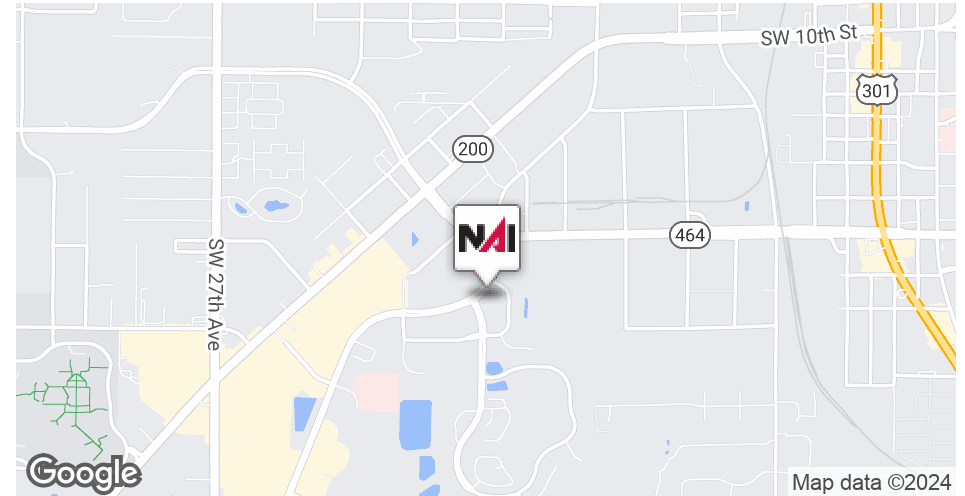


FOR LEASE
NEGOTIABLE



Property Highlights

- 1850sf available in an office building 5,959sf, with breakroom and restroom in common area
- Marion County Parcel ID 23654-012-01, Year Built 2001, Zoned B5
- Located in Cala Hills 1 block off of Easy Street
- Floor Diagram available upon request

Demographics	1 Mile	5 Miles	10 Miles
Total Households	1,409	27,934	76,084
Total Population	3,830	71,829	188,809
Average HH Income	\$48,982	\$57,116	\$54,981



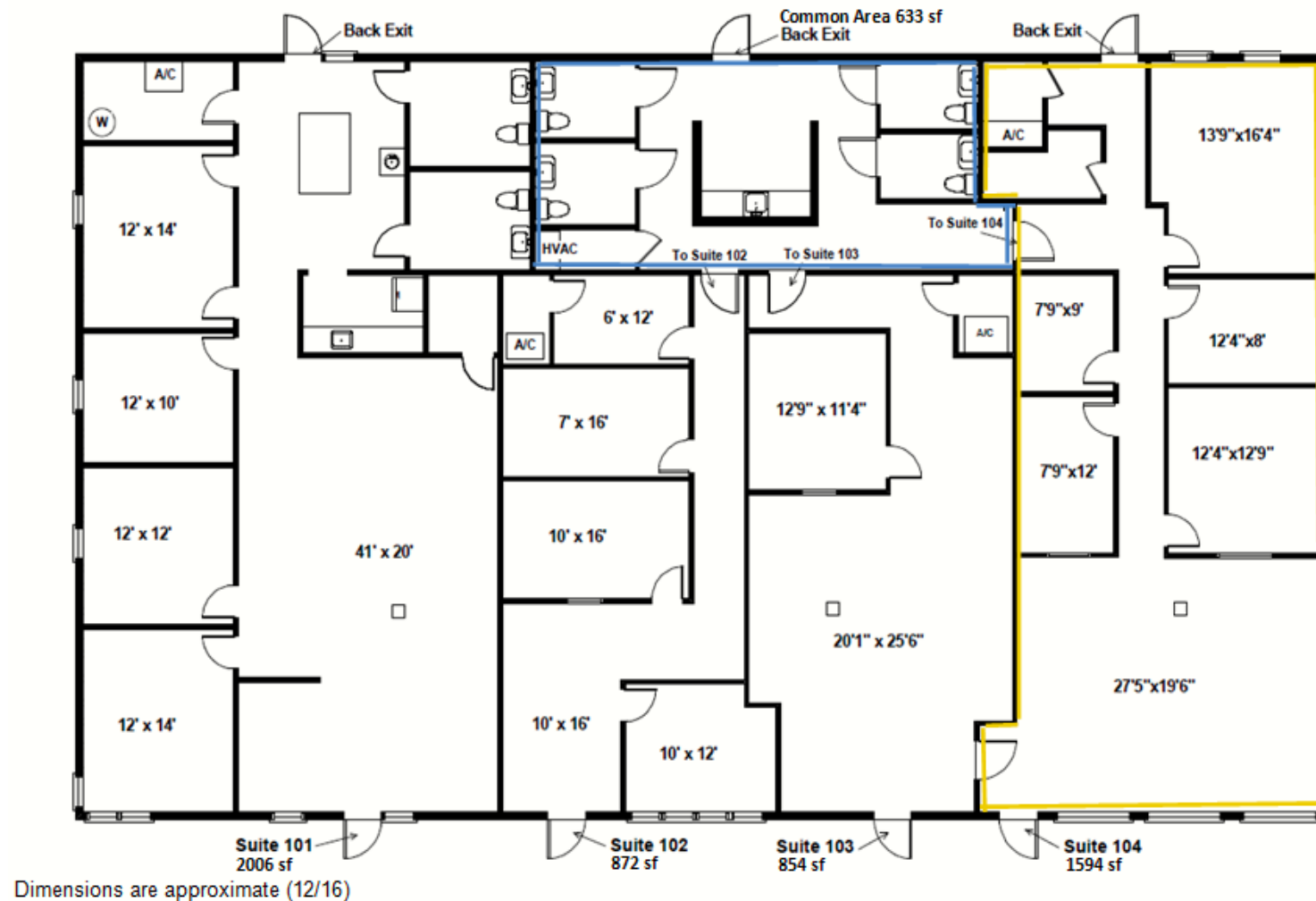
Randy Buss, CCIM, SIOR
Managing Partner
352.482.0777 x7214
randy@naiheritage.com

2605 SW 33rd St. Suite 200
Ocala, FL 34471
352.482.0777
naiheritage.com



Randy Buss, CCIM, SIOR
Managing Partner
352.482.0777 x7214
randy@naiheritage.com

2605 SW 33rd St. Suite 200
Ocala, FL 34471
352.482.0777
naiheritage.com



Randy Buss, CCIM, SIOR
Managing Partner
352.482.0777 x7214
randy@naiheritage.com

2605 SW 33rd St. Suite 200
Ocala, FL 34471
352.482.0777
naiheritage.com



Legend

■ Unavailable

Randy Buss, CCIM, SIOR
Managing Partner
352.482.0777 x7214
randy@naiheritage.com

2605 SW 33rd St. Suite 200
Ocala, FL 34471
352.482.0777
naiheritage.com

Available Spaces

Suite	Tenant	Size	Type	Rate	Description
■ 103	-	854 SF	Modified Gross	-	-
■ 104	104	1,850 SF	Modified Gross	-	Open entrance area with 5 rooms, varying in size. Common area in back; restrooms and kitchen. Available 2/1/2023. 1850sf x \$14.00sf/yr gross rent = \$2,158.34 monthly

Randy Buss, CCIM, SIOR
Managing Partner
352.482.0777 x7214
randy@naiheritage.com

2605 SW 33rd St. Suite 200
Ocala, FL 34471
352.482.0777
naiheritage.com