

For Lease

# Save-A-Lot Center

1,200 - 6,875 SF | \$6.00 - 9.00 SF/yr



## Save-A-Lot Center

1075 East Lexington Road  
Danville, Kentucky 40422

### Property Highlights

- +/-28,425 sf neighborhood center anchored by Save-A-Lot
- The center is located on East Lexington Road across from the Greenleaf Shopping Center
- Suite 1075: +/-1,200 SF w/pick-up window for lease; Available 6/1/24
- Suite 1081: +/-6,875 SF for lease
- +/-15,357 ('10) ADT on East Lexington Road in front of the site
- Ample parking
- Rental Rate: \$6.00 - \$9.00 PSF

### OFFERING SUMMARY

Available SF	1,200 - 6,875 SF
Lease Rate	\$6.00 - 9.00 SF/yr (NNN)
Building Size	28,425 SF

### DEMOGRAPHICS

Stats	Population	Avg. HH Income
3 Miles	17,722	\$61,575
5 Miles	23,393	\$66,012
10 Miles	57,948	\$58,876

For more information

**Paul Ray Smith, Jr, Executive Vice President**

O: 859 422 4401 | C: 859 420 2200  
prsmith@naiisaac.com

**Jamie Adams, CCIM, Vice President**

O: 859 422 4413 | C: 859 396 5468  
jadams@naiisaac.com

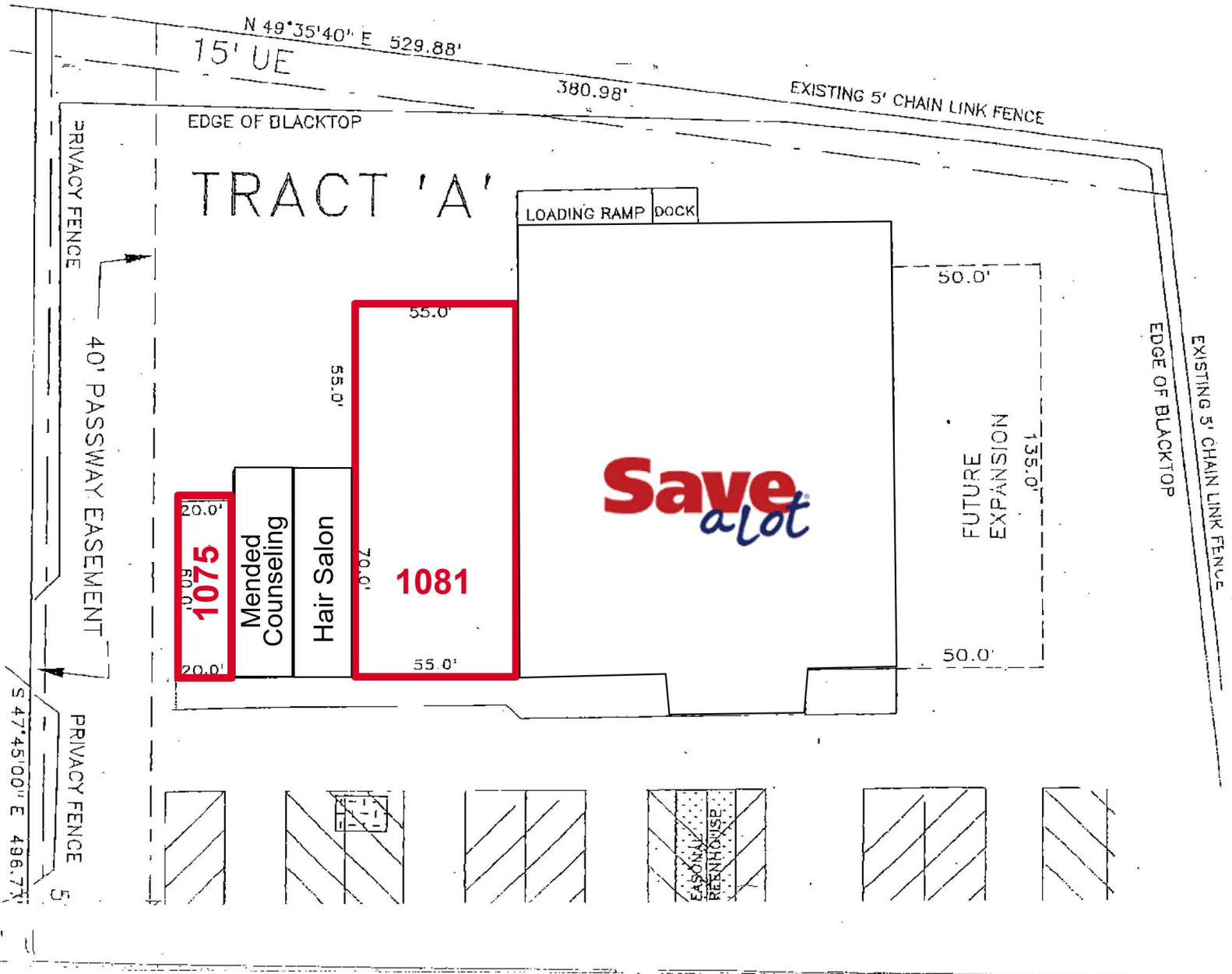
**Zach Smith, Senior Associate**

O: 859 422 4406 | C: 859 333 8029  
zachsmith@naiisaac.com



Commercial Real Estate Services, Worldwide.

771 Corporate Drive, Suite 500 in  
Lexington, KY 40503  
859 224 2000 tel  
naiisaac.com



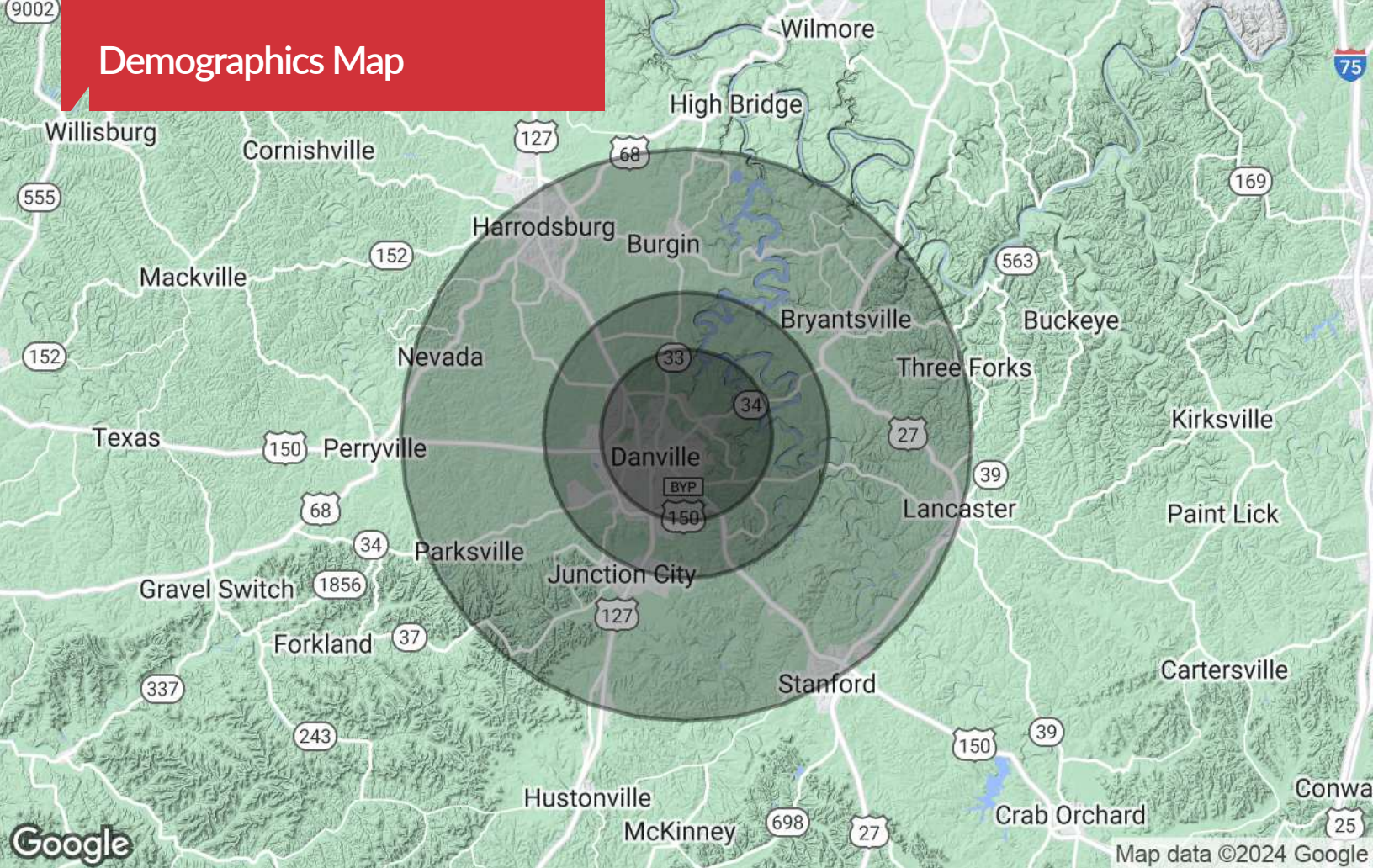


## Location Maps





# Demographics Map



## Population

	3 Miles	5 Miles	10 Miles
TOTAL POPULATION	17,722	23,393	57,948
MEDIAN AGE	44.6	39.2	40.1
MEDIAN AGE (MALE)	42.7	36.4	38.3
MEDIAN AGE (FEMALE)	45.7	41.5	41.9

## Households & Income

	3 Miles	5 Miles	10 Miles
TOTAL HOUSEHOLDS	6,639	8,690	22,679
# OF PERSONS PER HH	2.5	2.7	2.6
AVERAGE HH INCOME	\$61,575	\$66,012	\$58,876
AVERAGE HOUSE VALUE	\$149,804	\$147,634	\$159,293

\* Demographic data derived from 2020 ACS - US Census