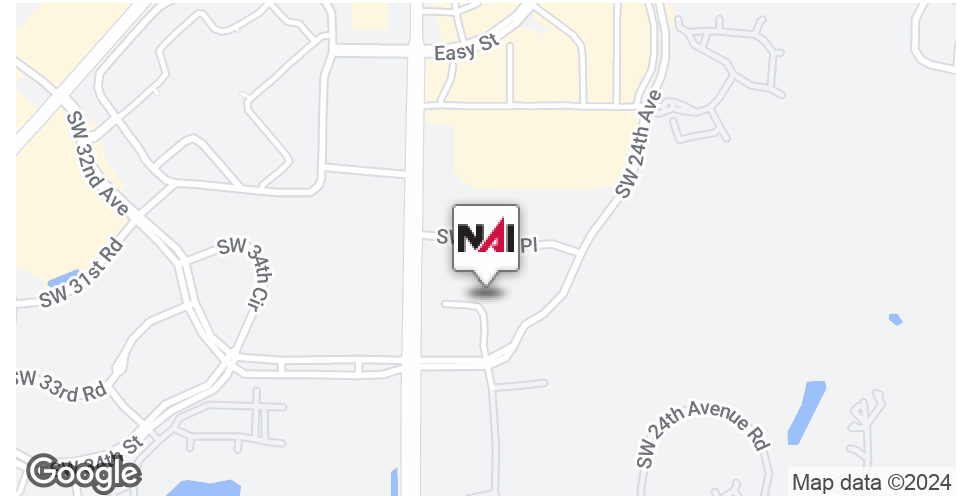


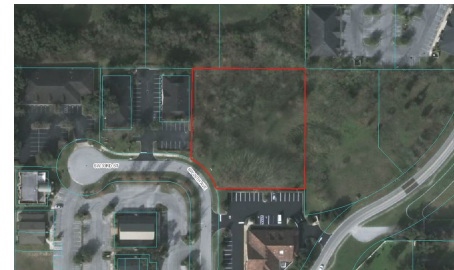
**FOR SALE**  
\$285,000



### Property Highlights

- For Sale for development or investment
- 1.35 acres
- Highest and best use zoning O1
- Ingress and egress from SW 33rd Street
- Marion County Parcel ID #23720-006-00
- Located in Shady Road Professional Center, next to several professional offices
- Centrally located, one mile from I-75

Demographics	3 Miles	5 Miles	10 Miles
<b>Total Households</b>	9,061	24,494	79,342
<b>Total Population</b>	24,874	62,988	193,722
<b>Average HH Income</b>	\$56,804	\$58,804	\$54,591



### Randy Buss, CCIM, SIOR

Managing Partner  
352.482.0777 x7214  
randy@naiheritage.com

2605 SW 33rd St. Suite 200  
Ocala, FL 34471  
352.482.0777  
[naiheritage.com](http://naiheritage.com)





**Randy Buss, CCIM, SIOR**  
 Managing Partner  
 352.482.0777 x7214  
 randy@naiheritage.com

2605 SW 33rd St. Suite 200  
 Ocala, FL 34471  
 352.482.0777  
 naiheritage.com