

AN OFFICE LEASE OPPORTUNITY

# CARNEGIE CENTRE

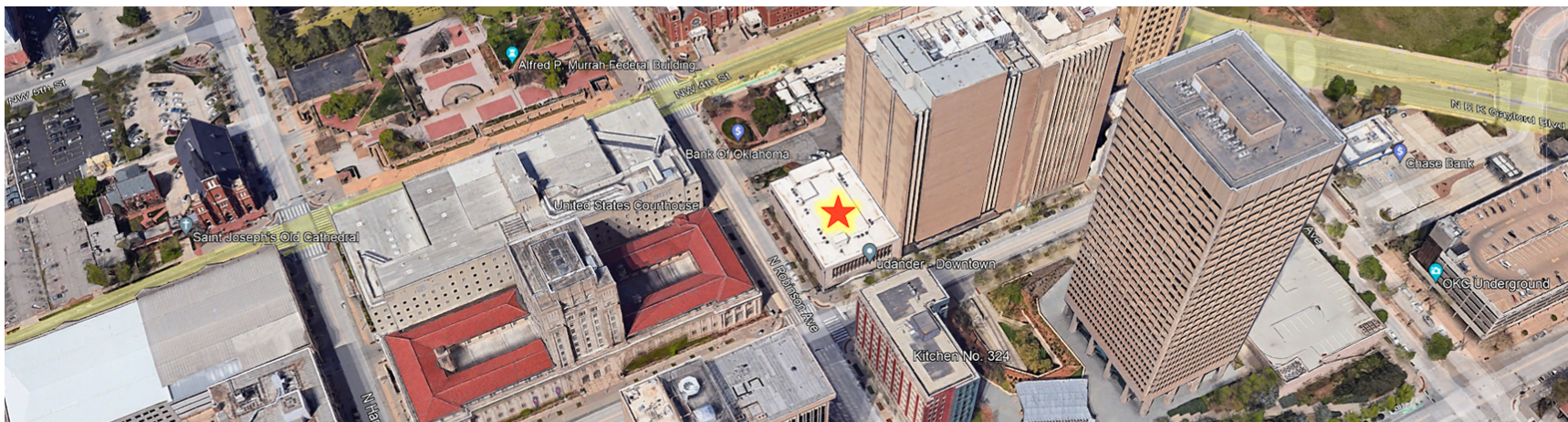
131 DEAN A MCGEE AVE, OKLAHOMA CITY, OK 73102





# CARNEGIE CENTRE

131 DEAN A MCGEE AVE, OKLAHOMA CITY, OK 73102



## OFFERING SUMMARY

Lower Level: 11,100 SF  
\$15.00/SF  
(Full Service)

Office 316 (3rd Level): 146 SF  
\$400/mo.  
(Utilities Paid)

Building Size: 66,000 SF

Year Built: 1953

Year Renovated: 2014

## PROPERTY OVERVIEW

Carnegie Centre is a Mixed-Use Historic Renovation of the former Downtown Library. Located on the Corner of Dean A. McGee and N Robinson, in the Heart of Downtown OKC's Central Business District. Carnegie Centre Accommodates Commercial Tenants on the Ground Floor and Residential Lofts on the Upper Floors. Commercial Building Tenants Include Udander Spa, Beck Design, Jack's Bakehouse, and Equity Commercial Realty Advisors.

## PROPERTY HIGHLIGHTS

- Entire Lower Level (Available 1/1/25) - Former UCO Downtown Campus Consisting of a Large Open Common Area, 6 Large Classrooms, an Administrative Office, Multiple Storage Closets, Men's & Women's Restrooms, Controlled Access & Security Cameras
- 3rd Level Office Features Large Windows with views of Downtown OKC
- On-Site Owner/Manager | Controlled Building Access & Security Cameras | Two Elevators
- National Register of Historic Places | Located on Streetcar Route | Across from OKC Underground
- VISIT OUR WEBSITE ([www.carnegieokc.com](http://www.carnegieokc.com)) | Available Residential Lofts for Lease
- Judy J. Hatfield, Broker/Owner

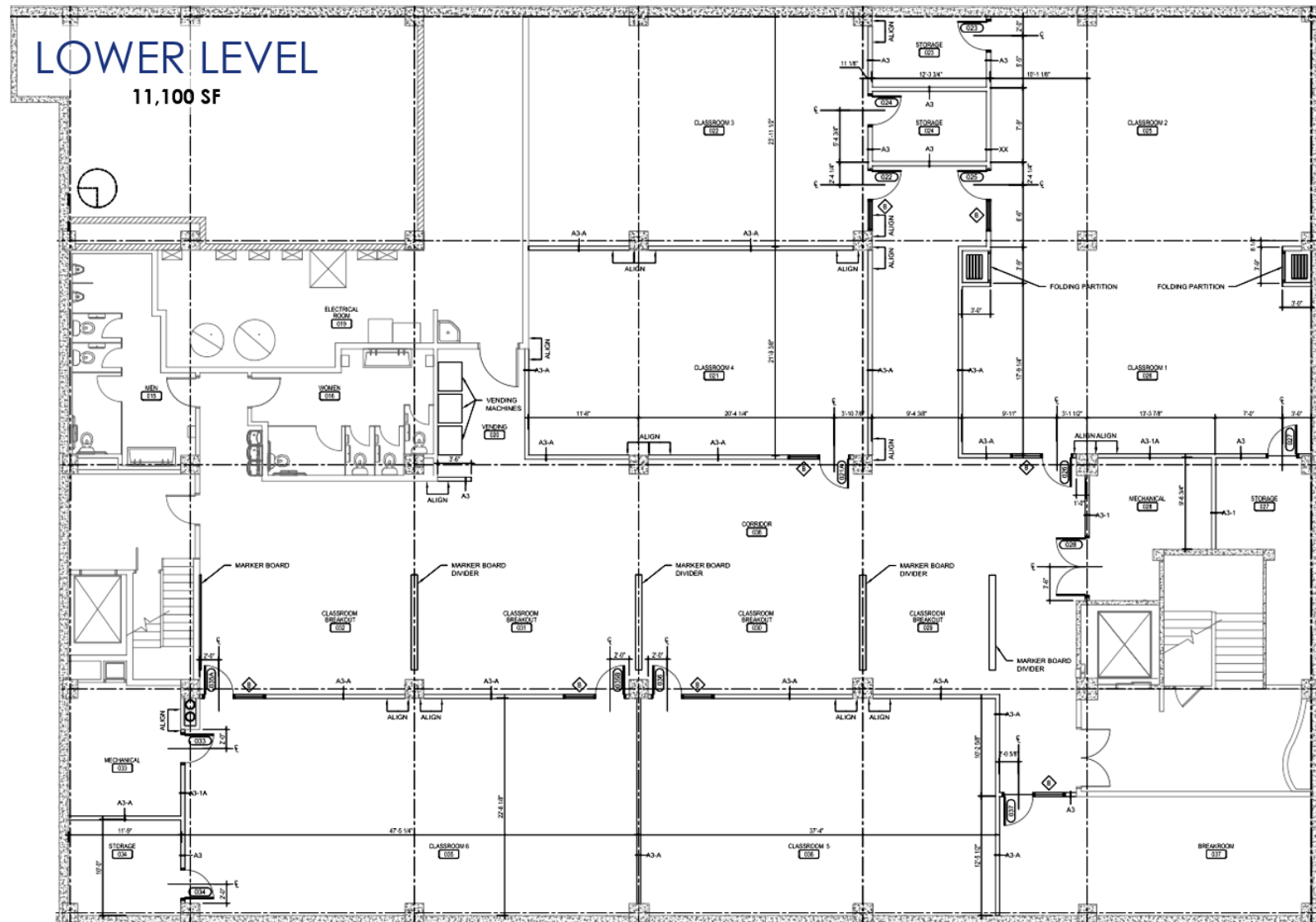
### JUDY J. HATFIELD, CCIM

Equity Commercial Realty Advisors, LLC  
[jjhatfield@ccim.net](mailto:jjhatfield@ccim.net)

(405) 640- 6167 cell  
(405) 364- 5300 office

AVAILABLE - LOWER LEVEL

CARNEGIE CENTRE



**JUDY J. HATFIELD, CCIM**

Equity Commercial Realty Advisors, LLC  
jjhatfield@ccim.net

(405) 640- 6167 cell  
(405) 364- 5300 office



AN OFFICE LEASE OPPORTUNITY  
**AVAILABLE - LOWER LEVEL**  
CARNEGIE CENTRE



**JUDY J. HATFIELD, CCIM**

Equity Commercial Realty Advisors, LLC  
jjhatfield@ccim.net

(405) 640- 6167 cell  
(405) 364- 5300 office





**JUDY J. HATFIELD, CCIM**

Equity Commercial Realty Advisors, LLC  
jjhatfield@ccim.net

(405) 640- 6167 cell  
(405) 364- 5300 office



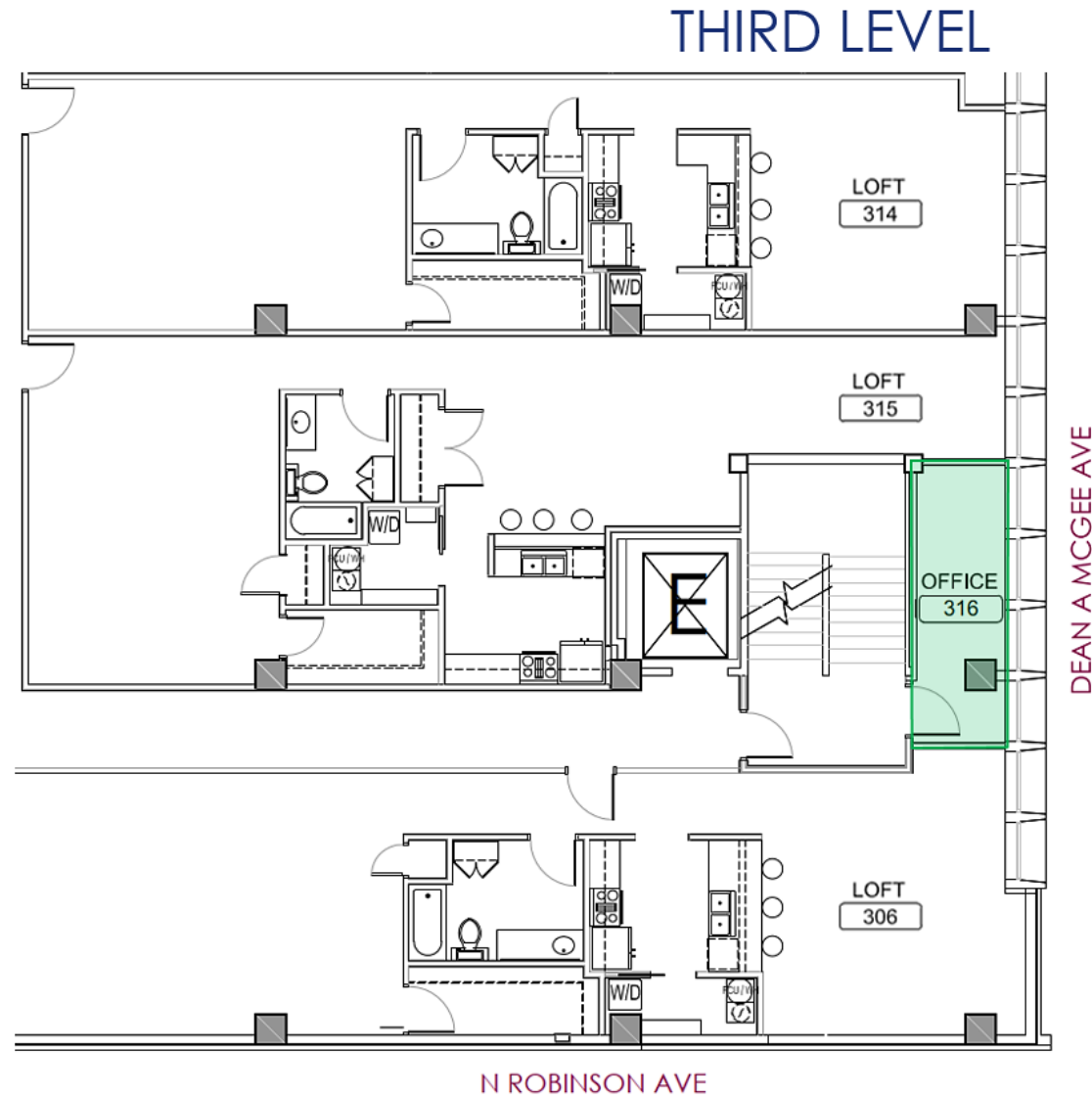


**JUDY J. HATFIELD, CCIM**

Equity Commercial Realty Advisors, LLC  
jjhatfield@ccim.net

(405) 640- 6167 cell  
(405) 364- 5300 office





**JUDY J. HATFIELD, CCIM**

Equity Commercial Realty Advisors, LLC  
jjhatfield@ccim.net

(405) 640- 6167 cell  
(405) 364- 5300 office

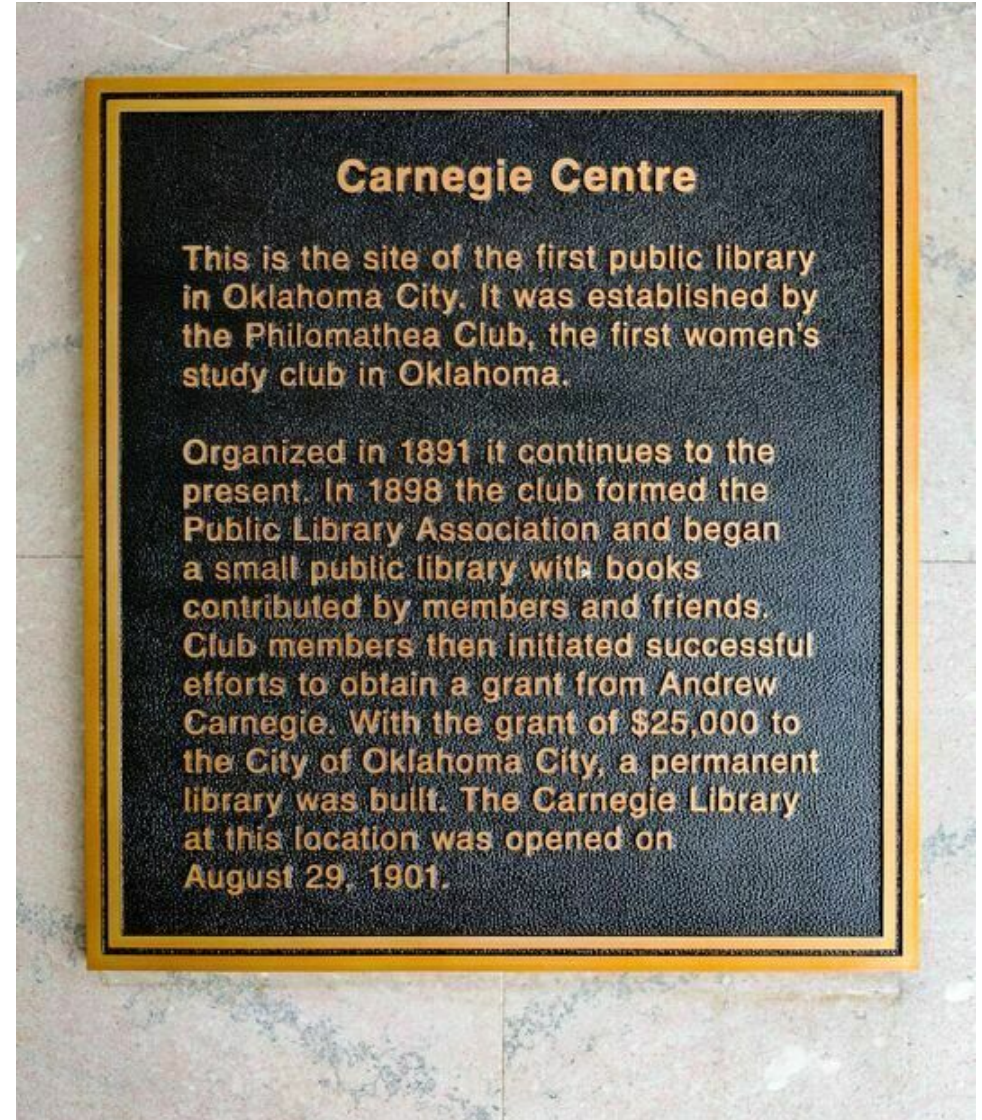


# CARNEGIE CENTRE

131 DEAN A MCGEE AVE, OKLAHOMA CITY, OK 73102



Carnegie Library - 1954



## Carnegie Centre

This is the site of the first public library in Oklahoma City. It was established by the Philomathean Club, the first women's study club in Oklahoma.

Organized in 1891 it continues to the present. In 1898 the club formed the Public Library Association and began a small public library with books contributed by members and friends. Club members then initiated successful efforts to obtain a grant from Andrew Carnegie. With the grant of \$25,000 to the City of Oklahoma City, a permanent library was built. The Carnegie Library at this location was opened on August 29, 1901.

**JUDY J. HATFIELD, CCIM**

Equity Commercial Realty Advisors, LLC  
jjhatfield@ccim.net

(405) 640- 6167 cell  
(405) 364- 5300 office



# CARNEGIE CENTRE

131 DEAN A MCGEE AVE, OKLAHOMA CITY, OK 73102



**JUDY J. HATFIELD, CCIM**

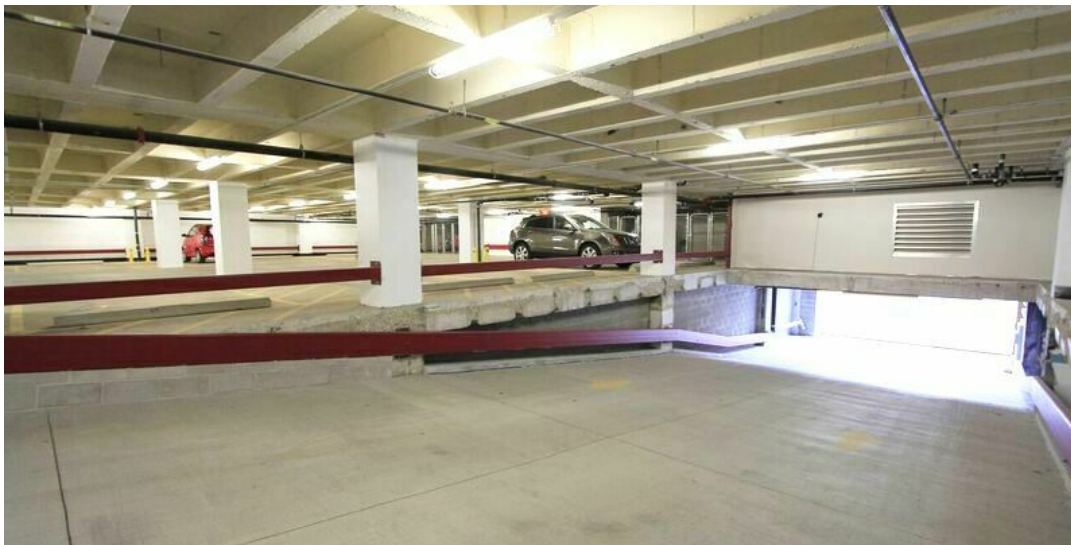
Equity Commercial Realty Advisors, LLC  
jjhatfield@ccim.net

(405) 640- 6167 cell  
(405) 364- 5300 office



# SECURE PARKING GARAGE

CARNEGIE CENTRE

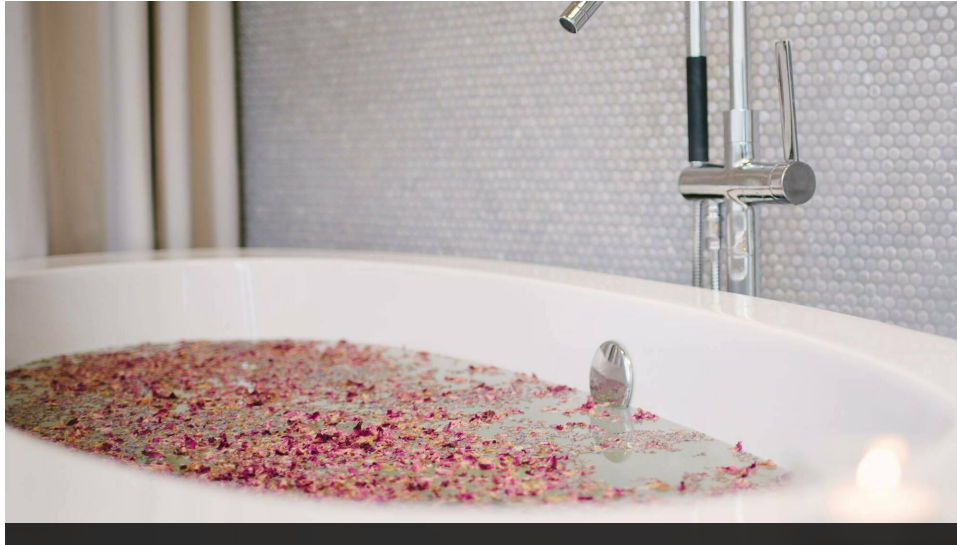


**JUDY J. HATFIELD, CCIM**

Equity Commercial Realty Advisors, LLC  
jjhatfield@ccim.net

(405) 640- 6167 cell  
(405) 364- 5300 office

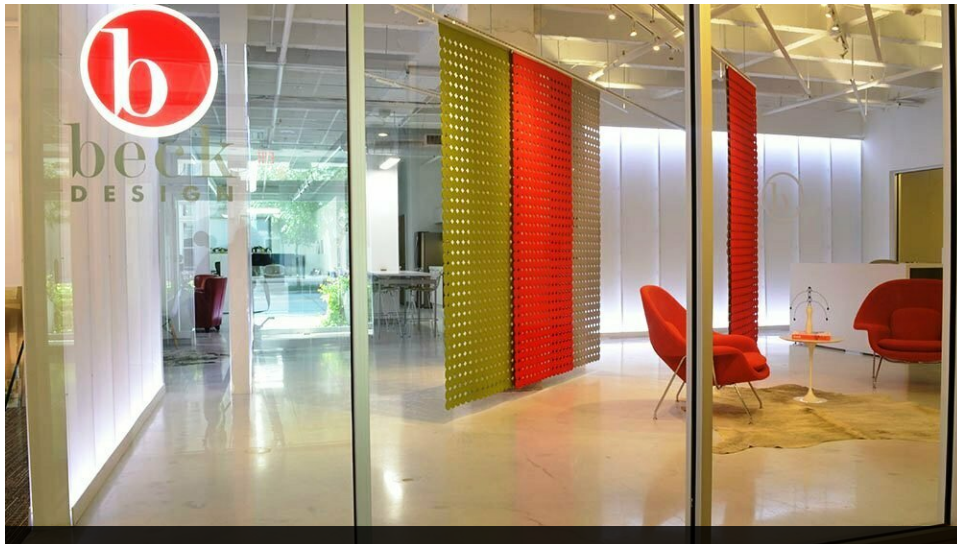




# udånder

TIME TO EXHALE

[www.udander.com](http://www.udander.com)



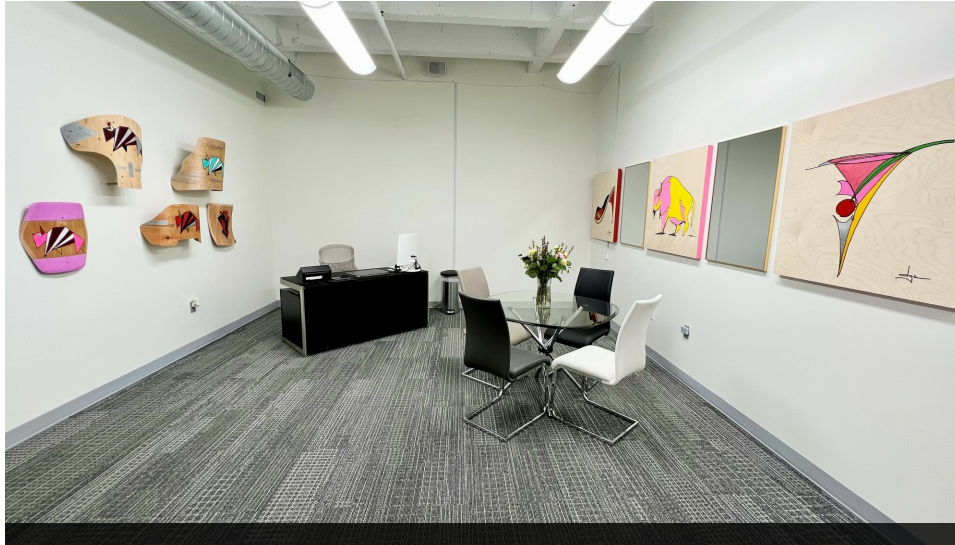
[www.beckdesign.com](http://www.beckdesign.com)

**JUDY J. HATFIELD, CCIM**

Equity Commercial Realty Advisors, LLC  
[jjhatfield@ccim.net](mailto:jjhatfield@ccim.net)

(405) 640- 6167 cell  
(405) 364- 5300 office





**ER** Equity  
Commercial  
Realty  
Advisors  
SINCE 1981

[www.equityrealty.net](http://www.equityrealty.net)



[www.jacksbakehouseokc.com](http://www.jacksbakehouseokc.com)

**JUDY J. HATFIELD, CCIM**

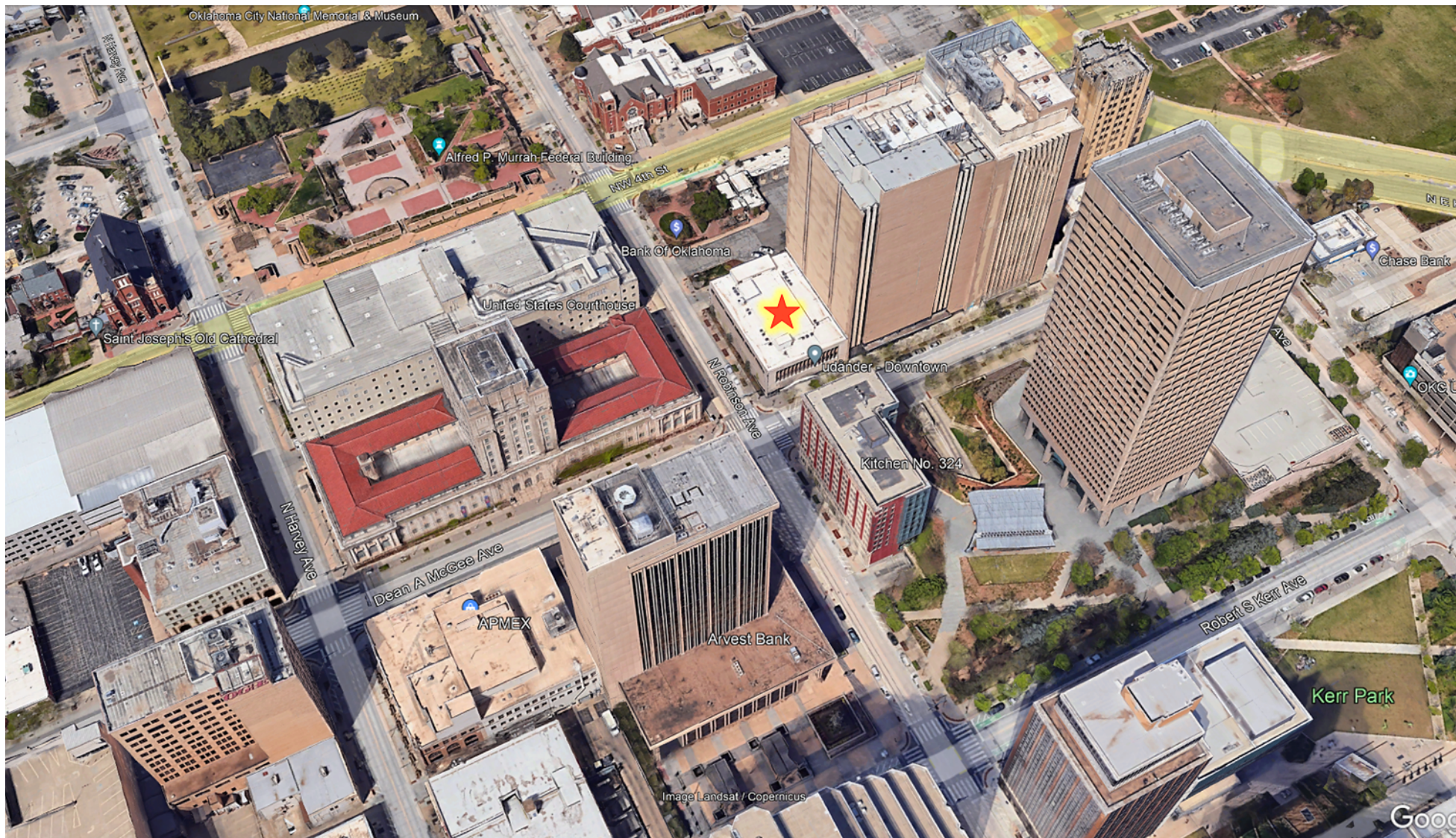
Equity Commercial Realty Advisors, LLC  
[jjhatfield@ccim.net](mailto:jjhatfield@ccim.net)

(405) 640- 6167 cell  
(405) 364- 5300 office



# CARNEGIE CENTRE

131 DEAN A MCGEE AVE, OKLAHOMA CITY, OK 73102



**JUDY J. HATFIELD, CCIM**

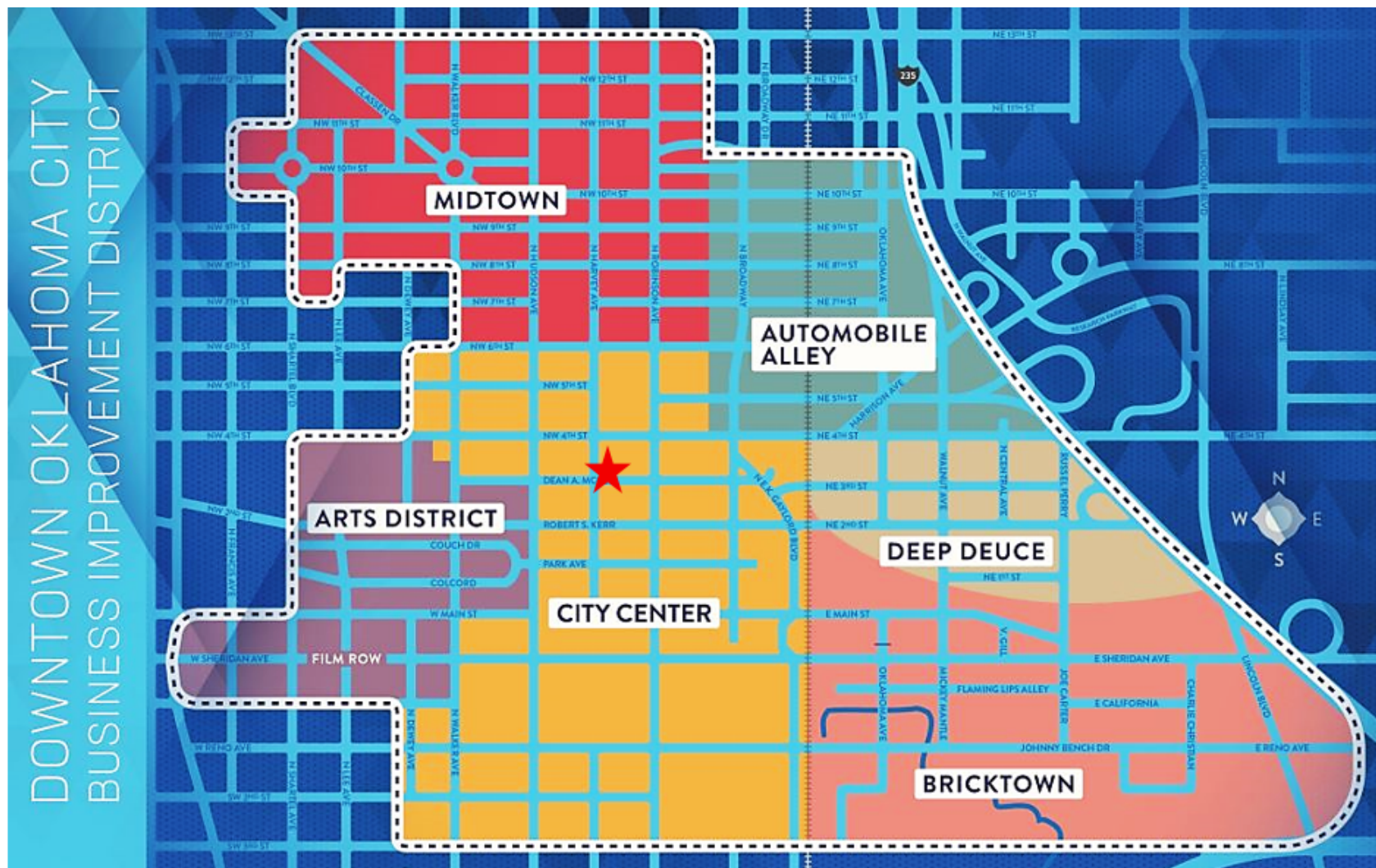
Equity Commercial Realty Advisors, LLC  
jjhatfield@ccim.net

(405) 640- 6167 cell  
(405) 364- 5300 office



# CARNEGIE CENTRE

131 DEAN A MCGEE AVE, OKLAHOMA CITY, OK 73102



★ **CARNEGIE CENTRE** – 131 Dean A. McGee Avenue

**JUDY J. HATFIELD, CCIM**

Equity Commercial Realty Advisors, LLC  
jjhatfield@ccim.net

(405) 640- 6167 cell  
(405) 364- 5300 office