

PRICE REDUCED

# 2001 GENERAL ELECTRIC RD

BLOOMINGTON, IL 61704

LAND FOR SALE

**MADISON MALOOF**

309.693.3000

[madison@maloofcom.com](mailto:madison@maloofcom.com)



LAND FOR SALE

# 2001 GENERAL ELECTRIC RD

BLOOMINGTON, IL 61704

PRICE REDUCED



Sale Price

**\$599,000**

## OFFERING SUMMARY

Total Lot Size:	4.55 Acres
Price / Acre:	\$131,648
Zoning:	B-2: General Business District

## PROPERTY OVERVIEW

The total area of the property is 4.55 Acres. This parcel resides within a floodplain area, which results in a total of approximately 2.52 usable acres for development. This location provides an excellent opportunity to have access coming in from both General Electric & Hershey Roads. Well-suited for a gas station or facility that requires a drive-through area.

Additional information about the possibilities of development at this location are available upon request. The City of Bloomington has ample research on future development opportunities at this site as well.

## DEMOGRAPHICS

	1 MILE	3 MILES	5 MILES
Total Households	4,694	23,028	49,126
Total Population	11,949	56,223	131,319
Average HH Income	\$85,567	\$82,952	\$72,551

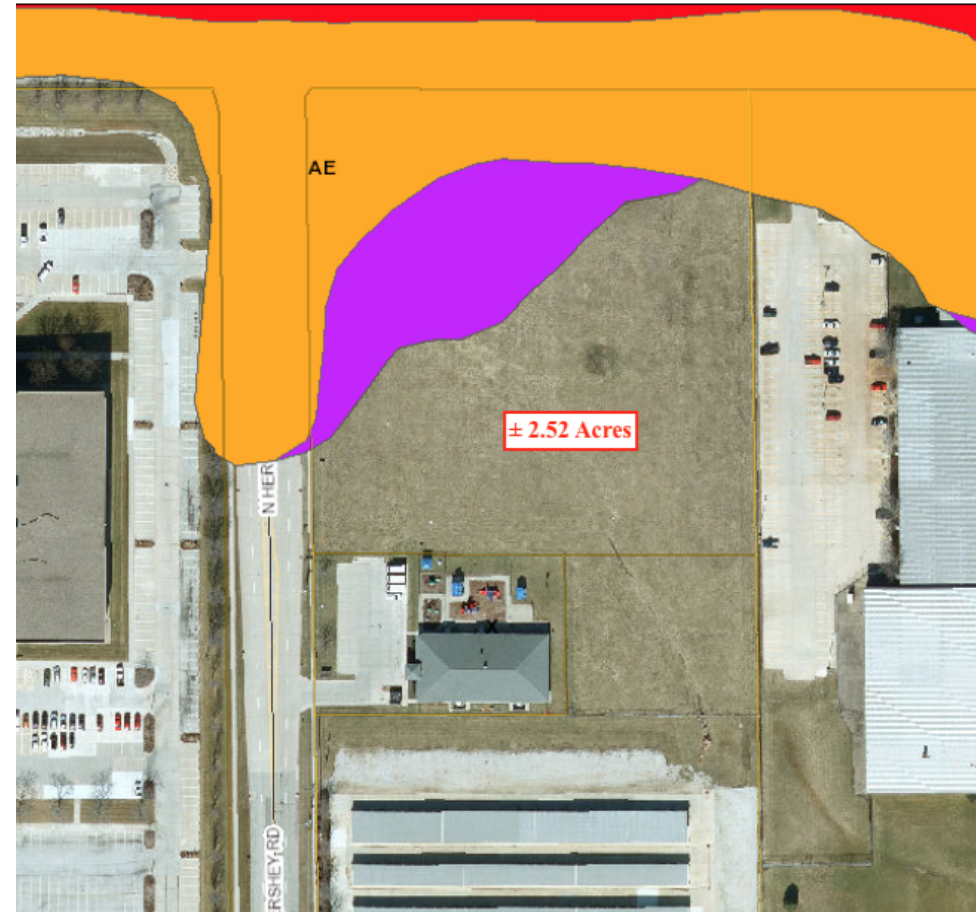
**MADISON MALOOF**

madison@malooftcom.com

2411 W. Cornerstone Ct, Peoria, IL 61614 | 309.693.3000 | malooftcommercial.com



# 2001 GENERAL ELECTRIC RD



0  
|  
0

McGIS, FEMA, |



**MALOOOF**  
COMMERCIAL  
Real Estate Company



LAND FOR SALE

# 2001 GENERAL ELECTRIC RD

BLOOMINGTON, IL 61704

PRICE REDUCED



**MADISON MALOOF**

madison@maloofofcom.com

2411 W. Cornerstone Ct, Peoria, IL 61614 | 309.693.3000 | maloofofcommercial.com

