



Age by Sex Profile

Shoppes at Forest Green
10023 Forest Green Blvd, Louisville, Kentucky, 40223
Ring: 1 mile radius

Prepared by Charlotte Hollkamp
Latitude: 38.26339
Longitude: -85.57101

Summary	Census 2010	2020	2025	2020-2025 Change	2020-2025 Annual Rate
Population	8,606	9,595	10,773	1,178	2.34%
Households	3,404	3,780	4,235	455	2.30%
Average Household Size	2.47	2.48	2.49	0.01	0.08%
Median Age	41.5	43.7	45.5	1.8	0.81%
Median Male Age	40.3	42.7	44.6	1.9	0.87%
Median Female Age	42.6	44.8	46.4	1.6	0.70%

Total Population by Age	Census 2010		2020		2025	
	Number	Percent	Number	Percent	Number	Percent
Total	8,609	100.0%	9,591	100.0%	10,772	100.0%
0 - 4	523	6.1%	501	5.2%	542	5.0%
5 - 9	514	6.0%	570	5.9%	616	5.7%
10 - 14	602	7.0%	662	6.9%	690	6.4%
15 - 19	612	7.1%	594	6.2%	704	6.5%
20 - 24	403	4.7%	429	4.5%	407	3.8%
25 - 29	490	5.7%	476	5.0%	469	4.4%
30 - 34	505	5.9%	527	5.5%	581	5.4%
35 - 39	490	5.7%	603	6.3%	624	5.8%
40 - 44	528	6.1%	583	6.1%	686	6.4%
45 - 49	697	8.1%	549	5.7%	662	6.1%
50 - 54	755	8.8%	583	6.1%	627	5.8%
55 - 59	677	7.9%	742	7.7%	655	6.1%
60 - 64	620	7.2%	757	7.9%	802	7.4%
65 - 69	382	4.4%	656	6.8%	828	7.7%
70 - 74	281	3.3%	552	5.8%	679	6.3%
75 - 79	221	2.6%	320	3.3%	558	5.2%
80 - 84	168	2.0%	239	2.5%	318	3.0%
85+	137	1.6%	248	2.6%	324	3.0%
18+	6,534	75.9%	7,458	77.7%	8,440	78.3%
21+	6,293	73.1%	7,191	74.9%	8,144	75.6%

Total Population by Age Dependency	Census 2010		2020		2025	
	Number	Percent	Number	Percent	Number	Percent
Total	8,609	100.0%	9,591	100.0%	10,772	100.0%
Child (<18)	2,073	24.1%	2,138	22.3%	2,333	21.7%
Working-Age (18-64)	5,346	62.1%	5,442	56.7%	5,732	53.2%
Senior (Age 65+)	1,190	13.8%	2,016	21.0%	2,708	25.1%
Child Dependency Ratio	38.8	-	39.3	-	40.7	-
Age Dependency Ratio	61.0	-	76.3	-	87.9	-
Senior Dependency Ratio	22.3	-	37.0	-	47.2	-

Data Note: Detail may not sum to totals due to rounding. Dependency ratios represent the number of dependents per 100 persons of the working-age population aged 18 to 64.

Source: U.S. Census Bureau, Census 2010 Summary File 1. Esri forecasts for 2020 and 2025.

July 15, 2020



Age by Sex Profile

Shoppes at Forest Green
10023 Forest Green Blvd, Louisville, Kentucky, 40223
Ring: 1 mile radius

Prepared by Charlotte Hollkamp
Latitude: 38.26339
Longitude: -85.57101

Male Population by Age	Census 2010		2020		2025	
	Number	Percent	Number	Percent	Number	Percent
Total	4,095	100.0%	4,556	100.0%	5,126	100.0%
0 - 4	261	6.4%	249	5.5%	271	5.3%
5 - 9	255	6.2%	287	6.3%	309	6.0%
10 - 14	291	7.1%	319	7.0%	336	6.6%
15 - 19	294	7.2%	277	6.1%	334	6.5%
20 - 24	194	4.7%	209	4.6%	206	4.0%
25 - 29	236	5.8%	238	5.2%	221	4.3%
30 - 34	258	6.3%	252	5.5%	294	5.7%
35 - 39	244	6.0%	287	6.3%	294	5.7%
40 - 44	248	6.1%	297	6.5%	327	6.4%
45 - 49	330	8.1%	268	5.9%	329	6.4%
50 - 54	351	8.6%	267	5.9%	306	6.0%
55 - 59	314	7.7%	354	7.8%	301	5.9%
60 - 64	297	7.3%	350	7.7%	382	7.5%
65 - 69	201	4.9%	305	6.7%	388	7.6%
70 - 74	119	2.9%	260	5.7%	311	6.1%
75 - 79	96	2.3%	157	3.4%	255	5.0%
80 - 84	67	1.6%	93	2.0%	151	2.9%
85+	39	1.0%	85	1.9%	113	2.2%
18+	3,084	75.3%	3,516	77.2%	3,983	77.7%

Female Population by Age	Census 2010		2020		2025	
	Number	Percent	Number	Percent	Number	Percent
Total	4,514	100.0%	5,039	100.0%	5,647	100.0%
0 - 4	262	5.8%	252	5.0%	272	4.8%
5 - 9	260	5.8%	284	5.6%	307	5.4%
10 - 14	311	6.9%	343	6.8%	354	6.3%
15 - 19	318	7.0%	317	6.3%	370	6.6%
20 - 24	209	4.6%	220	4.4%	201	3.6%
25 - 29	255	5.6%	237	4.7%	248	4.4%
30 - 34	248	5.5%	276	5.5%	287	5.1%
35 - 39	247	5.5%	316	6.3%	331	5.9%
40 - 44	280	6.2%	287	5.7%	358	6.3%
45 - 49	366	8.1%	281	5.6%	333	5.9%
50 - 54	404	8.9%	316	6.3%	322	5.7%
55 - 59	363	8.0%	388	7.7%	354	6.3%
60 - 64	323	7.2%	407	8.1%	420	7.4%
65 - 69	182	4.0%	350	6.9%	441	7.8%
70 - 74	162	3.6%	292	5.8%	368	6.5%
75 - 79	125	2.8%	163	3.2%	303	5.4%
80 - 84	101	2.2%	146	2.9%	168	3.0%
85+	98	2.2%	164	3.3%	211	3.7%
18+	3,450	76.4%	3,942	78.2%	4,457	78.9%

Source: U.S. Census Bureau, Census 2010 Summary File 1. Esri forecasts for 2020 and 2025.

July 15, 2020

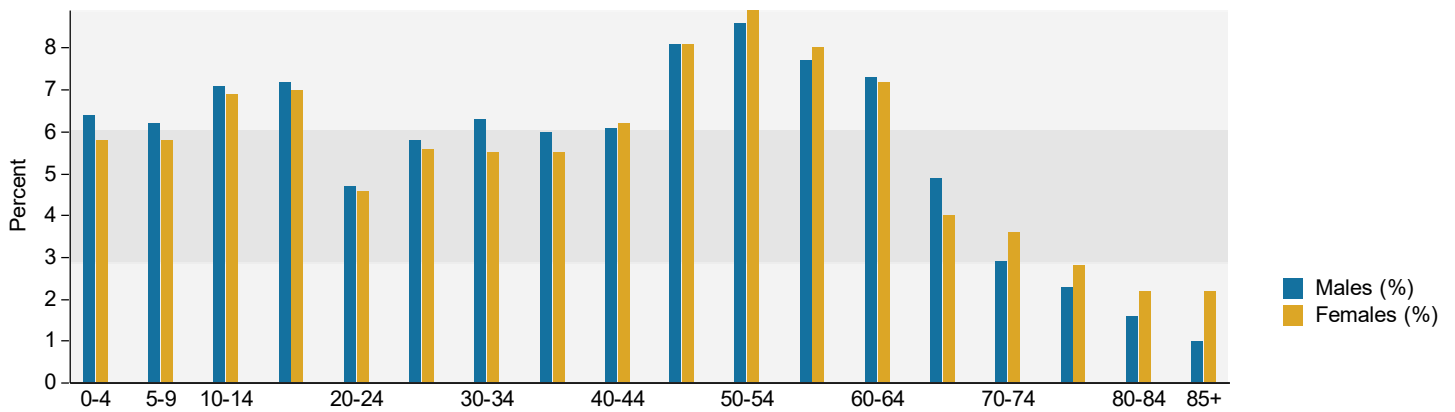


Age by Sex Profile

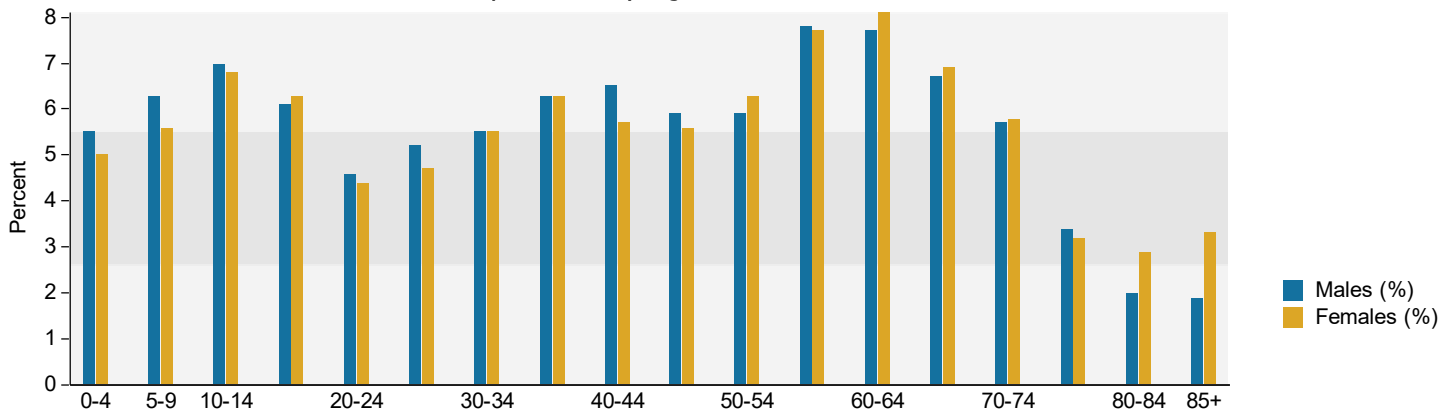
Shoppes at Forest Green
10023 Forest Green Blvd, Louisville, Kentucky, 40223
Ring: 1 mile radius

Prepared by Charlotte Hollkamp
Latitude: 38.26339
Longitude: -85.57101

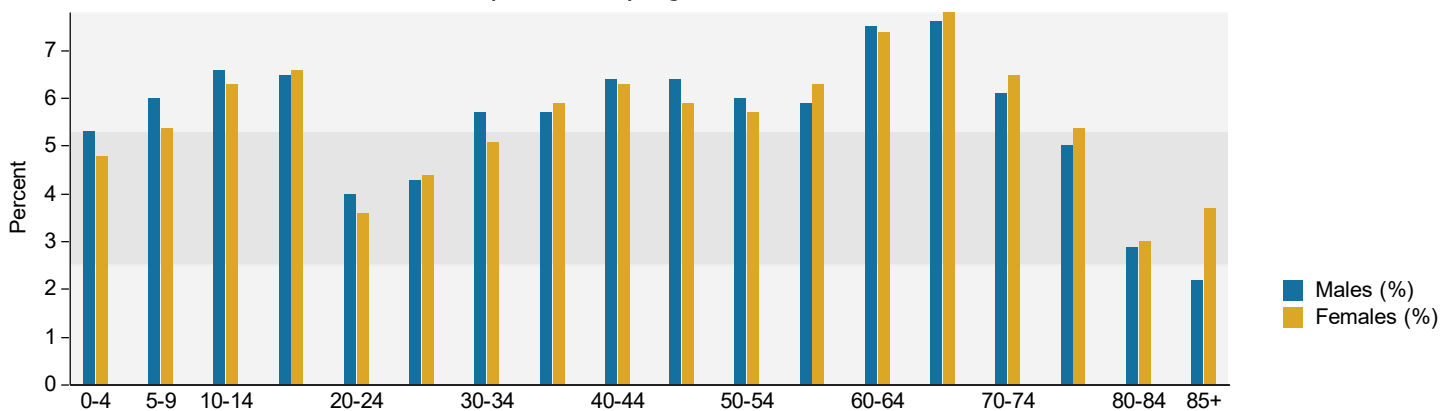
Census 2010 Population by Age and Sex



2020 Population by Age and Sex



2025 Population by Age and Sex



Source: U.S. Census Bureau, Census 2010 Summary File 1. Esri forecasts for 2020 and 2025.



Age by Sex Profile

Shoppes at Forest Green
10023 Forest Green Blvd, Louisville, Kentucky, 40223
Ring: 3 mile radius

Prepared by Charlotte Hollkamp
Latitude: 38.26339
Longitude: -85.57101

Summary	Census 2010	2020	2025	2020-2025 Change	2020-2025 Annual Rate
Population	69,844	73,478	77,887	4,409	1.17%
Households	30,853	32,404	34,337	1,933	1.17%
Average Household Size	2.23	2.23	2.23	0.00	0.00%
Median Age	41.4	43.2	43.9	0.7	0.32%
Median Male Age	39.0	40.9	41.8	0.9	0.44%
Median Female Age	43.7	45.5	46.0	0.5	0.22%

Total Population by Age	Census 2010		2020		2025	
	Number	Percent	Number	Percent	Number	Percent
Total	69,844	100.0%	73,479	100.0%	77,887	100.0%
0 - 4	3,958	5.7%	3,714	5.1%	3,895	5.0%
5 - 9	3,986	5.7%	3,889	5.3%	4,037	5.2%
10 - 14	4,225	6.0%	4,288	5.8%	4,292	5.5%
15 - 19	3,955	5.7%	4,088	5.6%	4,208	5.4%
20 - 24	3,892	5.6%	4,063	5.5%	4,185	5.4%
25 - 29	5,103	7.3%	4,653	6.3%	4,951	6.4%
30 - 34	4,401	6.3%	4,462	6.1%	4,812	6.2%
35 - 39	4,182	6.0%	4,803	6.5%	4,714	6.1%
40 - 44	4,324	6.2%	4,365	5.9%	4,984	6.4%
45 - 49	4,824	6.9%	4,357	5.9%	4,558	5.9%
50 - 54	5,033	7.2%	4,481	6.1%	4,498	5.8%
55 - 59	4,731	6.8%	4,901	6.7%	4,586	5.9%
60 - 64	4,635	6.6%	4,969	6.8%	4,995	6.4%
65 - 69	3,466	5.0%	4,525	6.2%	5,103	6.6%
70 - 74	2,553	3.7%	4,061	5.5%	4,407	5.7%
75 - 79	2,260	3.2%	2,900	3.9%	3,925	5.0%
80 - 84	2,097	3.0%	2,137	2.9%	2,677	3.4%
85+	2,219	3.2%	2,823	3.8%	3,060	3.9%
18+	55,019	78.8%	58,996	80.3%	62,975	80.9%
21+	53,144	76.1%	56,793	77.3%	60,732	78.0%

Total Population by Age Dependency	Census 2010		2020		2025	
	Number	Percent	Number	Percent	Number	Percent
Total	69,844	100.0%	73,479	100.0%	77,887	100.0%
Child (<18)	14,826	21.2%	14,482	19.7%	14,912	19.1%
Working-Age (18-64)	42,422	60.7%	42,550	57.9%	43,803	56.2%
Senior (Age 65+)	12,595	18.0%	16,447	22.4%	19,173	24.6%
Child Dependency Ratio	34.9	-	34.0	-	34.0	-
Age Dependency Ratio	64.6	-	72.7	-	77.8	-
Senior Dependency Ratio	29.7	-	38.7	-	43.8	-

Data Note: Detail may not sum to totals due to rounding. Dependency ratios represent the number of dependents per 100 persons of the working-age population aged 18 to 64.

Source: U.S. Census Bureau, Census 2010 Summary File 1. Esri forecasts for 2020 and 2025.

July 15, 2020



Age by Sex Profile

Shoppes at Forest Green
10023 Forest Green Blvd, Louisville, Kentucky, 40223
Ring: 3 mile radius

Prepared by Charlotte Hollkamp
Latitude: 38.26339
Longitude: -85.57101

Male Population by Age	Census 2010		2020		2025	
	Number	Percent	Number	Percent	Number	Percent
Total	33,056	100.0%	35,137	100.0%	37,323	100.0%
0 - 4	2,035	6.2%	1,902	5.4%	2,001	5.4%
5 - 9	2,020	6.1%	2,033	5.8%	2,103	5.6%
10 - 14	2,183	6.6%	2,233	6.4%	2,224	6.0%
15 - 19	2,013	6.1%	2,044	5.8%	2,190	5.9%
20 - 24	1,845	5.6%	2,086	5.9%	2,028	5.4%
25 - 29	2,508	7.6%	2,317	6.6%	2,530	6.8%
30 - 34	2,266	6.9%	2,190	6.2%	2,448	6.6%
35 - 39	2,084	6.3%	2,372	6.8%	2,265	6.1%
40 - 44	2,117	6.4%	2,200	6.3%	2,475	6.6%
45 - 49	2,265	6.9%	2,136	6.1%	2,271	6.1%
50 - 54	2,340	7.1%	2,151	6.1%	2,169	5.8%
55 - 59	2,163	6.5%	2,315	6.6%	2,187	5.9%
60 - 64	2,147	6.5%	2,274	6.5%	2,335	6.3%
65 - 69	1,549	4.7%	2,002	5.7%	2,297	6.2%
70 - 74	1,117	3.4%	1,828	5.2%	1,959	5.2%
75 - 79	941	2.8%	1,236	3.5%	1,690	4.5%
80 - 84	781	2.4%	864	2.5%	1,086	2.9%
85+	682	2.1%	954	2.7%	1,068	2.9%
18+	25,459	77.0%	27,669	78.7%	29,590	79.3%

Female Population by Age	Census 2010		2020		2025	
	Number	Percent	Number	Percent	Number	Percent
Total	36,788	100.0%	38,342	100.0%	40,564	100.0%
0 - 4	1,923	5.2%	1,812	4.7%	1,894	4.7%
5 - 9	1,967	5.3%	1,856	4.8%	1,934	4.8%
10 - 14	2,042	5.6%	2,054	5.4%	2,068	5.1%
15 - 19	1,942	5.3%	2,043	5.3%	2,018	5.0%
20 - 24	2,046	5.6%	1,977	5.2%	2,157	5.3%
25 - 29	2,595	7.1%	2,336	6.1%	2,421	6.0%
30 - 34	2,135	5.8%	2,271	5.9%	2,364	5.8%
35 - 39	2,097	5.7%	2,431	6.3%	2,449	6.0%
40 - 44	2,207	6.0%	2,165	5.6%	2,510	6.2%
45 - 49	2,559	7.0%	2,220	5.8%	2,287	5.6%
50 - 54	2,694	7.3%	2,331	6.1%	2,329	5.7%
55 - 59	2,568	7.0%	2,586	6.7%	2,400	5.9%
60 - 64	2,488	6.8%	2,695	7.0%	2,660	6.6%
65 - 69	1,917	5.2%	2,523	6.6%	2,806	6.9%
70 - 74	1,436	3.9%	2,233	5.8%	2,448	6.0%
75 - 79	1,319	3.6%	1,665	4.3%	2,236	5.5%
80 - 84	1,316	3.6%	1,273	3.3%	1,591	3.9%
85+	1,537	4.2%	1,870	4.9%	1,993	4.9%
18+	29,559	80.3%	31,328	81.7%	33,385	82.3%

Source: U.S. Census Bureau, Census 2010 Summary File 1. Esri forecasts for 2020 and 2025.

July 15, 2020

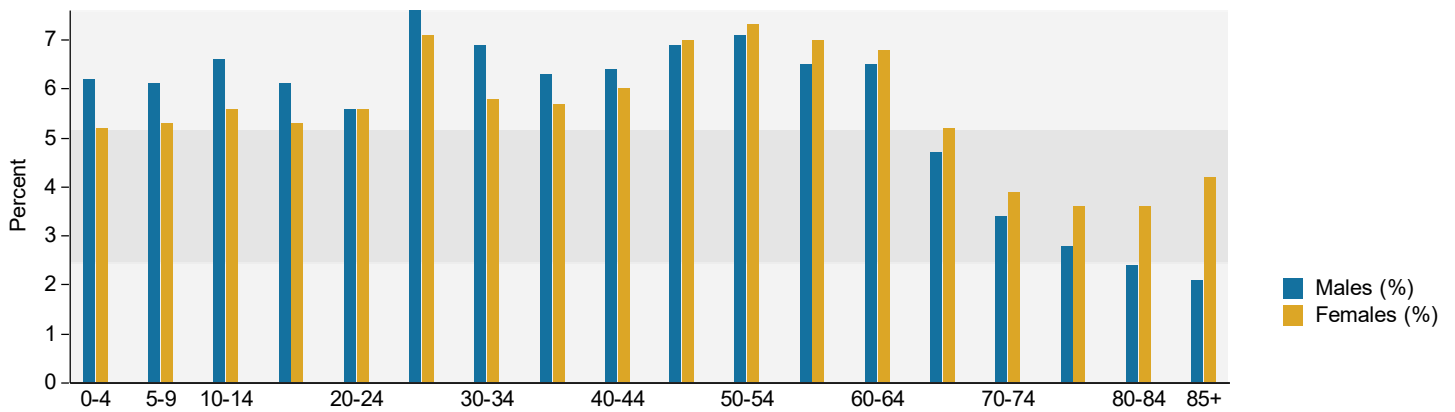


Age by Sex Profile

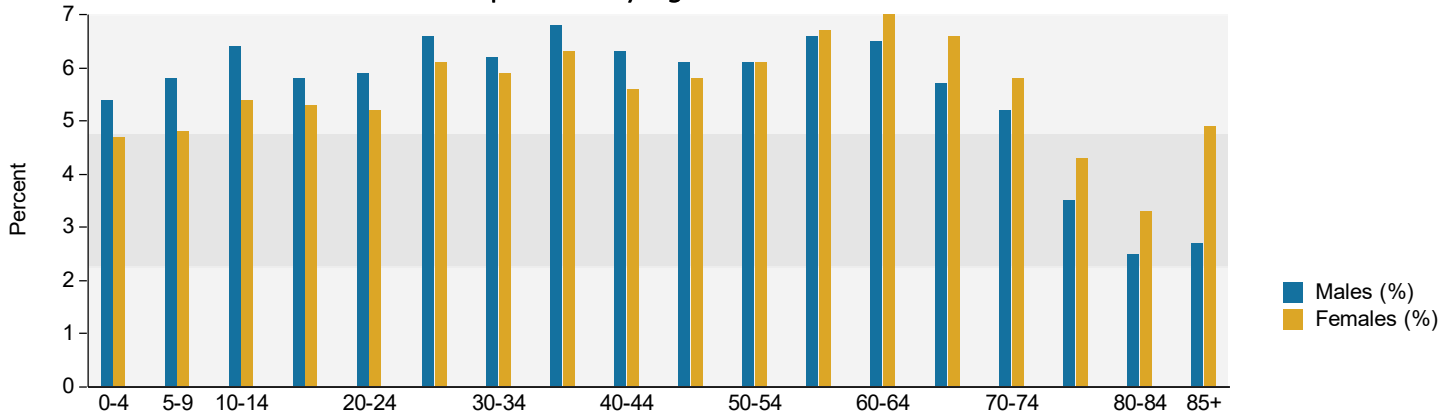
Shoppes at Forest Green
10023 Forest Green Blvd, Louisville, Kentucky, 40223
Ring: 3 mile radius

Prepared by Charlotte Hollkamp
Latitude: 38.26339
Longitude: -85.57101

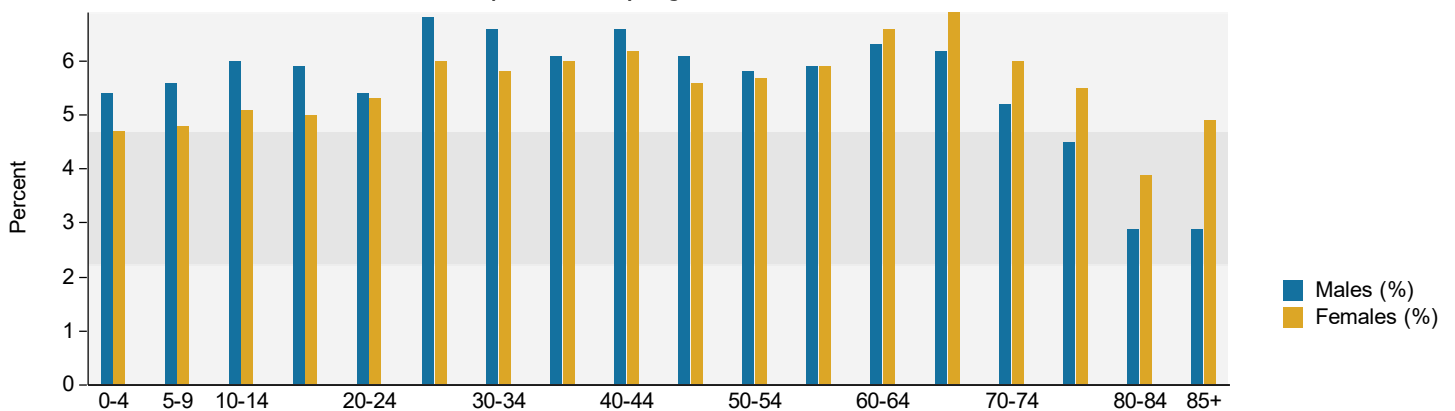
Census 2010 Population by Age and Sex



2020 Population by Age and Sex



2025 Population by Age and Sex



Source: U.S. Census Bureau, Census 2010 Summary File 1. Esri forecasts for 2020 and 2025.



Age by Sex Profile

Shoppes at Forest Green
10023 Forest Green Blvd, Louisville, Kentucky, 40223
Ring: 5 mile radius

Prepared by Charlotte Hollkamp
Latitude: 38.26339
Longitude: -85.57101

Summary	Census 2010	2020	2025	2020-2025 Change	2020-2025 Annual Rate
Population	176,146	188,705	197,618	8,913	0.93%
Households	76,136	81,251	85,112	3,861	0.93%
Average Household Size	2.28	2.29	2.29	0.00	0.00%
Median Age	40.4	42.2	43.0	0.8	0.38%
Median Male Age	38.4	40.3	41.2	0.9	0.44%
Median Female Age	42.4	44.2	44.8	0.6	0.27%

Total Population by Age	Census 2010		2020		2025	
	Number	Percent	Number	Percent	Number	Percent
Total	176,150	100.0%	188,704	100.0%	197,618	100.0%
0 - 4	10,529	6.0%	10,016	5.3%	10,370	5.2%
5 - 9	10,890	6.2%	10,835	5.7%	11,073	5.6%
10 - 14	10,974	6.2%	11,507	6.1%	11,479	5.8%
15 - 19	9,986	5.7%	10,553	5.6%	10,755	5.4%
20 - 24	9,262	5.3%	9,808	5.2%	10,102	5.1%
25 - 29	12,538	7.1%	11,705	6.2%	11,844	6.0%
30 - 34	11,569	6.6%	11,590	6.1%	12,664	6.4%
35 - 39	11,323	6.4%	13,008	6.9%	12,394	6.3%
40 - 44	11,498	6.5%	11,914	6.3%	13,361	6.8%
45 - 49	12,714	7.2%	11,740	6.2%	12,220	6.2%
50 - 54	13,017	7.4%	11,697	6.2%	11,827	6.0%
55 - 59	12,207	6.9%	12,894	6.8%	11,757	5.9%
60 - 64	11,274	6.4%	12,655	6.7%	12,776	6.5%
65 - 69	7,940	4.5%	11,466	6.1%	12,469	6.3%
70 - 74	5,811	3.3%	9,792	5.2%	10,941	5.5%
75 - 79	5,143	2.9%	6,632	3.5%	9,112	4.6%
80 - 84	4,777	2.7%	4,802	2.5%	5,962	3.0%
85+	4,692	2.7%	6,090	3.2%	6,512	3.3%
18+	137,122	77.8%	149,695	79.3%	157,903	79.9%
21+	132,319	75.1%	143,970	76.3%	152,063	76.9%

Total Population by Age Dependency	Census 2010		2020		2025	
	Number	Percent	Number	Percent	Number	Percent
Total	176,150	100.0%	188,704	100.0%	197,618	100.0%
Child (<18)	39,025	22.2%	39,010	20.7%	39,716	20.1%
Working-Age (18-64)	108,760	61.7%	110,913	58.8%	112,907	57.1%
Senior (Age 65+)	28,365	16.1%	38,782	20.6%	44,995	22.8%
Child Dependency Ratio	35.9	-	35.2	-	35.2	-
Age Dependency Ratio	62.0	-	70.1	-	75.0	-
Senior Dependency Ratio	26.1	-	35.0	-	39.9	-

Data Note: Detail may not sum to totals due to rounding. Dependency ratios represent the number of dependents per 100 persons of the working-age population aged 18 to 64.

Source: U.S. Census Bureau, Census 2010 Summary File 1. Esri forecasts for 2020 and 2025.

July 15, 2020



Age by Sex Profile

Shoppes at Forest Green
10023 Forest Green Blvd, Louisville, Kentucky, 40223
Ring: 5 mile radius

Prepared by Charlotte Hollkamp
Latitude: 38.26339
Longitude: -85.57101

Male Population by Age	Census 2010		2020		2025	
	Number	Percent	Number	Percent	Number	Percent
Total	83,784	100.0%	90,546	100.0%	95,040	100.0%
0 - 4	5,407	6.5%	5,124	5.7%	5,318	5.6%
5 - 9	5,515	6.6%	5,598	6.2%	5,698	6.0%
10 - 14	5,572	6.7%	5,918	6.5%	5,881	6.2%
15 - 19	5,104	6.1%	5,305	5.9%	5,565	5.9%
20 - 24	4,479	5.3%	4,935	5.5%	4,909	5.2%
25 - 29	6,248	7.5%	5,878	6.5%	6,023	6.3%
30 - 34	5,832	7.0%	5,770	6.4%	6,388	6.7%
35 - 39	5,565	6.6%	6,445	7.1%	6,103	6.4%
40 - 44	5,620	6.7%	5,907	6.5%	6,603	6.9%
45 - 49	6,058	7.2%	5,745	6.3%	6,042	6.4%
50 - 54	6,086	7.3%	5,673	6.3%	5,723	6.0%
55 - 59	5,579	6.7%	6,063	6.7%	5,645	5.9%
60 - 64	5,268	6.3%	5,810	6.4%	5,985	6.3%
65 - 69	3,580	4.3%	5,126	5.7%	5,663	6.0%
70 - 74	2,534	3.0%	4,446	4.9%	4,840	5.1%
75 - 79	2,141	2.6%	2,831	3.1%	3,991	4.2%
80 - 84	1,775	2.1%	1,932	2.1%	2,418	2.5%
85+	1,421	1.7%	2,040	2.3%	2,245	2.4%
18+	63,886	76.3%	70,566	77.9%	74,628	78.5%

Female Population by Age	Census 2010		2020		2025	
	Number	Percent	Number	Percent	Number	Percent
Total	92,366	100.0%	98,160	100.0%	102,578	100.0%
0 - 4	5,123	5.5%	4,893	5.0%	5,052	4.9%
5 - 9	5,375	5.8%	5,237	5.3%	5,375	5.2%
10 - 14	5,402	5.8%	5,589	5.7%	5,598	5.5%
15 - 19	4,883	5.3%	5,248	5.3%	5,190	5.1%
20 - 24	4,783	5.2%	4,874	5.0%	5,192	5.1%
25 - 29	6,290	6.8%	5,827	5.9%	5,821	5.7%
30 - 34	5,737	6.2%	5,820	5.9%	6,276	6.1%
35 - 39	5,758	6.2%	6,563	6.7%	6,291	6.1%
40 - 44	5,878	6.4%	6,007	6.1%	6,759	6.6%
45 - 49	6,656	7.2%	5,995	6.1%	6,179	6.0%
50 - 54	6,932	7.5%	6,024	6.1%	6,104	6.0%
55 - 59	6,629	7.2%	6,832	7.0%	6,112	6.0%
60 - 64	6,006	6.5%	6,845	7.0%	6,791	6.6%
65 - 69	4,361	4.7%	6,340	6.5%	6,806	6.6%
70 - 74	3,277	3.5%	5,347	5.4%	6,101	5.9%
75 - 79	3,003	3.3%	3,801	3.9%	5,121	5.0%
80 - 84	3,002	3.3%	2,869	2.9%	3,544	3.5%
85+	3,271	3.5%	4,051	4.1%	4,267	4.2%
18+	73,235	79.3%	79,129	80.6%	83,275	81.2%

Source: U.S. Census Bureau, Census 2010 Summary File 1. Esri forecasts for 2020 and 2025.

July 15, 2020

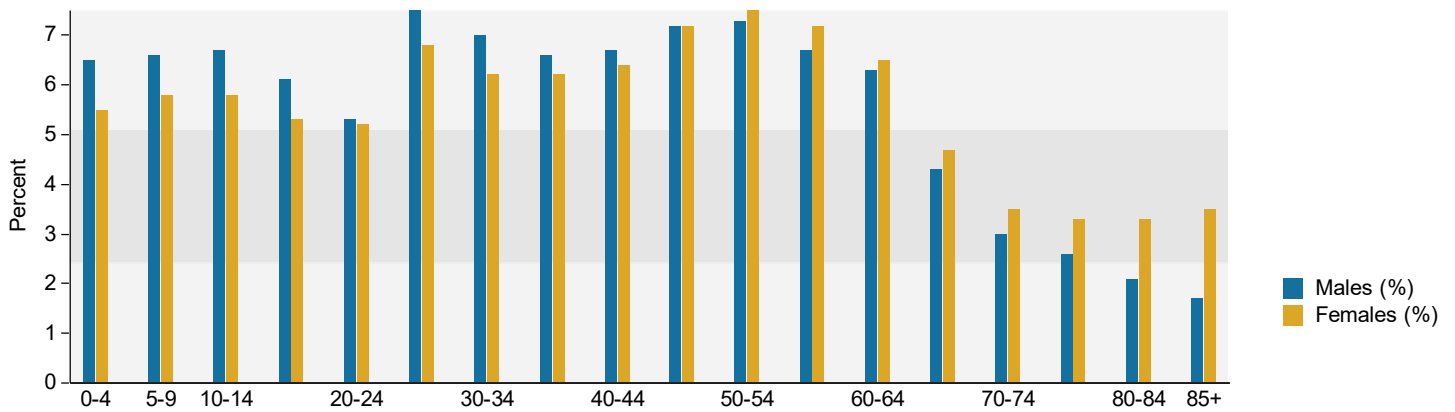


Age by Sex Profile

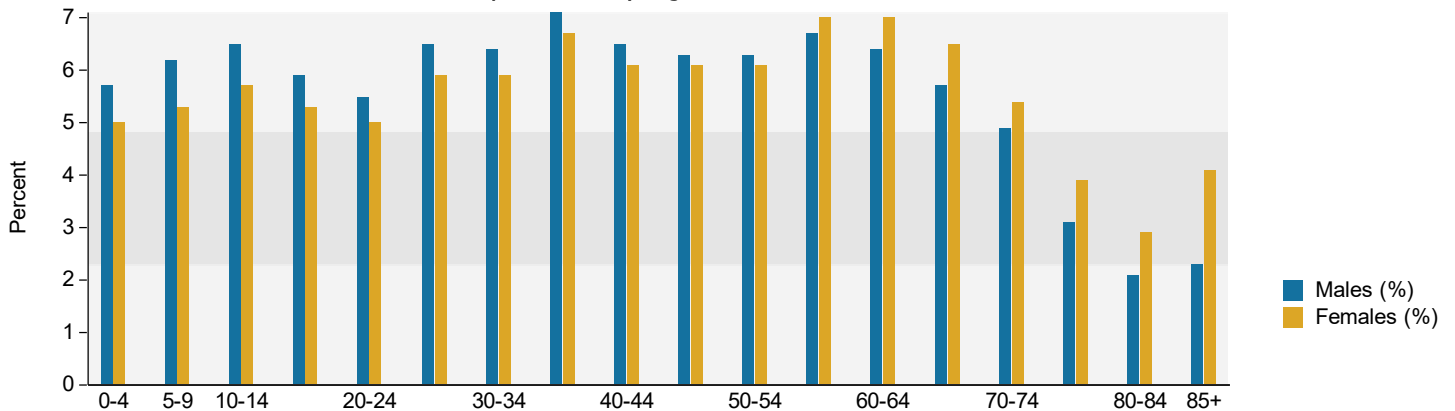
Shoppes at Forest Green
10023 Forest Green Blvd, Louisville, Kentucky, 40223
Ring: 5 mile radius

Prepared by Charlotte Hollkamp
Latitude: 38.26339
Longitude: -85.57101

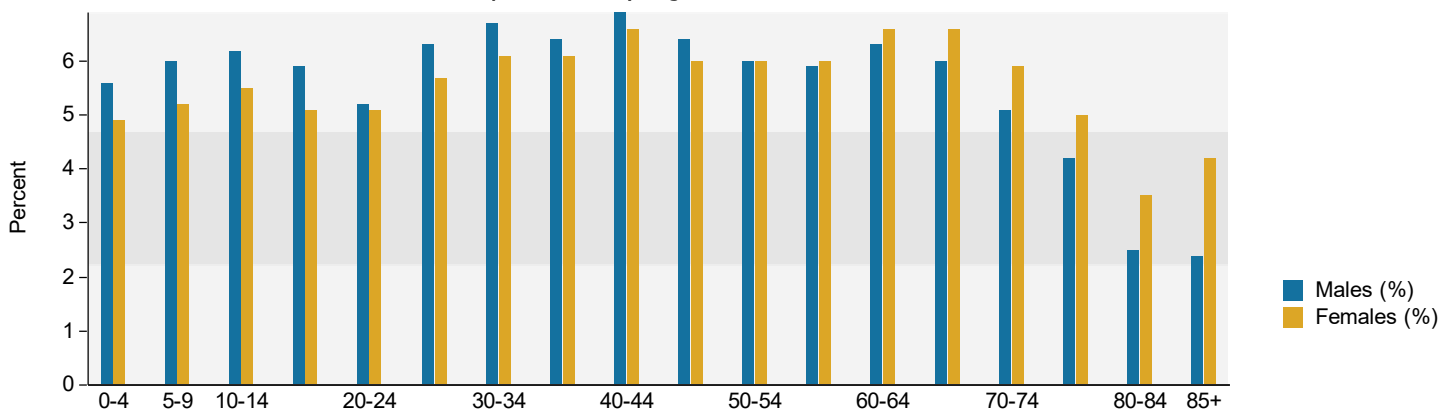
Census 2010 Population by Age and Sex



2020 Population by Age and Sex



2025 Population by Age and Sex



Source: U.S. Census Bureau, Census 2010 Summary File 1. Esri forecasts for 2020 and 2025.

July 15, 2020