



## Age by Sex Profile

4208 Bishop Lane, Louisville, KY, 40218  
Oriental Garden  
Ring: 1 mile radius

Prepared by Charlotte Hollkamp  
Latitude: 38.20047  
Longitude: -85.68667

Summary	Census 2010	2020	2025	2020-2025 Change	2020-2025 Annual Rate
Population	9,514	9,538	9,518	-20	-0.04%
Households	4,493	4,466	4,450	-16	-0.07%
Average Household Size	2.09	2.10	2.10	0.00	0.00%
Median Age	40.5	42.0	43.2	1.2	0.57%
Median Male Age	38.4	39.8	41.0	1.2	0.60%
Median Female Age	42.6	44.1	45.0	0.9	0.40%

Total Population by Age	Census 2010		2020		2025	
	Number	Percent	Number	Percent	Number	Percent
Total	9,514	100.0%	9,539	100.0%	9,519	100.0%
0 - 4	582	6.1%	512	5.4%	515	5.4%
5 - 9	517	5.4%	500	5.2%	499	5.2%
10 - 14	561	5.9%	563	5.9%	518	5.4%
15 - 19	553	5.8%	510	5.3%	518	5.4%
20 - 24	694	7.3%	609	6.4%	574	6.0%
25 - 29	725	7.6%	611	6.4%	620	6.5%
30 - 34	553	5.8%	644	6.8%	548	5.8%
35 - 39	512	5.4%	626	6.6%	590	6.2%
40 - 44	549	5.8%	492	5.2%	599	6.3%
45 - 49	736	7.7%	479	5.0%	485	5.1%
50 - 54	737	7.7%	567	5.9%	467	4.9%
55 - 59	714	7.5%	722	7.6%	548	5.8%
60 - 64	584	6.1%	689	7.2%	693	7.3%
65 - 69	351	3.7%	656	6.9%	654	6.9%
70 - 74	319	3.4%	494	5.2%	623	6.5%
75 - 79	276	2.9%	295	3.1%	460	4.8%
80 - 84	309	3.2%	238	2.5%	261	2.7%
85+	240	2.5%	332	3.5%	347	3.6%
18+	7,529	79.1%	7,665	80.4%	7,685	80.7%
21+	7,164	75.3%	7,344	77.0%	7,364	77.4%

Total Population by Age Dependency	Census 2010		2020		2025	
	Number	Percent	Number	Percent	Number	Percent
Total	9,514	100.0%	9,539	100.0%	9,519	100.0%
Child (<18)	1,988	20.9%	1,874	19.6%	1,834	19.3%
Working-Age (18-64)	6,031	63.4%	5,650	59.2%	5,339	56.1%
Senior (Age 65+)	1,496	15.7%	2,014	21.1%	2,345	24.6%
Child Dependency Ratio	33.0	-	33.2	-	34.4	-
Age Dependency Ratio	57.8	-	68.8	-	78.3	-
Senior Dependency Ratio	24.8	-	35.6	-	43.9	-

**Data Note:** Detail may not sum to totals due to rounding. Dependency ratios represent the number of dependents per 100 persons of the working-age population aged 18 to 64.

**Source:** U.S. Census Bureau, Census 2010 Summary File 1. Esri forecasts for 2020 and 2025.

July 27, 2020



## Age by Sex Profile

4208 Bishop Lane, Louisville, KY, 40218  
Oriental Garden  
Ring: 1 mile radius

Prepared by Charlotte Hollkamp  
Latitude: 38.20047  
Longitude: -85.68667

Male Population by Age	Census 2010		2020		2025	
	Number	Percent	Number	Percent	Number	Percent
Total	4,530	100.0%	4,557	100.0%	4,532	100.0%
0 - 4	293	6.5%	257	5.6%	259	5.7%
5 - 9	242	5.3%	253	5.6%	251	5.5%
10 - 14	318	7.0%	306	6.7%	286	6.3%
15 - 19	286	6.3%	251	5.5%	272	6.0%
20 - 24	327	7.2%	318	7.0%	257	5.7%
25 - 29	341	7.5%	292	6.4%	328	7.2%
30 - 34	275	6.1%	316	6.9%	265	5.8%
35 - 39	271	6.0%	295	6.5%	291	6.4%
40 - 44	270	6.0%	242	5.3%	279	6.2%
45 - 49	337	7.4%	252	5.5%	238	5.3%
50 - 54	372	8.2%	274	6.0%	242	5.3%
55 - 59	343	7.6%	319	7.0%	261	5.8%
60 - 64	272	6.0%	336	7.4%	300	6.6%
65 - 69	154	3.4%	308	6.8%	312	6.9%
70 - 74	115	2.5%	215	4.7%	279	6.2%
75 - 79	102	2.3%	124	2.7%	192	4.2%
80 - 84	128	2.8%	82	1.8%	104	2.3%
85+	84	1.9%	117	2.6%	116	2.6%
18+	3,504	77.4%	3,590	78.8%	3,569	78.8%

Female Population by Age	Census 2010		2020		2025	
	Number	Percent	Number	Percent	Number	Percent
Total	4,984	100.0%	4,981	100.0%	4,986	100.0%
0 - 4	290	5.8%	256	5.1%	255	5.1%
5 - 9	276	5.5%	247	5.0%	247	5.0%
10 - 14	243	4.9%	257	5.2%	232	4.7%
15 - 19	266	5.3%	259	5.2%	246	4.9%
20 - 24	367	7.4%	291	5.8%	317	6.4%
25 - 29	384	7.7%	319	6.4%	292	5.9%
30 - 34	278	5.6%	328	6.6%	284	5.7%
35 - 39	241	4.8%	331	6.6%	299	6.0%
40 - 44	279	5.6%	250	5.0%	320	6.4%
45 - 49	399	8.0%	227	4.6%	247	5.0%
50 - 54	365	7.3%	293	5.9%	226	4.5%
55 - 59	371	7.4%	403	8.1%	287	5.8%
60 - 64	312	6.3%	353	7.1%	393	7.9%
65 - 69	197	4.0%	348	7.0%	342	6.9%
70 - 74	204	4.1%	279	5.6%	343	6.9%
75 - 79	174	3.5%	171	3.4%	269	5.4%
80 - 84	181	3.6%	156	3.1%	157	3.1%
85+	157	3.2%	214	4.3%	231	4.6%
18+	4,025	80.8%	4,074	81.8%	4,115	82.5%

Source: U.S. Census Bureau, Census 2010 Summary File 1. Esri forecasts for 2020 and 2025.

July 27, 2020

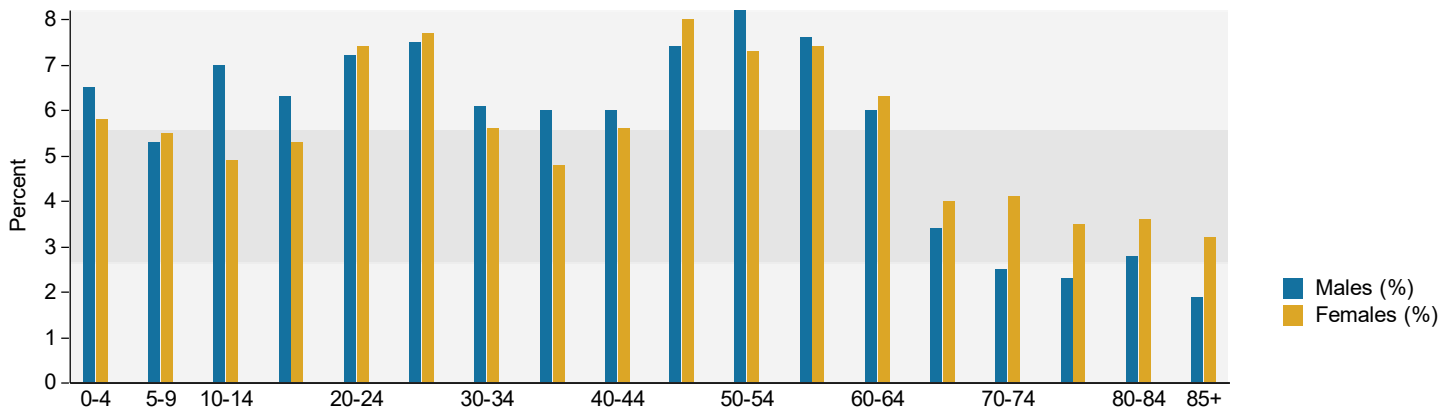


# Age by Sex Profile

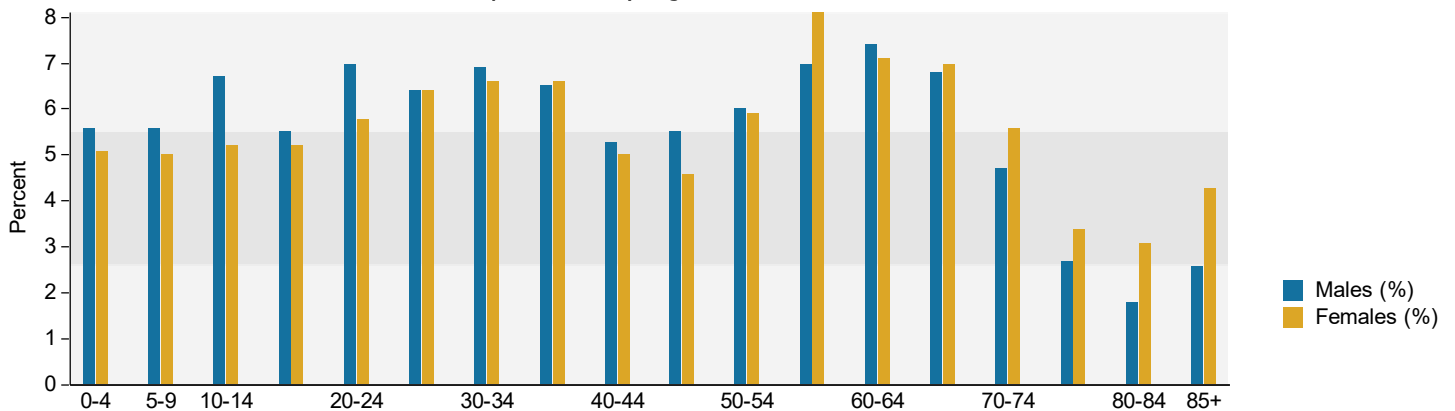
4208 Bishop Lane, Louisville, KY, 40218  
Oriental Garden  
Ring: 1 mile radius

Prepared by Charlotte Hollkamp  
Latitude: 38.20047  
Longitude: -85.68667

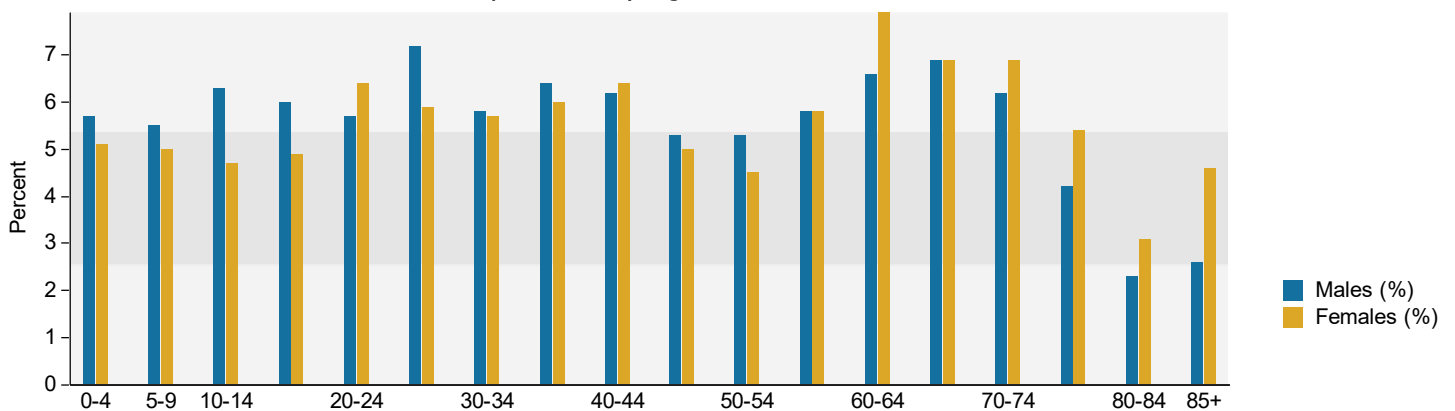
Census 2010 Population by Age and Sex



2020 Population by Age and Sex



2025 Population by Age and Sex



Source: U.S. Census Bureau, Census 2010 Summary File 1. Esri forecasts for 2020 and 2025.

July 27, 2020



## Age by Sex Profile

4208 Bishop Lane, Louisville, KY, 40218  
Oriental Garden  
Ring: 3 mile radius

Prepared by Charlotte Hollkamp  
Latitude: 38.20047  
Longitude: -85.68667

Summary	Census 2010	2020	2025	2020-2025 Change	2020-2025 Annual Rate
Population	92,212	93,293	93,455	162	0.03%
Households	40,366	40,511	40,515	4	0.00%
Average Household Size	2.23	2.23	2.24	0.01	0.09%
Median Age	37.5	39.4	40.6	1.2	0.60%
Median Male Age	35.5	37.8	38.9	1.1	0.58%
Median Female Age	39.6	41.3	42.4	1.1	0.53%

Total Population by Age	Census 2010		2020		2025	
	Number	Percent	Number	Percent	Number	Percent
Total	92,214	100.0%	93,293	100.0%	93,455	100.0%
0 - 4	5,878	6.4%	5,289	5.7%	5,276	5.6%
5 - 9	5,253	5.7%	5,225	5.6%	5,177	5.5%
10 - 14	5,299	5.7%	5,343	5.7%	5,157	5.5%
15 - 19	5,809	6.3%	5,435	5.8%	5,617	6.0%
20 - 24	6,873	7.5%	6,179	6.6%	5,915	6.3%
25 - 29	7,576	8.2%	6,556	7.0%	6,433	6.9%
30 - 34	6,597	7.2%	6,743	7.2%	6,182	6.6%
35 - 39	5,643	6.1%	6,627	7.1%	6,153	6.6%
40 - 44	5,499	6.0%	5,733	6.1%	6,341	6.8%
45 - 49	6,695	7.3%	5,287	5.7%	5,660	6.1%
50 - 54	6,853	7.4%	5,474	5.9%	5,118	5.5%
55 - 59	6,370	6.9%	6,371	6.8%	5,265	5.6%
60 - 64	5,163	5.6%	6,246	6.7%	5,992	6.4%
65 - 69	3,278	3.6%	5,434	5.8%	5,733	6.1%
70 - 74	2,659	2.9%	4,129	4.4%	4,930	5.3%
75 - 79	2,315	2.5%	2,656	2.8%	3,701	4.0%
80 - 84	2,174	2.4%	1,951	2.1%	2,219	2.4%
85+	2,279	2.5%	2,615	2.8%	2,586	2.8%
18+	72,552	78.7%	74,459	79.8%	74,740	80.0%
21+	68,609	74.4%	70,700	75.8%	70,948	75.9%

Total Population by Age Dependency	Census 2010		2020		2025	
	Number	Percent	Number	Percent	Number	Percent
Total	92,214	100.0%	93,293	100.0%	93,455	100.0%
Child (<18)	19,660	21.3%	18,834	20.2%	18,715	20.0%
Working-Age (18-64)	59,846	64.9%	57,674	61.8%	55,571	59.5%
Senior (Age 65+)	12,706	13.8%	16,785	18.0%	19,169	20.5%
Child Dependency Ratio	32.9	-	32.7	-	33.7	-
Age Dependency Ratio	54.1	-	61.8	-	68.2	-
Senior Dependency Ratio	21.2	-	29.1	-	34.5	-

**Data Note:** Detail may not sum to totals due to rounding. Dependency ratios represent the number of dependents per 100 persons of the working-age population aged 18 to 64.

**Source:** U.S. Census Bureau, Census 2010 Summary File 1. Esri forecasts for 2020 and 2025.

July 27, 2020



## Age by Sex Profile

4208 Bishop Lane, Louisville, KY, 40218  
Oriental Garden  
Ring: 3 mile radius

Prepared by Charlotte Hollkamp  
Latitude: 38.20047  
Longitude: -85.68667

Male Population by Age	Census 2010		2020		2025	
	Number	Percent	Number	Percent	Number	Percent
Total	44,342	100.0%	45,164	100.0%	45,294	100.0%
0 - 4	3,071	6.9%	2,750	6.1%	2,743	6.1%
5 - 9	2,648	6.0%	2,715	6.0%	2,689	5.9%
10 - 14	2,779	6.3%	2,855	6.3%	2,730	6.0%
15 - 19	2,936	6.6%	2,673	5.9%	2,918	6.4%
20 - 24	3,355	7.6%	3,039	6.7%	2,781	6.1%
25 - 29	3,726	8.4%	3,255	7.2%	3,189	7.0%
30 - 34	3,400	7.7%	3,434	7.6%	3,178	7.0%
35 - 39	2,840	6.4%	3,339	7.4%	3,108	6.9%
40 - 44	2,759	6.2%	2,906	6.4%	3,177	7.0%
45 - 49	3,208	7.2%	2,619	5.8%	2,816	6.2%
50 - 54	3,293	7.4%	2,678	5.9%	2,519	5.6%
55 - 59	3,017	6.8%	2,996	6.6%	2,562	5.7%
60 - 64	2,413	5.4%	2,930	6.5%	2,782	6.1%
65 - 69	1,449	3.3%	2,490	5.5%	2,635	5.8%
70 - 74	1,091	2.5%	1,848	4.1%	2,218	4.9%
75 - 79	889	2.0%	1,072	2.4%	1,566	3.5%
80 - 84	805	1.8%	751	1.7%	864	1.9%
85+	663	1.5%	813	1.8%	820	1.8%
18+	34,201	77.1%	35,347	78.3%	35,469	78.3%

Female Population by Age	Census 2010		2020		2025	
	Number	Percent	Number	Percent	Number	Percent
Total	47,872	100.0%	48,129	100.0%	48,161	100.0%
0 - 4	2,807	5.9%	2,539	5.3%	2,533	5.3%
5 - 9	2,605	5.4%	2,510	5.2%	2,487	5.2%
10 - 14	2,520	5.3%	2,488	5.2%	2,427	5.0%
15 - 19	2,873	6.0%	2,762	5.7%	2,699	5.6%
20 - 24	3,519	7.4%	3,140	6.5%	3,134	6.5%
25 - 29	3,850	8.0%	3,301	6.9%	3,245	6.7%
30 - 34	3,198	6.7%	3,308	6.9%	3,004	6.2%
35 - 39	2,802	5.9%	3,287	6.8%	3,045	6.3%
40 - 44	2,740	5.7%	2,826	5.9%	3,165	6.6%
45 - 49	3,487	7.3%	2,669	5.5%	2,843	5.9%
50 - 54	3,560	7.4%	2,796	5.8%	2,599	5.4%
55 - 59	3,352	7.0%	3,375	7.0%	2,703	5.6%
60 - 64	2,750	5.7%	3,316	6.9%	3,210	6.7%
65 - 69	1,828	3.8%	2,944	6.1%	3,098	6.4%
70 - 74	1,569	3.3%	2,281	4.7%	2,713	5.6%
75 - 79	1,427	3.0%	1,584	3.3%	2,134	4.4%
80 - 84	1,369	2.9%	1,200	2.5%	1,356	2.8%
85+	1,616	3.4%	1,802	3.7%	1,766	3.7%
18+	38,350	80.1%	39,112	81.3%	39,271	81.5%

Source: U.S. Census Bureau, Census 2010 Summary File 1. Esri forecasts for 2020 and 2025.

July 27, 2020

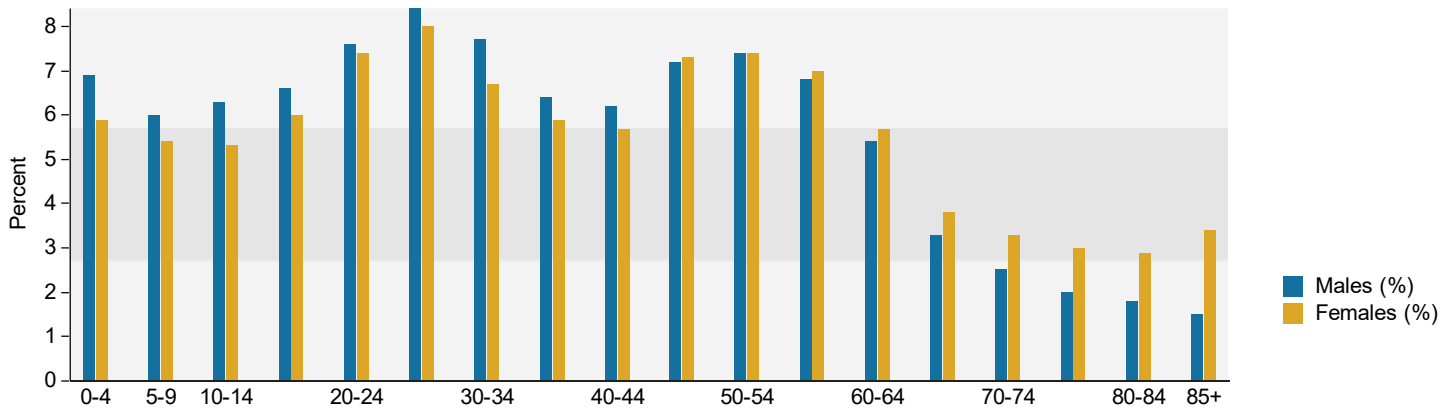


## Age by Sex Profile

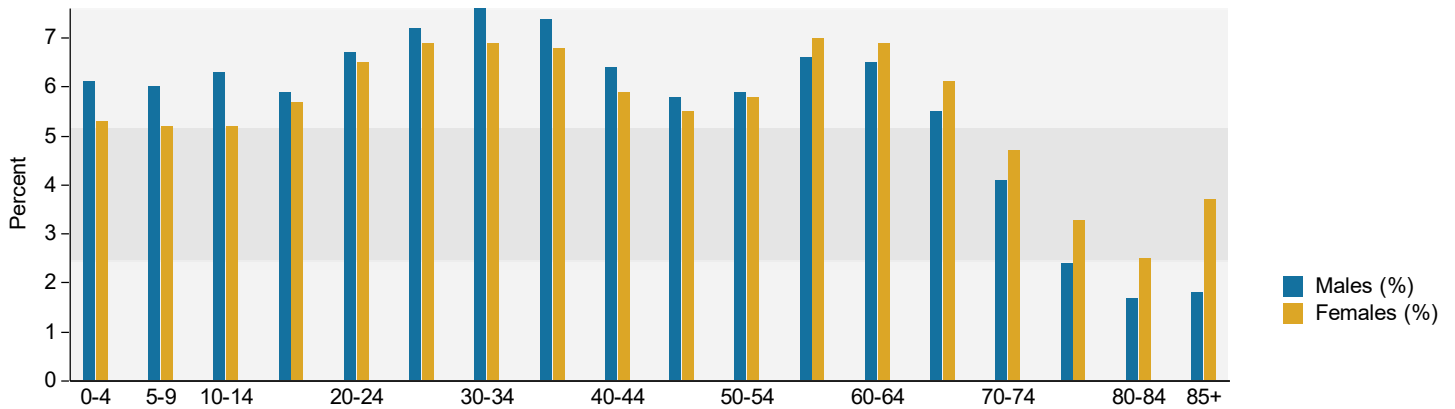
4208 Bishop Lane, Louisville, KY, 40218  
Oriental Garden  
Ring: 3 mile radius

Prepared by Charlotte Hollkamp  
Latitude: 38.20047  
Longitude: -85.68667

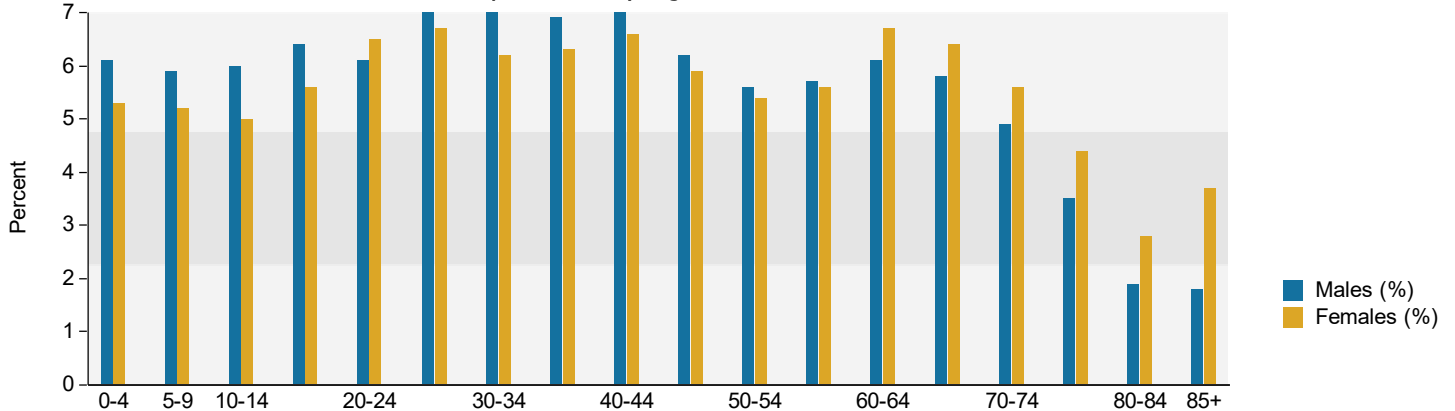
### Census 2010 Population by Age and Sex



### 2020 Population by Age and Sex



### 2025 Population by Age and Sex



Source: U.S. Census Bureau, Census 2010 Summary File 1. Esri forecasts for 2020 and 2025.

July 27, 2020



## Age by Sex Profile

4208 Bishop Lane, Louisville, KY, 40218  
Oriental Garden  
Ring: 5 mile radius

Prepared by Charlotte Hollkamp  
Latitude: 38.20047  
Longitude: -85.68667

Summary	Census 2010	2020	2025	2020-2025 Change	2020-2025 Annual Rate
Population	252,164	260,415	263,750	3,335	0.25%
Households	113,418	116,354	117,855	1,501	0.26%
Average Household Size	2.15	2.16	2.16	0.00	0.00%
Median Age	37.2	39.2	40.2	1.0	0.51%
Median Male Age	35.6	37.8	38.7	0.9	0.47%
Median Female Age	39.0	40.8	41.8	1.0	0.49%

Total Population by Age	Census 2010		2020		2025	
	Number	Percent	Number	Percent	Number	Percent
Total	252,163	100.0%	260,415	100.0%	263,751	100.0%
0 - 4	15,529	6.2%	14,257	5.5%	14,372	5.4%
5 - 9	13,665	5.4%	13,900	5.3%	13,823	5.2%
10 - 14	13,463	5.3%	13,957	5.4%	13,726	5.2%
15 - 19	15,159	6.0%	14,766	5.7%	15,211	5.8%
20 - 24	20,403	8.1%	18,211	7.0%	18,342	7.0%
25 - 29	21,923	8.7%	19,635	7.5%	19,207	7.3%
30 - 34	18,778	7.4%	19,804	7.6%	18,429	7.0%
35 - 39	16,230	6.4%	18,776	7.2%	18,049	6.8%
40 - 44	15,450	6.1%	16,263	6.2%	17,857	6.8%
45 - 49	17,666	7.0%	15,353	5.9%	16,196	6.1%
50 - 54	18,572	7.4%	15,726	6.0%	15,138	5.7%
55 - 59	16,907	6.7%	17,299	6.6%	15,157	5.7%
60 - 64	13,946	5.5%	16,850	6.5%	16,248	6.2%
65 - 69	9,249	3.7%	14,455	5.6%	15,576	5.9%
70 - 74	7,165	2.8%	11,253	4.3%	13,091	5.0%
75 - 79	6,417	2.5%	7,478	2.9%	10,073	3.8%
80 - 84	5,700	2.3%	5,409	2.1%	6,262	2.4%
85+	5,941	2.4%	7,023	2.7%	6,994	2.7%
18+	201,386	79.9%	210,561	80.9%	213,822	81.1%
21+	190,464	75.5%	199,839	76.7%	202,892	76.9%

Total Population by Age Dependency	Census 2010		2020		2025	
	Number	Percent	Number	Percent	Number	Percent
Total	252,163	100.0%	260,415	100.0%	263,751	100.0%
Child (<18)	50,777	20.1%	49,854	19.1%	49,928	18.9%
Working-Age (18-64)	166,913	66.2%	164,942	63.3%	161,826	61.4%
Senior (Age 65+)	34,472	13.7%	45,618	17.5%	51,996	19.7%
Child Dependency Ratio	30.4	-	30.2	-	30.9	-
Age Dependency Ratio	51.1	-	57.9	-	63.0	-
Senior Dependency Ratio	20.7	-	27.7	-	32.1	-

**Data Note:** Detail may not sum to totals due to rounding. Dependency ratios represent the number of dependents per 100 persons of the working-age population aged 18 to 64.

**Source:** U.S. Census Bureau, Census 2010 Summary File 1. Esri forecasts for 2020 and 2025.

July 27, 2020



## Age by Sex Profile

4208 Bishop Lane, Louisville, KY, 40218  
Oriental Garden  
Ring: 5 mile radius

Prepared by Charlotte Hollkamp  
Latitude: 38.20047  
Longitude: -85.68667

Male Population by Age	Census 2010		2020		2025	
	Number	Percent	Number	Percent	Number	Percent
Total	122,976	100.0%	127,790	100.0%	129,558	100.0%
0 - 4	8,071	6.6%	7,380	5.8%	7,451	5.8%
5 - 9	6,875	5.6%	7,203	5.6%	7,150	5.5%
10 - 14	6,945	5.6%	7,323	5.7%	7,174	5.5%
15 - 19	7,637	6.2%	7,251	5.7%	7,821	6.0%
20 - 24	10,191	8.3%	9,174	7.2%	8,891	6.9%
25 - 29	11,082	9.0%	9,959	7.8%	9,751	7.5%
30 - 34	9,739	7.9%	10,281	8.0%	9,574	7.4%
35 - 39	8,372	6.8%	9,616	7.5%	9,329	7.2%
40 - 44	7,910	6.4%	8,324	6.5%	9,069	7.0%
45 - 49	8,819	7.2%	7,815	6.1%	8,230	6.4%
50 - 54	9,129	7.4%	8,026	6.3%	7,676	5.9%
55 - 59	8,180	6.7%	8,465	6.6%	7,629	5.9%
60 - 64	6,648	5.4%	7,972	6.2%	7,786	6.0%
65 - 69	4,146	3.4%	6,649	5.2%	7,244	5.6%
70 - 74	3,002	2.4%	5,042	3.9%	5,818	4.5%
75 - 79	2,497	2.0%	3,083	2.4%	4,323	3.3%
80 - 84	2,089	1.7%	2,093	1.6%	2,467	1.9%
85+	1,644	1.3%	2,134	1.7%	2,174	1.7%
18+	96,951	78.8%	102,054	79.9%	103,595	80.0%

Female Population by Age	Census 2010		2020		2025	
	Number	Percent	Number	Percent	Number	Percent
Total	129,187	100.0%	132,625	100.0%	134,192	100.0%
0 - 4	7,458	5.8%	6,878	5.2%	6,921	5.2%
5 - 9	6,790	5.3%	6,697	5.0%	6,673	5.0%
10 - 14	6,518	5.0%	6,634	5.0%	6,552	4.9%
15 - 19	7,522	5.8%	7,515	5.7%	7,390	5.5%
20 - 24	10,212	7.9%	9,037	6.8%	9,451	7.0%
25 - 29	10,842	8.4%	9,676	7.3%	9,456	7.0%
30 - 34	9,039	7.0%	9,523	7.2%	8,855	6.6%
35 - 39	7,857	6.1%	9,160	6.9%	8,720	6.5%
40 - 44	7,539	5.8%	7,939	6.0%	8,788	6.5%
45 - 49	8,847	6.8%	7,538	5.7%	7,966	5.9%
50 - 54	9,444	7.3%	7,700	5.8%	7,462	5.6%
55 - 59	8,727	6.8%	8,834	6.7%	7,528	5.6%
60 - 64	7,298	5.6%	8,878	6.7%	8,462	6.3%
65 - 69	5,103	4.0%	7,805	5.9%	8,332	6.2%
70 - 74	4,163	3.2%	6,211	4.7%	7,274	5.4%
75 - 79	3,920	3.0%	4,395	3.3%	5,750	4.3%
80 - 84	3,611	2.8%	3,316	2.5%	3,796	2.8%
85+	4,297	3.3%	4,889	3.7%	4,820	3.6%
18+	104,434	80.8%	108,507	81.8%	110,227	82.1%

Source: U.S. Census Bureau, Census 2010 Summary File 1. Esri forecasts for 2020 and 2025.

July 27, 2020



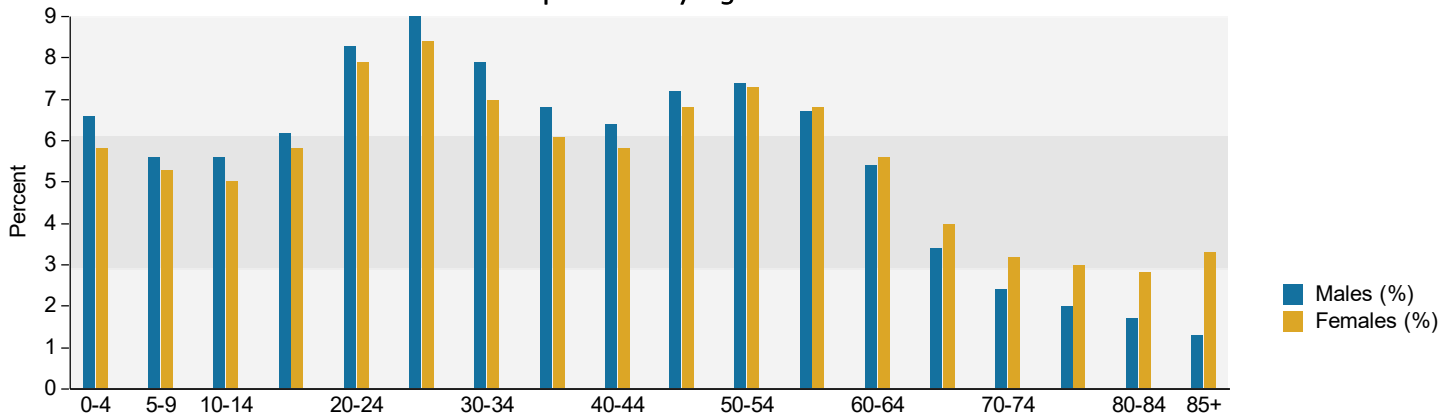


# Age by Sex Profile

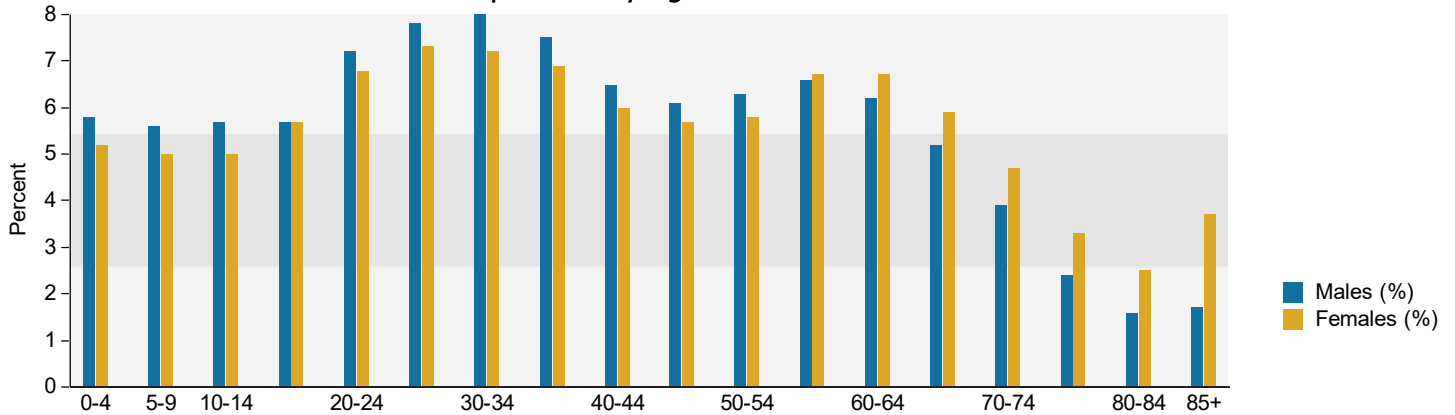
4208 Bishop Lane, Louisville, KY, 40218  
Oriental Garden  
Ring: 5 mile radius

Prepared by Charlotte Hollkamp  
Latitude: 38.20047  
Longitude: -85.68667

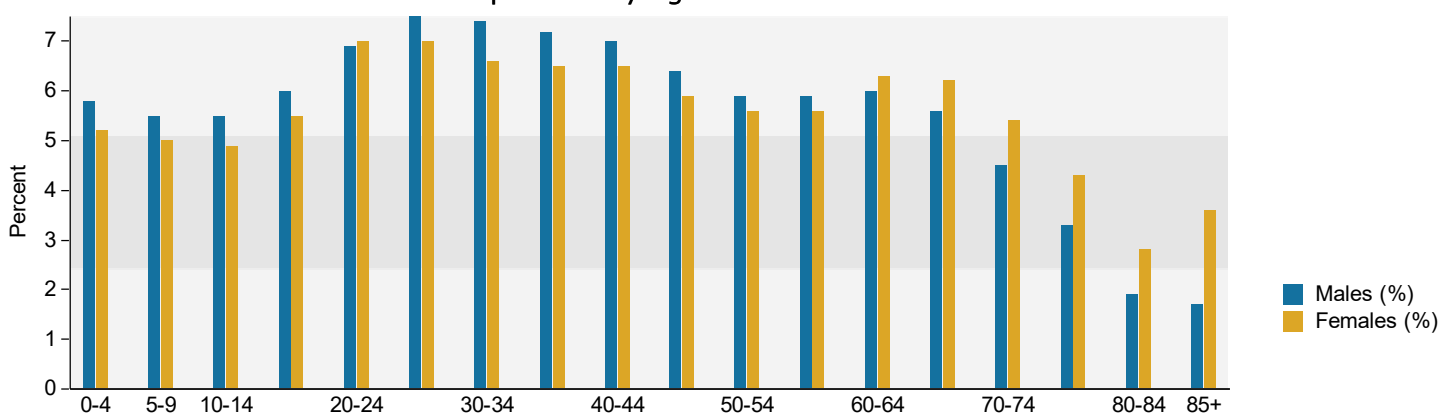
### Census 2010 Population by Age and Sex



### 2020 Population by Age and Sex



### 2025 Population by Age and Sex



Source: U.S. Census Bureau, Census 2010 Summary File 1. Esri forecasts for 2020 and 2025.