

EXECUTIVE SUMMARY

POST ROAD DEVELOPMENT LAND

1250 S Post Road. Oklahoma City, OK 73130



Sale Price

\$350,000

OFFERING SUMMARY

Available SF:

Lot Size: 4.38 Acres

Price / SF: \$1.83

Zoning: C-3 - Commercial
Restricted

Market: Greater Oklahoma City
Metro

Submarket: Midwest City

Traffic Count: 11,268

PROPERTY OVERVIEW

This property is an ideal retail, medical office or general office development. The property has been predominately cleared and graded. The recent developments along SE 15th Street make this a natural extension of that growth.

LOCATION OVERVIEW

This property is located north of SE 15th Street along Post Road in the growing area of Midwest City.

PROPERTY HIGHLIGHTS



Adept Commercial Real Estate, LLC
1 NE 2nd Street, Suite 101
Oklahoma City, OK 73104

Ian Duty-Dean
405.642.4677
ian@adeptcre.com

POST ROAD DEVELOPMENT LAND

1250 S Post Road. Oklahoma City, OK 73130



Adept Commercial Real Estate, LLC

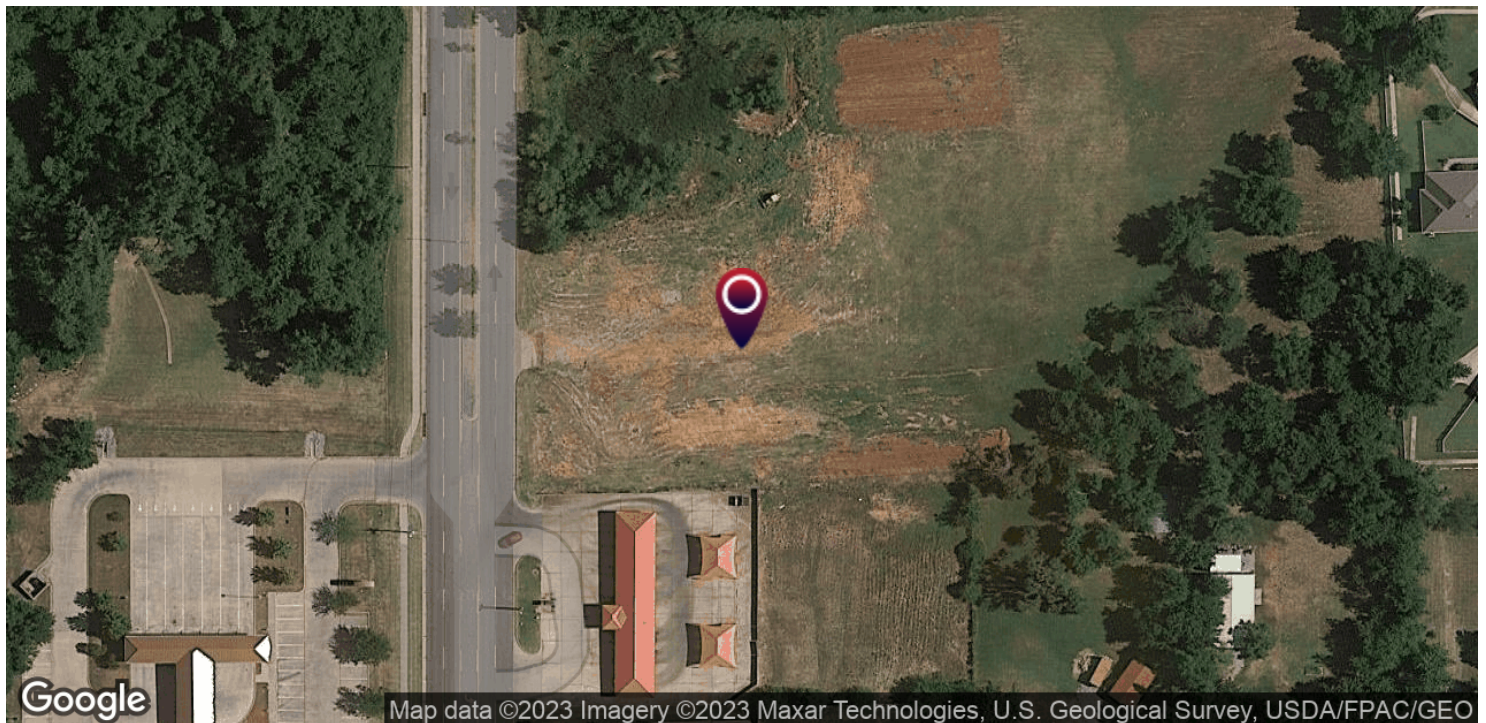
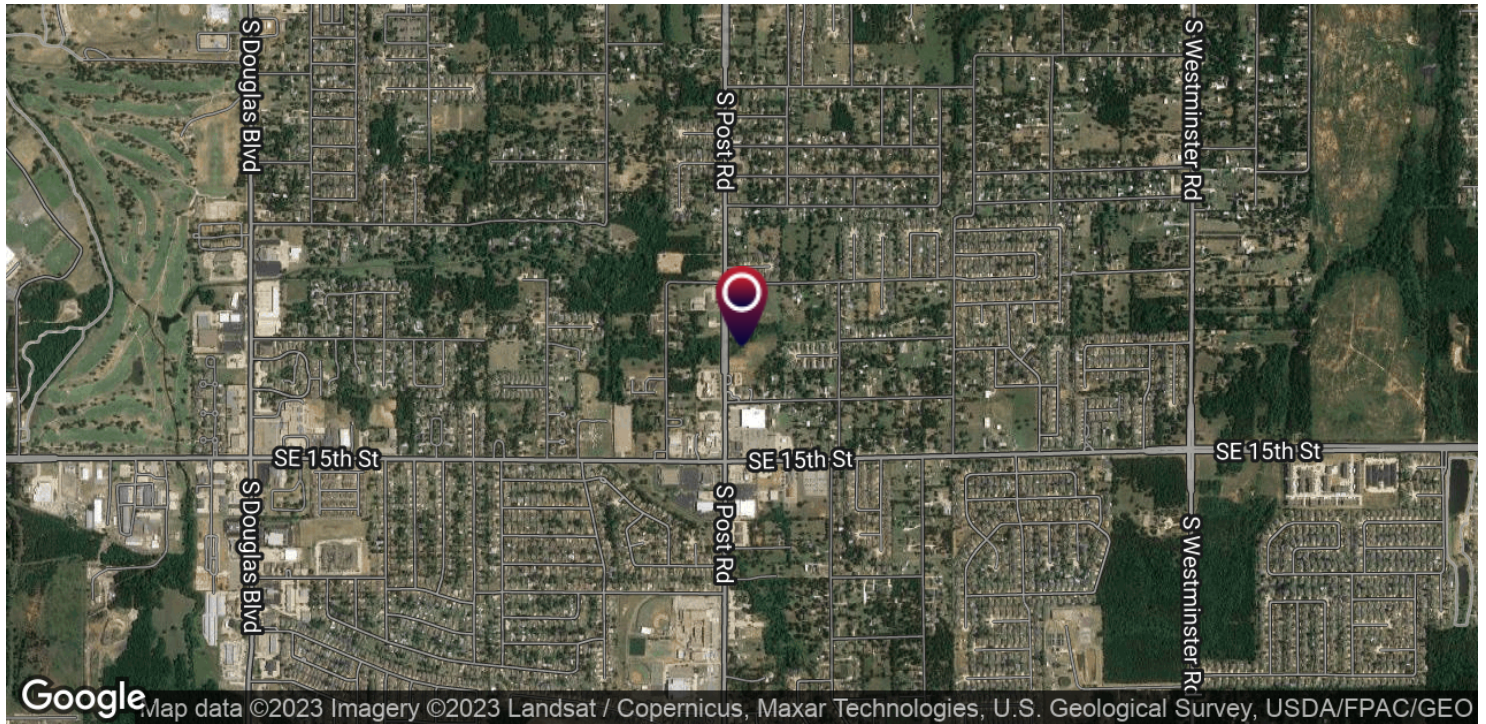
1 NE 2nd Street, Suite 101
Oklahoma City, OK 73104

Ian Duty-Dean

405.642.4677
ian@adeptcre.com

POST ROAD DEVELOPMENT LAND

1250 S Post Road. Oklahoma City, OK 73130



Adept Commercial Real Estate, LLC

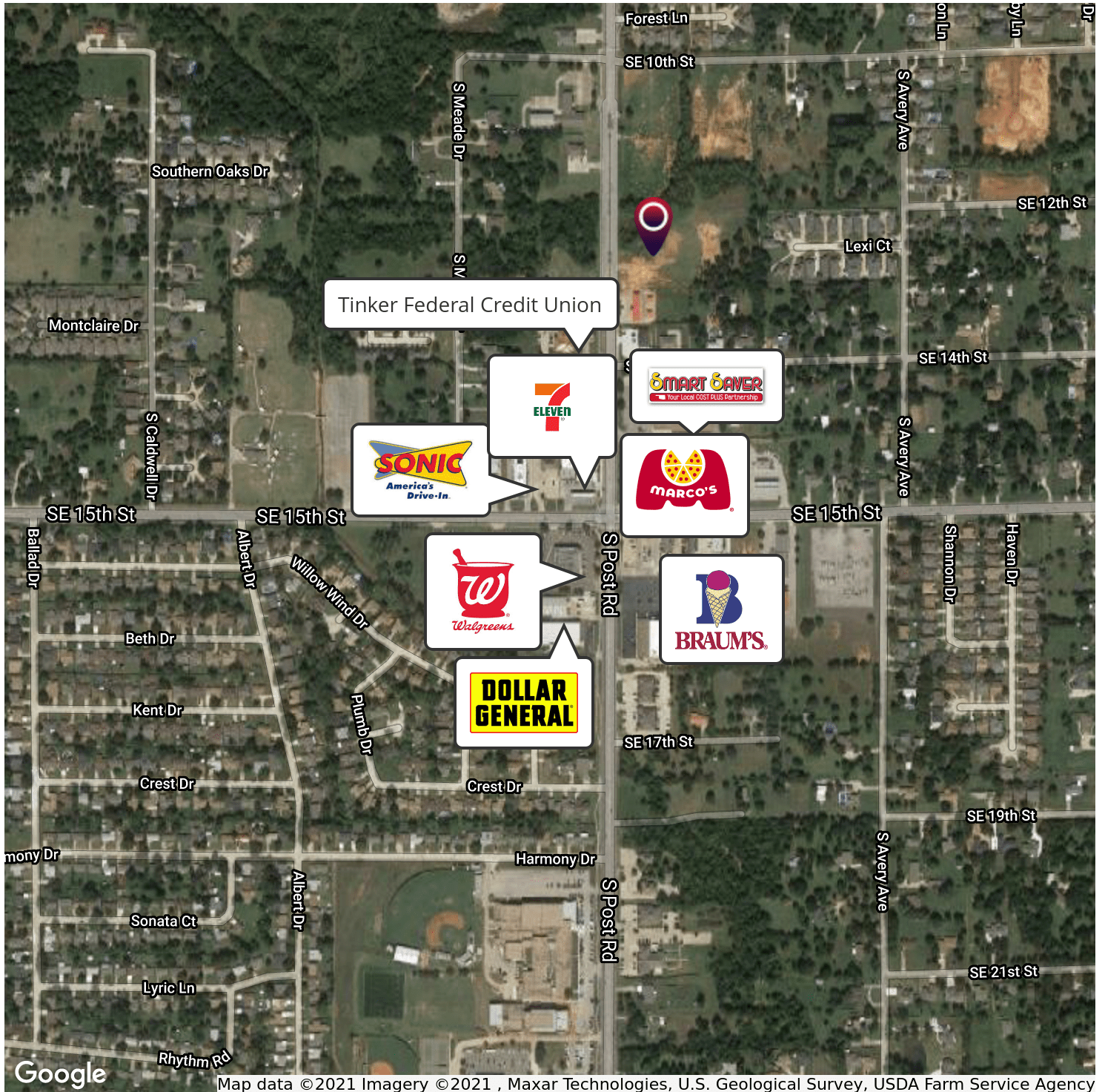
1 NE 2nd Street, Suite 101
Oklahoma City, OK 73104

Ian Duty-Dean

405.642.4677
ian@adeptcre.com

POST ROAD DEVELOPMENT LAND

1250 S Post Road. Oklahoma City, OK 73130

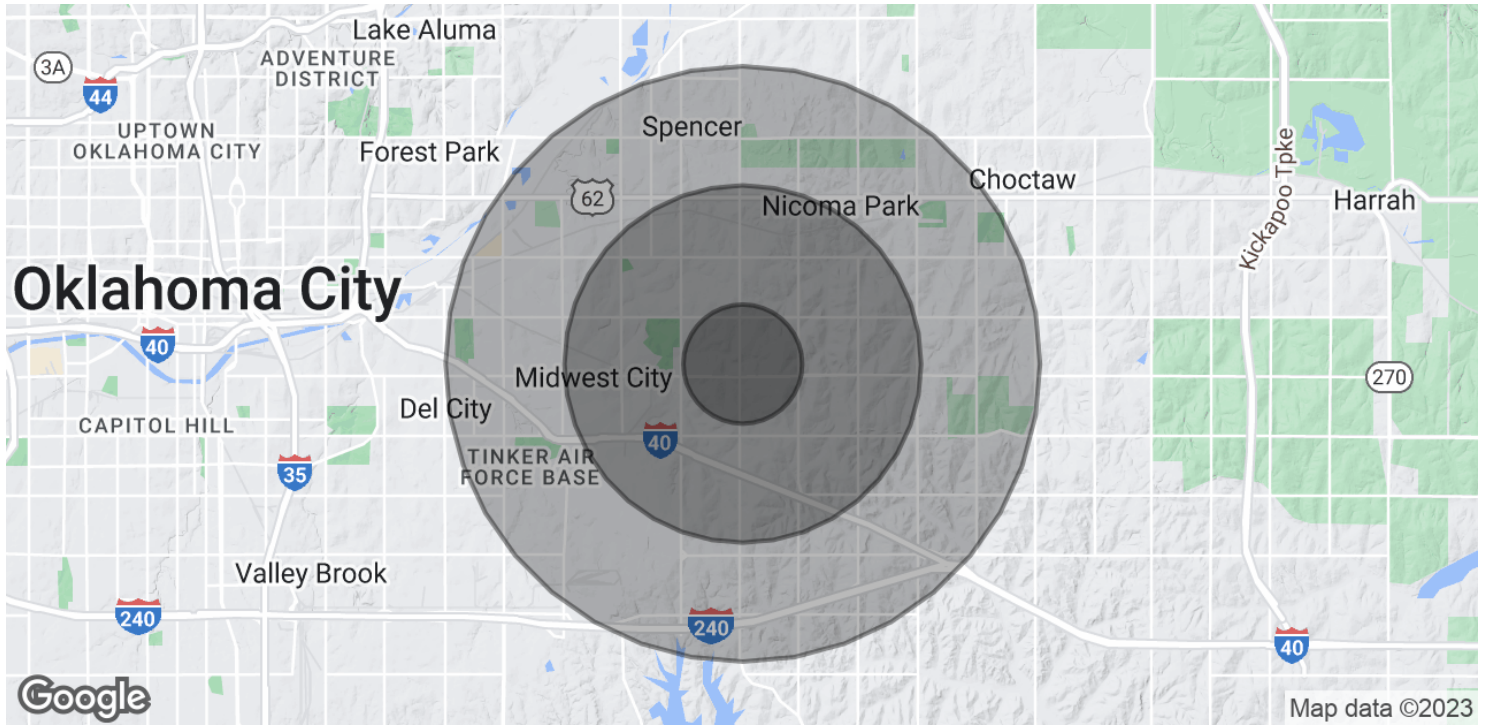


Adept Commercial Real Estate, LLC
1 NE 2nd Street, Suite 101
Oklahoma City, OK 73104

Ian Duty-Dean
405.642.4677
ian@adeptcre.com

POST ROAD DEVELOPMENT LAND

1250 S Post Road. Oklahoma City, OK 73130



POPULATION	1 MILE	3 MILES	5 MILES
Total Population	5,955	39,213	85,487
Average age	39.8	37.0	36.2
Average age (Male)	39.2	36.0	35.3
Average age (Female)	40.7	38.4	37.2

HOUSEHOLDS & INCOME	1 MILE	3 MILES	5 MILES
Total households	2,414	16,089	34,879
# of persons per HH	2.5	2.4	2.5
Average HH income	\$64,443	\$54,926	\$53,786
Average house value	\$150,981	\$118,431	\$108,106

* Demographic data derived from 2020 ACS - US Census



Adept Commercial Real Estate, LLC
1 NE 2nd Street, Suite 101
Oklahoma City, OK 73104

Ian Duty-Dean
405.642.4677
ian@adeptcre.com

POST ROAD DEVELOPMENT LAND

1250 S Post Road. Oklahoma City, OK 73130

IAN DUTY-DEAN

Advisor

ian@adeptcre.com

Direct: 405.642.4677

OK #123546

PROFESSIONAL BACKGROUND

Ian Duty-Dean is an Advisor with ADEPT Commercial Real Estate. Prior to joining ADEPT, he was an Advisor for Emersons Commercial Real Estate and SVN Land Run. Ian is a real estate professional with five years of experience in commercial real estate brokerage. After graduating Classen School of Advanced Studies he went on to pursue a degree at the University of Oklahoma. During that time Ian landed an internship with the Oklahoma City Urban Renewal Authority. There he had the opportunity to collaborate with and learn some of the most established developers in Oklahoma City.

Ian's primary focus is adaptive reuse, site selection, and expansions. While having a passion for urban development, Ian has also represented tenants and landlords in rural communities throughout Oklahoma. Ian has the capacity to assist clients with their retail, office, and industrial needs small and large.

EDUCATION

University of Oklahoma - Multidisciplinary Studies

Georgetown University - Master of Professional Studies in Real Estate

MEMBERSHIPS

Urban Land Institute

Commercial Real Estate Council

International Council of Shopping Centers



Adept Commercial Real Estate, LLC

1 NE 2nd Street, Suite 101
Oklahoma City, OK 73104

Ian Duty-Dean

405.642.4677
ian@adeptcre.com