

INDUSTRIAL/FLEX SPACE FOR LEASE

1005 W. DETWEILLER DRIVE

PEORIA, IL 61615



Lease Rate

\$10.00 SF/YR

OFFERING SUMMARY

Building Size:	20,000 SF
Available SF:	3,000 SF
Year Built:	1990

PROPERTY OVERVIEW

Built in 1990, this pre-engineered metal building offers one (1) available space at 3,000 square feet and is in excellent condition. It features docks, overhead doors, and is sprinklered, with 18 feet of ceiling clearance.

LOCATION OVERVIEW

Located at Mt. Hawley Industrial Park just off Knoxville in Peoria, this flex space is near Detail Peoria, Mt. Hawley Bowl, Green Chevy, Avanti's, and many other establishments. Plus, it's only a short drive from Pioneer Parkway, several shopping plazas, and Route 6.

SPACE HIGHLIGHTS

- 3,000 sf flex space
- Building built in 1990
- 1 OH doors & 1 dock with leveler
- 18' Ceiling Heights
- Sprinklered & Separately Metered

MADISON MALOOF

madison@malooftcom.com

2411 W. Cornerstone Ct, Peoria, IL 61614 | 309.693.3000 | malooftcommercial.com



INDUSTRIAL/FLEX SPACE FOR LEASE

1005 W. DETWEILLER DRIVE

PEORIA, IL 61615



MADISON MALOOF
madison@malooofcom.com

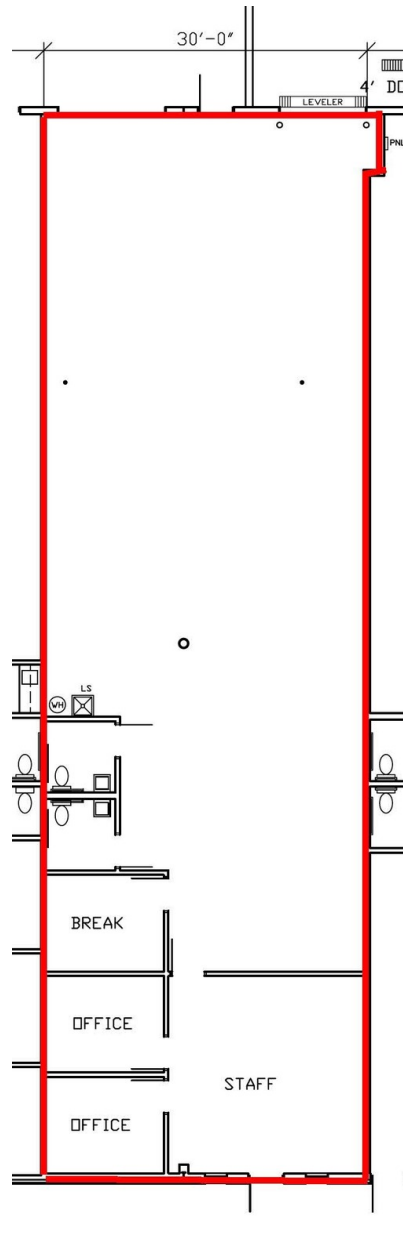
2411 W. Cornerstone Ct, Peoria, IL 61614 | 309.693.3000 | malooofcommercial.com



INDUSTRIAL/FLEX SPACE FOR LEASE

1005 W. DETWEILLER DRIVE

PEORIA, IL 61615



VACANT

3,000 SQ. FT.
1005 W. DETWEILLER DRIVE

MADISON MALOOF
madison@malooofcom.com

2411 W. Cornerstone Ct, Peoria, IL 61614 | 309.693.3000 | malooofcommercial.com



INDUSTRIAL/FLEX SPACE FOR LEASE

1005 W. DETWEILLER DRIVE

PEORIA, IL 61615



MADISON MALOOF

madison@malooofcom.com

2411 W. Cornerstone Ct, Peoria, IL 61614 | 309.693.3000 | malooofcommercial.com

