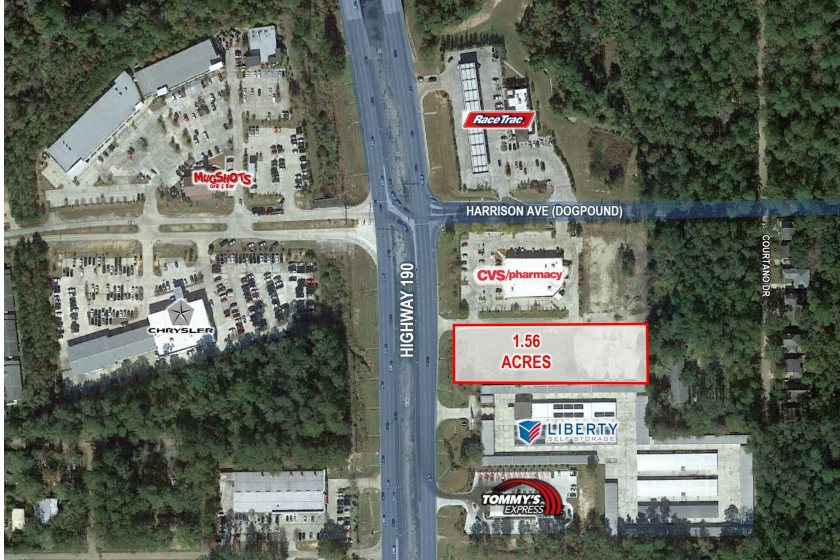


PROPERTY SUMMARY



Property Highlights

- Located at the lighted intersection of Highway 190 and Harrison Avenue (Dog Pound Road)
- Strategically positioned at the intersection of Hwy 190 & Harrison Ave, this site enjoys unparalleled visibility and high traffic flow. Benefit from ingress & egress from both thoroughfares.
- Ideally suited for Quick Service Restaurant w/ Drive-thru, Bank, Automotive repair and service, etc.
- Frontage on two (2) main arteries
- Multiple zoning districts: HC-1/HC-2 (see included zoning map)
- Certain deed restrictions apply - see agent

Offering Summary

Lease Rate:	\$10,000/month, net
Lot Size:	1.56 Acres

Demographics	1 Mile	3 Miles	5 Miles
Total Households	778	4,810	13,346
Total Population	2,533	13,534	35,668
Average HH Income	\$54,858	\$79,959	\$78,535

**Matthew Pittman, CCIM**  
504.322.1275  
mpittman@beaubox.com

Broker of Record, Beau J. Box; Licensed by the Louisiana Real Estate Commission, Mississippi Real Estate Commission, Alabama Real Estate Commission and Florida Real Estate Commission, USA. This information has been secured from sources we believe to be reliable, but we make no representations or warranties, expressed or implied, as to the accuracy of the information. References to square footage or age are approximate. Buyer must verify the information and bears all risk for any inaccuracies. © Beau Box Commercial Real Estate. 5500 Bankers Avenue, Baton Rouge, LA 70808 | 225-237-3343. | March 06, 2024





1850 N Highway 190  
Covington, LA 70433

ADDITIONAL PHOTOS



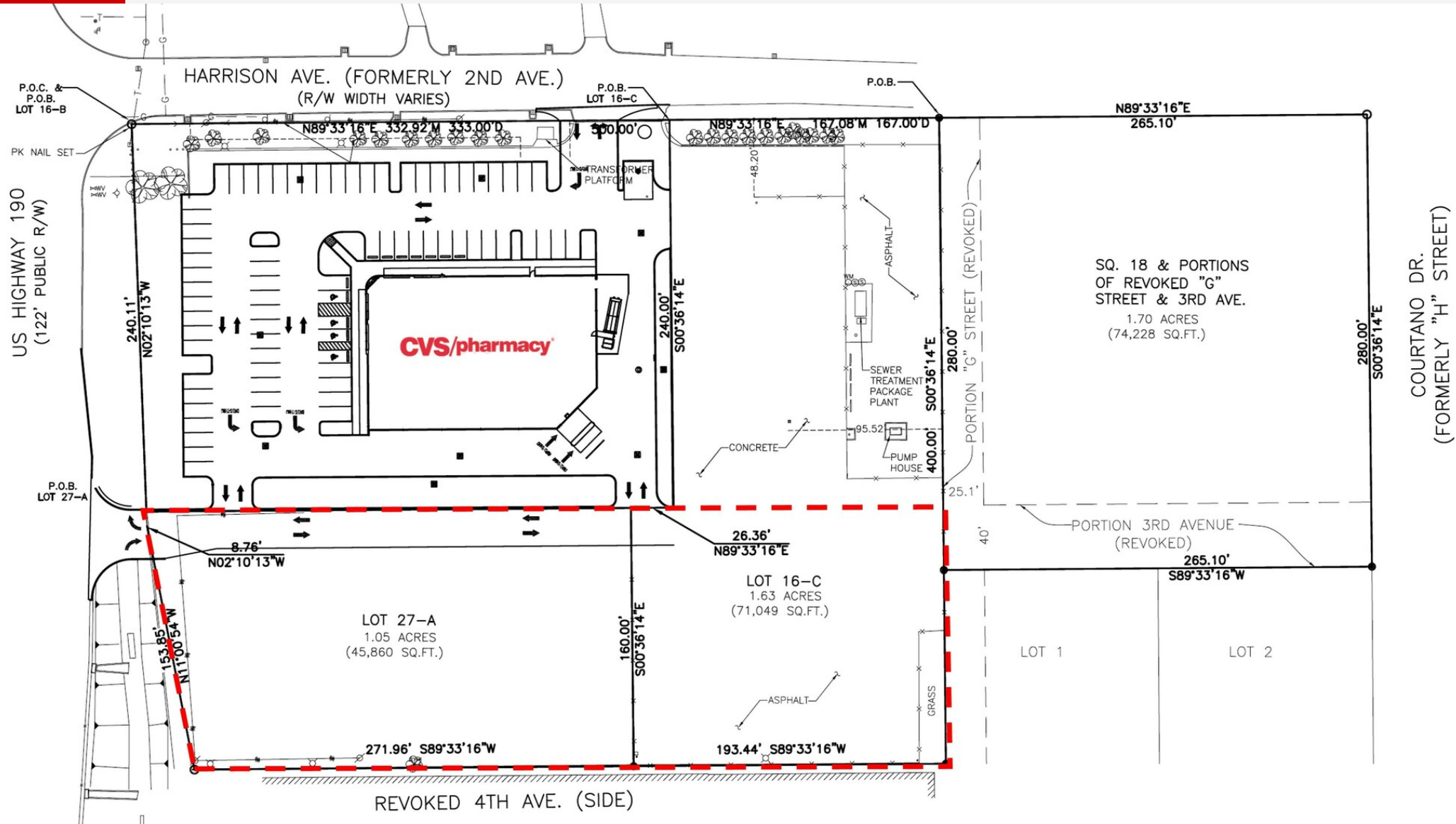
**Matthew Pittman, CCIM**  
504.322.1275  
mpittman@beaubox.com

Broker of Record, Beau J. Box; Licensed by the Louisiana Real Estate Commission, Mississippi Real Estate Commission, Alabama Real Estate Commission and Florida Real Estate Commission, USA. This information has been secured from sources we believe to be reliable, but we make no representations or warranties, expressed or implied, as to the accuracy of the information. References to square footage or age are approximate. Buyer must verify the information and bears all risk for any inaccuracies. © Beau Box Commercial Real Estate. 5500 Bankers Avenue, Baton Rouge, LA 70808 | 225-237-3343. | March 06, 2024





SURVEY



**Matthew Pittman, CCIM**  
504.322.1275  
mpittman@beaubox.com

Broker of Record, Beau J. Box; Licensed by the Louisiana Real Estate Commission, Mississippi Real Estate Commission, Alabama Real Estate Commission and Florida Real Estate Commission, USA. This information has been secured from sources we believe to be reliable, but we make no representations or warranties, expressed or implied, as to the accuracy of the information. References to square footage or age are approximate. Buyer must verify the information and bears all risk for any inaccuracies. © Beau Box Commercial Real Estate. 5500 Bankers Avenue, Baton Rouge, LA 70808 | 225-237-3343. | March 06, 2024





1850 N Highway 190  
Covington, LA 70433

ZONING



**Matthew Pittman, CCIM**  
504.322.1275  
mpittman@beaibox.com

Broker of Record, Beau J. Box; Licensed by the Louisiana Real Estate Commission, Mississippi Real Estate Commission, Alabama Real Estate Commission and Florida Real Estate Commission, USA. This information has been secured from sources we believe to be reliable, but we make no representations or warranties, expressed or implied, as to the accuracy of the information. References to square footage or age are approximate. Buyer must verify the information and bears all risk for any inaccuracies. © Beau Box Commercial Real Estate. 5500 Bankers Avenue, Baton Rouge, LA 70808 | 225-237-3343. | March 06, 2024

