

PROPERTY SUMMARY

20 N LAKE ST, FOREST LAKE, MN 55025



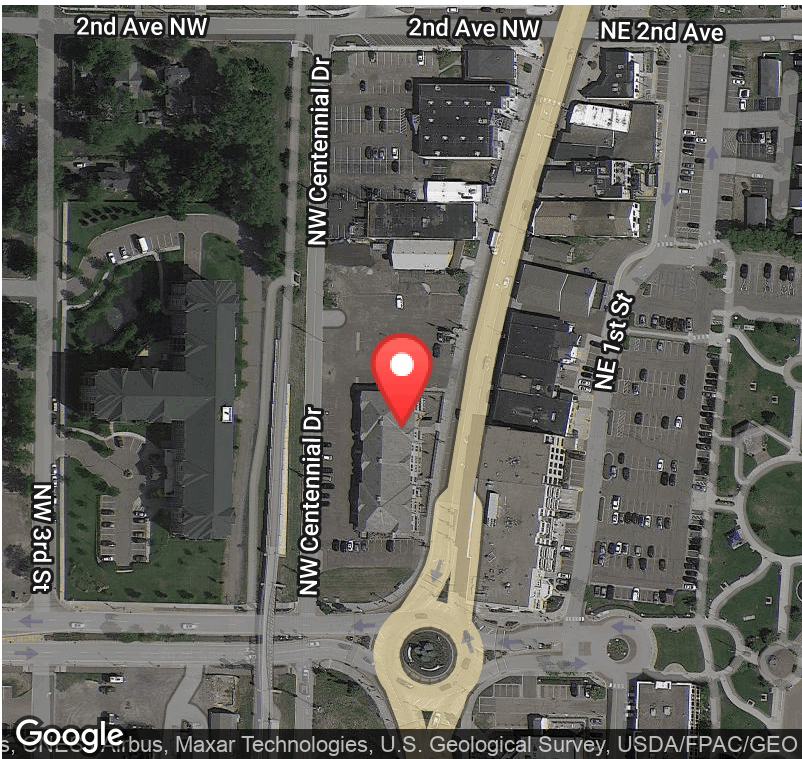
PROPERTY HIGHLIGHTS

- Dynamic Blend of Offices, Service and Retail Tenants
- Large Off Street Parking Lot
- New carpet and paint throughout.

OFFERING SUMMARY

Lease Rate:	Negotiable
Available SF:	850 SF
2024 CAM/Taxes:	\$9.09

DEMOGRAPHICS	1 MILE	3 MILES	5 MILES
Total Households	1,442	6,735	11,406
Total Population	3,466	16,830	29,535
Average HH Income	\$62,508	\$70,819	\$77,862

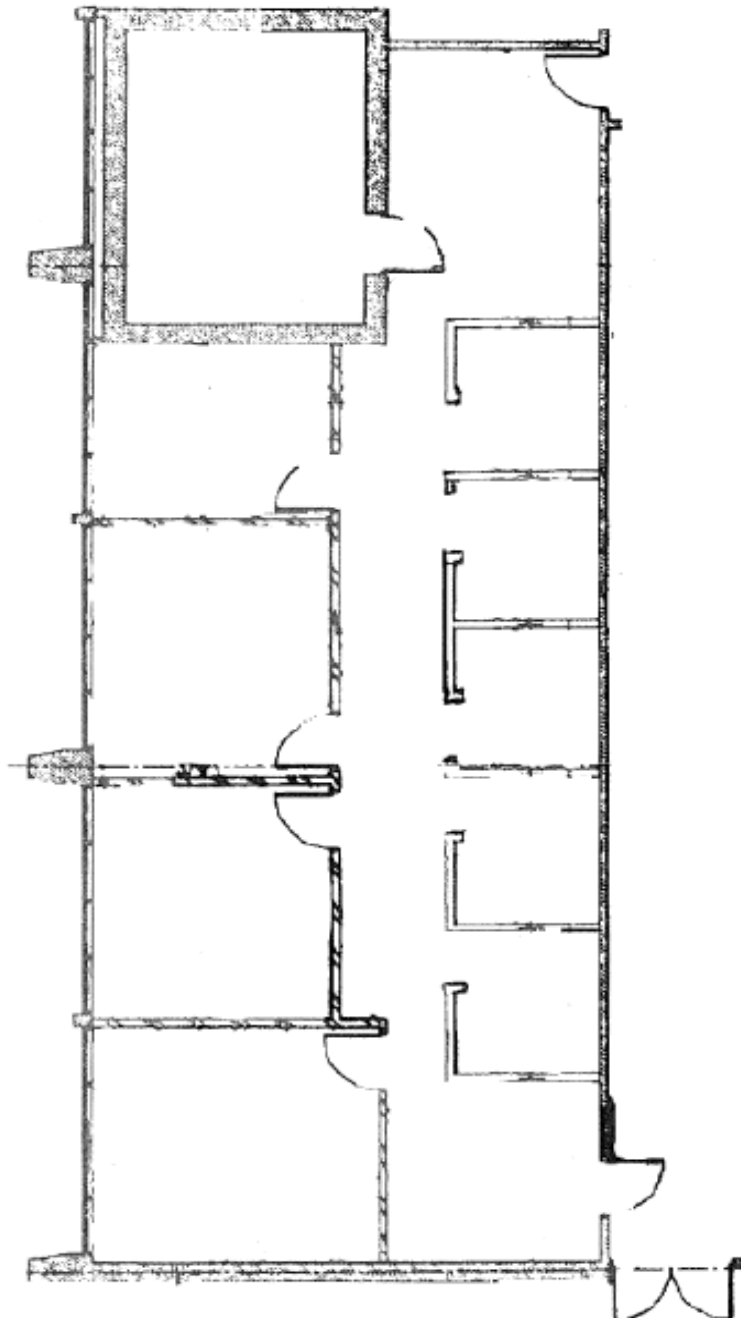


Office Building For Lease

20 N Lake St

SUITE 101 - 2070 SF

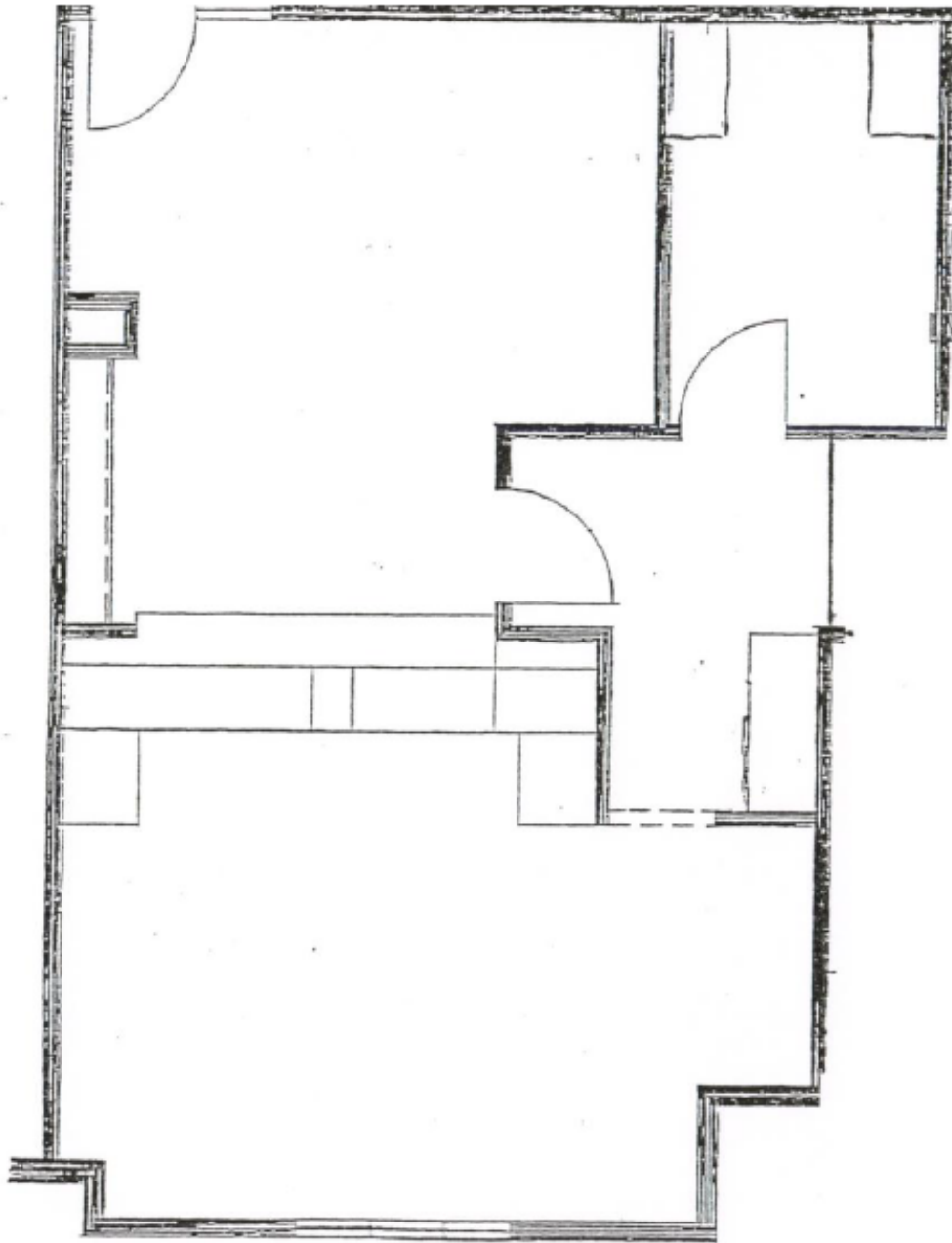
20 N LAKE ST, FOREST LAKE, MN 55025



SUITE 320 - 850 SF

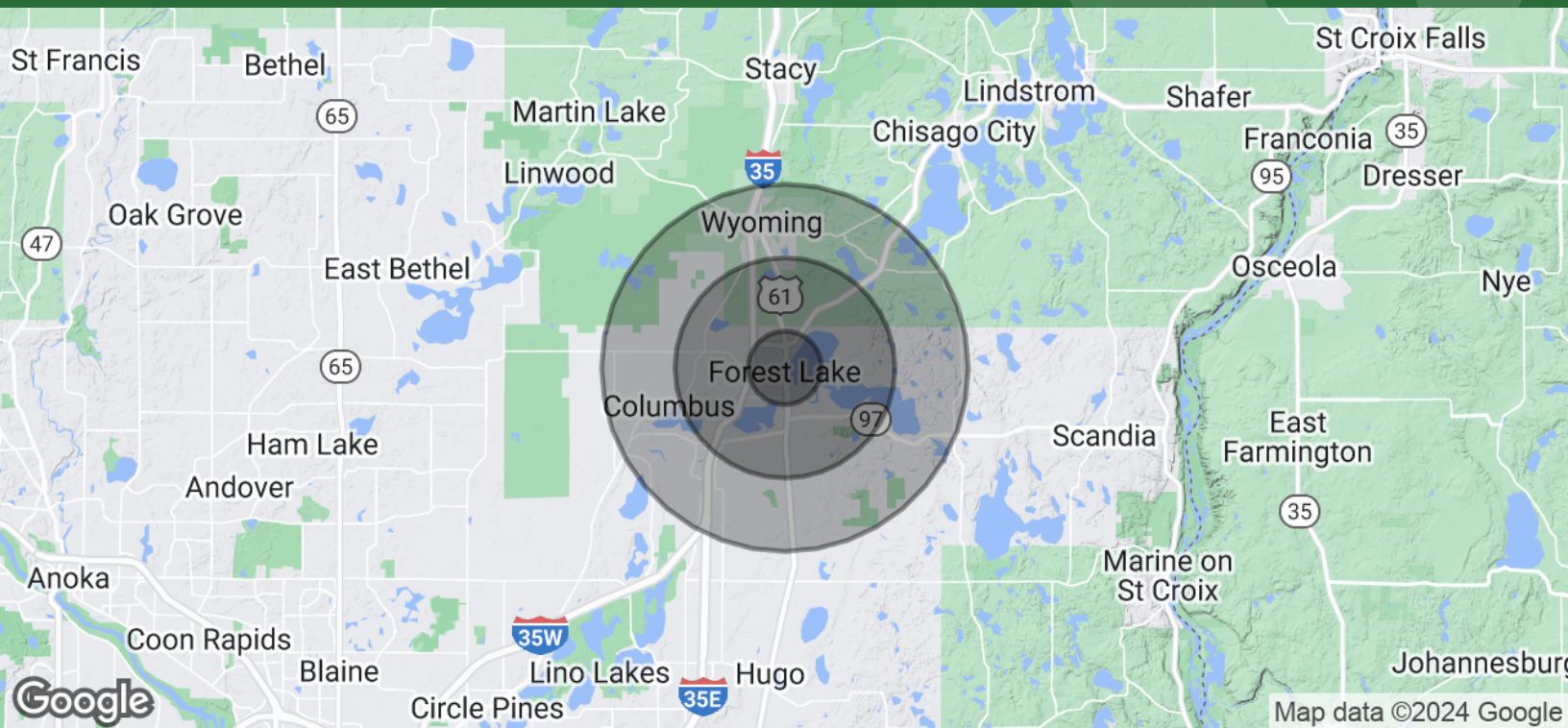
20 N LAKE ST, FOREST LAKE, MN 55025

Suite 320, 850 RSF



DEMOGRAPHICS MAP & REPORT

20 N LAKE ST, FOREST LAKE, MN 55025



POPULATION	1 MILE	3 MILES	5 MILES
Total Population	3,466	16,830	29,535
Average Age	36.2	37.0	37.7
Average Age (Male)	35.2	36.7	37.6
Average Age (Female)	37.4	37.7	38.1
HOUSEHOLDS & INCOME	1 MILE	3 MILES	5 MILES
Total Households	1,442	6,735	11,406
# of Persons per HH	2.4	2.5	2.6
Average HH Income	\$62,508	\$70,819	\$77,862
Average House Value	\$387,350	\$381,085	\$368,757

* Demographic data derived from 2020 ACS - US Census