

# Former Auto Dealership

## 1400 Westbank Expressway Harvey, LA 70058

### PROPERTY SUMMARY



### Property Highlights

- Excellent exposure to Westbank Expressway (66k vehicles per day).
- Existing large pylon signage.
- Flag lot with driveway access to Green Leaf Drive
- Possible uses include: Equipment rental, Self Storage Facility, Hotel redevelopment, Used car dealership.
- Zoned C-2

### Offering Summary

Sale Price:	\$1,725,000
Lot Size:	3.21 Acres



**Matthew Pittman, CCIM**  
504.322.1275  
mpittman@beaubox.com

**Cres Gardner**  
504.261.2032  
cgardner@beaubox.com

Broker of Record, Beau J. Box; Licensed by the Louisiana Real Estate Commission, Mississippi Real Estate Commission, Alabama Real Estate Commission and Florida Real Estate Commission, USA. This information has been secured from sources we believe to be reliable, but we make no representations or warranties, expressed or implied, as to the accuracy of the information. References to square footage or age are approximate. Buyer must verify the information and bears all risk for any inaccuracies. © Beau Box Commercial Real Estate. | February 25, 2022





# Former Auto Dealership

## 1400 Westbank Expressway Harvey, LA 70058

### ADDITIONAL PHOTOS



**Matthew Pittman, CCIM**  
504.322.1275  
mpittman@beaubox.com

**Cres Gardner**  
504.261.2032  
cgardner@beaubox.com

Broker of Record, Beau J. Box; Licensed by the Louisiana Real Estate Commission, Mississippi Real Estate Commission, Alabama Real Estate Commission and Florida Real Estate Commission, USA. This information has been secured from sources we believe to be reliable, but we make no representations or warranties, expressed or implied, as to the accuracy of the information. References to square footage or age are approximate. Buyer must verify the information and bears all risk for any inaccuracies. © Beau Box Commercial Real Estate. | February 25, 2022

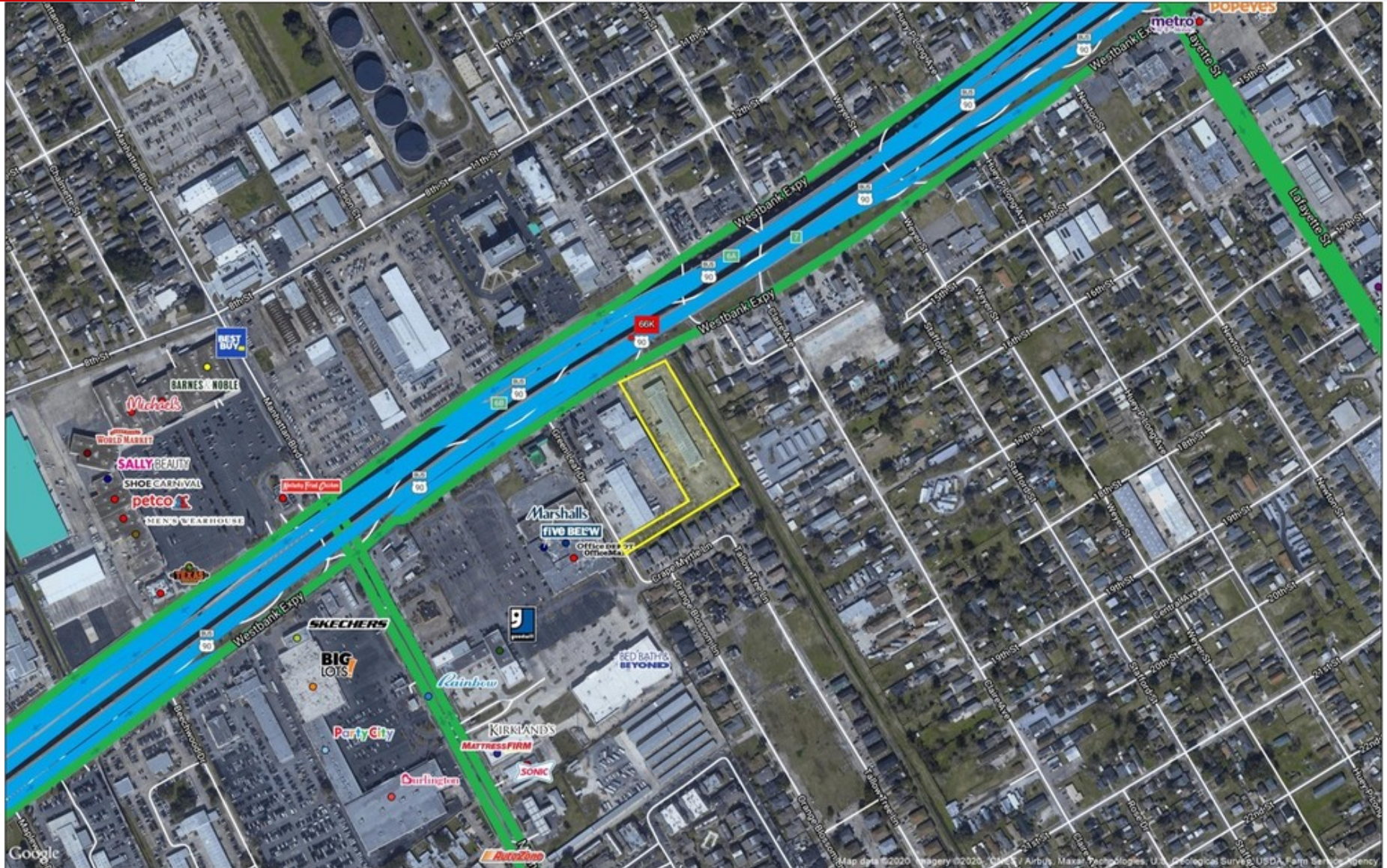




# Former Auto Dealership

## 1400 Westbank Expressway Harvey, LA 70058

### LOCATION MAPS



**Matthew Pittman, CCIM**  
504.322.1275  
mpittman@beaubox.com

**Cres Gardner**  
504.261.2032  
cgardner@beaubox.com

Broker of Record, Beau J. Box; Licensed by the Louisiana Real Estate Commission, Mississippi Real Estate Commission, Alabama Real Estate Commission and Florida Real Estate Commission, USA. This information has been secured from sources we believe to be reliable, but we make no representations or warranties, expressed or implied, as to the accuracy of the information. References to square footage or age are approximate. Buyer must verify the information and bears all risk for any inaccuracies. © Beau Box Commercial Real Estate. | February 25, 2022

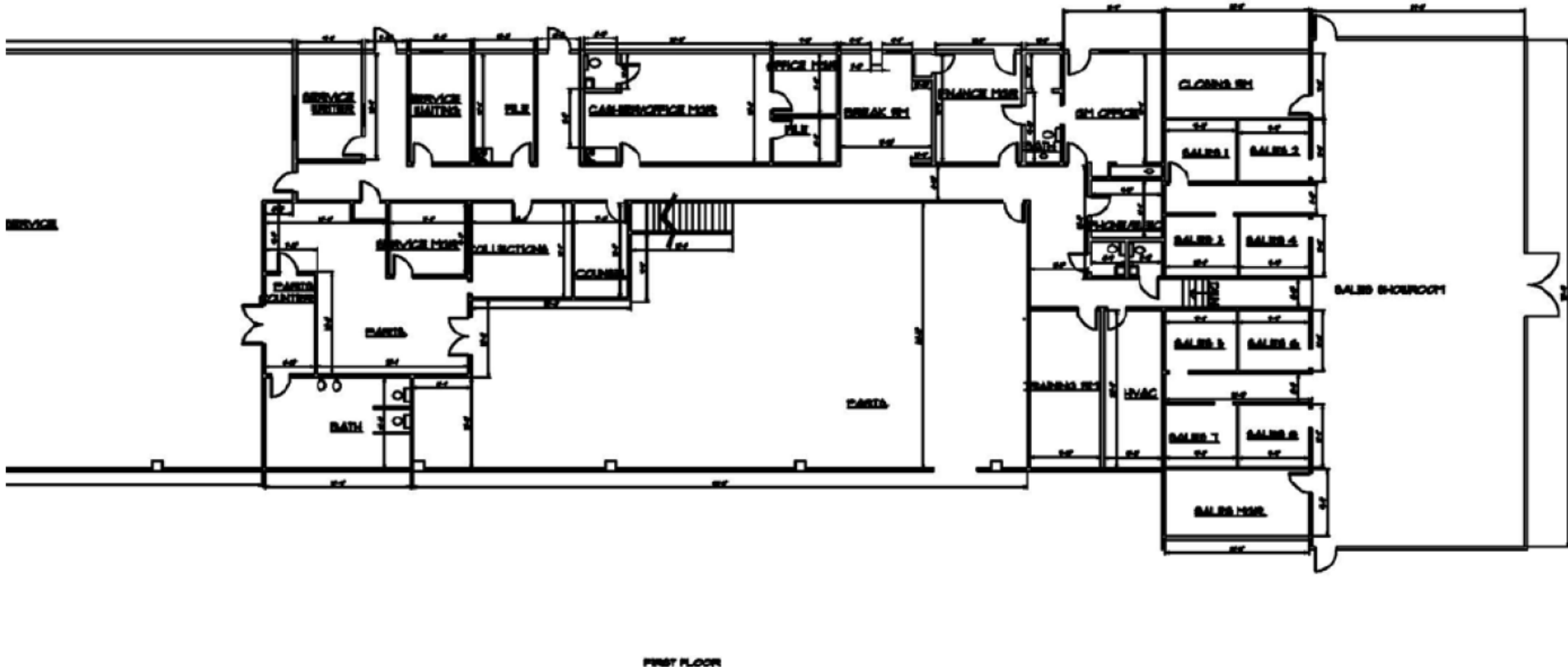






**Former Auto Dealership**  
1400 Westbank Expressway Harvey, LA 70058

**FLOOR PLAN**



**1 PARTIAL PRELIMINARY FLOOR PLAN**  
SCALE: 1" = 20'-0"

**Matthew Pittman, CCIM**   **Cres Gardner**  
504.322.1275   504.261.2032  
mpittman@beaubox.com   cgardner@beaubox.com

Broker of Record, Beau J. Box; Licensed by the Louisiana Real Estate Commission, Mississippi Real Estate Commission, Alabama Real Estate Commission and Florida Real Estate Commission, USA. This information has been secured from sources we believe to be reliable, but we make no representations or warranties, expressed or implied, as to the accuracy of the information. References to square footage or age are approximate. Buyer must verify the information and bears all risk for any inaccuracies. © Beau Box Commercial Real Estate. | February 25, 2022



# Former Auto Dealership

## 1400 Westbank Expressway Harvey, LA 70058

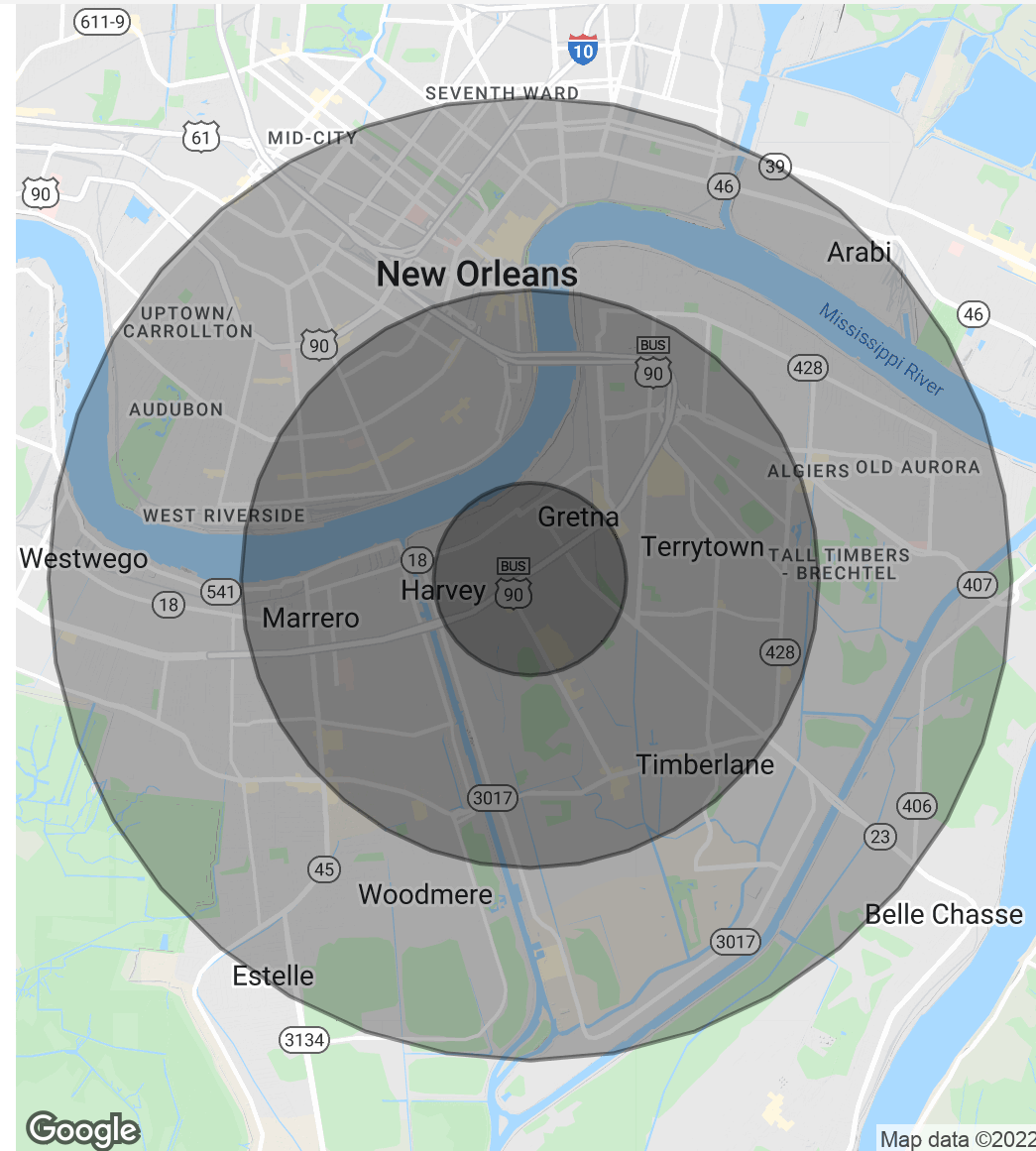
### DEMOGRAPHICS MAP & REPORT

Population	1 Mile	3 Miles	5 Miles
Total Population	13,406	120,448	326,823
Average Age	35.7	37.1	36.3
Average Age (Male)	33.7	36.0	35.2
Average Age (Female)	38.2	38.4	37.6

Households & Income	1 Mile	3 Miles	5 Miles
Total Households	4,889	48,528	123,774
# Of Persons Per HH	2.7	2.5	2.6
Average HH Income	\$46,751	\$57,566	\$62,320
Average House Value	\$126,157	\$180,398	\$237,928

\* Demographic data derived from 2010 US Census



**Matthew Pittman, CCIM**  
 504.322.1275  
 mpittman@beaubox.com

**Cres Gardner**  
 504.261.2032  
 cgardner@beaubox.com

Broker of Record, Beau J. Box; Licensed by the Louisiana Real Estate Commission, Mississippi Real Estate Commission, Alabama Real Estate Commission and Florida Real Estate Commission, USA. This information has been secured from sources we believe to be reliable, but we make no representations or warranties, expressed or implied, as to the accuracy of the information. References to square footage or age are approximate. Buyer must verify the information and bears all risk for any inaccuracies. © Beau Box Commercial Real Estate. | February 25, 2022

