



9.45 ACRES NEAR MISSOURI'S NATIONAL VETERANS MEMORIAL

VETERANS MEMORIAL PARKWAY, PERRYVILLE, MO 63775

FOR SALE

Presented By:

CHRIS COLE, JD, CCIM

573.334.5200
ccole@lorimont.com

PROPERTY SUMMARY



PROPERTY DESCRIPTION

9.45 acres ready for development near Missouri's National Veterans Memorial. Suitable for various uses.

PROPERTY HIGHLIGHTS

- 9.45 Acre Commercial Parcel
- Suitable for Various Uses
- Near Veterans Memorial
- City Utilities Nearby
- Close to Industrial Businesses

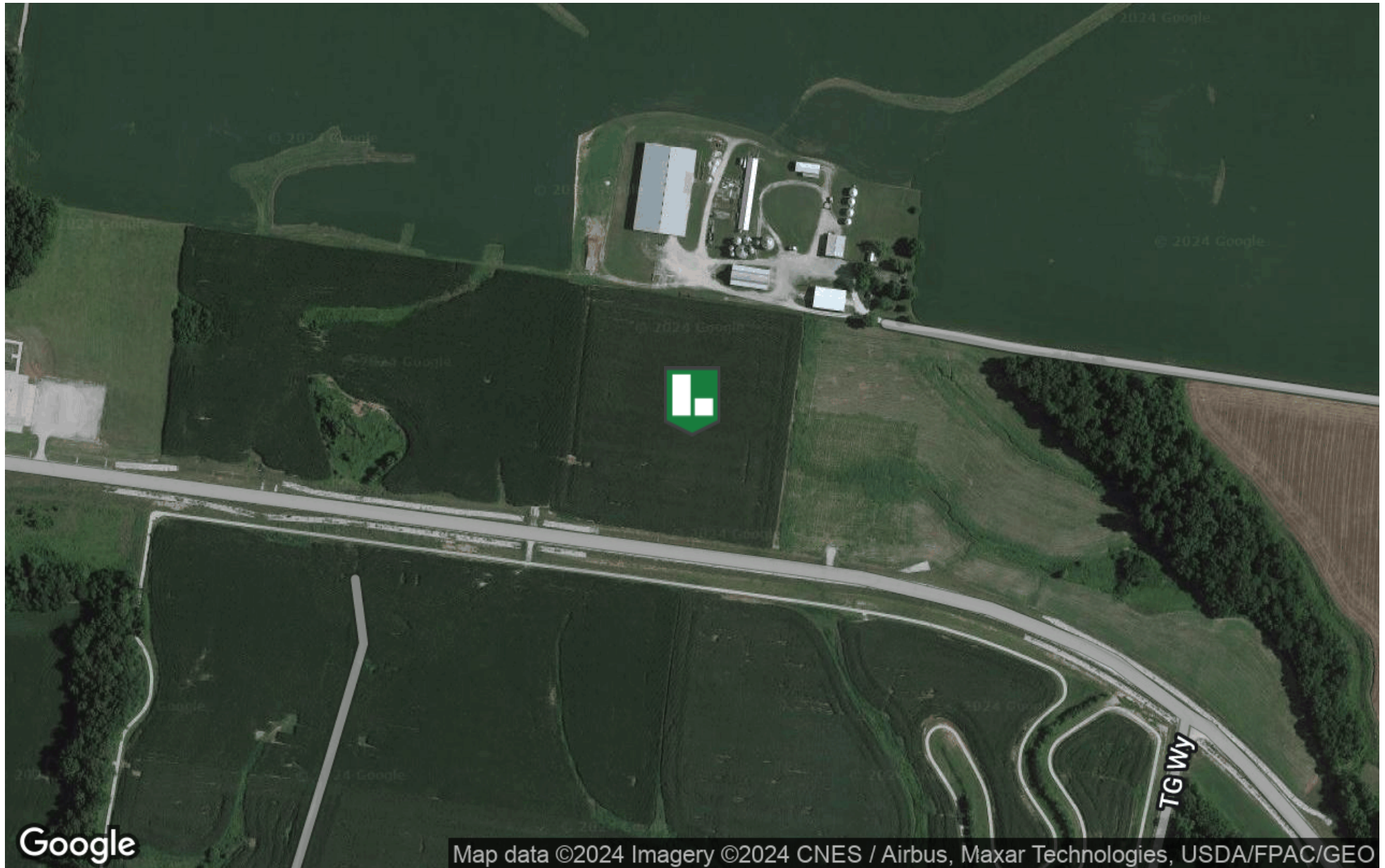
OFFERING SUMMARY

Sale Price:	\$469,900
Lot Size:	9.45 Acres

DEMOGRAPHICS	1 MILE	5 MILES	10 MILES
Total Households	382	4,714	6,898
Total Population	967	11,513	17,286
Average HH Income	\$49,516	\$55,042	\$55,584

Presented By: **CHRIS COLE, JD, CCIM** | ccole@lorimont.com

LOCATION MAP



Presented By: **CHRIS COLE, JD, CCIM** | ccole@lorimont.com

ADDITIONAL PHOTOS



Presented By: **CHRIS COLE, JD, CCIM** | ccole@lorimont.com

RETAILER MAP



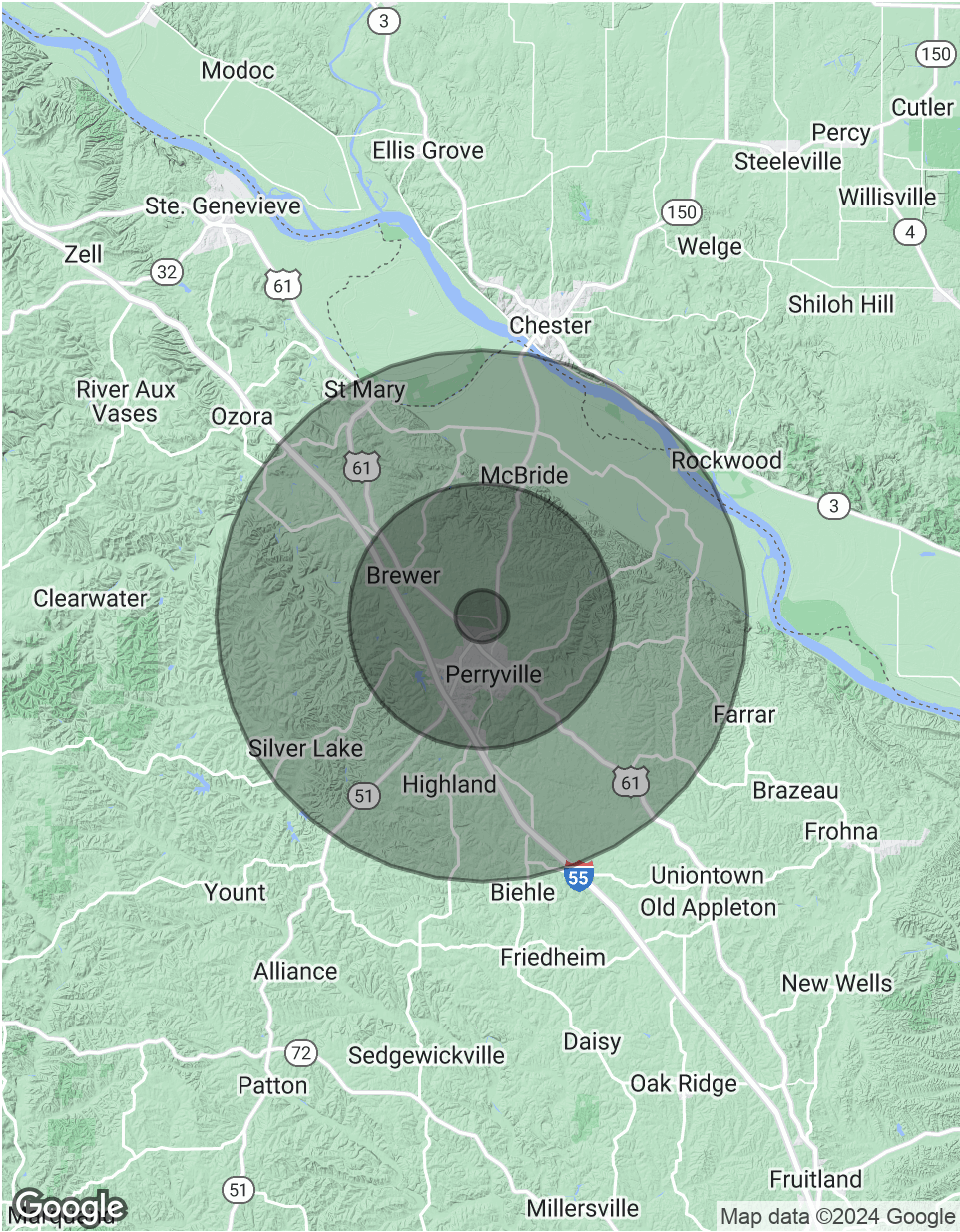
Presented By: **CHRIS COLE, JD, CCIM** | ccole@lorimont.com

DEMOGRAPHICS MAP & REPORT

POPULATION	1 MILE	5 MILES	10 MILES
Total Population	967	11,513	17,286
Average age	33.0	35.7	37.4
Average age (Male)	30.3	33.1	35.7
Average age (Female)	38.8	39.8	40.3

HOUSEHOLDS & INCOME	1 MILE	5 MILES	10 MILES
Total households	382	4,714	6,898
# of persons per HH	2.5	2.4	2.5
Average HH income	\$49,516	\$55,042	\$55,584
Average house value	\$112,097	\$122,043	\$138,058

* Demographic data derived from 2020 ACS - US Census



Presented By: **CHRIS COLE, JD, CCIM** | ccole@lorimont.com