

LAND FOR SALE

1504 W HIGHWAY 100 LOT 2



1504
W HIGHWAY 100
PORT ISABEL, TX



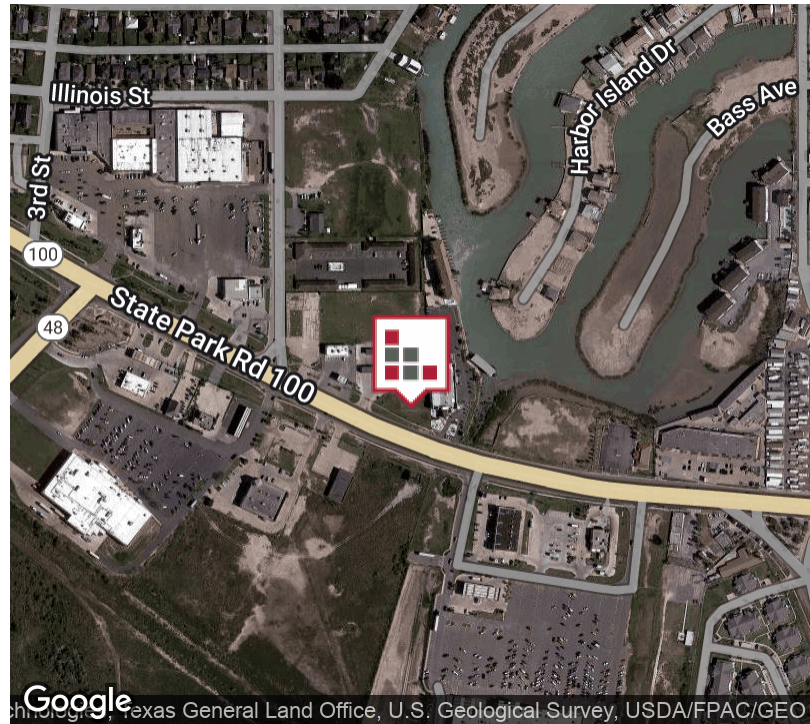
Former Whataburger site at this Signalized Intersection of Highway 100 in Port Isabel on the way to South Padre Island. This location boasts daily traffic counts of 28,988 CPD and has three (3) potential ingress/egress points from Highway 100 and two (2) potential locations for Pylon signage subject to City review and approval. Corner Lot has been combined for a potential two-lot Retail Pad Site.



FOR SALE

1504 W HIGHWAY 100 - LOT 2

EXECUTIVE SUMMARY



Sale Price	\$1,246,729
------------	-------------

OFFERING SUMMARY

Available SF:	73,337
Lot Size:	1.68 Acres
Price / PSF:	\$12.41
Zoning:	Commercial
Market:	Rio Grande Valley
Submarket:	Port Isabel

PROPERTY OVERVIEW

Join Quick Quack Car Wash at this Signalized Intersection across from HEB in Port Isabel, Texas. This +/- 1.68 acre Retail Lot is only minutes away from South Padre Island and boasts Daily Traffic Counts of 29,988 Cars per Day. Traffic Counts are significantly higher during the Island's busy season. Ingress/Egress from Highway 100 and a REA to be provided by Quick Quack for access from 2nd Street. Irregular Lot Dimensions are 112' frontage x 478' depth x 488' width in rear — See attached Survey for specifics.

PROPERTY HIGHLIGHTS

- Quick Quack Car Wash Cotenacy
- Located Across from HEB
- NEQ of Signalized Intersection - Highway 100
- Signalized Intersection
- 28,988 CPD TX DOT



The information contained herein was obtained from sources deemed reliable; however, CHRE makes no guarantees, warranties or representations to the completeness or accuracy thereof. The presentation of this real estate information is subject to errors; omissions; change of price; prior sale or lease; or withdrawal without notice.

CINDY HOPKINS REAL ESTATE

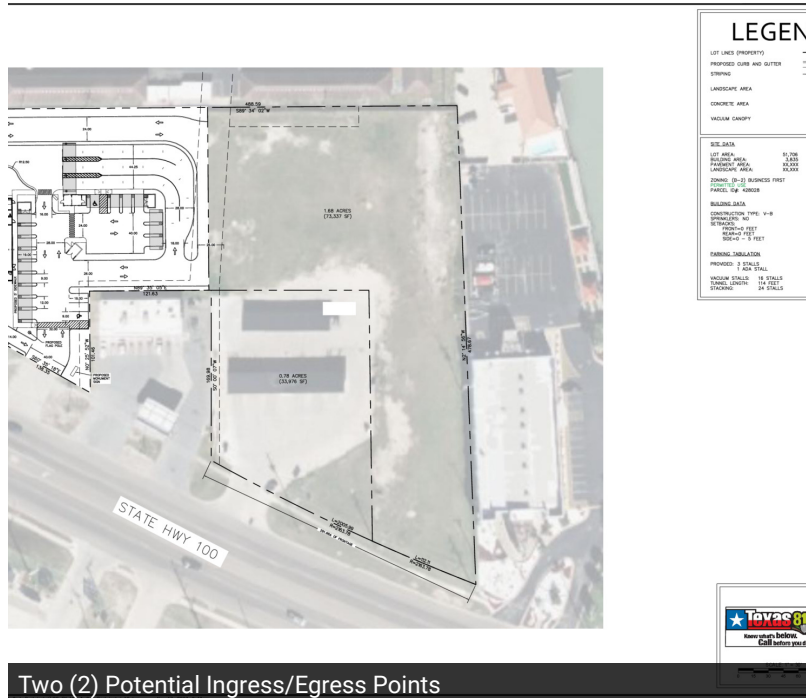
222 E Van Buren, Suite 617 // Harlingen, TX 78550
956.778.3255 // cindy@chopkinsrealestate.com

FOR SALE 1504 W HIGHWAY 100 - LOT 2

ADDITIONAL PHOTOS



Signalized Intersection



Two (2) Potential Ingress/Egress Points



Adjacent to Salt Life Retail Store



Next to car wash

FOR SALE

1504 W HIGHWAY 100 - LOT 2

AERIAL MAP



The information contained herein was obtained from sources deemed reliable; however, CHRE makes no guaranties, warranties or representations to the completeness or accuracy thereof. The presentation of this real estate information is subject to errors; omissions; change of price; prior sale or lease; or withdrawal without notice.

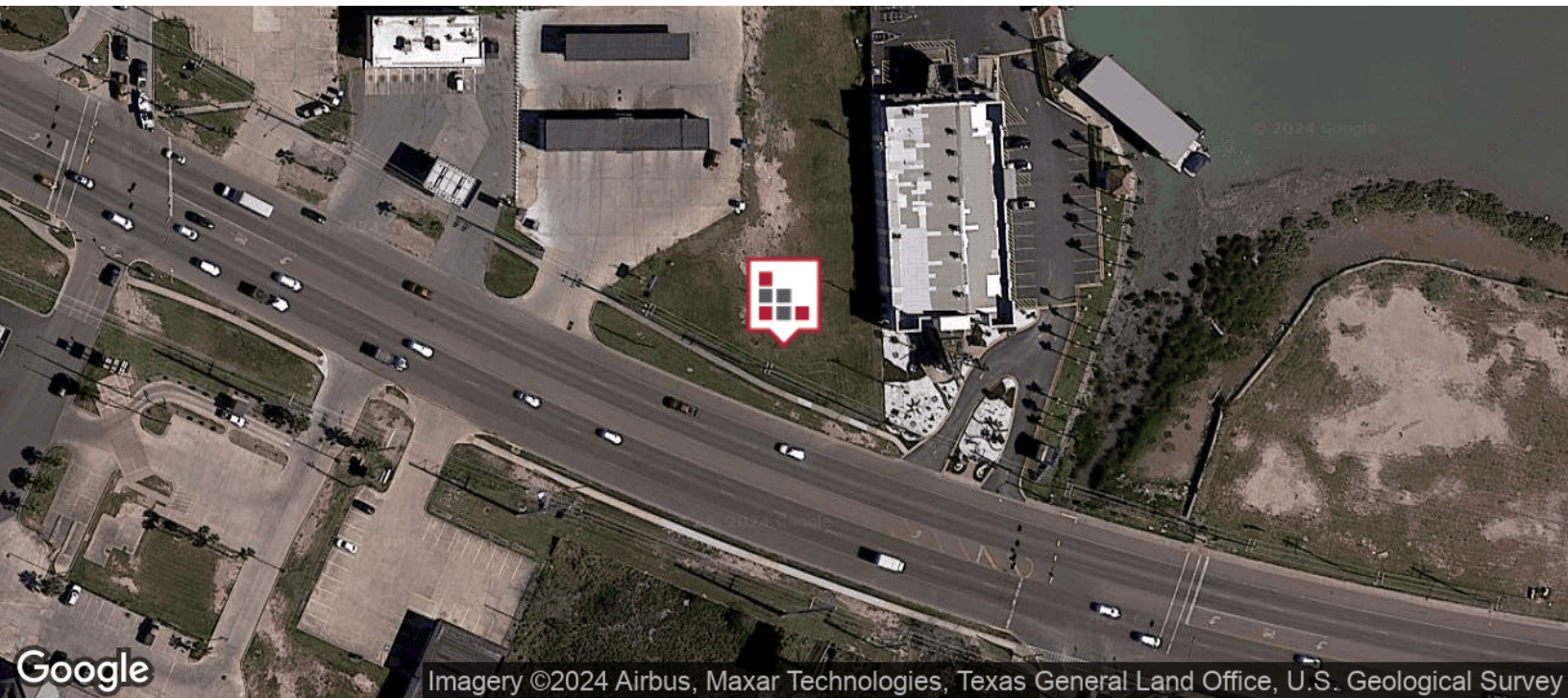
CINDY HOPKINS REAL ESTATE

222 E Van Buren, Suite 617 // Harlingen, TX 78550
956.778.3255 // cindy@chopkinsrealestate.com

FOR SALE

1504 W HIGHWAY 100 - LOT 2

LOCATION MAPS



The information contained herein was obtained from sources deemed reliable; however, CHRE makes no guaranties, warranties or representations to the completeness or accuracy thereof. The presentation of this real estate information is subject to errors; omissions; change of price; prior sale or lease; or withdrawal without notice.

CINDY HOPKINS REAL ESTATE

222 E Van Buren, Suite 617 // Harlingen, TX 78550
956.778.3255 // cindy@chopkinsrealestate.com

PROPOSED SITE PLAN

222 E Van Buren, Suite 617 // Harlingen, TX 78550
956.778.3255 // cindy@chopkinsrealestate.com

FOR SALE
1504 W HIGHWAY 100

RETAILER MAP



Map data ©2024 Imagery ©2024 Airbus, CNES / Airbus, Maxar Technologies, Texas General Land Office, U.S. Geological Survey, USDA/FPAC/GEO