



REMODELED IN 2023 / INDUSTRIAL PROPERTY FOR LEASE

Commercial / Industrial Complex For Lease

7750 9th St. SW Vero Beach, FL 32968

UP TO +/-55,250 SF OF INDUSTRIAL AND OFFICE SPACE

presented by:

BRIAN L. LIGHTLE, CCIM, SIOR, CRE

Founder | Broker Associate

321.863.3228

brian@teamlbr.com

LARGE INDUSTRIAL COMPLEX

Warehouse / Manufacturing Complex on 5.57 Acre Lot • 7750 9th St. SW Vero Beach, FL 32968



OFFERING SUMMARY

Available SF: +/-55,250 SF

Lease Rate: \$8.00/psf Gross
Tenant Pays All Utilities

Lot Size: 5.57 Acres

Year Built: 1989

Building Size: +/-55,250 SF

Zoning: IL

2023 COMPLETELY RENOVATED NEW WINDOWS, ROOF, HVAC

Zoned IL (Heavy Industrial - Indian River County)

Large Campus Suitable for Many Uses Including:

Heavy Industrial, Manufacturing, Large Machine Shop, Auto or Aircraft Plant

LED Lighting Throughout

120 Striped Parking Spaces & Attached Garage with 3 Doors & Parking for 6 Vehicles

+/- 31,750 /sf of High and Low Bay

Warehouse, Manufacturing Areas Configured As:

+/- 9,000/sf Non HVAC Shipping- Receiving Area

+/- 8,250/sf High Bay Warehouse with Additional +/- 2,250/sf Mezzanine Space

+/- 6,000/sf HVAC Warehouse with 20' to 40' Bay Height

+/- 8,500/sf HVAC Warehouse (+/- 7,000/sf High Bay, 40' Ceiling Height

+/- 1,500/sf 20' Ceiling Height)

+/- 23,500/sf of Office Space Configured As:

+/- 10,000/sf First Floor General Office Space

+/- 13,500/sf Second Floor Offices with Separate Atrium Entrance

Completely Remodeled, Paint and Flooring

Multiple Offices and Large Open Work Areas

BRIAN L. LIGHTLE, CCIM, SIOR, CRE

Founder | Broker Associate
321.863.3228
brian@teamlbr.com

Lightle Beckner Robison, Inc.

321.722.0707 • teamlbr.com
70 W. Hibiscus Blvd.,
Melbourne, FL 32901

Information contained herein has been obtained through sources deemed reliable but cannot be guaranteed as to its accuracy. A purchaser or lessee is expected to verify all information to his/her own satisfaction. Zoning information subject to change and not warranted. Always confirm current requirements with local governing agencies.

ADDITIONAL PHOTOS

Warehouse / Manufacturing Complex on 5.57 Acre Lot • 7750 9th St. SW Vero Beach, FL 32968



BRIAN L. LIGHTLE, CCIM, SIOR, CRE

Founder | Broker Associate
321.863.3228
brian@teamlbr.com

Information contained herein has been obtained through sources deemed reliable but cannot be guaranteed as to its accuracy. A purchaser or lessee is expected to verify all information to his/her own satisfaction. Zoning information subject to change and not warranted. Always confirm current requirements with local governing agencies.

Lightle Beckner Robison, Inc.

321.722.0707 • teamlbr.com
70 W. Hibiscus Blvd.,
Melbourne, FL 32901

Warehouse / Manufacturing Complex on 5.57 Acre Lot • 7750 9th St. SW Vero Beach,
FL 32968



BRIAN L. LIGHTLE, CCIM, SIOR, CRE

Founder | Broker Associate
321.863.3228
brian@teamlbr.com

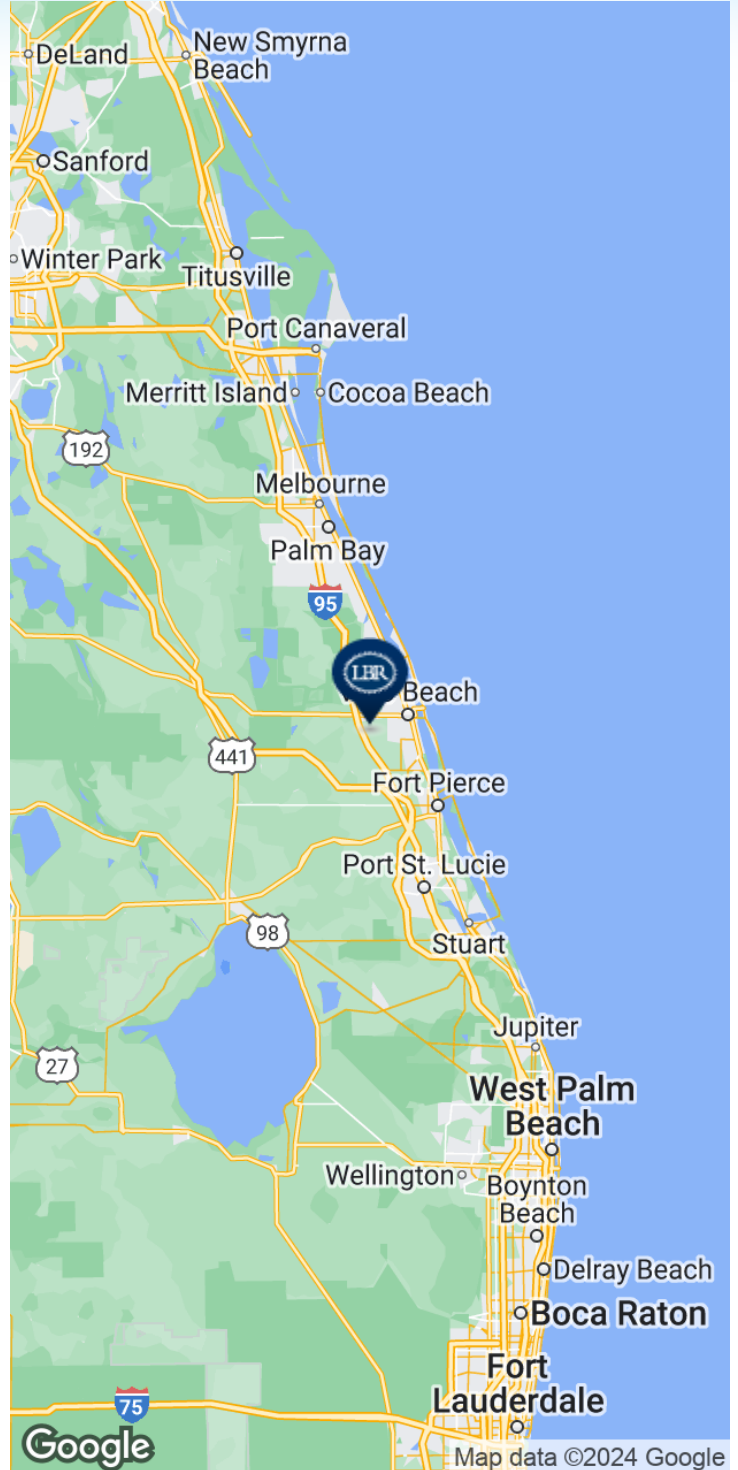
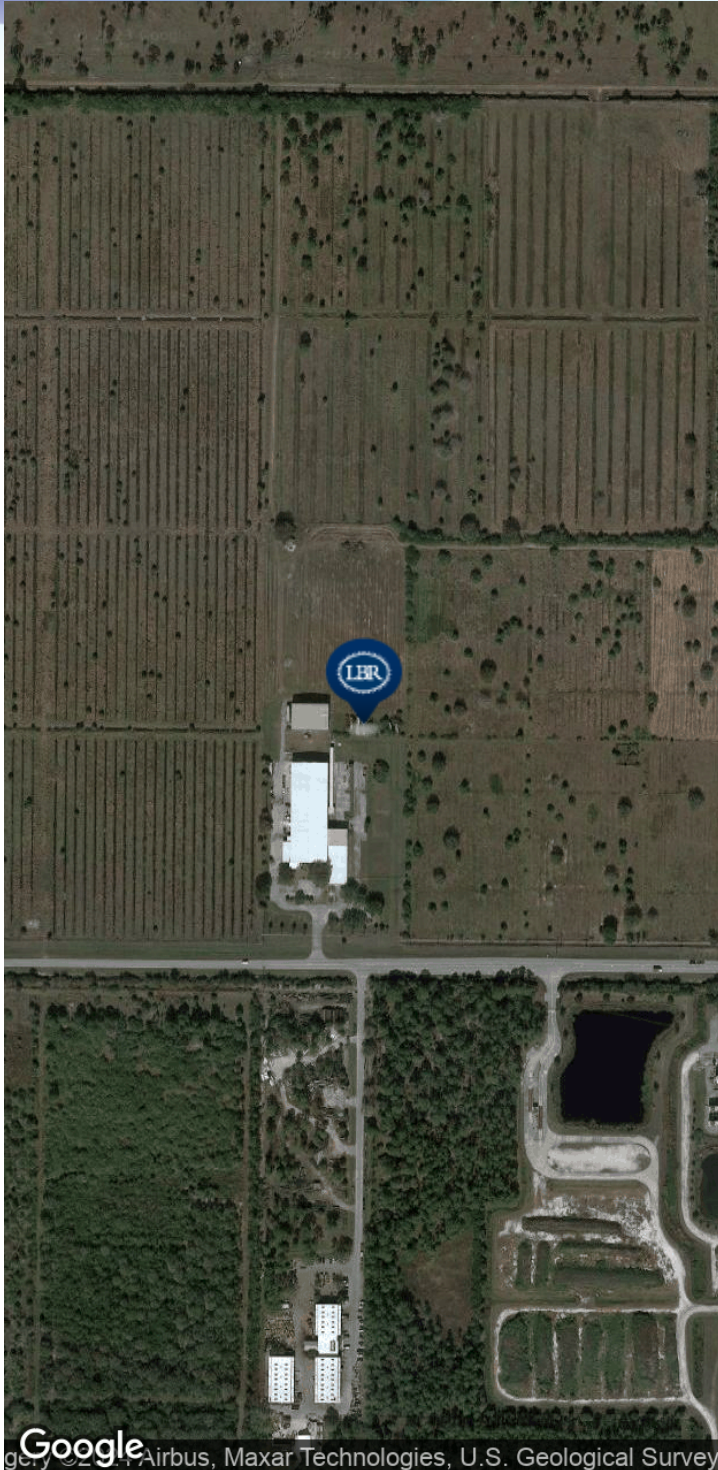
Information contained herein has been obtained through sources deemed reliable but cannot be guaranteed as to its accuracy. A purchaser or lessee is expected to verify all information to his/her own satisfaction. Zoning information subject to change and not warranted. Always confirm current requirements with local governing agencies.

Lightle Beckner Robison, Inc.

321.722.0707 • teamlbr.com
70 W. Hibiscus Blvd.,
Melbourne, FL 32901

LOCATION MAP

Warehouse / Manufacturing Complex on 5.57 Acre Lot • 7750 9th St. SW Vero Beach, FL 32968



BRIAN L. LIGHTLE, CCIM, SIOR, CRE

Founder | Broker Associate
321.863.3228
brian@teamlbr.com

Lightle Beckner Robison, Inc.

321.722.0707 • teamlbr.com
70 W. Hibiscus Blvd.,
Melbourne, FL 32901

Information contained herein has been obtained through sources deemed reliable but cannot be guaranteed as to its accuracy. A purchaser or lessee is expected to verify all information to his/her own satisfaction. Zoning information subject to change and not warranted. Always confirm current requirements with local governing agencies.