

Available for Lease  
**Gwynedd Corporate Center**  
1120 Welsh Road | North Wales, PA  
Suite 170 | 6,583 SF

SEE IT IN

3-D!



CLICK HERE FOR A  
VIRTUAL TOUR

For more information:

**Zena Charokopos**

+1 215 396 2900 ext 103  
zena.charokopos@naimertz.com

**John Adderly**

+1 856 335 1080  
john.adderly@naimertz.com

**Lisa Madzin**

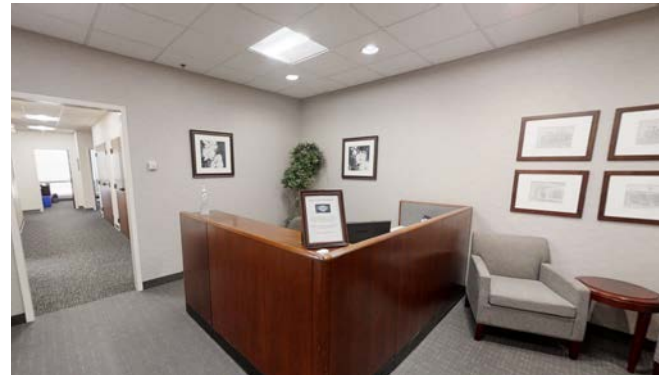
+1 215 396 2900 ext 106  
lisa.madzin@naimertz.com

**Scott Mertz, SIOR**

+1 856 802 6529  
scott.mertz@naimertz.com

**Naimertz**

21 Roland Avenue | Mount Laurel, NJ 08054  
+1 856 234 9600 | [naimertz.com](http://naimertz.com)



NO WARRANTY OR REPRESENTATION, EXPRESS OR IMPLIED, IS MADE AS TO THE ACCURACY OF THE INFORMATION CONTAINED HEREIN, AND THE SAME IS SUBMITTED SUBJECT TO ERRORS, OMISSIONS, CHANGE OF PRICE, RENTAL OR OTHER CONDITIONS, PRIOR SALE, LEASE OR FINANCING, OR WITHDRAWAL WITHOUT NOTICE, AND OF ANY SPECIAL LISTING CONDITIONS IMPOSED BY OUR PRINCIPALS NO WARRANTIES OR REPRESENTATIONS ARE MADE AS TO THE CONDITION OF THE PROPERTY OR ANY HAZARDS CONTAINED THEREIN ARE ANY TO BE IMPLIED.



Available for Lease

Gwynedd Corporate Center | 1120 Welsh Road | North Wales, PA

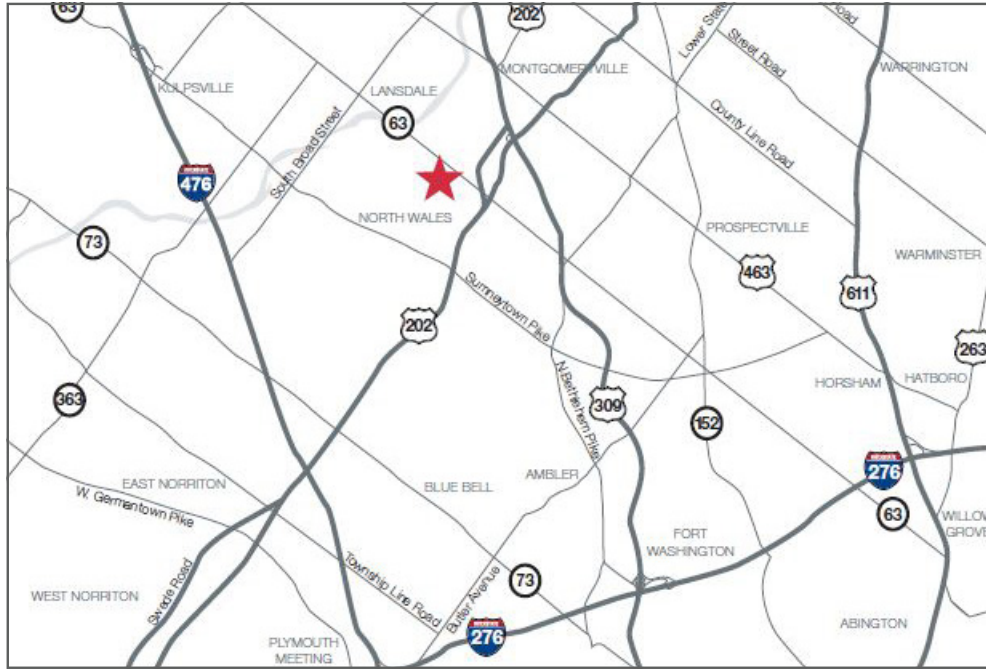
Suite 170 | 6,583 SF

**Naimertz**

21 Roland Avenue | Mount Laurel, NJ 08054  
+1 856 234 9600 | [naimertz.com](http://naimertz.com)

## Location Information

- Conveniently located on Route 63 (Welsh Road) at North Wales Road. Minutes from the center of Lansdale
- 1 mile from Route 202, and 4 ½ miles from the Lansdale interchange of the Pennsylvania Turnpike.
- 8 miles from the Fort Washington Exit of the PA Turnpike via the Fort Washington Expressway (Route 309)
- Bus stop within walking distance at corner of Welsh Road & N Wales Road.
- 1.5 miles to Pennbrook SEPTA station.



SEE IT IN  
**3-D!**



**CLICK HERE FOR A  
VIRTUAL TOUR**

NO WARRANTY OR REPRESENTATION, EXPRESS OR IMPLIED, IS MADE AS TO THE ACCURACY OF THE INFORMATION CONTAINED HEREIN, AND THE SAME IS SUBMITTED SUBJECT TO ERRORS, OMISSIONS, CHANGE OF PRICE, RENTAL OR OTHER CONDITIONS, PRIOR SALE, LEASE OR FINANCING, OR WITHDRAWAL WITHOUT NOTICE, AND OF ANY SPECIAL LISTING CONDITIONS IMPOSED BY OUR PRINCIPALS NO WARRANTIES OR REPRESENTATIONS ARE MADE AS TO THE CONDITION OF THE PROPERTY OR ANY HAZARDS CONTAINED THEREIN ARE ANY TO BE IMPLIED.

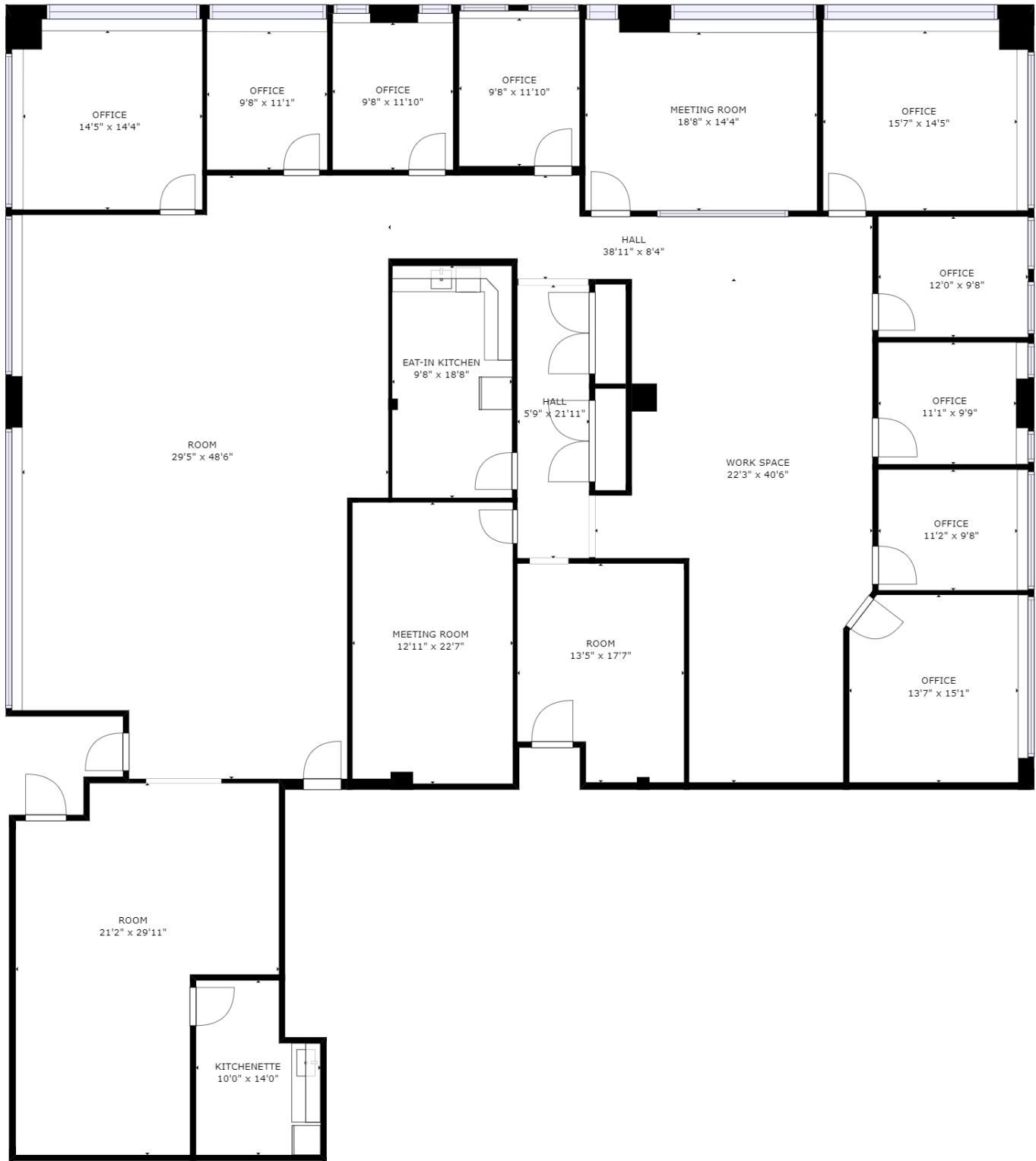
Available for Lease

Gwynedd Corporate Center | 1120 Welsh Road | North Wales, PA

FLOORPLAN Suite 170 | 6,583 SF



21 Roland Avenue | Mount Laurel, NJ 08054  
+1 856 234 9600 | [naimertz.com](http://naimertz.com)



FLOOR 1

NO WARRANTY OR REPRESENTATION, EXPRESS OR IMPLIED, IS MADE AS TO THE ACCURACY OF THE INFORMATION CONTAINED HEREIN, AND THE SAME IS SUBMITTED SUBJECT TO ERRORS, OMISSIONS, CHANGE OF PRICE, RENTAL OR OTHER CONDITIONS, PRIOR SALE, LEASE OR FINANCING, OR WITHDRAWAL WITHOUT NOTICE, AND OF ANY SPECIAL LISTING CONDITIONS IMPOSED BY OUR PRINCIPALS NO WARRANTIES OR REPRESENTATIONS ARE MADE AS TO THE CONDITION OF THE PROPERTY OR ANY HAZARDS CONTAINED THEREIN ARE ANY TO BE IMPLIED.