

# 1,950 SF KINGS COUNTRY PLAZA



## FOR LEASE

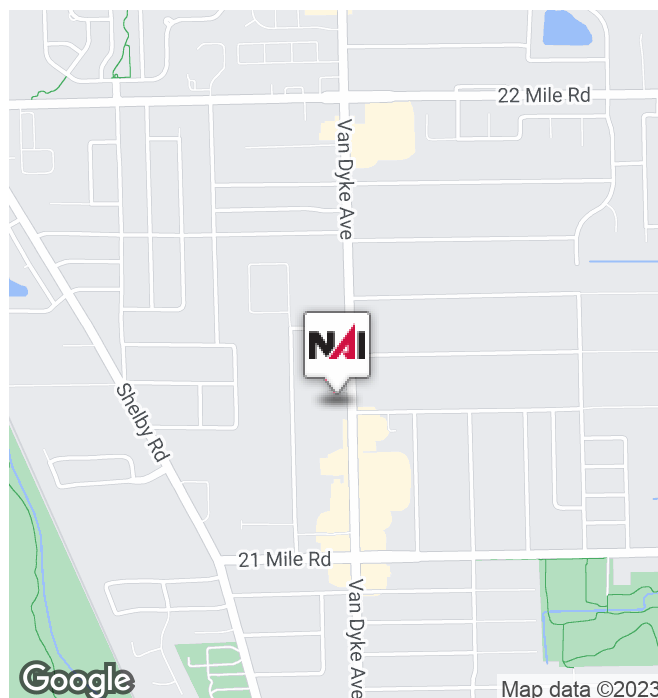


## 47591-47653 Van Dyke Ave

Shelby Township, Michigan 48317

### Property Highlights

- One Vacancy Left - 1,950 SF
- Well Designed Neighborhood Shopping Center
- Excellent Visibility with 156' of Frontage on Van Dyke Avenue
- Ample Parking in Front of Attractive Retail Units
- 2 Curb Cuts into Plaza
- Façade Upgrades
- Join Great Clips, Benjamin Moore Paints and Battery Warehouse
- Surrounding Tenants Include Subway, AT&T, Tim Hortons, Taco Bell, ALDI & O'Reilly Auto Parts
- Zoned C-2 Linear Retail



**NAI Farbman**

Commercial Real Estate Services, Worldwide.

[www.naifarbman.com](http://www.naifarbman.com)

**Carrie Weiss**

Vice President | 248.351.6328  
[weiss@farbman.com](mailto:weiss@farbman.com)

**Erik Lawshe**

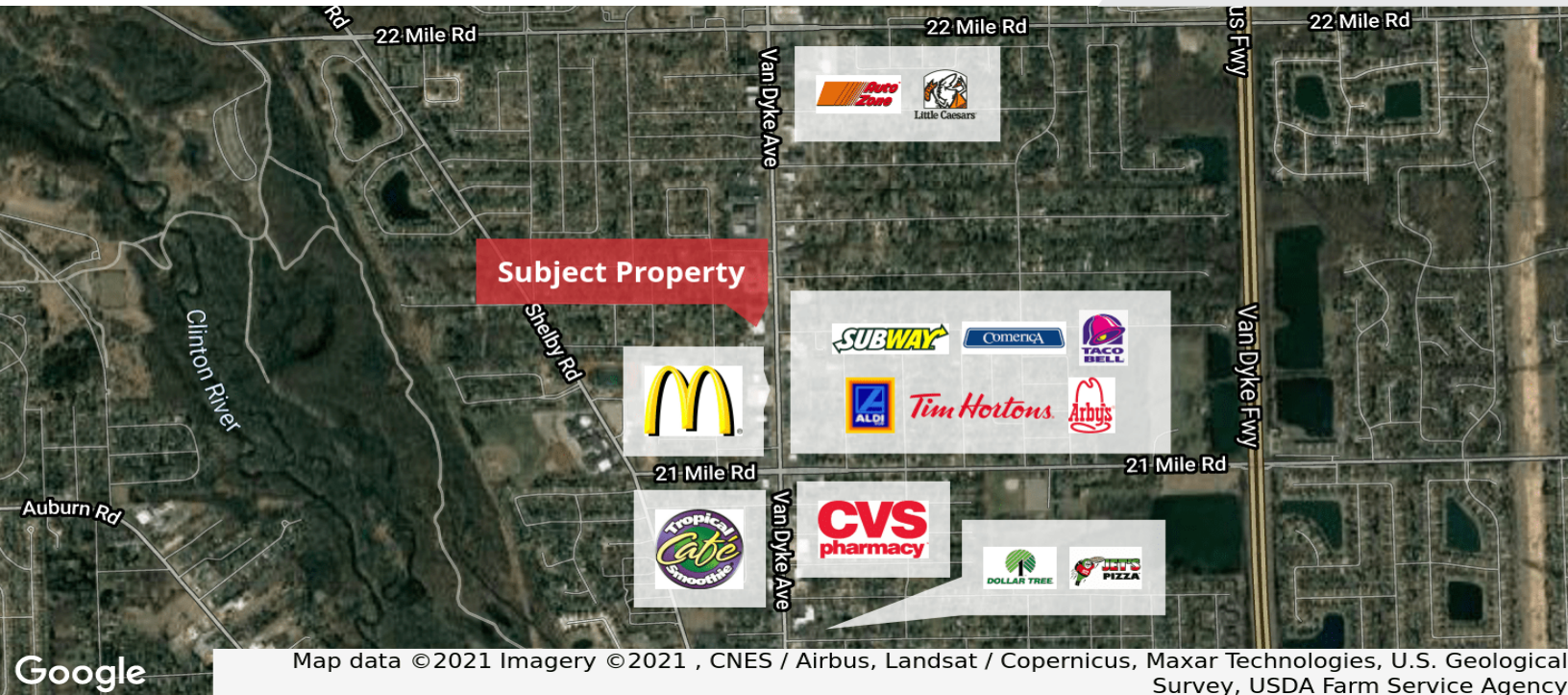
Sales Associate | 248.351.6333  
[lawshe@farbman.com](mailto:lawshe@farbman.com)

NO WARRANTY, EXPRESS OR IMPLIED, IS MADE AS TO THE ACCURACY OF THE INFORMATION CONTAINED HEREIN. THIS INFORMATION IS SUBMITTED SUBJECT TO ERRORS, OMISSIONS, CHANGE OF PRICE, RENTAL OR OTHER CONDITIONS, WITHDRAWAL WITHOUT NOTICE, AND IS SUBJECT TO ANY SPECIAL LISTING CONDITIONS IMPOSED BY OUR PRINCIPALS. COOPERATING BROKERS, BUYERS, TENANTS AND OTHER PARTIES WHO RECEIVE THIS DOCUMENT SHOULD NOT RELY ON IT, BUT SHOULD USE IT AS A STARTING POINT OF ANALYSIS, AND SHOULD INDEPENDENTLY CONFIRM THE ACCURACY OF THE INFORMATION CONTAINED HEREIN THROUGH A DUE DILIGENCE REVIEW OF THE BOOKS, RECORDS, FILES AND DOCUMENTS THAT CONSTITUTE RELIABLE SOURCES OF THE INFORMATION DESCRIBED HEREIN. LOGOS ARE FOR IDENTIFICATION PURPOSES ONLY AND MAY BE TRADEMARKS OF THEIR RESPECTIVE COMPANIES. NAI Farbman, INC. CA BRE LIC. #01990696.

# 1,950 SF KINGS COUNTRY PLAZA



## FOR LEASE



### DEMOGRAPHICS

	1 MILE	3 MILES	5 MILES
Total population	5,612	64,952	198,122
Median age	40.4	38.5	39.2
Median age (Male)	37.0	36.8	37.5
Median age (Female)	43.7	40.2	40.7
Total households	2,177	25,590	76,146
Total persons per HH	2.6	2.5	2.6
Average HH income	\$76,259	\$69,621	\$74,700
Average house value	\$162,947	\$201,071	\$202,450

### TRAFFIC COUNTS

Van Dyke & Saint John	31,618
Van Dyke Ave & Pacton Dr	28,891
Van Dyke Ave & Speedway Dr	28,250



Commercial Real Estate Services, Worldwide.  
www.naifarbman.com

**Carrie Weiss**

Vice President | 248.351.6328  
weiss@farbman.com

**Erik Lawshe**

Sales Associate | 248.351.6333  
lawshe@farbman.com

NO WARRANTY, EXPRESS OR IMPLIED, IS MADE AS TO THE ACCURACY OF THE INFORMATION CONTAINED HEREIN. THIS INFORMATION IS SUBMITTED SUBJECT TO ERRORS, OMISSIONS, CHANGE OF PRICE, RENTAL OR OTHER CONDITIONS, WITHDRAWAL WITHOUT NOTICE, AND IS SUBJECT TO ANY SPECIAL LISTING CONDITIONS IMPOSED BY OUR PRINCIPALS. COOPERATING BROKERS, BUYERS, TENANTS AND OTHER PARTIES WHO RECEIVE THIS DOCUMENT SHOULD NOT RELY ON IT, BUT SHOULD USE IT AS A STARTING POINT OF ANALYSIS, AND SHOULD INDEPENDENTLY CONFIRM THE ACCURACY OF THE INFORMATION CONTAINED HEREIN THROUGH A DUE DILIGENCE REVIEW OF THE BOOKS, RECORDS, FILES AND DOCUMENTS THAT CONSTITUTE RELIABLE SOURCES OF THE INFORMATION DESCRIBED HEREIN. LOGOS ARE FOR IDENTIFICATION PURPOSES ONLY AND MAY BE TRADEMARKS OF THEIR RESPECTIVE COMPANIES. NAI Farbman, INC. CA BRE LIC. #01990696.

# 1,950 SF KINGS COUNTRY PLAZA



## FOR LEASE



Commercial Real Estate Services, Worldwide.  
[www.naifarbman.com](http://www.naifarbman.com)

### Carrie Weiss

Vice President | 248.351.6328  
[weiss@farbman.com](mailto:weiss@farbman.com)

### Erik Lawshe

Sales Associate | 248.351.6333  
[lawshe@farbman.com](mailto:lawshe@farbman.com)

NO WARRANTY, EXPRESS OR IMPLIED, IS MADE AS TO THE ACCURACY OF THE INFORMATION CONTAINED HEREIN. THIS INFORMATION IS SUBMITTED SUBJECT TO ERRORS, OMISSIONS, CHANGE OF PRICE, RENTAL OR OTHER CONDITIONS, WITHDRAWAL WITHOUT NOTICE, AND IS SUBJECT TO ANY SPECIAL LISTING CONDITIONS IMPOSED BY OUR PRINCIPALS. COOPERATING BROKERS, BUYERS, TENANTS AND OTHER PARTIES WHO RECEIVE THIS DOCUMENT SHOULD NOT RELY ON IT, BUT SHOULD USE IT AS A STARTING POINT OF ANALYSIS, AND SHOULD INDEPENDENTLY CONFIRM THE ACCURACY OF THE INFORMATION CONTAINED HEREIN THROUGH A DUE DILIGENCE REVIEW OF THE BOOKS, RECORDS, FILES AND DOCUMENTS THAT CONSTITUTE RELIABLE SOURCES OF THE INFORMATION DESCRIBED HEREIN. LOGOS ARE FOR IDENTIFICATION PURPOSES ONLY AND MAY BE TRADEMARKS OF THEIR RESPECTIVE COMPANIES. NAI Farbman, INC. CA BRE LIC. #01990696.