

FOR LEASE

CLASS A GARDEN OFFICE -STONEWOOD OFFICE PARK

5621 114th Street , Lubbock, TX 79424



OFFERING SUMMARY

AVAILABLE SF:	
LEASE RATE:	N/A
LOT SIZE:	27,087 Acres
BUILDING SIZE:	1,236 SF
ZONING:	GO

KW COMMERCIAL
10210 Quaker Avenue
Lubbock , TX 79424

LEIGH ANNE DUNLAP, CCIM
Commercial Agent
O: 806.577.5986
C: 806.577.5986
leighannedunlap@gmail.com
TX #0595762

PROPERTY OVERVIEW

Beautiful Class A Garden office in growing South Lubbock for lease. This space offers 1,236 SF of space featuring 6 large offices, conference room, reception area, breakroom that can accommodate full size refrigerator, ADA restroom, and ample parking Located in new Stonewood office park this site offers 114th Street frontage.

PROPERTY HIGHLIGHTS

- 114th Street Frontage
- Ample Parking
- Newer Construction

We obtained the information above from sources we believe to be reliable. However, we have not verified its accuracy and make no guarantee, warranty or representation about it. It is submitted subject to the possibility of errors, omissions, change of price, rental or other conditions, prior sale, lease or financing, or withdrawal without notice. We include projections, opinions, assumptions or estimates for example only, and they may not represent current or future performance of the property. You and your tax and legal advisors should conduct your own investigation of the property and transaction.

Each Office Independently Owned and Operated

PROPERTY PHOTOS

CLASS A GARDEN OFFICE -STONEWOOD OFFICE PARK

5621 114th Street , Lubbock, TX 79424

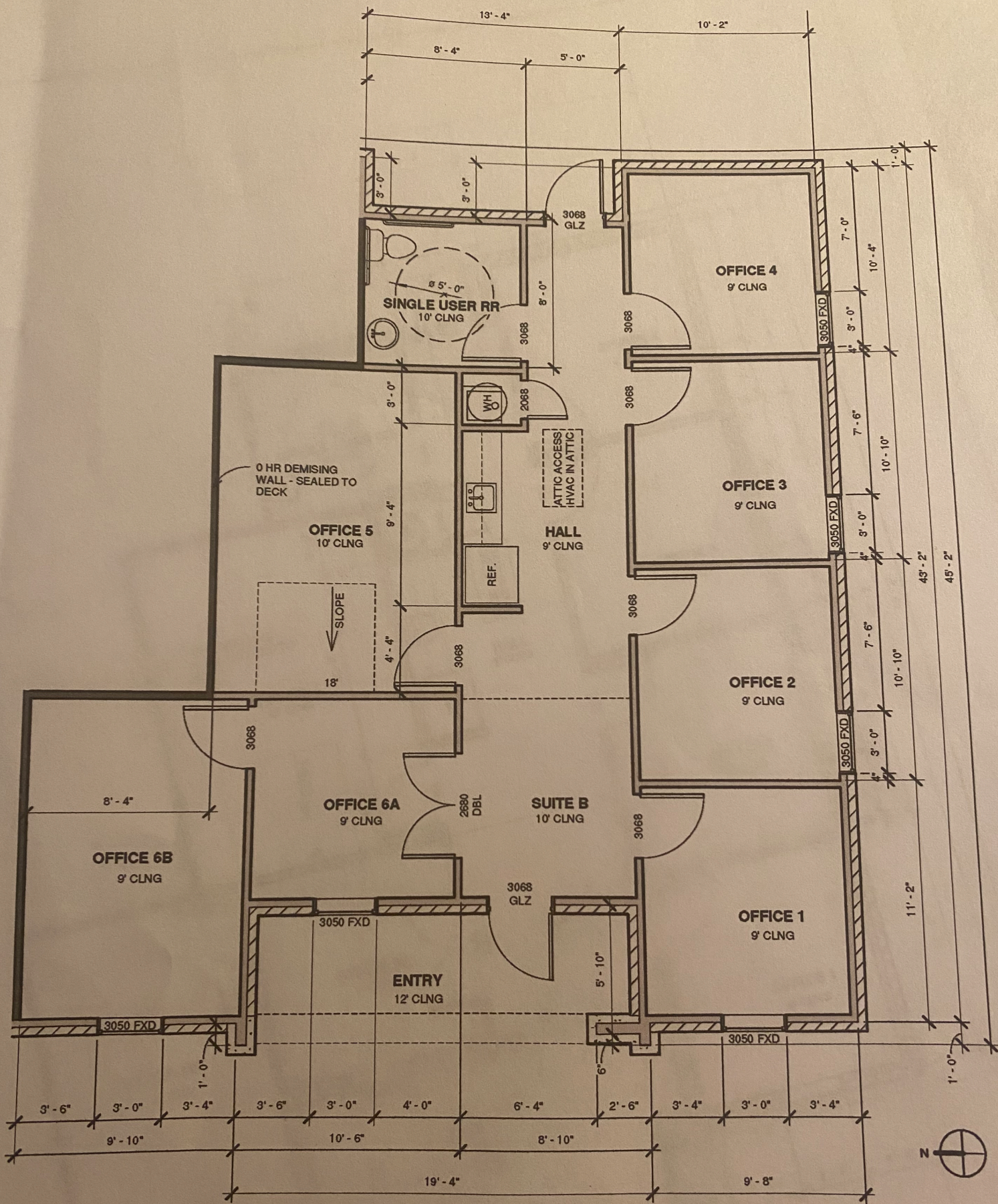


KW COMMERCIAL
10210 Quaker Avenue
Lubbock , TX 79424

LEIGH ANNE DUNLAP, CCIM
Commercial Agent
O: 806.577.5986
C: 806.577.5986
leighannedunlap@gmail.com
TX #0595762

We obtained the information above from sources we believe to be reliable. However, we have not verified its accuracy and make no guarantee, warranty or representation about it. It is submitted subject to the possibility of errors, omissions, change of price, rental or other conditions, prior sale, lease or financing, or withdrawal without notice. We include projections, opinions, assumptions or estimates for example only, and they may not represent current or future performance of the property. You and your tax and legal advisors should conduct your own investigation of the property and transaction.

Each Office Independently Owned and Operated



Garden Office Lease Space

5621 114th Street

LOCATION MAPS

CLASS A GARDEN OFFICE -STONEWOOD OFFICE PARK

5621 114th Street , Lubbock, TX 79424

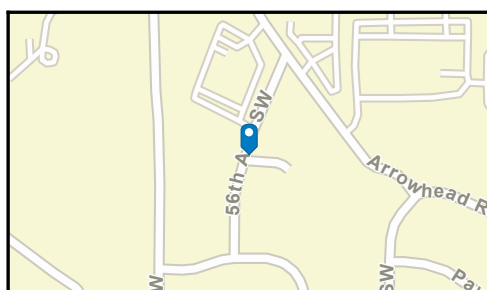
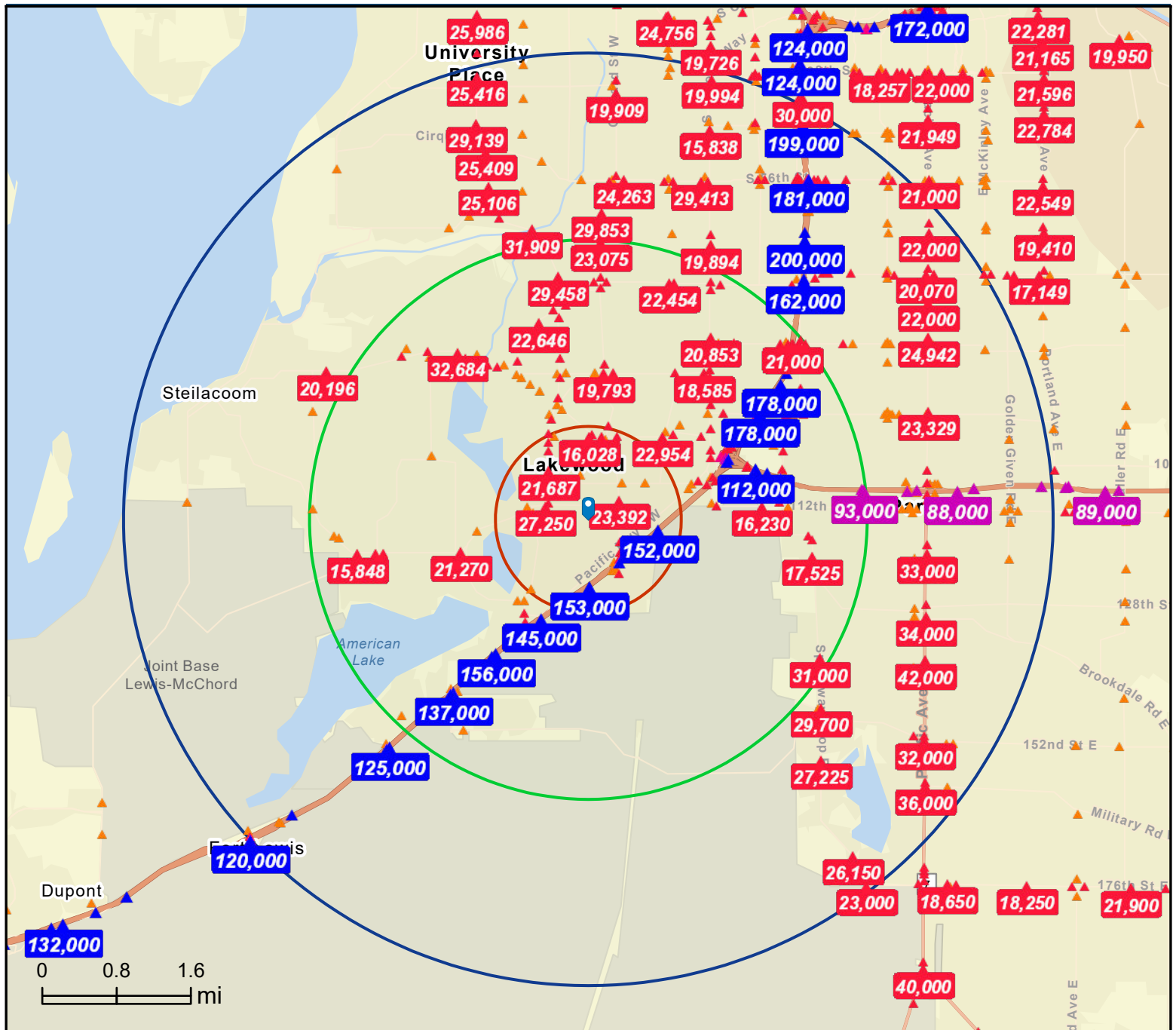


KW COMMERCIAL
10210 Quaker Avenue
Lubbock , TX 79424

LEIGH ANNE DUNLAP, CCIM
Commercial Agent
O: 806.577.5986
C: 806.577.5986
leighannedunlap@gmail.com
TX #0595762

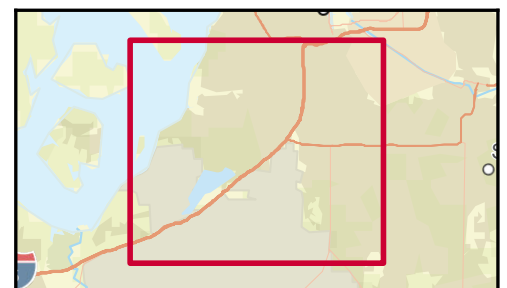
We obtained the information above from sources we believe to be reliable. However, we have not verified its accuracy and make no guarantee, warranty or representation about it. It is submitted subject to the possibility of errors, omissions, change of price, rental or other conditions, prior sale, lease or financing, or withdrawal without notice. We include projections, opinions, assumptions or estimates for example only, and they may not represent current or future performance of the property. You and your tax and legal advisors should conduct your own investigation of the property and transaction.

Each Office Independently Owned and Operated



Average Daily Traffic Volume

- ▲ Up to 6,000 vehicles per day
- ▲ 6,001 - 15,000
- ▲ 15,001 - 30,000
- ▲ 30,001 - 50,000
- ▲ 50,001 - 100,000
- ▲ More than 100,000 per day



Source: ©2020 Kalibrate Technologies (Q4 2020).