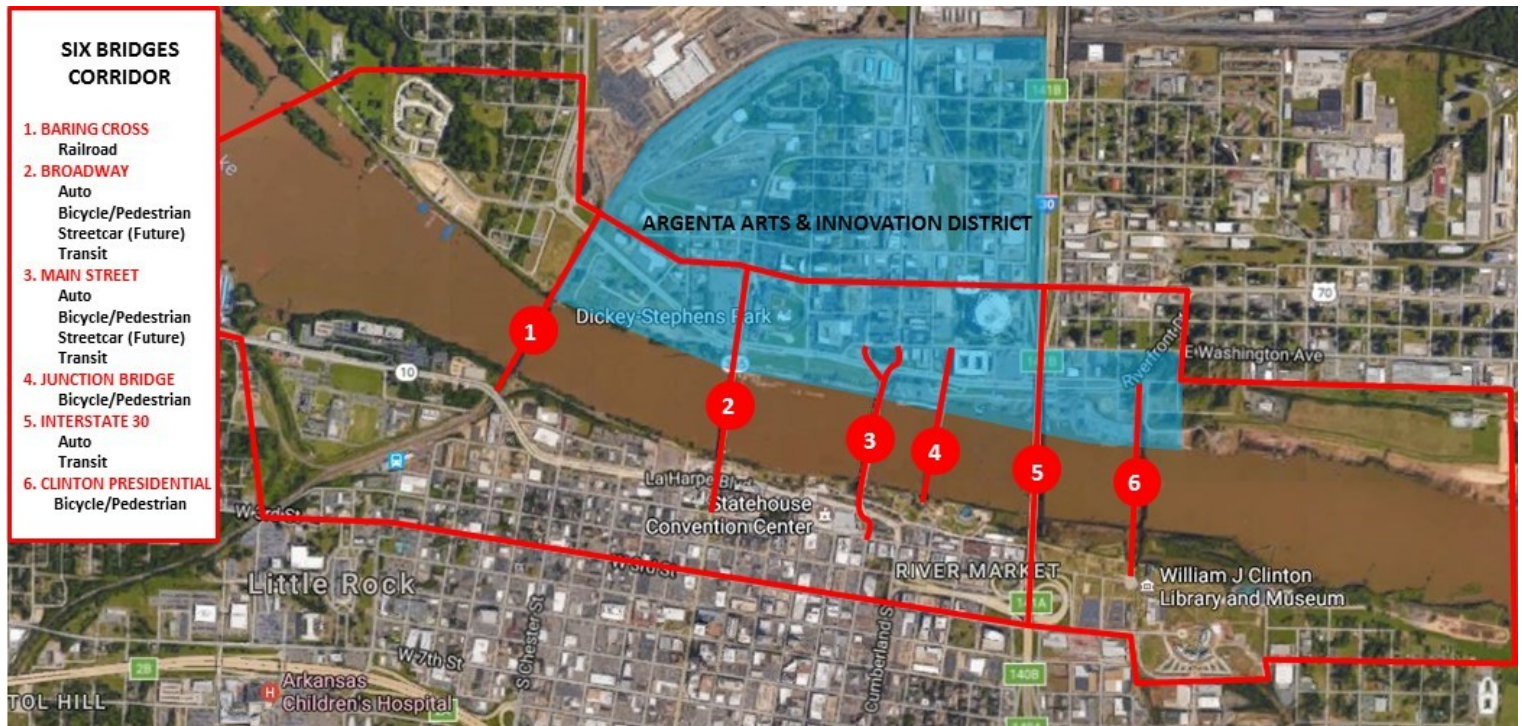


DOWNTOWN LITTLE ROCK - NORTH LITTLE ROCK

SIX BRIDGES CORRIDOR

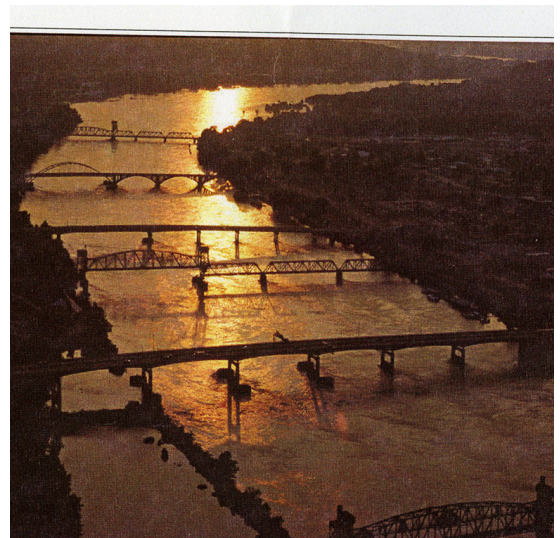
SIX BRIDGES LINKING BOTH SIDES OF THE ARKANSAS RIVER



Six Bridges Corridor and the 6 Bridges in Red and the Argenta Arts & Innovation District in Blue



View of Downtown Little Rock - North Little Rock looking West

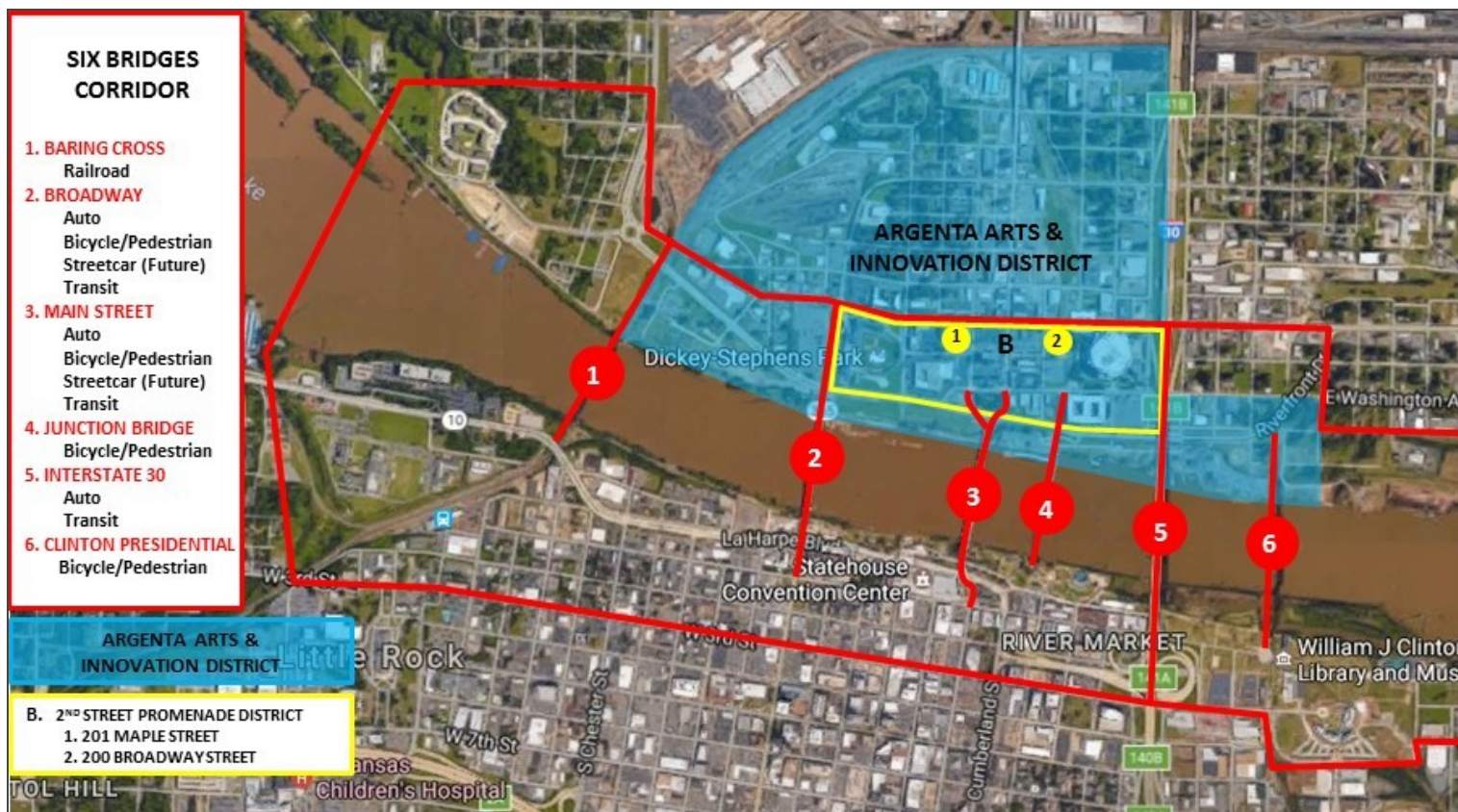


Six Bridges at Sunset

Greg Nabholz, CCIM Senior Managing Director 501.329.4468 gnabholz@newmarkmtp.com

2ND STREET PROMENADE DISTRICT AREA MAP

ARGENTA ARTS & INNOVATION DISTRICT - NORTH LITTLE ROCK, AR



Greg Nabholz, CCIM Senior Managing Director 501.329.4468 gnabholz@newmarkmtp.com

DOWNTOWN LITTLE ROCK - NORTH LITTLE ROCK SIX BRIDGES CORRIDOR

2ND STREET PROMENADE DISTRICT

ARGENTA ARTS & INNOVATION DISTRICT NORTH LITTLE ROCK, AR

2ND STREET PROMENADE DISTRICT

- District Boundary
- Promenade
- Promenade Connectors
- Available Properties
- SIX BRIDGES CORRIDOR CONNECTORS
- Arkansas River Trail
- Rock Region Metro Streetcar Stops
- Bridges

MAJOR ANCHORS

- Arkansas Boathouse Club
- Arkansas Inland Maritime Museum
- Arkansas Regional Innovation Hub
- Arkansas Sports Hall of Fame
- Dickey Stephens Park
- Verizon Arena
- Robinson Center
- Old Statehouse Museum
- Statehouse Convention Center
- Historic Arkansas Museum
- Central Arkansas Library System
- Arkansas Studies Institute
- First Security Amphitheater
- River Market
- Museum of Discovery
- Witt Stephens Nature Center
- Clinton Presidential Park



Greg Nabholz, CCIM Senior Managing Director 501.329.4468 gnabholz@newmarkmtp.com

DOWNTOWN LITTLE ROCK - NORTH LITTLE ROCK

MAJOR DESTINATION ANCHORS IN THE SIX BRIDGES CORRIDOR

2ND STREET PROMENADE - ARGENTA ARTS & INNOVATION DISTRICT



Arkansas River Trail



Dickey Stephens Park - Baseball Stadium



Arkansas Inland Maritime Museum



Arkansas Regional Innovation Hub



Arkansas Sports Hall of Fame Museum



Verizon Arena

Greg Nabholz, CCIM Senior Managing Director **501.329.4468** gnabholz@newmarkmtp.com

DOWNTOWN LITTLE ROCK - NORTH LITTLE ROCK

MAJOR DESTINATION ANCHORS IN THE SIX BRIDGES CORRIDOR

DOWNTOWN LITTLE ROCK



Clinton Presidential Center & Park



Heifer International Headquarters & Village



William E. "Bill" Clark Presidential Park Wetlands



Witt Stephens Jr. Nature Center



Museum of Discovery



Museum Center

Greg Nabholz, CCIM Senior Managing Director **501.329.4468** gnabholz@newmarkmtp.com

DOWNTOWN LITTLE ROCK - NORTH LITTLE ROCK

MAJOR DESTINATION ANCHORS IN THE SIX BRIDGES CORRIDOR

DOWNTOWN LITTLE ROCK



River Market



First Security Amphitheater



Central Arkansas Library



Arkansas Studies Institute



Historic Arkansas Museum



Statehouse Convention Center

Greg Nabholz, CCIM Senior Managing Director 501.329.4468 gnabholz@newmarkmtp.com

DOWNTOWN LITTLE ROCK - NORTH LITTLE ROCK

MAJOR DESTINATION ANCHORS IN THE SIX BRIDGES CORRIDOR

DOWNTOWN LITTLE ROCK



Statehouse Convention Center - H.U. Lee Gate & Garden



Old Statehouse Museum



Robinson Center



Robinson Center

Greg Nabholz, CCIM Senior Managing Director **501.329.4468** gnabholz@newmarkmtp.com

DOWNTOWN LITTLE ROCK - NORTH LITTLE ROCK SIX BRIDGES CORRIDOR

2ND STREET PROMENADE DISTRICT

ARGENTA ARTS & INNOVATION DISTRICT - NORTH LITTLE ROCK, AR



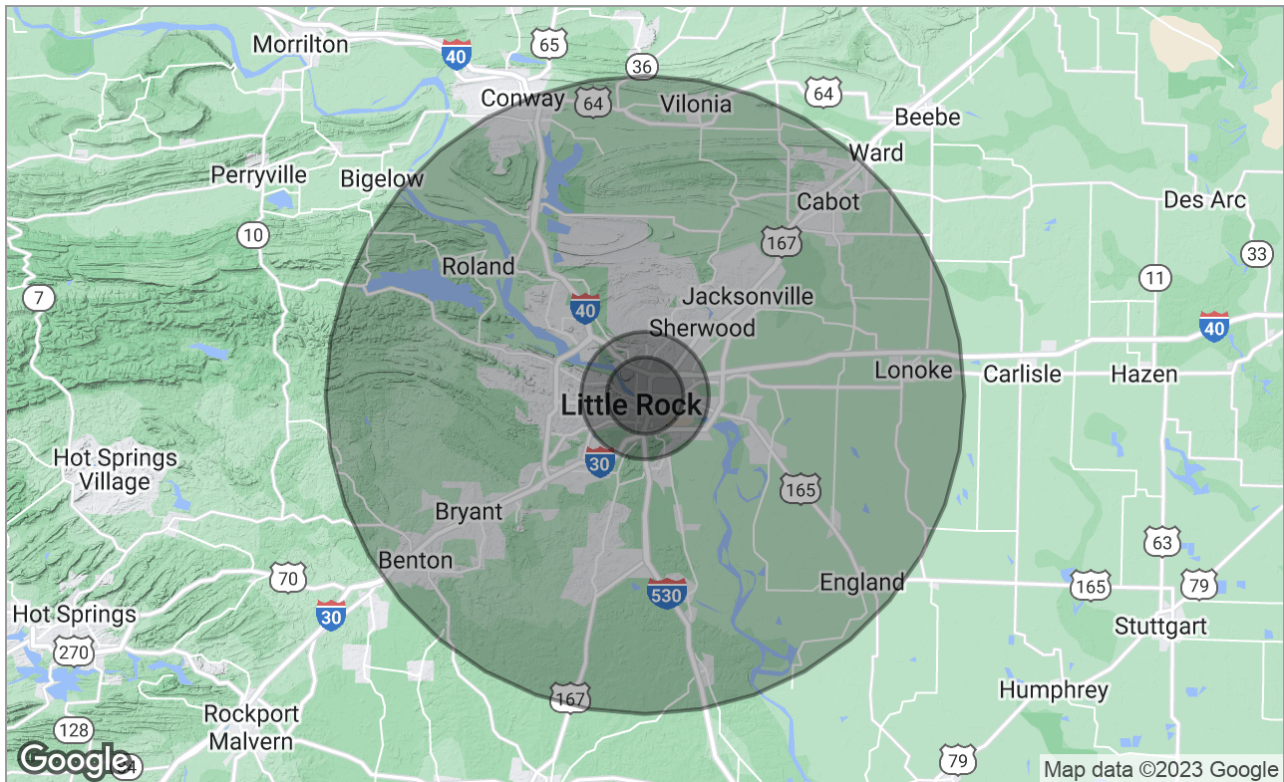
Looking Northeast: Broadway Bridge, Willow St., Main St. Bridge, Poplar St., Junction Bridge, I-30 Bridge (I to R)

Greg Nabholz, CCIM Senior Managing Director 501.329.4468 gnabholz@newmarkmtp.com

DOWNTOWN LITTLE ROCK - NORTH LITTLE ROCK

DESTINATION RETAIL & ENTERTAINMENT PRIMARY DRAW AREA

ARGENTA ARTS & INNOVATION DISTRICT - NORTH LITTLE ROCK, AR



Demographics Snapshot

	3 Miles	5 Miles	25 Miles
Total Population	50,305	122,096	630,135
Population Density	50,305	122,096	630,135
Median Age	37.0	37.2	36.0
Median Age (Male)	34.2	34.6	34.7
Median Age (Female)	39.2	39.3	37.2
Total Households	23,194	54,030	253,229
# of Persons Per HH	2.2	2.3	2.5
Average HH Income	\$43,929	\$53,889	\$63,511
Average House Value	\$164,069	\$158,387	\$168,024

Greg Nabholz, CCIM Senior Managing Director **501.329.4468** gnabholz@newmarkmtp.com

DOWNTOWN LITTLE ROCK - NORTH LITTLE ROCK SIX BRIDGES CORRIDOR

2ND STREET PROMENADE DISTRICT

ARGENTA ARTS & INNOVATION DISTRICT - NORTH LITTLE ROCK, AR



Looking North: Dickey Stephens Park, Wyndam Riverfront, US Bank, NLR City Services, Inland Maritime Museum, The Enclave, Verizon Arena (l to r)



Looking Northeast: Smarthouse Way, Dickey Stephens Park (l to r)

Greg Nabholz, CCIM Senior Managing Director 501.329.4468 gnabholz@newmarkmtp.com

DOWNTOWN LITTLE ROCK - NORTH LITTLE ROCK SIX BRIDGES CORRIDOR

2ND STREET PROMENADE DISTRICT

ARGENTA ARTS & INNOVATION DISTRICT - NORTH LITTLE ROCK, AR



Looking West: Ark. River Trail, Riverfront Dr., Washington St., 2nd St., Broadway St. (l to r)

Greg Nabholz, CCIM Senior Managing Director 501.329.4468 gnabholz@newmarkmtp.com

DOWNTOWN LITTLE ROCK - NORTH LITTLE ROCK SIX BRIDGES CORRIDOR

2ND STREET PROMENADE DISTRICT - BRIDGES AT NIGHT

ARGENTA ARTS & INNOVATION DISTRICT - NORTH LITTLE ROCK, AR



Fireworks Over the Bridges



Main Street Bridge



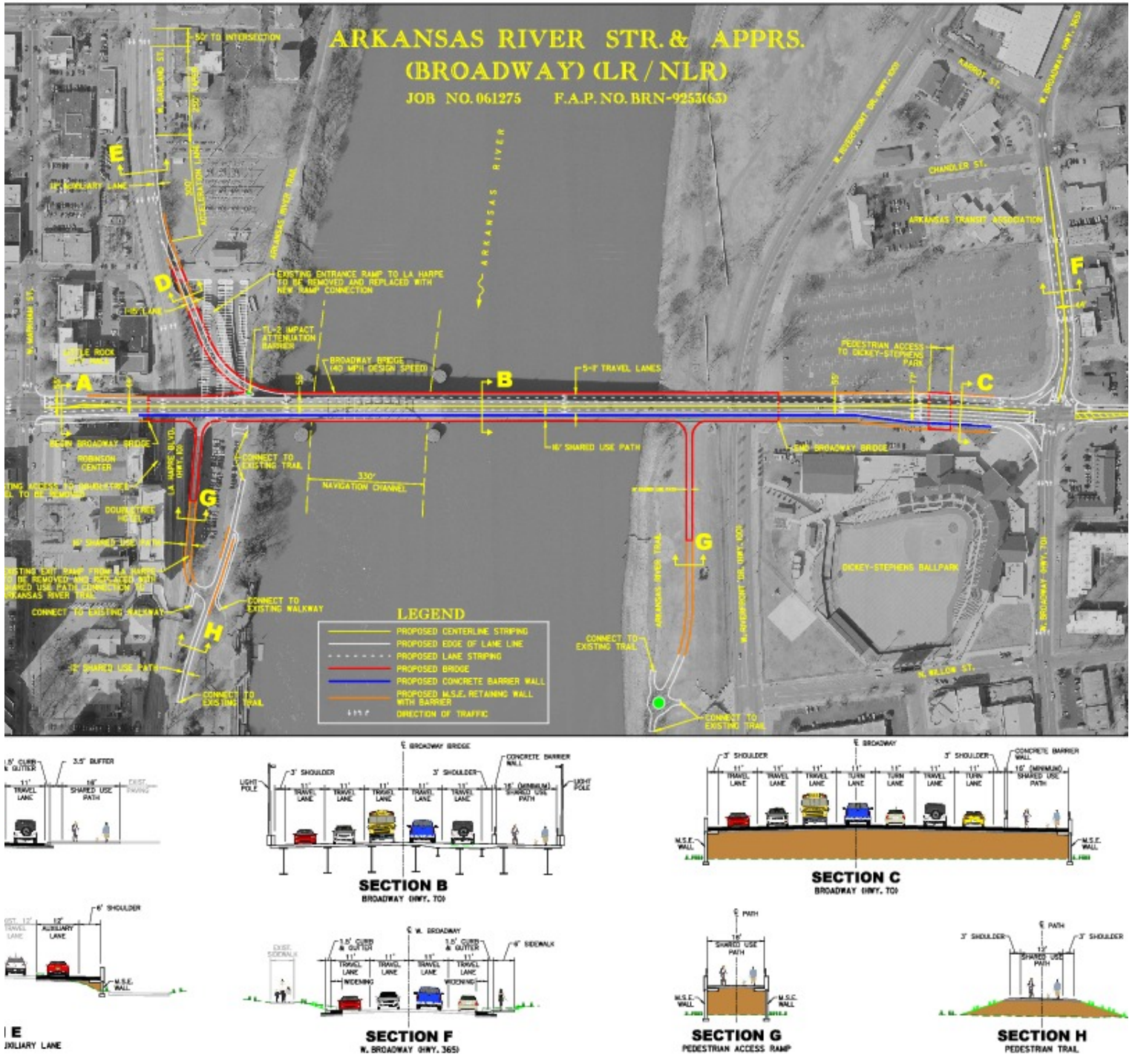
Junction Bridge



Clinton Presidential Park Bridge

Greg Nabholz, CCIM Senior Managing Director **501.329.4468** gnabholz@newmarkmtp.com

DOWNTOWN LITTLE ROCK - NORTH LITTLE ROCK SIX BRIDGES CORRIDOR BROADWAY BRIDGE REPLACEMENT PROJECT ARGENTA ARTS & INNOVATION DISTRICT - NORTH LITTLE ROCK, AR



Greg Nabholz, CCIM Senior Managing Director 501.329.4468 gnabholz@newmarkmtp.com

DOWNTOWN LITTLE ROCK - NORTH LITTLE ROCK SIX BRIDGES CORRIDOR

BROADWAY BRIDGE REPLACEMENT PROJECT

ARGENTA ARTS & INNOVATION DISTRICT - NORTH LITTLE ROCK, AR



Greg Nabholz, CCIM Senior Managing Director 501.329.4468 gnabholz@newmarkmtp.com

 **Newmark**
Moses Tucker Partners
www.newmarkmtp.com

Newmark Grubb Arkansas represents the owner of the property represented herein. Although all information furnished regarding property for sale, rental, or financing is from sources deemed reliable, such information has not been verified and no express representation is made nor is any to be implied as to the accuracy thereof and it is submitted subject to errors, omissions, change of price, rental or other conditions, prior sale, lease or financing, or withdrawal without notice.

200 River Market Avenue, Suite 501, Little Rock, AR 72201 | Main: 501.376.6555