

# NEWLY RENOVATED OFFICE



4501 E La Palma Avenue | Anaheim  
Office Building  
For Lease

A photograph of a modern office hallway with teal walls, framed abstract art, and a patterned carpet. A large red geometric shape is overlaid on the top left of the image.

## Building Summary

- Office Building located on corner of Lakeview & La Palma Avenue
- Asking \$2.10 PSF Full Service Gross
- New Drought Resistant Landscaping
- New Renovated Lobby, Corridors, and Restrooms
- Convenient Access to 91/55 Freeways
- Major Street Frontage
- Restaurants & Other Amenities Nearby
- 4:1 Parking (Free)



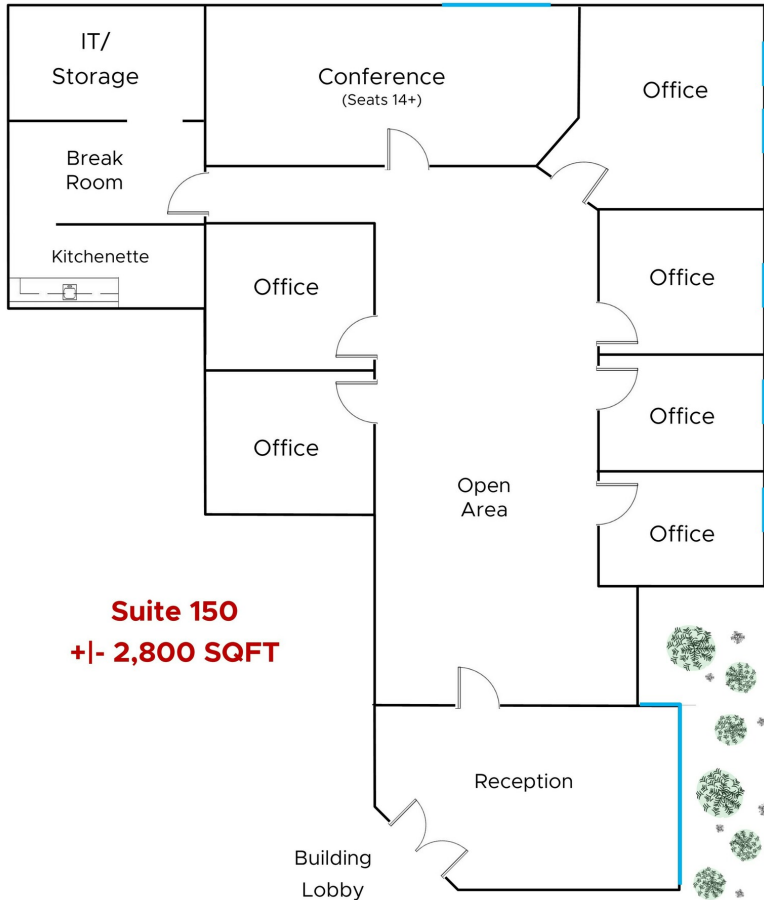


## Property Overview

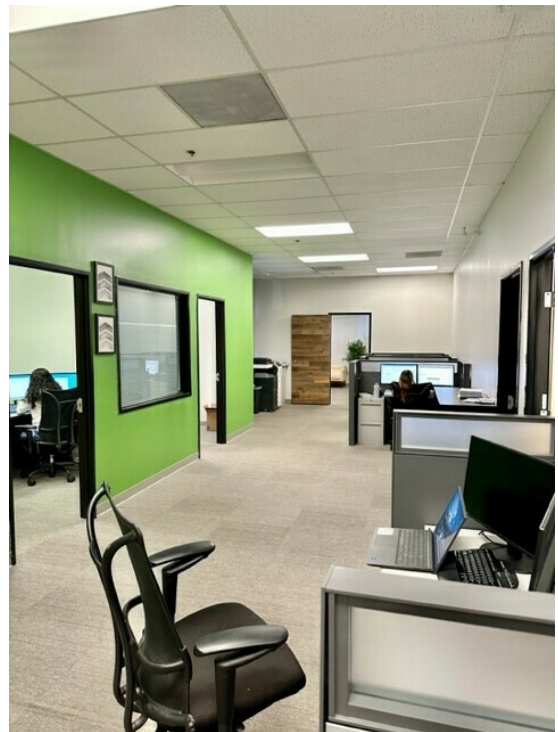
4501 E La Palma Anaheim is a newly renovated, two story office building ideally located on the corner of La Palma and Lakeview. The building features a newly renovated lobby, corridors, and restrooms. There is ample surface parking which wraps around the building. The building is located just off the 91 Freeway. Call to schedule a tour or for additional information.

# 4501 E LA PALMA ANAHEIM

## Floor Plan - Suite 150 +/- 2,800 Square Feet



\*Not to Scale



## Exclusive Agents

### MARSHAL VOGT

Principal  
714.564.7117  
mvogt@lee-associates.com  
CalDRE #01519213

### JAIMESON HEARNE

Principal  
714.564.7146  
jhearne@lee-associates.com  
CalDRE #01925107



All information contained herein has been provided by Lessor and/or third parties, but has not been independently verified by Lee & Associates or its agent(s). Lessee and interested parties should independently verify all information communicated by these sources.