



2870 Poplar Avenue

Memphis, Tennessee 38111

Property Features

- 6,300 SF Free-Standing Building
- .48 acres
- Price per SF: \$23.80 SF
- Built in 2018
- Divisible into multiple retail bays
- Prime Location on Poplar near major Medical Hub
- Sale Price: \$1,500,000



For more information:

Brian Califf, CCIM

901 526 3100 • bcaliff@saigcompany.com

NO WARRANTY OR REPRESENTATION, EXPRESS OR IMPLIED, IS MADE AS TO THE ACCURACY OF THE INFORMATION CONTAINED HEREIN, AND THE SAME IS SUBMITTED SUBJECT TO ERRORS, OMISSIONS, CHANGE OF PRICE, RENTAL OR OTHER CONDITIONS, PRIOR SALE, LEASE OR FINANCING, OR WITHDRAWAL WITHOUT NOTICE, AND OF ANY SPECIAL LISTING CONDITIONS IMPOSED BY OUR PRINCIPALS NO WARRANTIES OR REPRESENTATIONS ARE MADE AS TO THE CONDITION OF THE PROPERTY OR ANY HAZARDS CONTAINED THEREIN ARE ANY TO BE IMPLIED.

NAI Saig Company

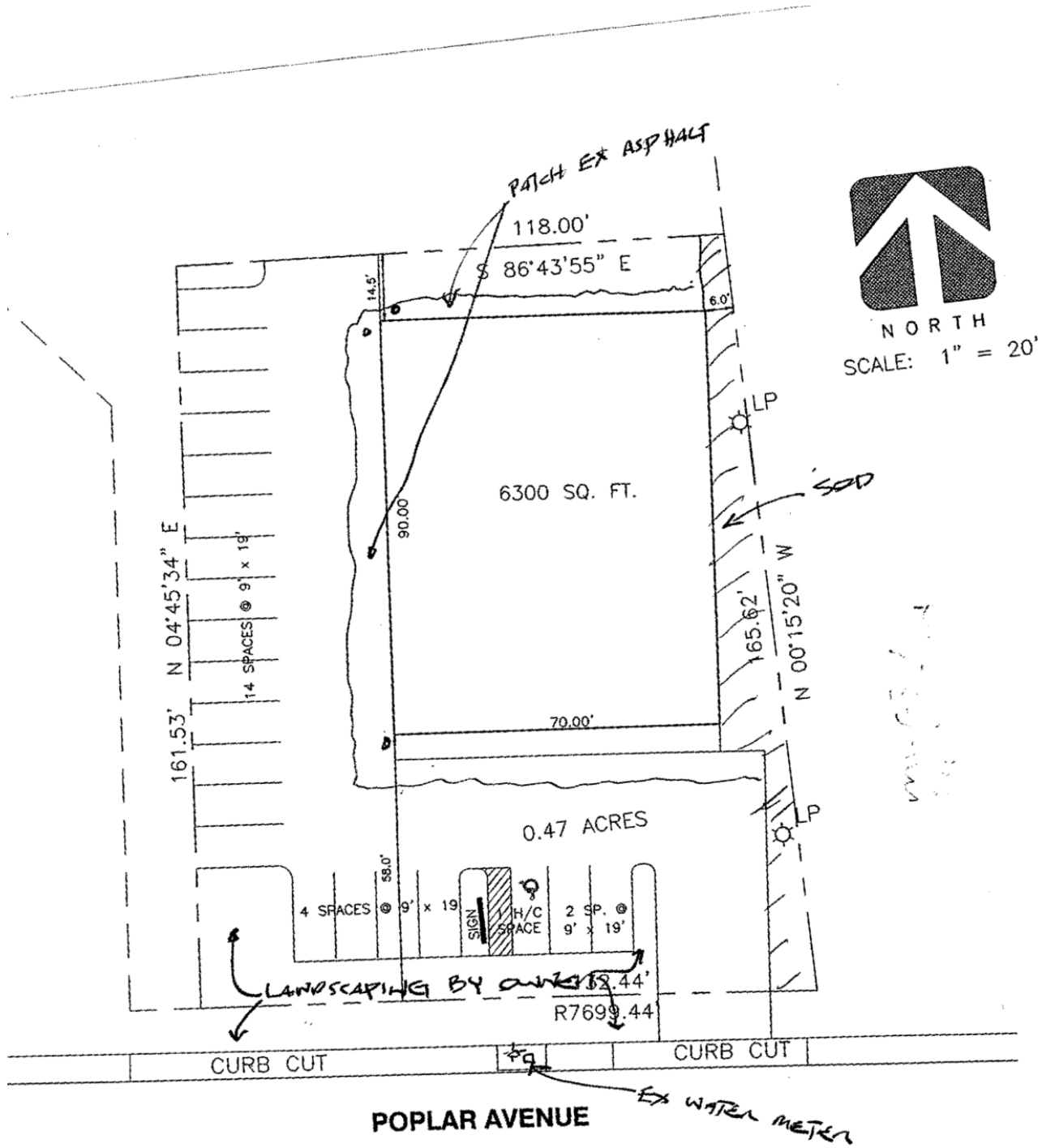
6263 Poplar Avenue Suite 150, Memphis, TN 38119

901 526 3100

saigcompany.com

For Sale or Lease

Retail



For Sale or For lease

Retail

