

FOR LEASE

ECHLYNN BUILDING

6520 212TH STREET SW, LYNNWOOD, WA 98036



OFFERING SUMMARY

Available SF:	1,816 SF
Lease Rate:	\$18.00 SF/month (NNN)
Year Built:	1977
Building Size:	8,100 SF
Zoning:	OB
Market:	Lynnwood

PROPERTY OVERVIEW

Two story office and industrial building with ample parking and easy access to many nearby amenities.

PROPERTY HIGHLIGHTS

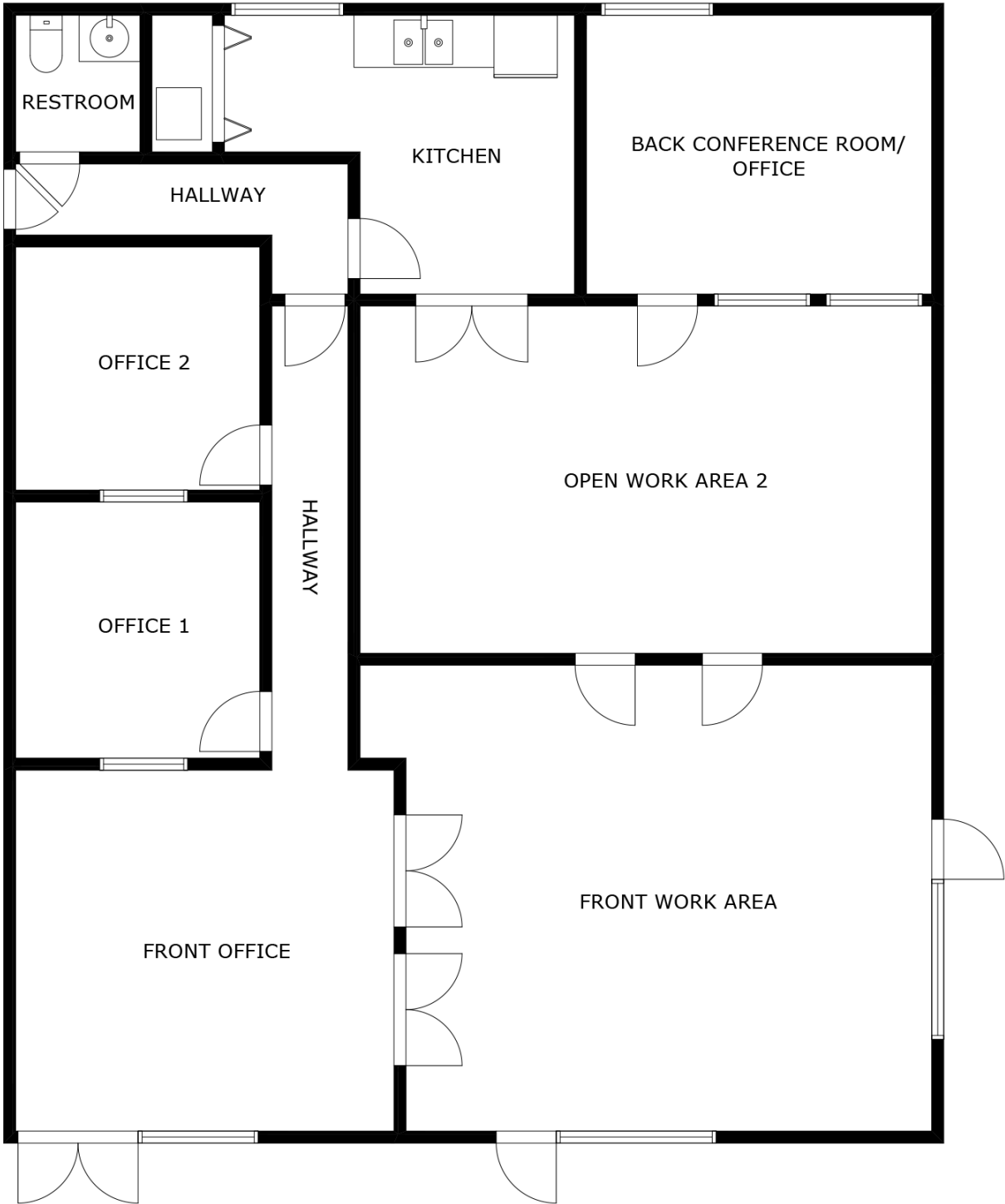
- Ample Parking
- Great Access to SR-99 & I-5
- Large Windows Provide Natural Light
- Restroom in Suite
- Well Maintained Building



DAVID HALL, CCIM, CPM CANDIDATE  
206.381.3883 x107  
david@corecommercialproperties.com

ECHLYNN BUILDING

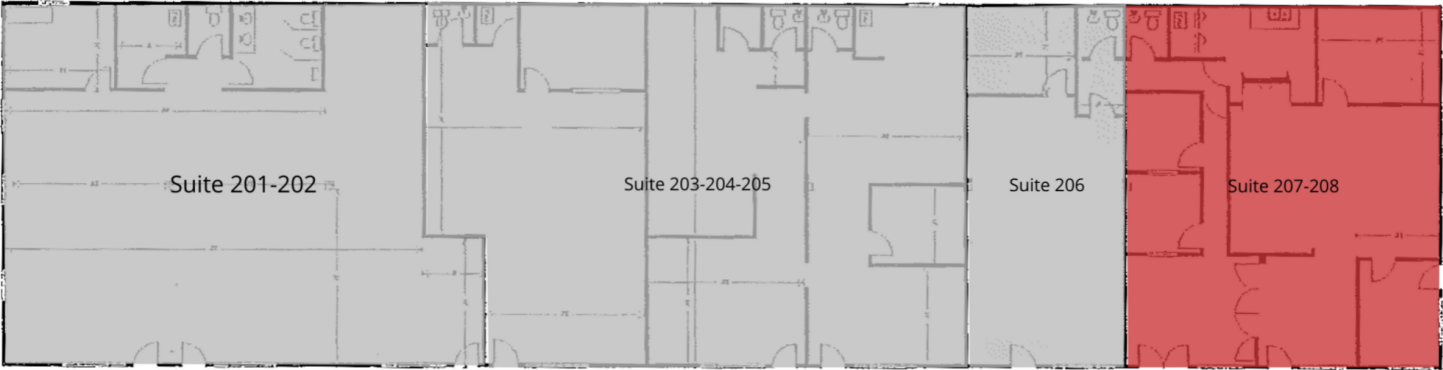
6520 212TH STREET SW, LYNNWOOD, WA 98036



DAVID HALL, CCIM, CPM CANDIDATE  
206.381.3883 x107  
david@corecommercialproperties.com

ECHLYNN BUILDING

6520 212TH STREET SW, LYNNWOOD, WA 98036



LEGEND

Available

Unavailable

LEASE INFORMATION

Lease Type:	NNN	Lease Term:	Negotiable
Total Space:	1,816 SF	Lease Rate:	\$18.00 SF/month

AVAILABLE SPACES

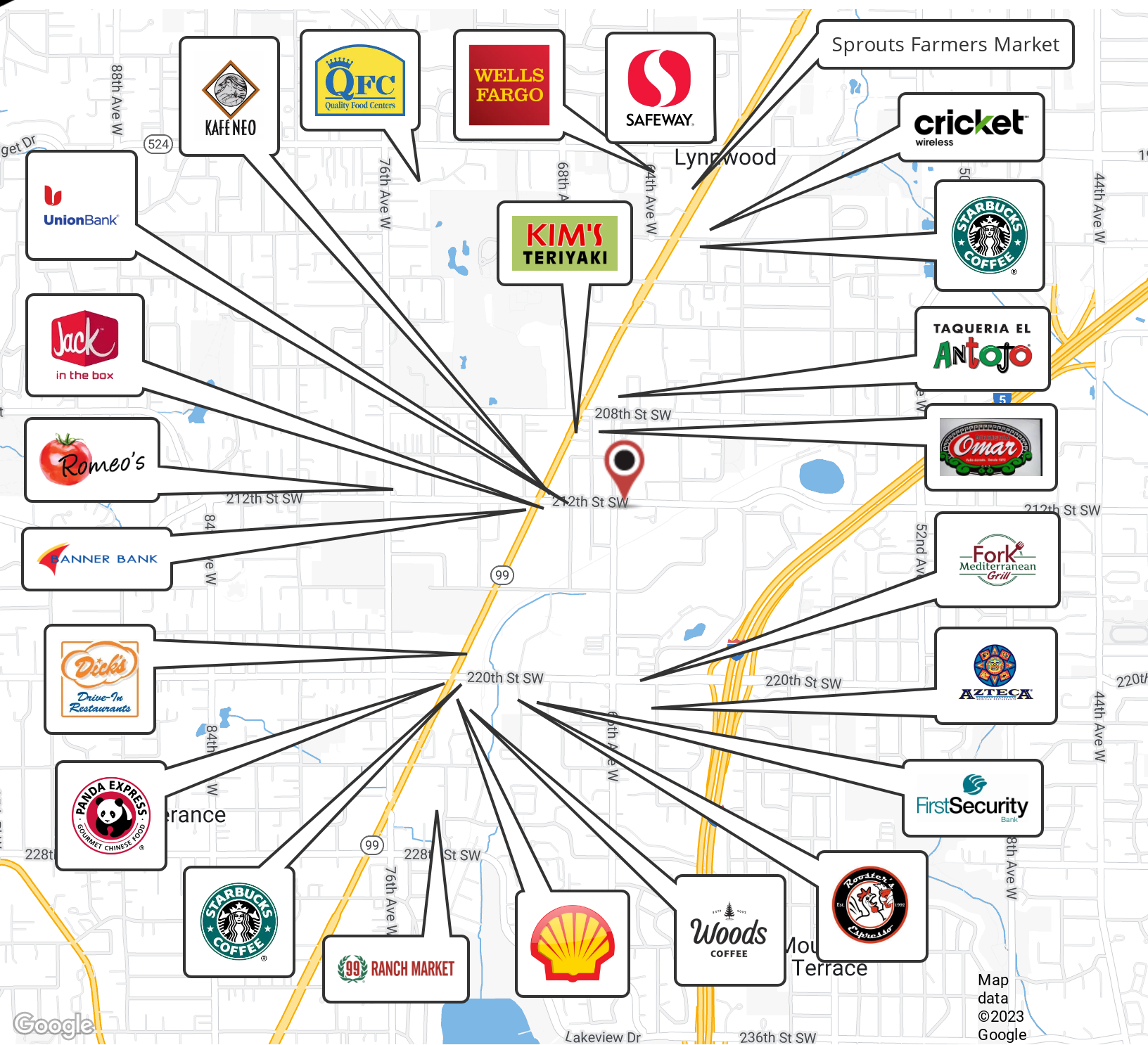
SUITE	TENANT	SIZE	TYPE	RATE	DESCRIPTION
Suite 208	Available	1,816 SF	NNN	\$18.00 SF/month	Ground floor office with reception, large open work areas, conference rooms, offices and private restroom.



DAVID HALL, CCIM, CPM CANDIDATE  
206.381.3883 x107  
david@corecommercialproperties.com

ECHLYNN BUILDING

6520 212TH STREET SW, LYNNWOOD, WA 98036

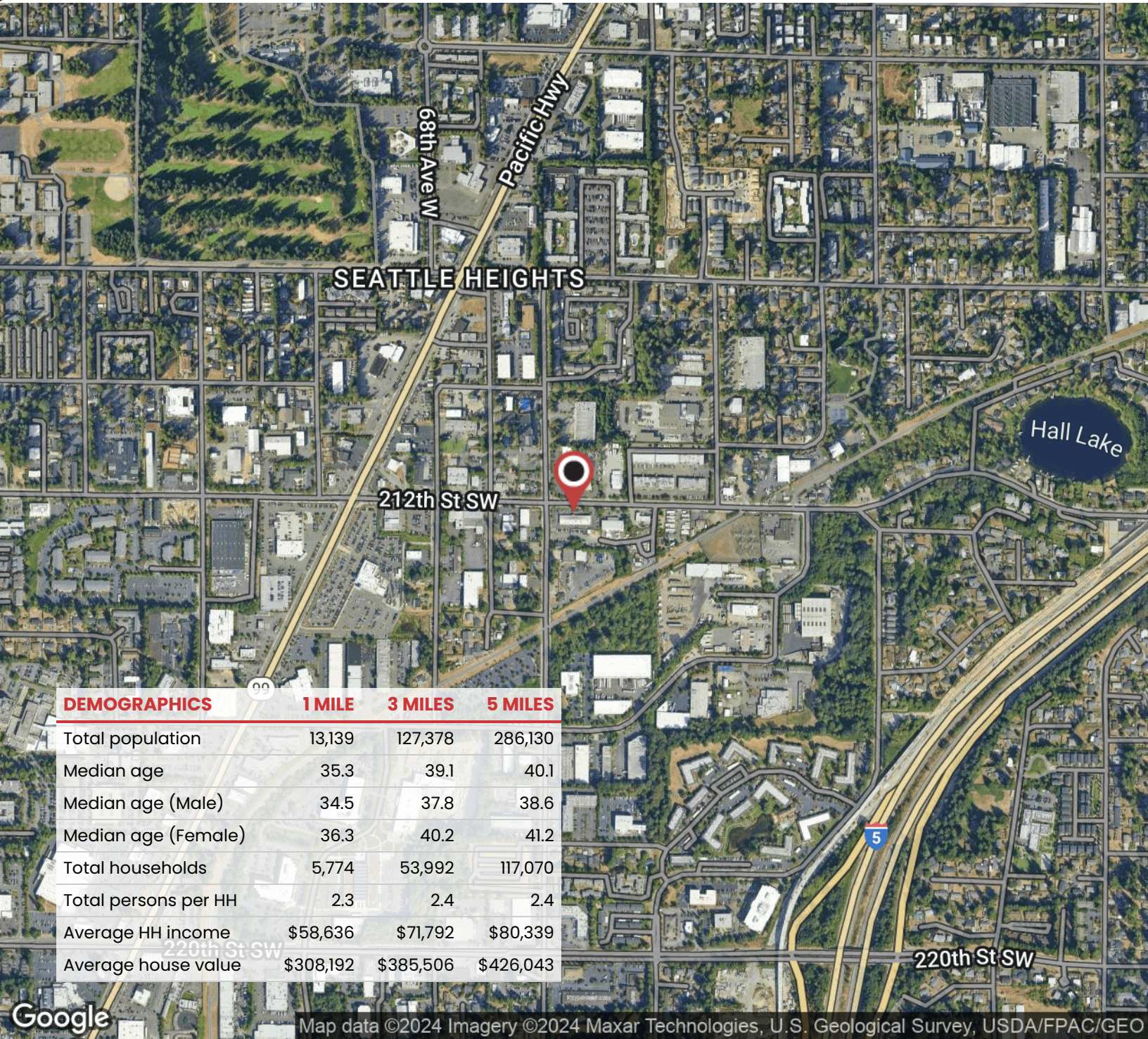


DAVID HALL, CCIM, CPM CANDIDATE  
206.381.3883 x107  
david@corecommercialproperties.com



ECHLYNN BUILDING

6520 212TH STREET SW, LYNNWOOD, WA 98036



DAVID HALL, CCIM, CPM CANDIDATE  
206.381.3883 x107  
david@corecommercialproperties.com