



OFFERING SUMMARY

Available (Suite 108):	2,200 SF
Lease Rate:	\$8.00/SF
CAM:	\$1.50/SF
Building Size:	6,820 SF
Lot Size:	0.22 Acres
Year Built/Renovated:	1965 / 2021
Parking:	65 Spaces
Zoning:	C-3 (Commercial)

PROPERTY HIGHLIGHTS

- Located 1 Block South of E Robinson St - Directly West of Norman Regional Hospital
- Great Location with Frontage on N Porter Ave & Mosier Street
- Traffic Count (vehicles/day): N Porter Ave - 16,310 | E Robinson St - 29,431
- New Front Door Provides Direct Entry to Suite 108 (Installed 2022)
- Building Roof Replaced (2022) | New LED Lights & Ceiling Tiles (2021)
- Tenant Responsible for Utilities & Janitorial

DEMOGRAPHICS

	1 MILE	3 MILES	5 MILES
Total Households	3,386	31,304	48,952
Total Population	8,413	80,724	123,170
Average HH Income	\$60,303	\$76,390	\$86,269

JUDY J. HATFIELD, CCIM

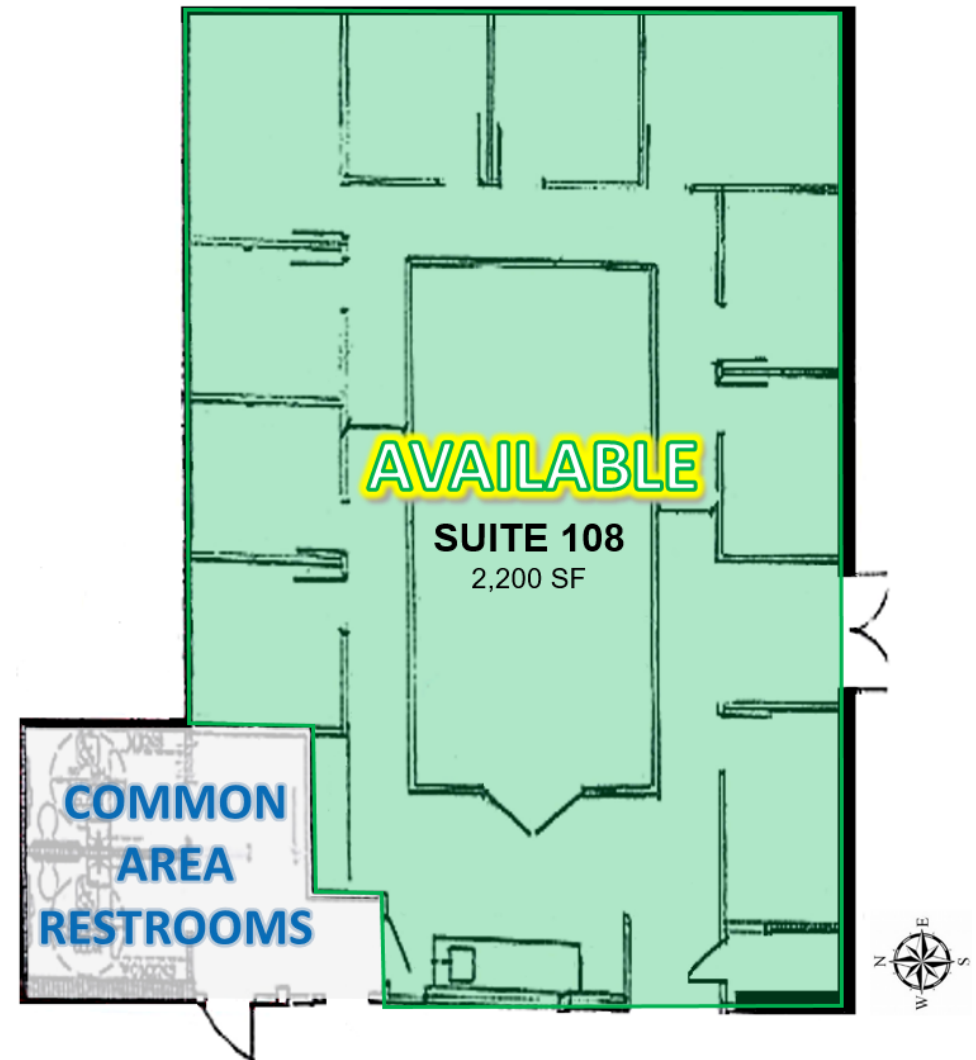
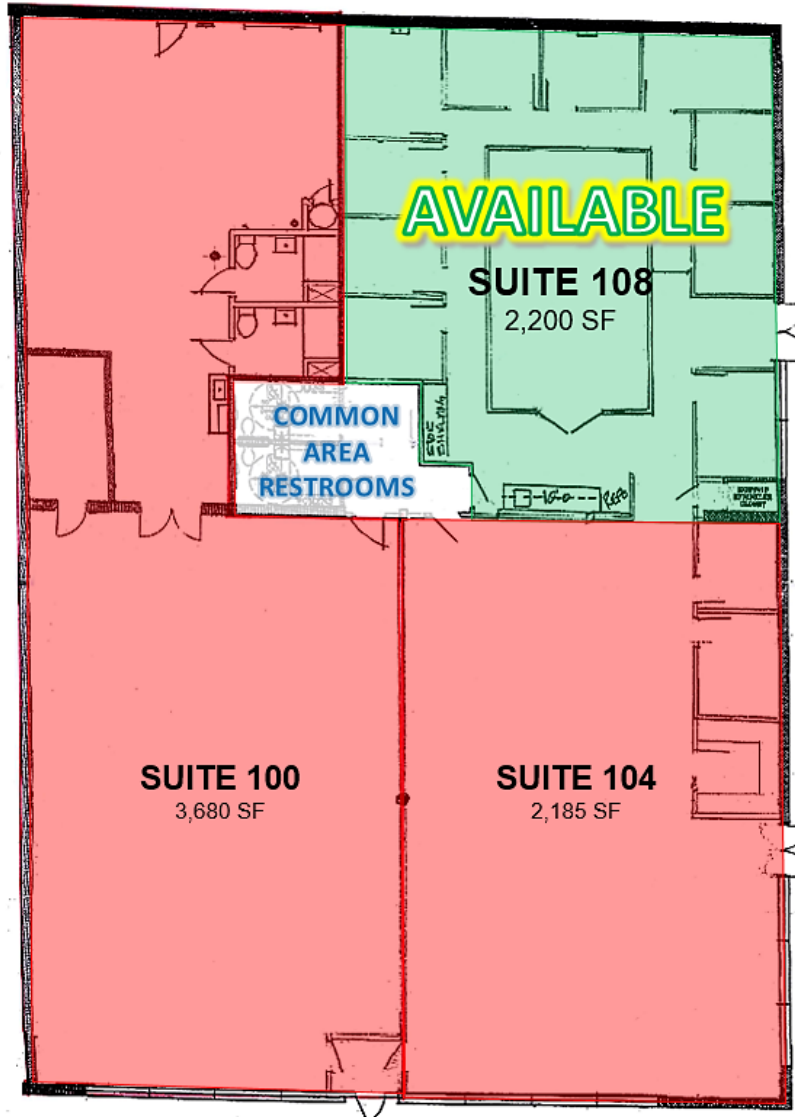
Equity Commercial Realty Advisors, LLC
jjhatfield@ccim.net

(405) 640- 6167 cell
(405) 364- 5300 office

TYLER STEER

Equity Commercial Realty Advisors, LLC
tsteer@equityrealty.net

(405) 642- 4335 cell
(405) 364- 5300 office



JUDY J. HATFIELD, CCIM

Equity Commercial Realty Advisors, LLC
jjhatfield@ccim.net

(405) 640- 6167 cell
(405) 364- 5300 office

TYLER STEER

Equity Commercial Realty Advisors, LLC
tsteer@equityrealty.net

(405) 642- 4335 cell
(405) 364- 5300 office



JUDY J. HATFIELD, CCIM

Equity Commercial Realty Advisors, LLC
jjhatfield@ccim.net

(405) 640- 6167 cell
(405) 364- 5300 office

TYLER STEER

Equity Commercial Realty Advisors, LLC
tsteer@equityrealty.net

(405) 642- 4335 cell
(405) 364- 5300 office