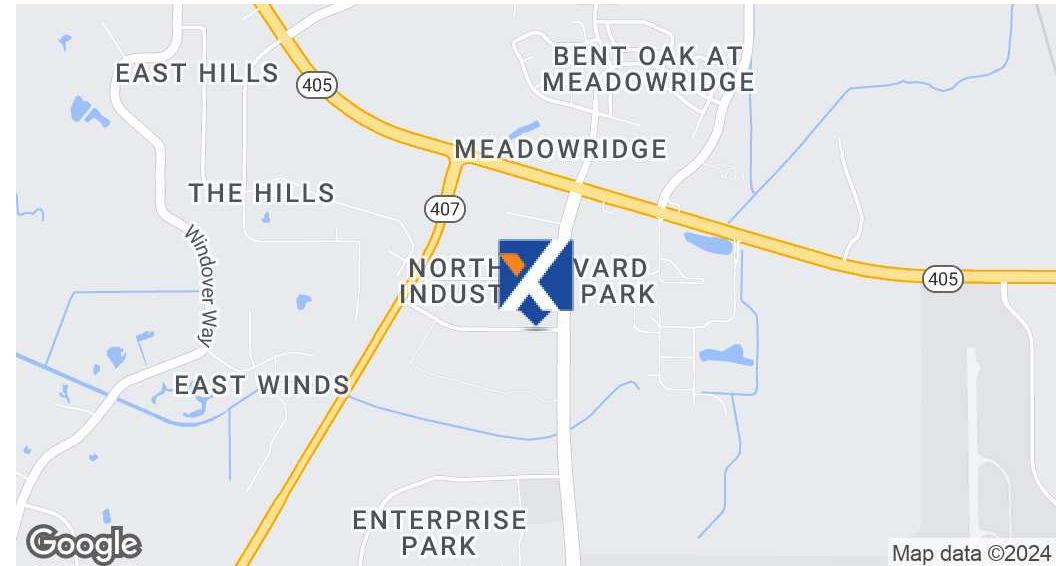
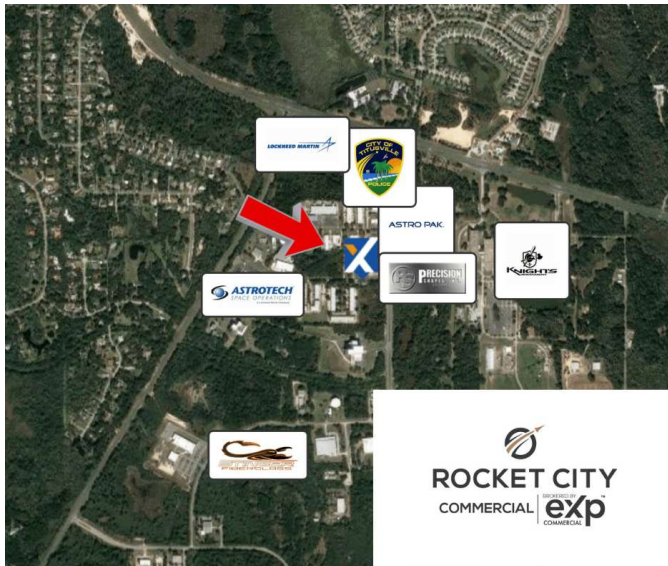


FOR SALE | Prime Vacant Industrial Land For Sale in the Heart of the Space Coast

1205 Chaffee Dr, Titusville, FL 32780



OFFERING SUMMARY

Sale Price:	\$799,000
Available SF:	
Lot Size:	4.93 Acres
Price / Acre:	\$162,069
Zoning:	PID

PROPERTY OVERVIEW

Discover the perfect opportunity to secure your place in the thriving industrial hub of Titusville, near the renowned Kennedy Space Center. This 4.93+/- acre corner lot offers an impressive 600 Square feet of frontage on Grissom Parkway making it a strategic location for your industrial endeavors. Additional frontage on Chaffee Drive adds to the accessibility and potential of this prime property.

Key features:

- * 4.93+/- acres of industrial land
- * 600 square-foot frontage on Grissom Parkway
- * Additional frontage on Chaffee drive
- * Adjacent to Astro Tech Spacecraft Processing facility
- * Proximity to Lockheed Martin's new 32 acre facility
- * Surrounded by industry leaders – neighbors include Knight Enterprises, 8K Solutions, and more

This location places you at the heart of the action, surrounded by industry giants and tech innovators. Join the ranks of the renowned companies and become part of the industrial growth in Titusville, where space, military, and technology converge.

Holly Carver

321.243.8967
Holly@RocketCityRE.com

Lisa Earnhardt

321.291.6601
Lisa@RocketCityRE.com

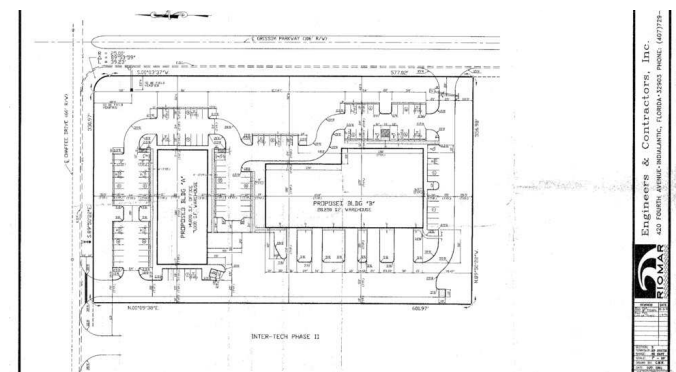
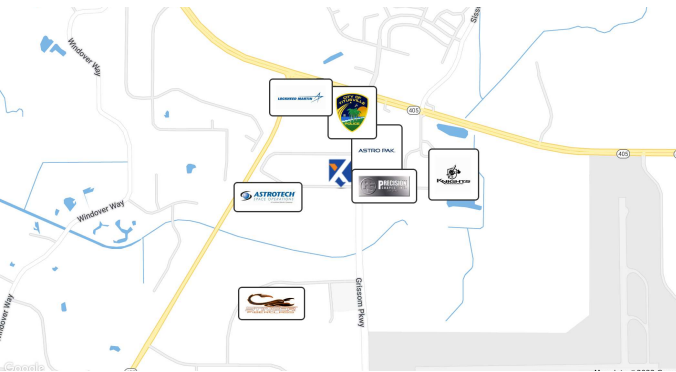
expTM
COMMERCIAL

ROCKET CITY

eXp Commercial, LLC, its direct and indirect parents and their subsidiaries (together, "We") obtained the information above from sources believed to be reliable, however, We have not verified its accuracy and make no guarantee, warranty or representation, expressed or implied, about such information. The information contained above is submitted subject to the possibility of errors, omissions, price changes, rental or other conditions, prior sale, lease or financing, or withdrawal without notice. Any projections, opinions, assumptions or estimates of the information contained above or provided in connection therewith, either expressed or implied, are for example only, and they may not represent current or future performance of the subject property. You, together with your tax and legal advisors, should conduct your own thorough investigation of the subject property and potential investment.

FOR SALE | Prime Vacant Industrial Land For Sale in the Heart of the Space Coast

1205 Chaffee Dr, Titusville, FL 32780



Holly Carver

321.243.8967
Holly@RocketCityRE.com

Lisa Earnhardt

321.291.6601
Lisa@RocketCityRE.com

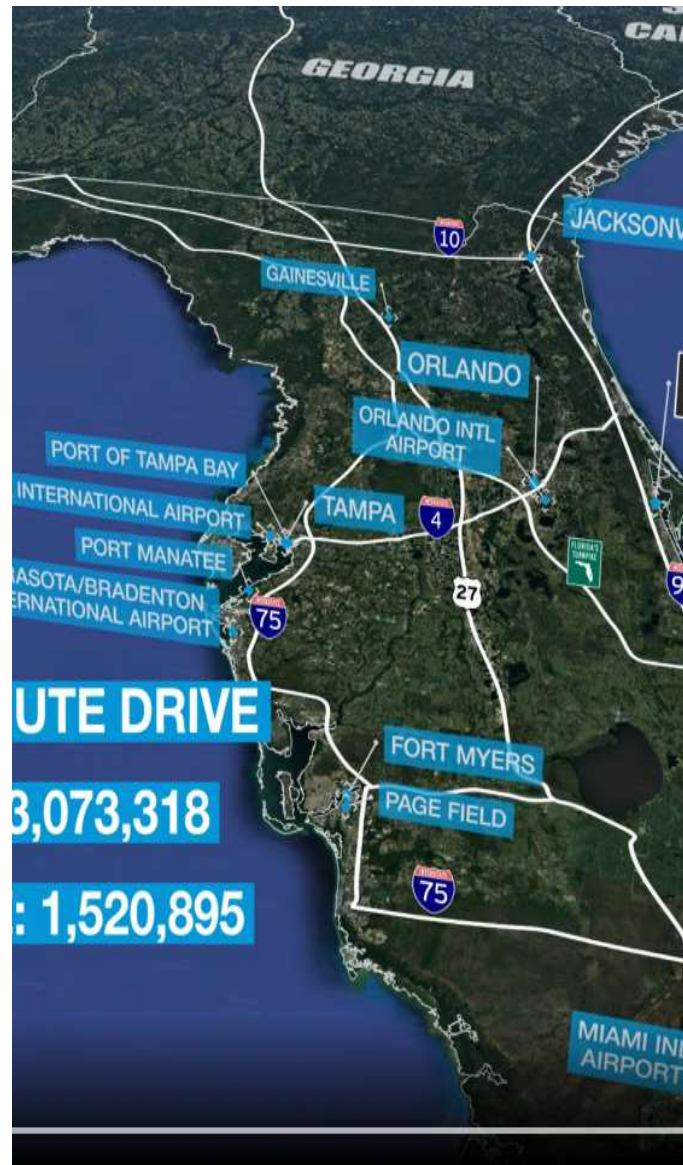
exp
COMMERCIAL

ROCKET CITY

eXp Commercial, LLC, its direct and indirect parents and their subsidiaries (together, "We") obtained the information above from sources believed to be reliable, however, We have not verified its accuracy and make no guarantee, warranty or representation, expressed or implied, about such information. The information contained above is submitted subject to the possibility of errors, omissions, price changes, rental or other conditions, prior sale, lease or financing, or withdrawal without notice. Any projections, opinions, assumptions or estimates of the information contained above or provided in connection therewith, either expressed or implied, are for example only, and they may not represent current or future performance of the subject property. You, together with your tax and legal advisors, should conduct your own thorough investigation of the subject property and potential investment.

FOR SALE | Prime Vacant Industrial Land For Sale in the Heart of the Space Coast

1205 Chaffee Dr, Titusville, FL 32780



Holly Carver

321.243.8967
Holly@RocketCityRE.com

Lisa Earnhardt

321.291.6601
Lisa@RocketCityRE.com

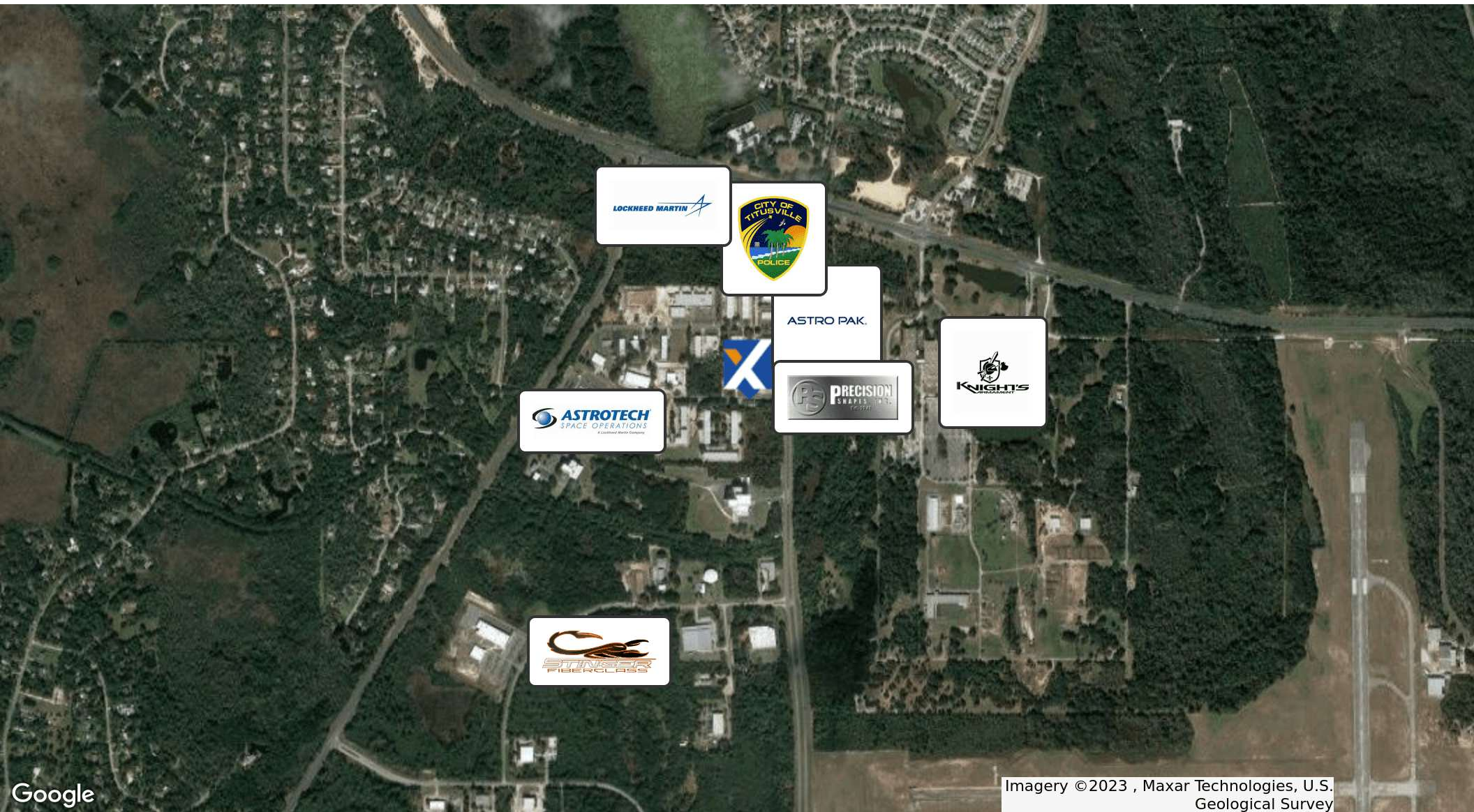
expTM
COMMERCIAL


ROCKET CITY

eXp Commercial, LLC, its direct and indirect parents and their subsidiaries (together, "We") obtained the information above from sources believed to be reliable, however, We have not verified its accuracy and make no guarantee, warranty or representation, expressed or implied, about such information. The information contained above is submitted subject to the possibility of errors, omissions, price changes, rental or other conditions, prior sale, lease or financing, or withdrawal without notice. Any projections, opinions, assumptions or estimates of the information contained above or provided in connection therewith, either expressed or implied, are for example only, and they may not represent current or future performance of the subject property. You, together with your tax and legal advisors, should conduct your own thorough investigation of the subject property and potential investment.

FOR SALE | Prime Vacant Industrial Land For Sale in the Heart of the Space Coast

1205 Chaffee Dr, Titusville, FL 32780



Holly Carver

321.243.8967
Holly@RocketCityRE.com

Lisa Earnhardt

321.291.6601
Lisa@RocketCityRE.com

expTM
COMMERCIAL


ROCKET CITY

eXp Commercial, LLC, its direct and indirect parents and their subsidiaries (together, "We") obtained the information above from sources believed to be reliable, however, We have not verified its accuracy and make no guarantee, warranty or representation, expressed or implied, about such information. The information contained above is submitted subject to the possibility of errors, omissions, price changes, rental or other conditions, prior sale, lease or financing, or withdrawal without notice. Any projections, opinions, assumptions or estimates of the information contained above or provided in connection therewith, either expressed or implied, are for example only, and they may not represent current or future performance of the subject property. You, together with your tax and legal advisors, should conduct your own thorough investigation of the subject property and potential investment.