

RETAIL PROPERTY FOR LEASE

# CREIGHTON COMMONS

2620 CREIGHTON RD.  
PENSACOLA, FL

stirling







### OFFERING SUMMARY

Lease Rate:	\$17.50 SF/yr (NNN)
Building Size:	23,760 SF
Available SF:	3,528 SF
Lot Size:	1.657 Acres
Number of Units:	10
Year Built:	2003
Zoning:	C-1

### PROPERTY OVERVIEW

Stirling is pleased to bring to market Creighton Commons located in Pensacola, FL. This 23,000 SF retail center is the shadow center to Walmart Supercenter, located on busy Creighton Road, which boasts a traffic count average of 23,500 cars per day. The center recently underwent a complete revitalization to include aesthetic enhancements to the center's facade and seal coating of the parking lot. This retail center site is strategically located at a lighted intersection and is near the busy intersection of 9th Ave. The owner is willing to offer competitive rates, free rent, and/or tenant improvement allowance. Come join tenants like Game Stop, Sally's Beauty Supply, WellCare, and Cuts By Us.



### LEASE INFORMATION

Lease Type:	NNN
Total Space:	3,528 SF

Lease Term:	Negotiable
Lease Rate:	\$17.50 SF/yr

### AVAILABLE SPACES

SUITE	TENANT	SIZE (SF)	LEASE TYPE	LEASE RATE	DESCRIPTION
Suite 302	Available	3,528 SF	NNN	\$17.50 SF/yr	-





**SHAWN MAXEY**

850.972.0162

[smaxe@stirlingprop.com](mailto:smaxe@stirlingprop.com)

**ALEC PURSER**

850.969.1002

[apurser@stirlingprop.com](mailto:apurser@stirlingprop.com)

[STIRLINGPROPERTIES.COM](http://STIRLINGPROPERTIES.COM) / [f](#) [t](#) [i](#) [n](#)

Member of [/4](#)  
RETAIL BROKERS NETWORK





Imagery ©2024 Airbus, CNES / Airbus, Landsat / Copernicus, Maxar Technologies, U.S. Geological Survey, USDA/FPAC/GEO

**SHAWN MAXEY**

850.972.0162

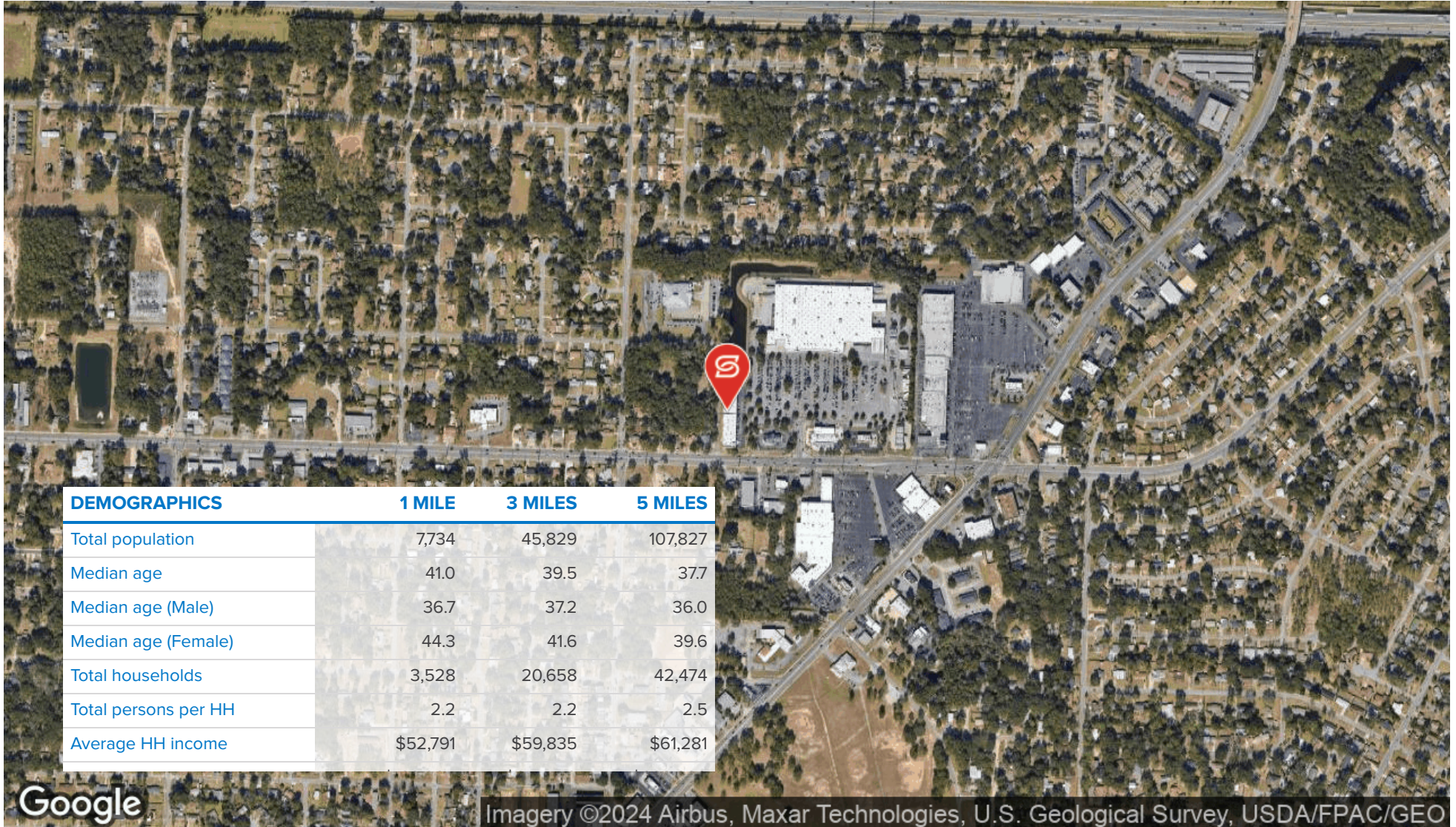
smaxey@stirlingprop.com

**ALEC PURSER**

850.969.1002

apurser@stirlingprop.com









**SHAWN MAXEY**

Advisor

**Direct:** 850.972.0162 **Cell:** 850.240.1252  
smaxey@stirlingprop.com

stirling



**ALEC PURSER**

Advisor

**Direct:** 850.969.1002 **Cell:** 850.602.3447  
apurser@stirlingprop.com

stirling