

JAMESON.

FOR LEASE

RETAIL/OFFICE

2800 N. Milwaukee Avenue | Chicago, IL 60618

Inquire for rental details.



Robert Jay Friedman
Vice President, Sales & Leasing
312.810.7203
rjfsite@jameson.com

JAMESONCOMMERCIAL.COM

©Jameson Real Estate LLC. All information provided herein is from sources deemed reliable. No representation is made as to the accuracy thereof & it is submitted subject to errors, omissions, changes, prior sale or lease, or withdrawal without notice. Projections, opinions, assumptions & estimates are presented as examples only & may not represent actual performance. Consult tax & legal advisors to perform your own investigation.

JAMESON.



LEASE OVERVIEW

LEASE PRICE: Inquire

BUILDING SIZE: 37,800 SF

YEAR BUILT: 1933

ZONING: B-1-3

MARKET: Avondale / Logan Square

CROSS STREETS: Milwaukee, Diversey & Kimball Avenue

Robert Jay Friedman
Vice President, Sales & Leasing
312.810.7203
rjfsite@jameson.com

PROPERTY DESCRIPTION

One retail/office space:
2812 N. Milwaukee Avenue (1,307 SF)

One Retail space
2800 N. Milwaukee Avenue, (4,053 SF)

PROPERTY HIGHLIGHTS

- Rarely available property at the Hairpin Arts Center
- New white box delivery at 2812 N. Milwaukee Fall 2023

AREA AND TRANSPORTATION HIGHLIGHTS

- Multiple bus routes and train routes
-

JAMESON.

EXTERIOR PHOTOS

2812 N. Milwaukee Avenue, Chicago, IL 60618

[Inquire](#)

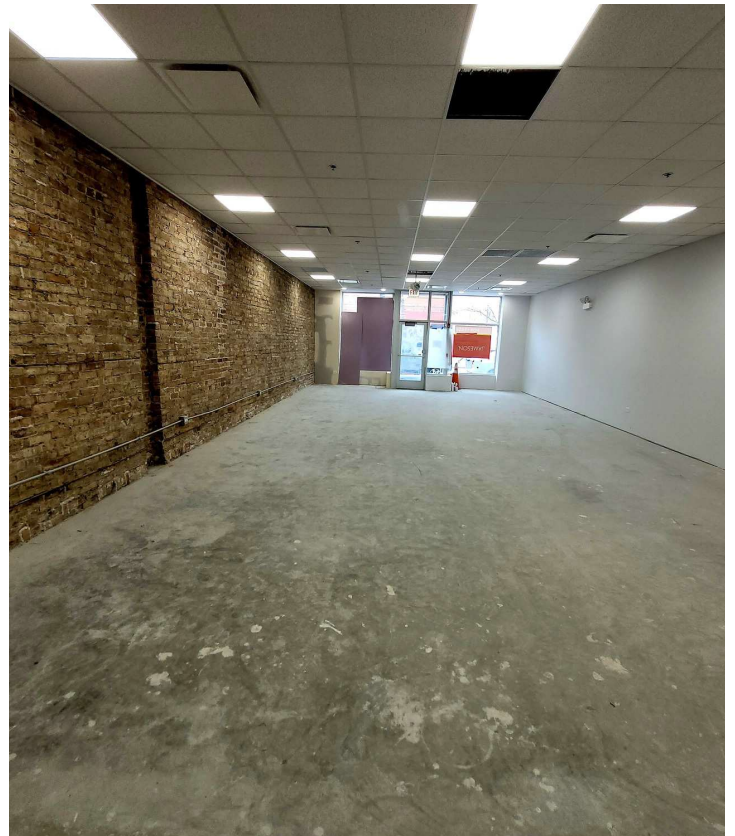
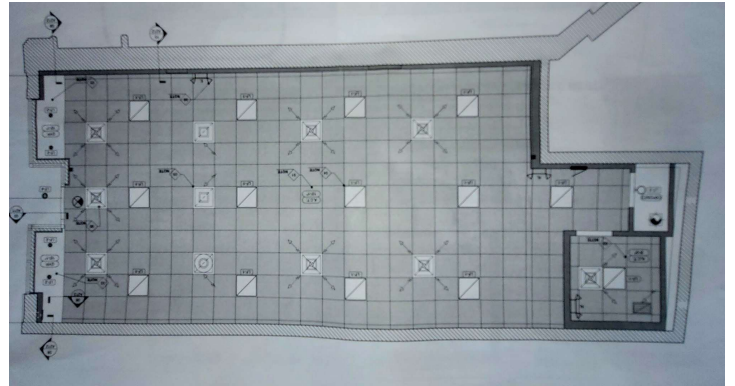
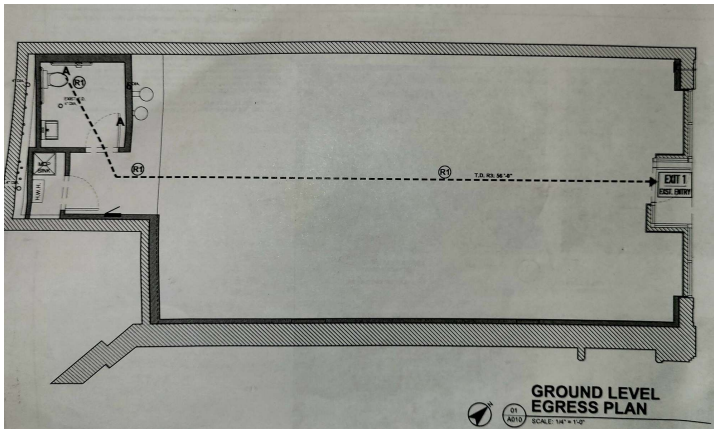


JAMESON.

INTERIOR PHOTOS

2800 N. Milwaukee Avenue, Chicago, IL 60618


[Inquire](#)



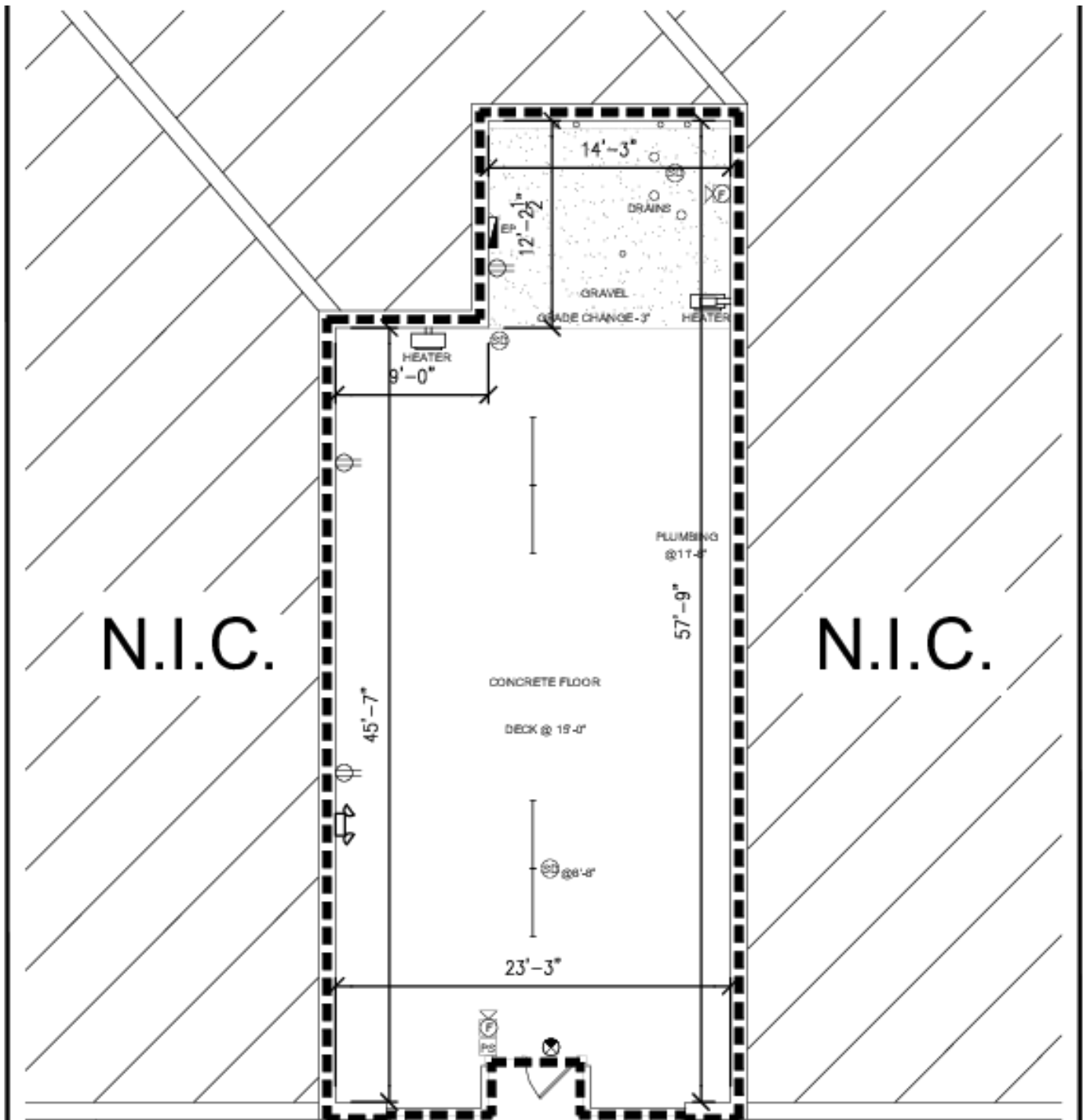
FLOOR PLAN

2812 N. Milwaukee Avenue, Chicago, IL 60618

[Inquire](#)

 RENTABLE AREA:
4,093 SF

FIRST FLOOR
LEASE PLAN



LEASE OUTLINE DRAWING
SCALE: 1/8"=1'-0"



chadha+ associates
architecture + interiors + design
388 WEST MONROE STREET
SUITE 2070 CHICAGO ILLINOIS 60604
T 312 332 2882 | F 312 332 8884
WWW.CHADHAARCHITECTS.COM

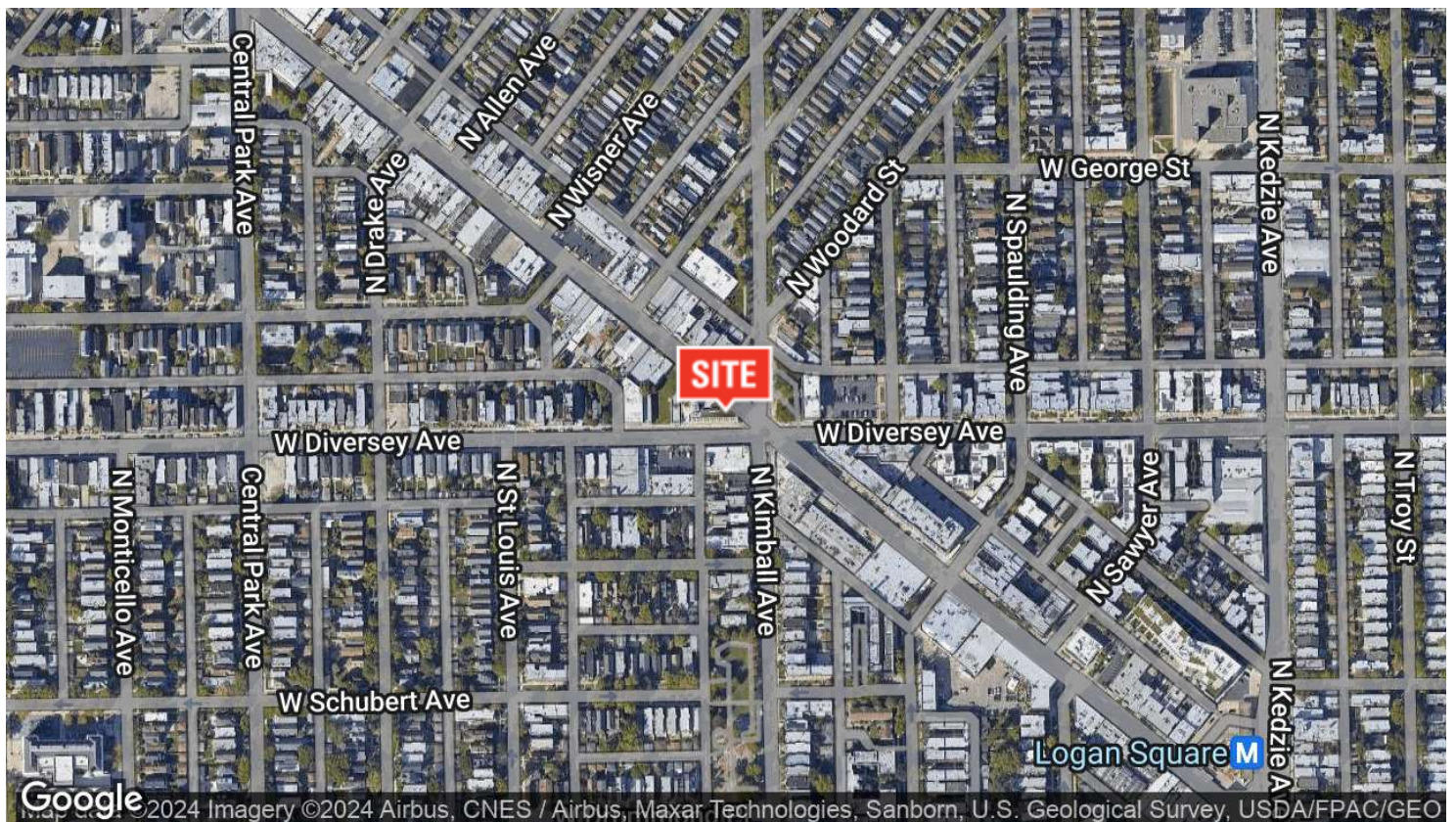
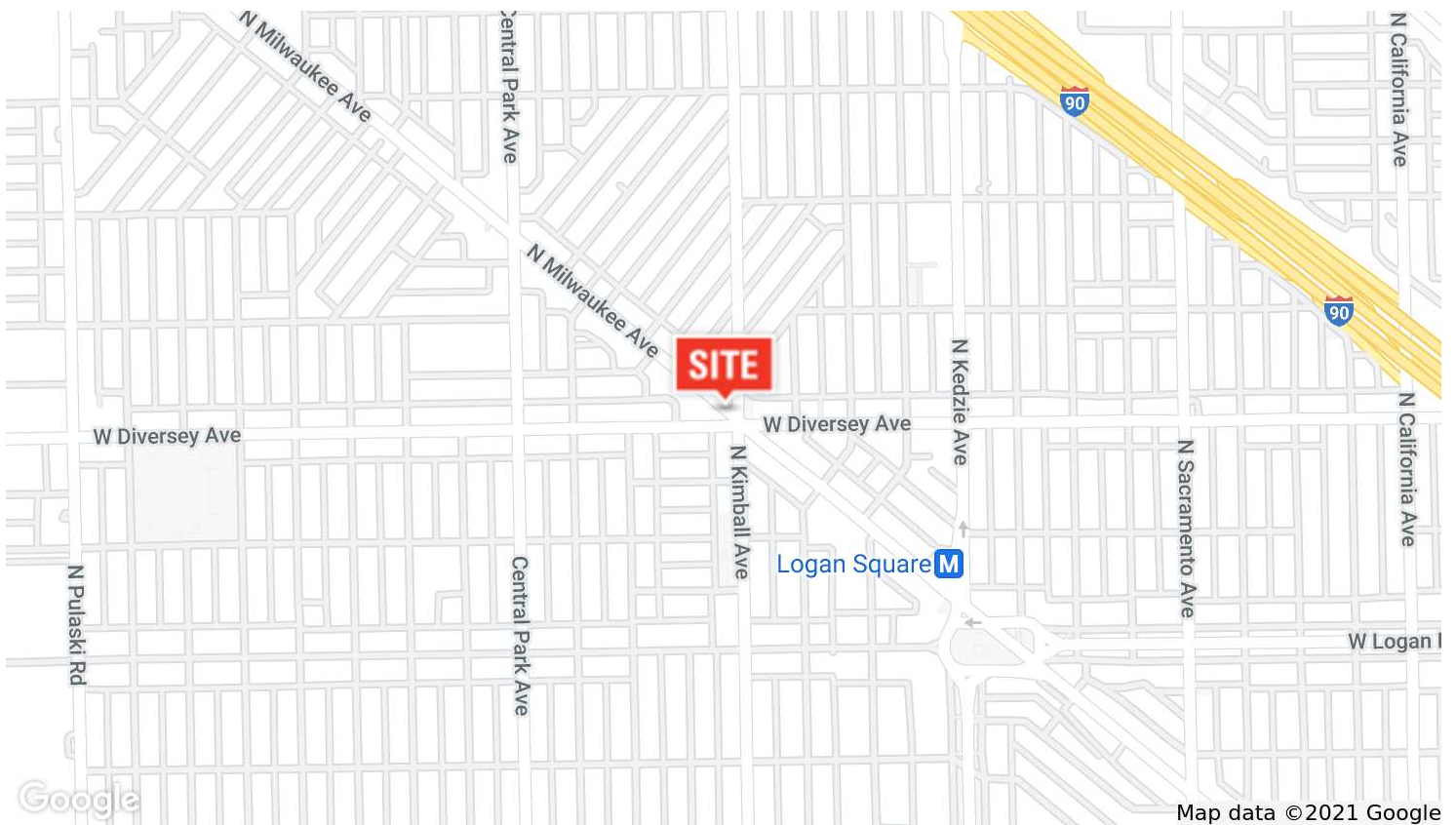
EXISTING CONDITIONS - 1,307 SF
2812 N. MILWAUKEE AVE.
CHICAGO, IL 60607

LOD

05/31/2018
5386

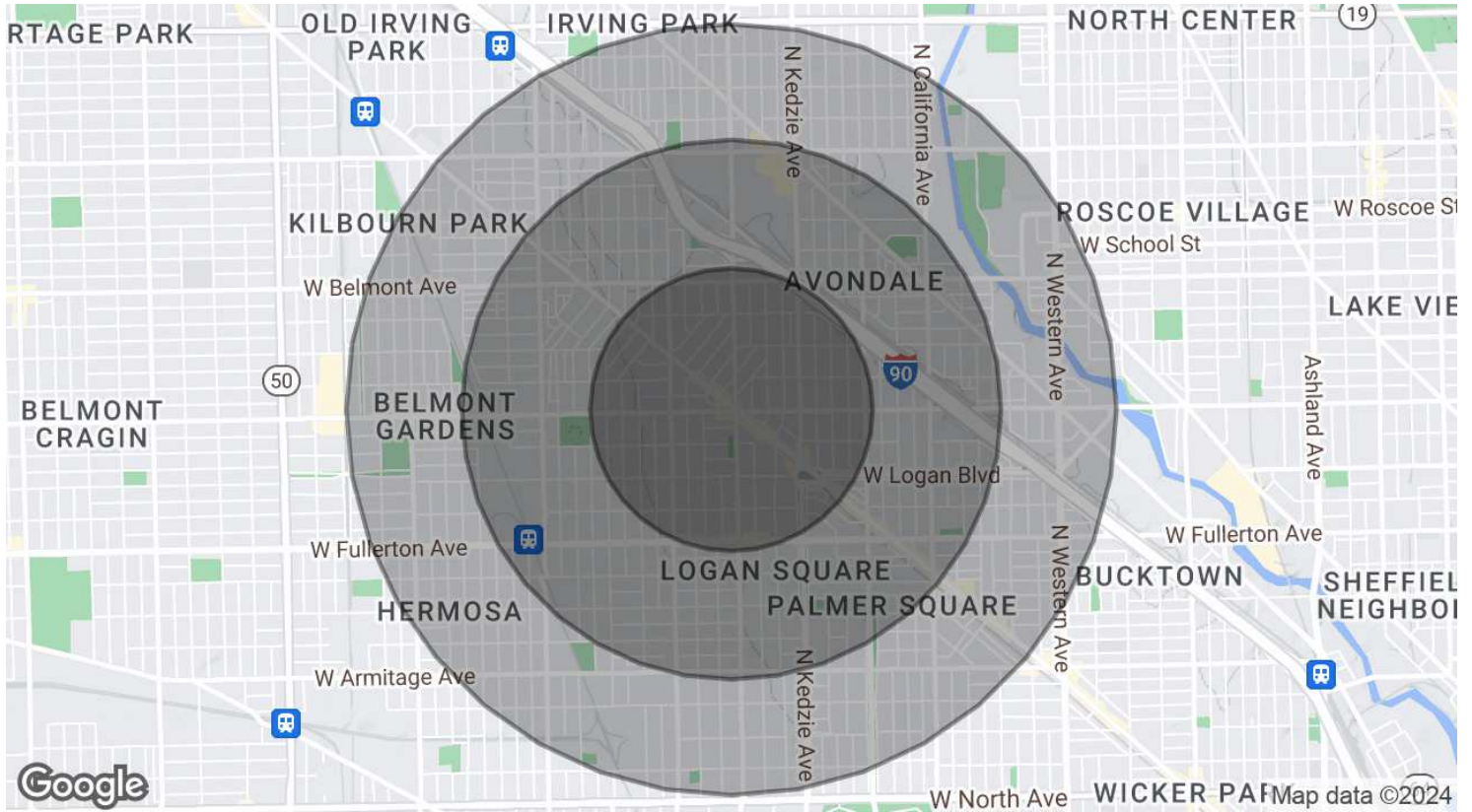
AERIAL & STREET DETAIL

2800 N. Milwaukee Avenue, Chicago, IL 60618

[Inquire](#)

DEMOGRAPHICS MAP & REPORT

2800 N. Milwaukee Avenue, Chicago, IL 60618

[Inquire](#)

POPULATION

0.55 MILES

1.05 MILES

1.5 MILES

Total Population	27,304	84,888	152,478
Average age	31.1	31.5	32.1
Average age (Male)	30.7	31.3	31.9
Average age (Female)	32.0	32.3	32.7

HOUSEHOLDS & INCOME

0.55 MILES

1.05 MILES

1.5 MILES

Total households	10,047	30,673	54,330
# of persons per HH	2.7	2.8	2.8
Average HH income	\$55,524	\$56,222	\$57,378
Average house value	\$371,015	\$377,212	\$382,241

* Demographic data derived from 2020 ACS - US Census