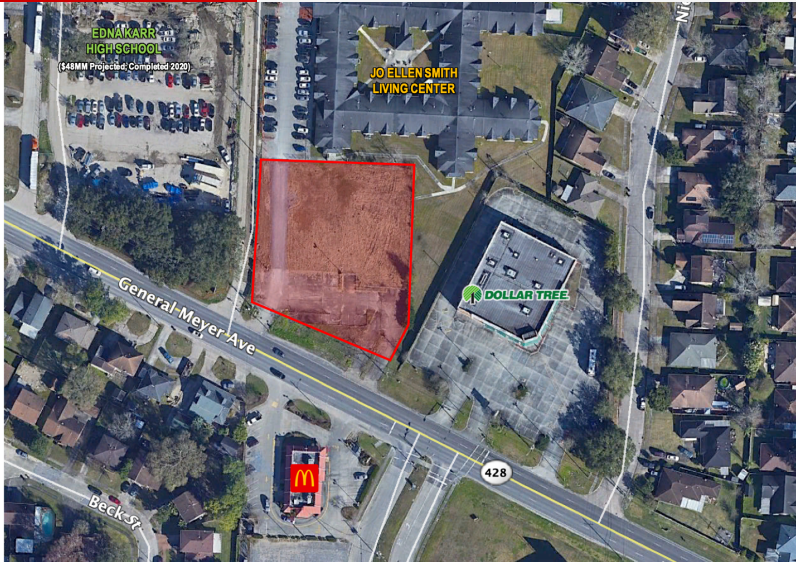


PROPERTY SUMMARY



Property Highlights

- Vacant land available for ground lease suitable for retail, medical, etc.
- Located adjacent to Dollar Tree
- Zoned: C-1
- Nearby Edna Karr High School completed a new \$48M state-of-the-art building in 2020
- *Certain use restrictions apply including dollar stores and service stations.*

Matthew Pittman, CCIM
504.322.1275
mpittman@beaibox.com

Broker of Record, Beau J. Box; Licensed by the Louisiana Real Estate Commission, Mississippi Real Estate Commission, Alabama Real Estate Commission and Florida Real Estate Commission, USA. This information has been secured from sources we believe to be reliable, but we make no representations or warranties, expressed or implied, as to the accuracy of the information. References to square footage or age are approximate. Buyer must verify the information and bears all risk for any inaccuracies. © Beau Box Commercial Real Estate. | December 19, 2021



Offering Summary

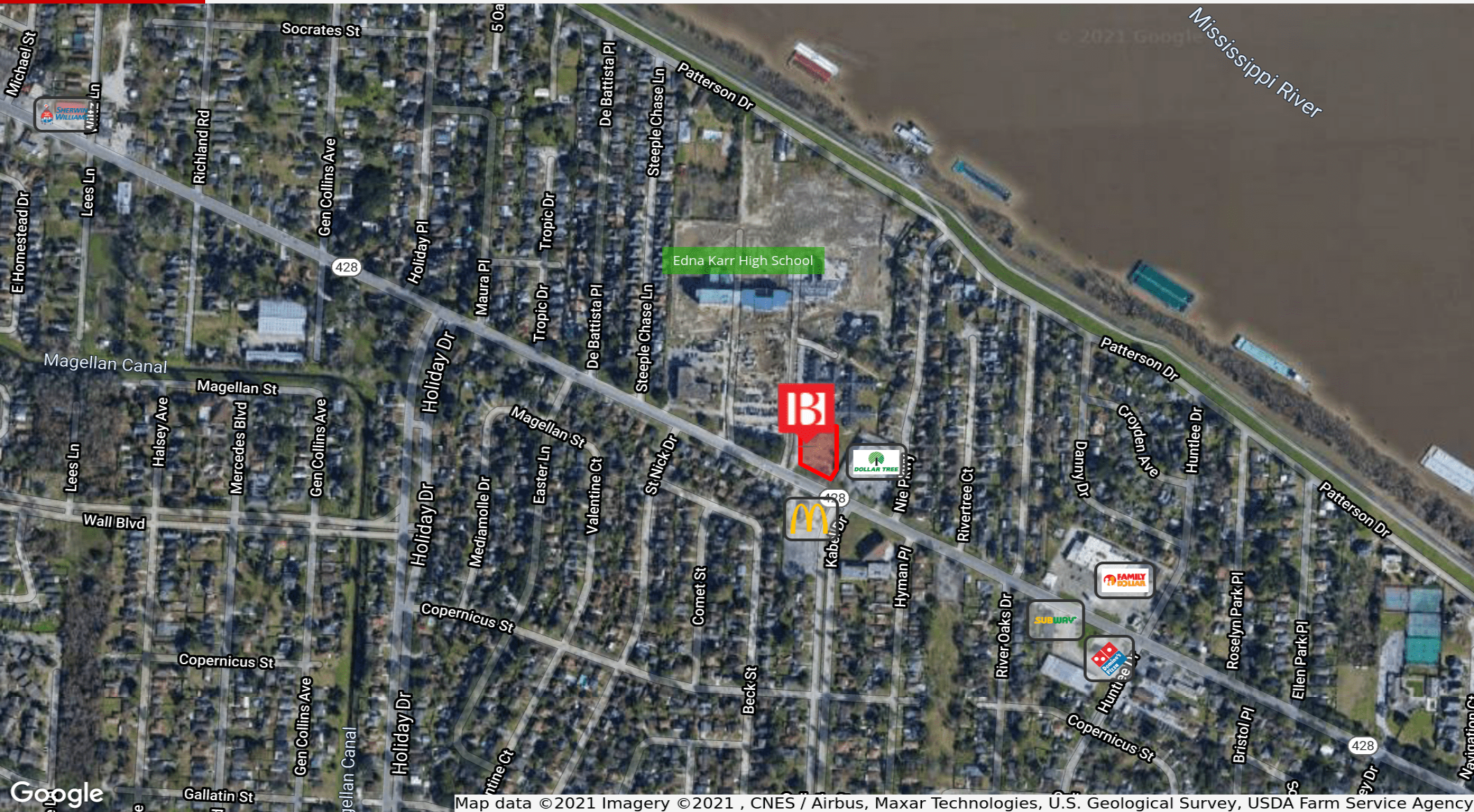
Lease Rate:	Negotiable
Available SF:	50,000 SF
Lot Size:	1.15 Acres

Demographics	1 Mile	3 Miles	5 Miles
Total Households	4,737	31,573	77,240
Total Population	13,183	88,690	199,247
Average HH Income	\$60,719	\$51,896	\$55,885



4500 General Meyer Ave
New Orleans, LA 70131

LOCATION MAP



Matthew Pittman, CCIM
504.322.1275
mpittman@beaubox.com

Broker of Record, Beau J. Box; Licensed by the Louisiana Real Estate Commission, Mississippi Real Estate Commission, Alabama Real Estate Commission and Florida Real Estate Commission, USA. This information has been secured from sources we believe to be reliable, but we make no representations or warranties, expressed or implied, as to the accuracy of the information. References to square footage or age are approximate. Buyer must verify the information and bears all risk for any inaccuracies. © Beau Box Commercial Real Estate. | December 19, 2021

