

RE/MAX ADVANTAGE PLUS

CrosstownCommercial

Each office independently owned and operated

FOR SALE | LAND

751 E MAIN ST

WACONIA, MN 55387

RE/MAX ADVANTAGE PLUS

1251 Town Centre Drive

Eagan, MN 55123

REMAXCOMMERCIAL.COM

FOR MORE INFORMATION,
CONTACT:

TIM LITTLE

Chief Commercial Broker

952.432.4900

tctimlittle@gmail.com

JIM STARR

Sr. Associate

612.247.5898

jjstarr41@gmail.com

LUIS OLVERA

Associate

612.803.0142

luis1olvera@comcast.net

JEREMY FELDMANN

Associate

406.314.3333

jeremy.feldmann@remax.net

MN #40702141



751 E MAIN ST

WACONIA, MN 55387



OFFERING SUMMARY

Sale Price:	\$1,045,000
Available SF:	
Lot Size:	10.4 Acres
Price / Acre:	\$100,481

PROPERTY OVERVIEW

Incredible opportunity! Perfect site for retail, office or medical building. Adjacent to Target and the new Twin Cities Orthopedics that is currently being built. Frontage onto State Hwy 5 and Hwy 10. Waconia is a fast growing community with a wide range of new business opportunities surrounded by retail, wineries, breweries, distilleries and highly coveted Ridgeview Medical Center.

- Includes parcel only the EAST side of Main Street. The land on the west is NOT included as part of this sale.

RE/MAX ADVANTAGE PLUS

CrosstownCommercial

JEREMY FELDMANN
Associate
406.314.3333
jeremy.feldmann@remax.net
MN #40702141

LUIS OLVERA
Associate
612.803.0142
luis1olvera@comcast.net

JIM STARR
Sr. Associate
612.247.5898
jjstarr41@gmail.com

TIM LITTLE
Chief Commercial Broker
952.432.4900
tctimlittle@gmail.com

RE/MAX ADVANTAGE PLUS

Each office independently owned and operated

1251 Town Centre Drive
Eagan, MN 55123

REMAXCOMMERCIAL.COM

751 E MAIN ST

WACONIA, MN 55387



RE/MAX ADVANTAGE PLUS

CrosstownCommercial

JEREMY FELDMANN
Associate
406.314.3333
jeremy.feldmann@remax.net
MN #40702141

LUIS OLVERA
Associate
612.803.0142
luis1olvera@comcast.net

JIM STARR
Sr. Associate
612.247.5898
jjstarr41@gmail.com

TIM LITTLE
Chief Commercial Broker
952.432.4900
tctimlittle@gmail.com

RE/MAX ADVANTAGE PLUS
Each office independently owned and operated

1251 Town Centre Drive
Eagan, MN 55123

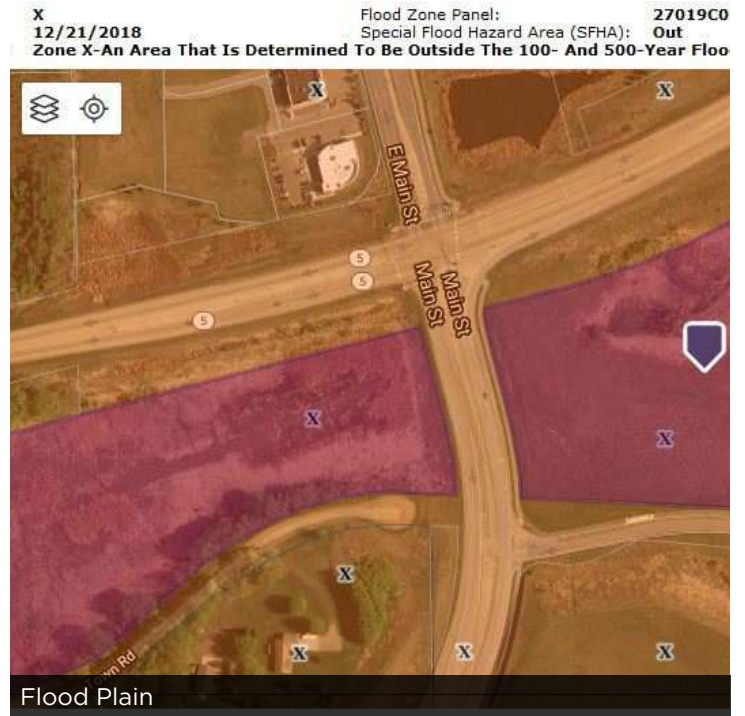
REMAXCOMMERCIAL.COM

751 E MAIN ST

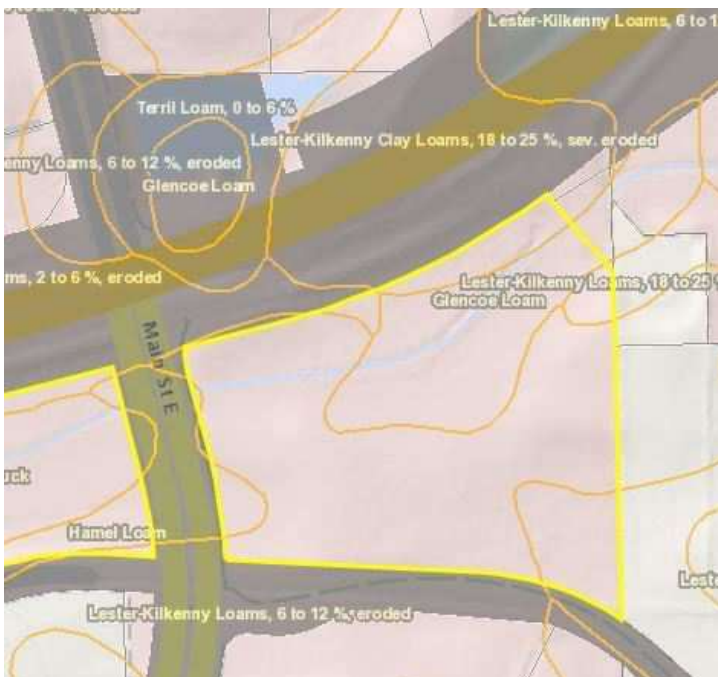
WACONIA, MN 55387



Contour Map



Flood Plain



Soils Map



Wetlands Map

RE/MAX ADVANTAGE PLUS

CrosstownCommercial

JEREMY FELDMANN

Associate

406.314.3333

jeremy.feldmann@remax.net

MN #40702141

LUIS OLVERA

Associate

612.803.0142

luis1olvera@comcast.net

JIM STARR

Sr. Associate

612.247.5898

jjstarr41@gmail.com

TIM LITTLE

Chief Commercial Broker

952.432.4900

tctimlittle@gmail.com

RE/MAX ADVANTAGE PLUS

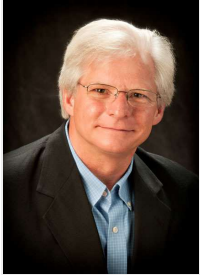
Each office independently owned and operated

1251 Town Centre Drive
Eagan, MN 55123

REMAXCOMMERCIAL.COM

751 E MAIN ST

WACONIA, MN 55387



TIM LITTLE

Chief Commercial Broker

C: 952.432.4900

tctimlittle@gmail.com



JIM STARR

Sr. Associate

C: 612.247.5898

jjstarr41@gmail.com



LUIS OLVERA

Associate

C: 612.803.0142

luis1olvera@comcast.net



JEREMY FELDMANN

Associate

C: 406.314.3333

jeremy.feldmann@remax.net

MN #40702141 // MT #rre-bro-lic-62417

RE/MAX ADVANTAGE PLUS

CrosstownCommercial

RE/MAX ADVANTAGE PLUS

Each office independently owned and operated

JEREMY FELDMANN

Associate

406.314.3333

jeremy.feldmann@remax.net

MN #40702141

LUIS OLVERA

Associate

612.803.0142

luis1olvera@comcast.net

JIM STARR

Sr. Associate

612.247.5898

jjstarr41@gmail.com

TIM LITTLE

Chief Commercial Broker

952.432.4900

tctimlittle@gmail.com

1251 Town Centre Drive
Eagan, MN 55123

REMAXCOMMERCIAL.COM