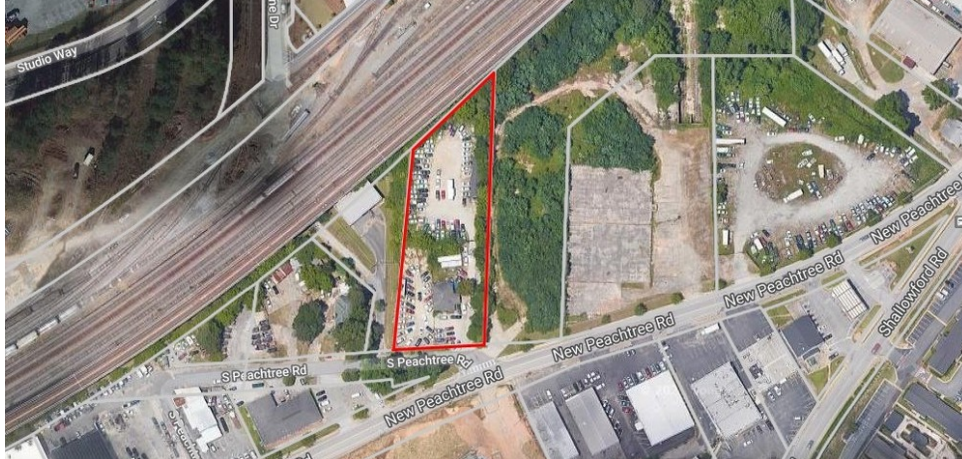


LAND FOR SALE

5788 S PEACHTREE

5788 New Peachtree Rd, Doraville, GA 30340



OFFERING SUMMARY

SALE PRICE:	\$1,300,000
LOT SIZE:	1.3 Acres
ZONING:	T-5
MARKET:	Atlanta
SUBMARKET:	Doraville
PRICE / SF:	\$22.96

PROPERTY OVERVIEW

Fantastic Re-development site located just over the tracks from Studio City in the City of Doraville. The property has been used as a used car lot with an existing office 2200 sf building. The Doraville Transect-5 (T-5) Zoning allows for commercial and residential uses, please see Doraville Code of Ordinance.

PROPERTY HIGHLIGHTS

- 1.3 Acres of level land
- Fantastic location, close to Doraville Marta Station
- Just across from the new Doraville United Elementary School

WIDESPREAD COMMERCIAL LLC
866.694.1374
1816 Briarwood Industrial Ct,
Suite A

DANNY GLUSMAN
Broker
O: 404.465.3941
C: 404.822.9193
dglusman@widespreadgroup.com
GA #361412

WIDESPREAD
COMMERCIAL GROUP

Each Office Independently Owned and Operated widespreadgroup.com

We obtained the information above from sources we believe to be reliable. However, we have not verified its accuracy and make no guarantee, warranty or representation about it. It is submitted subject to the possibility of errors, omissions, change of price, rental or other conditions, prior sale, lease or financing, or withdrawal without notice. We include projections, opinions, assumptions or estimates for example only, and they may not represent current or future performance of the property. You and your tax and legal advisors should conduct your own investigation of the property and transaction.

LAND FOR SALE

5788 S PEACHTREE

5788 New Peachtree Rd, Doraville, GA 30340



WIDESPREAD COMMERCIAL LLC
866.694.1374
1816 Briarwood Industrial Ct,
Suite A

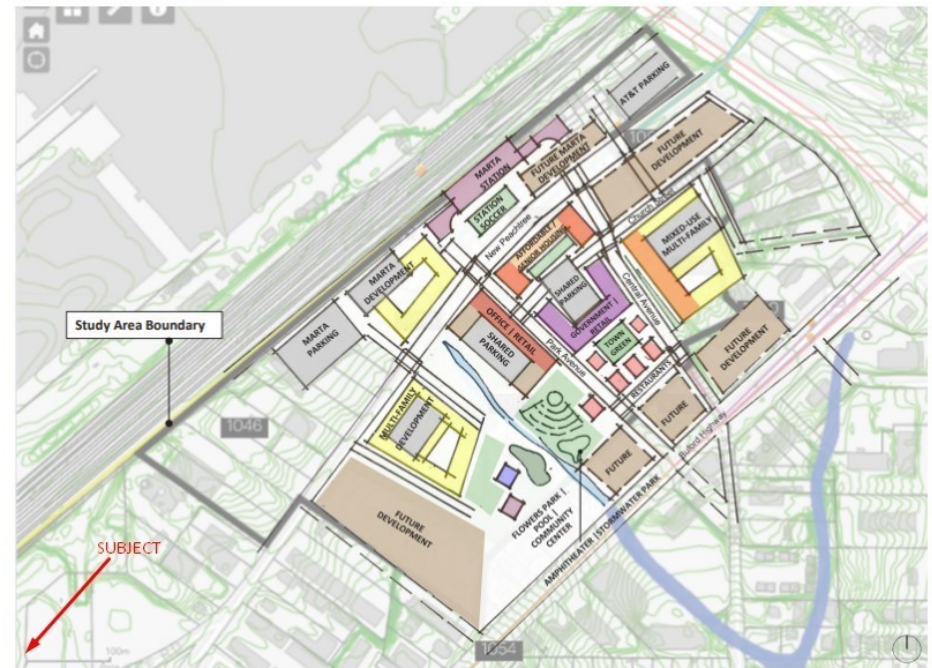
DANNY GLUSMAN
Broker
O: 404.465.3941
C: 404.822.9193
dglusman@widespreadgroup.com
GA #361412

WIDESPREAD
COMMERCIAL GROUP



Urban Land Institute

In 2021 the City of Doraville partnered with the Urban Land Institute (ULI) for a Technical Assistance Panel (TAP) focusing on redeveloping the downtown Doraville Area. The presentation and final report are linked below.



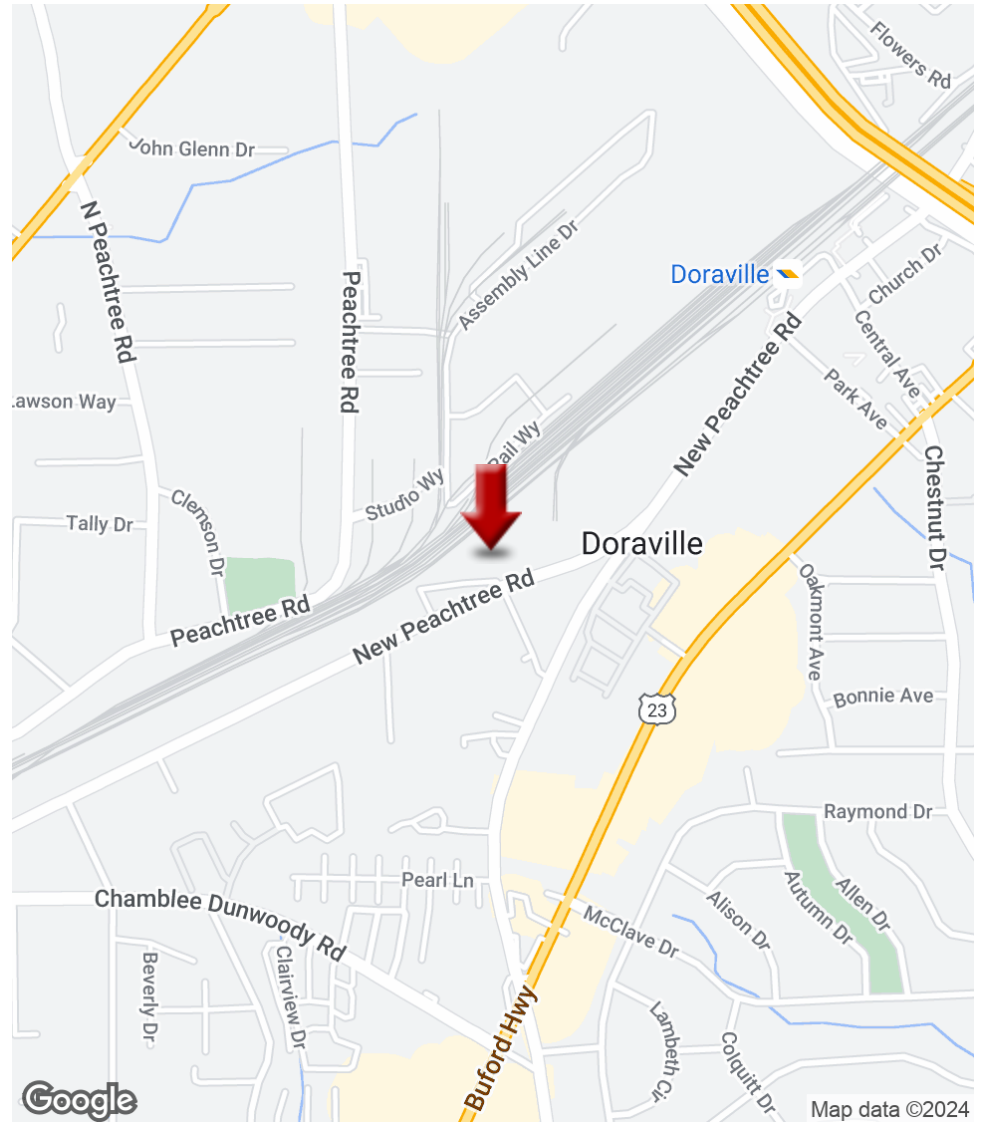
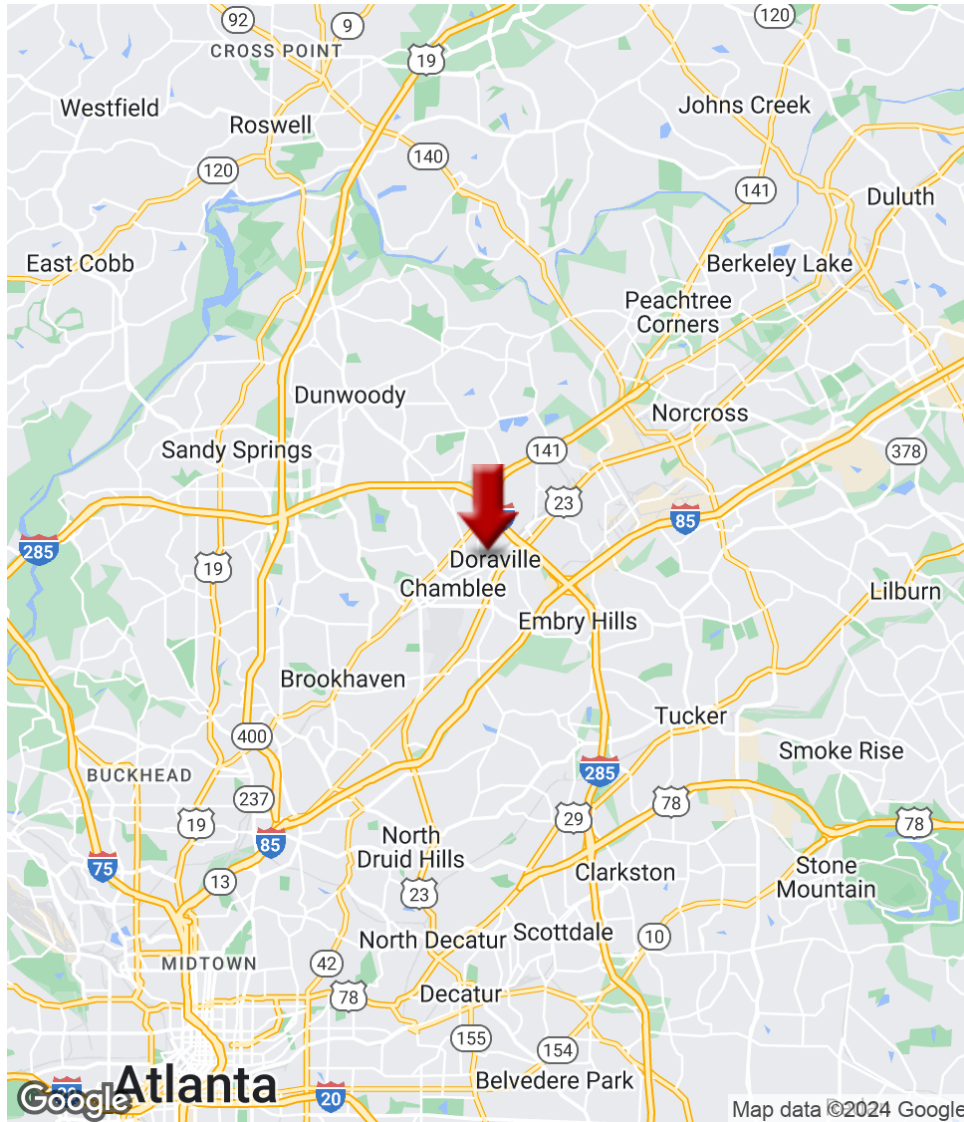
Each Office Independently Owned and Operated widespreadgroup.com

We obtained the information above from sources we believe to be reliable. However, we have not verified its accuracy and make no guarantee, warranty or representation about it. It is submitted subject to the possibility of errors, omissions, change of price, rental or other conditions, prior sale, lease or financing, or withdrawal without notice. We include projections, opinions, assumptions or estimates for example only, and they may not represent current or future performance of the property. You and your tax and legal advisors should conduct your own investigation of the property and transaction.

LAND FOR SALE

5788 S PEACHTREE

5788 New Peachtree Rd, Doraville, GA 30340



WIDESPREAD COMMERCIAL LLC
866.694.1374
1816 Briarwood Industrial Ct,
Suite A

DANNY GLUSMAN
Broker
O: 404.465.3941
C: 404.822.9193
dglusman@widespreadgroup.com
GA #361412

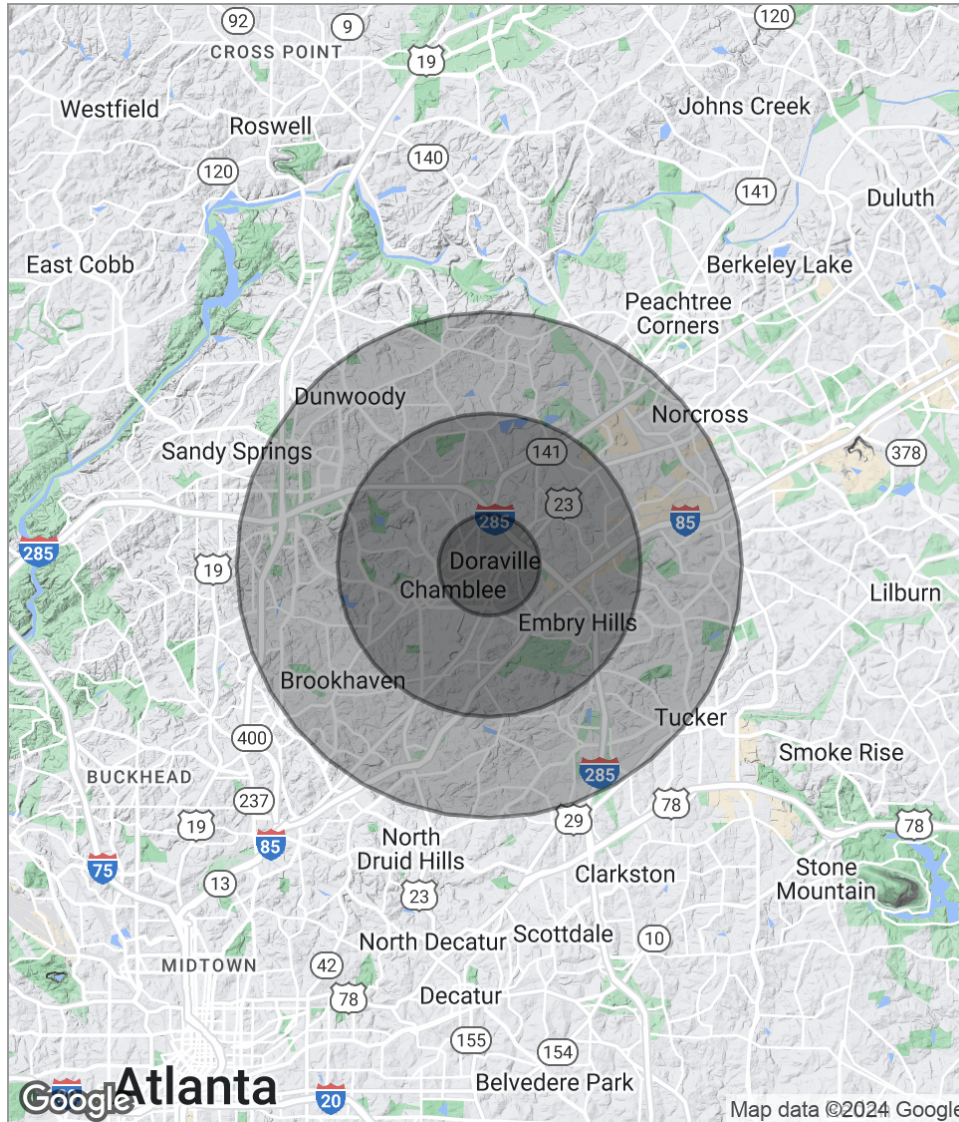
WIDESPREAD
COMMERCIAL GROUP

Each Office Independently Owned and Operated widespreadgroup.com

We obtained the information above from sources we believe to be reliable. However, we have not verified its accuracy and make no guarantee, warranty or representation about it. It is submitted subject to the possibility of errors, omissions, change of price, rental or other conditions, prior sale, lease or financing, or withdrawal without notice. We include projections, opinions, assumptions or estimates for example only, and they may not represent current or future performance of the property. You and your tax and legal advisors should conduct your own investigation of the property and transaction.

5788 S PEACHTREE

5788 New Peachtree Rd, Doraville, GA 30340



POPULATION

	1 MILE	3 MILES	5 MILES
Total Population	7,619	85,113	244,893
Median Age	30.0	32.6	34.1
Median Age (Male)	29.8	32.2	33.6
Median Age (Female)	30.0	32.7	34.8

HOUSEHOLDS & INCOME

	1 MILE	3 MILES	5 MILES
Total Households	2,662	33,373	97,966
# Of Persons Per HH	2.9	2.6	2.5
Average HH Income	\$53,811	\$72,191	\$85,811
Average House Value	\$228,660	\$255,567	\$353,504

* Demographic data derived from 2020 ACS - US Census

WIDESPREAD COMMERCIAL LLC
866.694.1374
1816 Briarwood Industrial Ct,
Suite A

DANNY GLUSMAN
Broker
O: 404.465.3941
C: 404.822.9193
dglusman@widespreadgroup.com
GA #361412

WIDESPREAD
COMMERCIAL GROUP

Each Office Independently Owned and Operated widespreadgroup.com

We obtained the information above from sources we believe to be reliable. However, we have not verified its accuracy and make no guarantee, warranty or representation about it. It is submitted subject to the possibility of errors, omissions, change of price, rental or other conditions, prior sale, lease or financing, or withdrawal without notice. We include projections, opinions, assumptions or estimates for example only, and they may not represent current or future performance of the property. You and your tax and legal advisors should conduct your own investigation of the property and transaction.