

PROPERTY FOR LEASE

**25130 Southfield Rd**  
Southfield, MI 48075

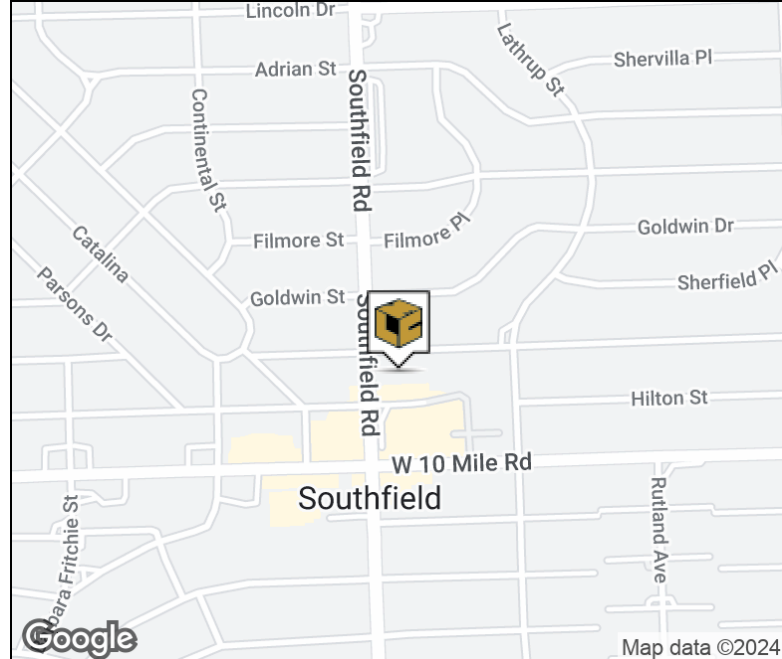


**L. MASON CAPITANI**  
CORFAC INTERNATIONAL



### Property Highlights

- Two-Story Multi-Tenant Medical Building
- 22,060 Square Foot Building
- 842 to 3,214 Square Feet Available for Lease
- Recently Renovated with High-end Finishes
- Close Proximity to Providence Hospital
- Excellent Owner/User/Investment Opportunity
- Surgical Center in Building
- Monument Signage
- Covered Parking & Gated Lot



### FOR MORE INFORMATION:

**Aaron Smith**

Vice President  
248.637.3515  
asmith@lmcap.com



CONNECT WITH US

**248.637.9700 | [www.LMCap.com](http://www.LMCap.com)**

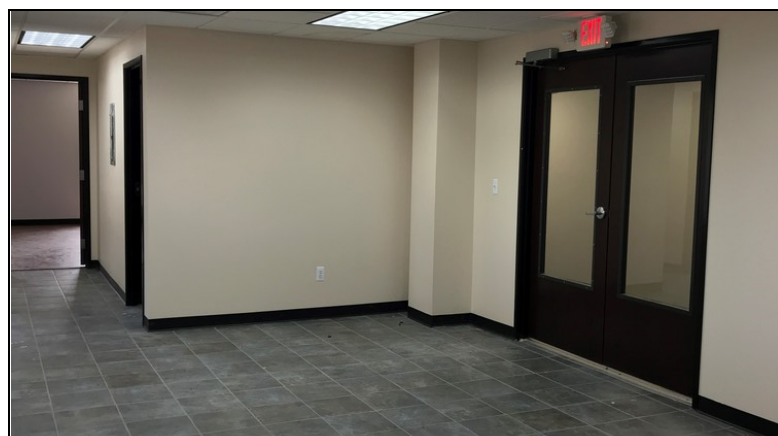
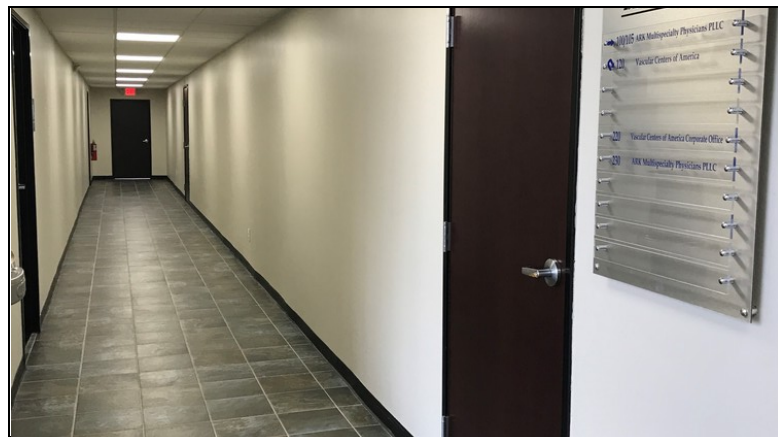
Information contained herein was obtained from sources deemed to be reliable but is not guaranteed. Subjects to prior sales, changes of price or withdrawal.

PROPERTY FOR LEASE

**25130 Southfield Rd**  
Southfield, MI 48075



## ADDITIONAL PHOTOS



### FOR MORE INFORMATION:

**Aaron Smith**  
Vice President  
248.637.3515  
asmith@lmcap.com



CONNECT WITH US

**248.637.9700 | www.LMCap.com**

Information contained herein was obtained from sources deemed to be reliable but is not guaranteed. Subjects to prior sales, changes of price or withdrawal.



PROPERTY FOR LEASE

**25130 Southfield Rd**  
Southfield, MI 48075



**L. MASON CAPITANI**  
CORFAC INTERNATIONAL

**PROPERTY DETAILS**

**Location Information**

Street Address	25130 Southfield Rd
City, State, Zip	Southfield, MI 48075
County	Oakland
Nearest Highway	
Nearest Highway	I-696

**Building Information**

Building Size	22,060 SF
Building Class	B
Occupancy %	68.7%
Tenancy	Multiple
Number of Floors	2
Average Floor Size	11,030 SF
Year Built	1971
Year Last Renovated	2017
Gross Leasable Area	22,060 SF
Load Factor	13.0

Lease Rate

**\$12.00 SF/yr  
NNN**

**Property Information**

Property Type	Office
Zoning	Office
Property Subtype	Office Building
Lot Size	1.18 Acres
APN #	24-24-352-001

**Parking & Transportation**

Parking Type	87 Surface & 20 Covered
Parking Ratio	5.0
Number of Parking Spaces	107

**Available Suites**

Suite 110 - 989 SF	Undisclosed
Suite 130 - 842 SF	\$12.00 NNN
Suite 200 - 3,214 SF	\$12.00 NNN
Suite 210 - 1,869 SF	\$12.00 NNN

**FOR MORE INFORMATION:**

**Aaron Smith**

Vice President  
248.637.3515  
asmith@lmcap.com



CONNECT WITH US

**248.637.9700 | www.LMCap.com**

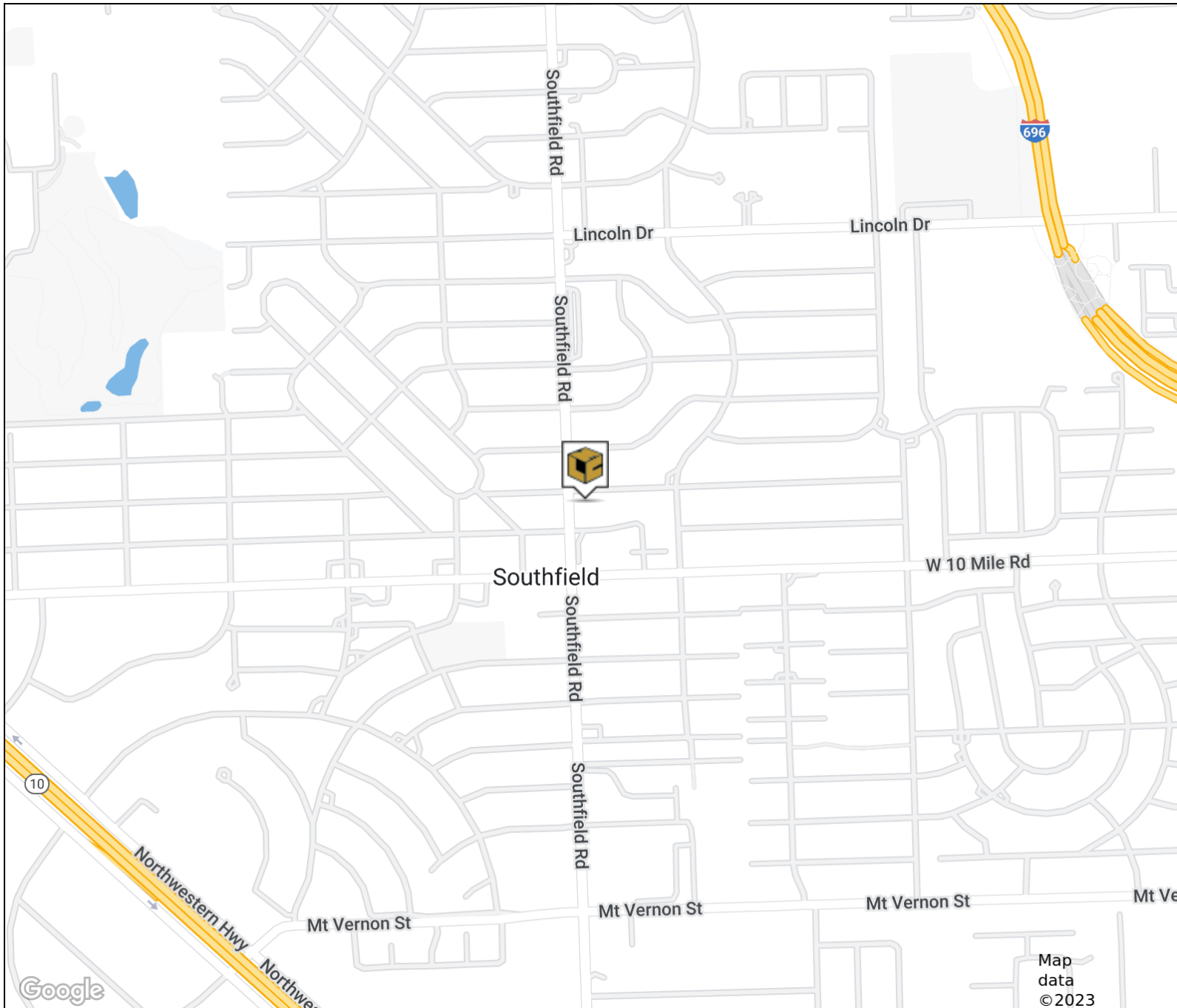
Information contained herein was obtained from sources deemed to be reliable but is not guaranteed. Subjects to prior sales, changes of price or withdrawal.

PROPERTY FOR LEASE

**25130 Southfield Rd**  
Southfield, MI 48075



**L. MASON CAPITANI**  
CORFAC INTERNATIONAL



FOR MORE INFORMATION:

**Aaron Smith**

Vice President

248.637.3515

asmith@lmcap.com



CONNECT WITH US

**248.637.9700 | [www.LMCap.com](http://www.LMCap.com)**

Information contained herein was obtained from sources deemed to be reliable but is not guaranteed. Subjects to prior sales, changes of price or withdrawal.

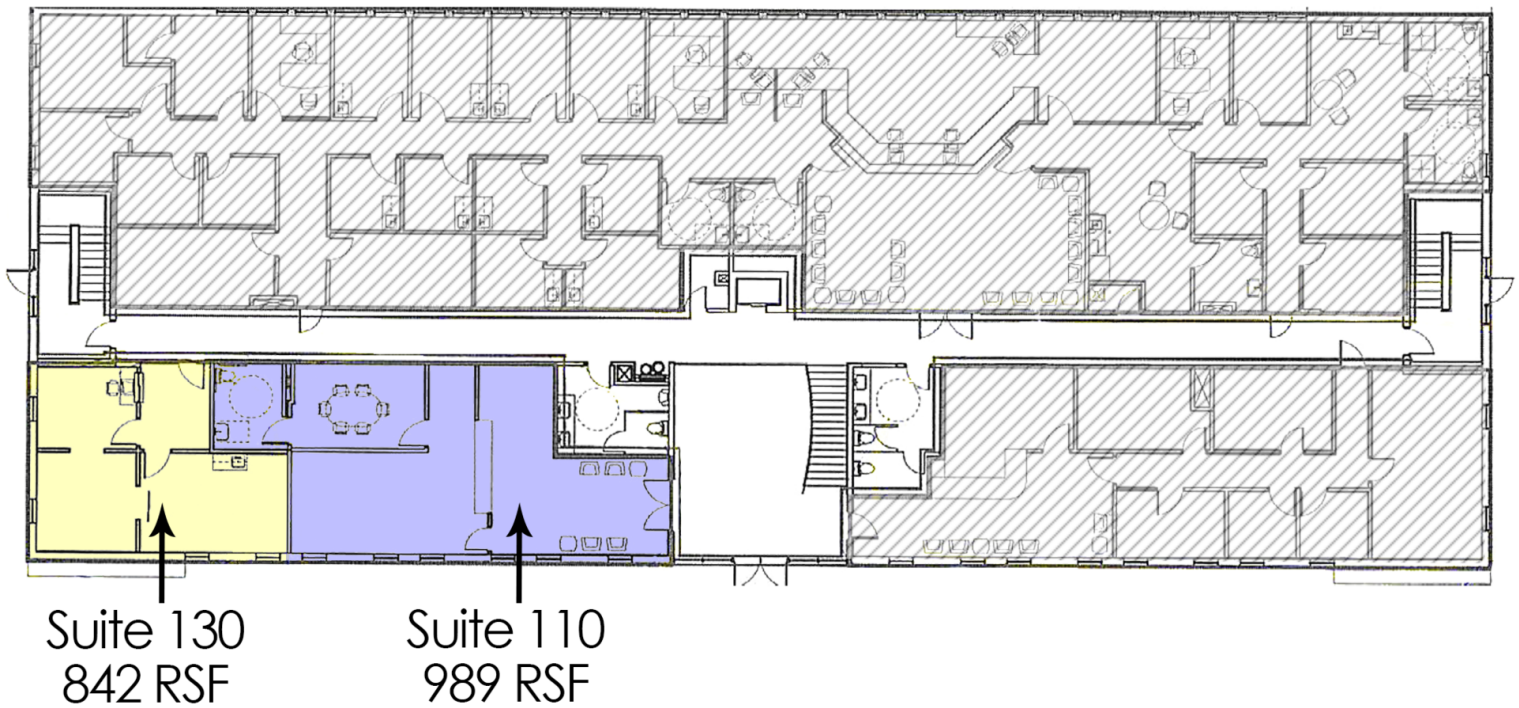
PROPERTY FOR LEASE

**25130 Southfield Rd**  
Southfield, MI 48075



**L. MASON CAPITANI**  
CORFAC INTERNATIONAL

## FIRST FLOOR PLAN



### Available Spaces

Suite	Tenant	Size (SF)	Lease Type	Lease Rate
Suite 110	Available	989 SF	Full Service	Undisclosed
Suite 130	Available	842 SF	NNN	\$12.00 SF/yr

### FOR MORE INFORMATION:

**Aaron Smith**

Vice President  
248.637.3515  
asmith@lmcap.com



CONNECT WITH US

**248.637.9700 | www.LMCap.com**

Information contained herein was obtained from sources deemed to be reliable but is not guaranteed. Subjects to prior sales, changes of price or withdrawal.

PROPERTY FOR LEASE

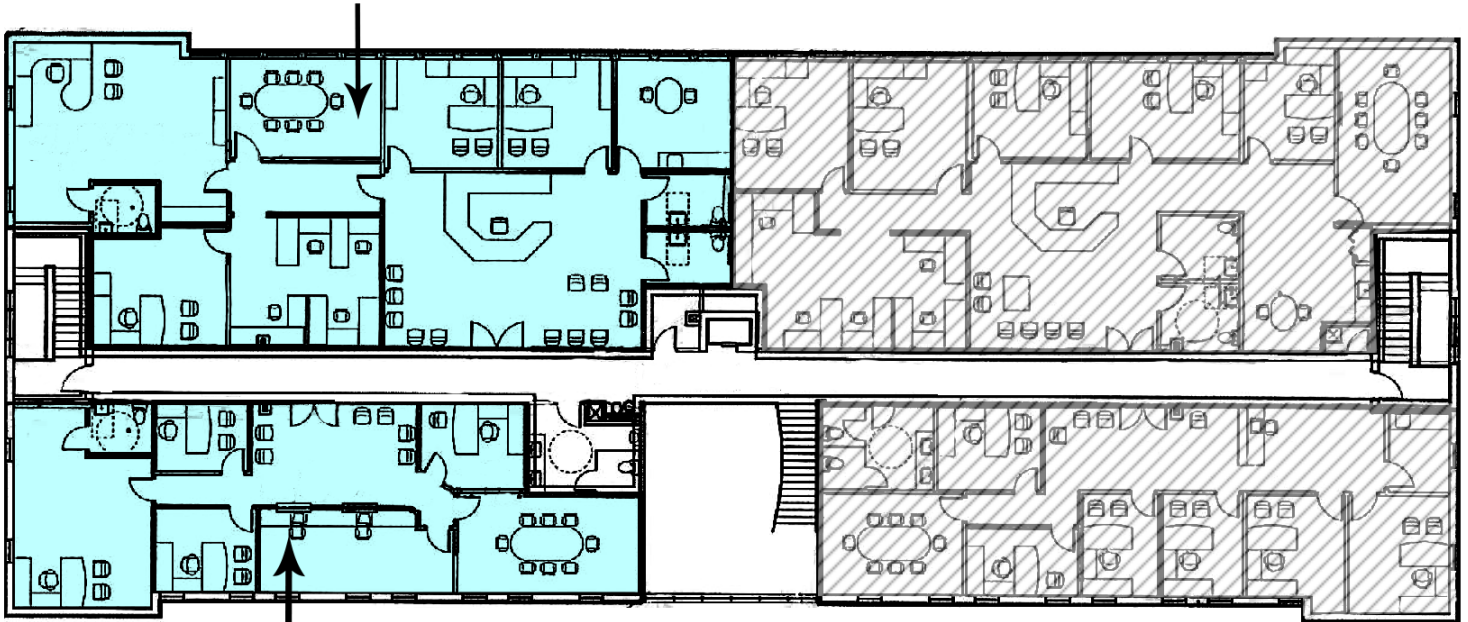
**25130 Southfield Rd**  
Southfield, MI 48075



**L. MASON CAPITANI**  
CORFAC INTERNATIONAL

**SECOND FLOOR PLAN**

Suite 200  
3,214 RSF



Suite 210  
1,869 RSF

**Available Spaces**

Suite	Tenant	Size (SF)	Lease Type	Lease Rate
Suite 200	Available	3,214 SF	NNN	\$12.00 SF/yr
Suite 210	Available	1,869 SF	NNN	\$12.00 SF/yr

**FOR MORE INFORMATION:**

**Aaron Smith**

Vice President  
248.637.3515  
asmith@lmcap.com



CONNECT WITH US

**248.637.9700 | www.LMCap.com**

Information contained herein was obtained from sources deemed to be reliable but is not guaranteed. Subjects to prior sales, changes of price or withdrawal.