

## 2+/- ACRE COMMERCIAL LAND FOR SALE



### PROPERTY DESCRIPTION

2+/- Acre Commercial Site.  
Great Retail and Office location.  
Signalized intersection.  
385+/- feet of frontage on SR 15A.  
Zoning Permitted Uses include: General/Professional Offices, Financial Institutions, Medical Office, Drugstores & Pharmacies, Day Care Facilities, Restaurants including Fast Food or Drive-Thru, Grocery, Retail Sales, etc.

### LOCATION DESCRIPTION

Located at the southwest corner of Beresford Avenue and SR 15A with 385+/- feet of frontage on SR 15A and 616+/- feet of frontage on Spring Garden Avenue.  
Approximately 6 miles to Interstate 4.

### LOCATION ADDRESS

915 S. Spring Garden Avenue  
Deland, FL 32720

### JOHN W. TROST, CCIM

Principal | Senior Advisor  
O: 386.301.4581 | C: 386.295.5723  
john.trost@svn.com

### OFFERING SUMMARY

SALE PRICE:	\$750,000
LOT SIZE:	2+/- Acres
PARCEL NO:	7020-00-00-0070
TRAFFIC COUNT:	28,000 AADT
ZONING:	BR, Business Retail

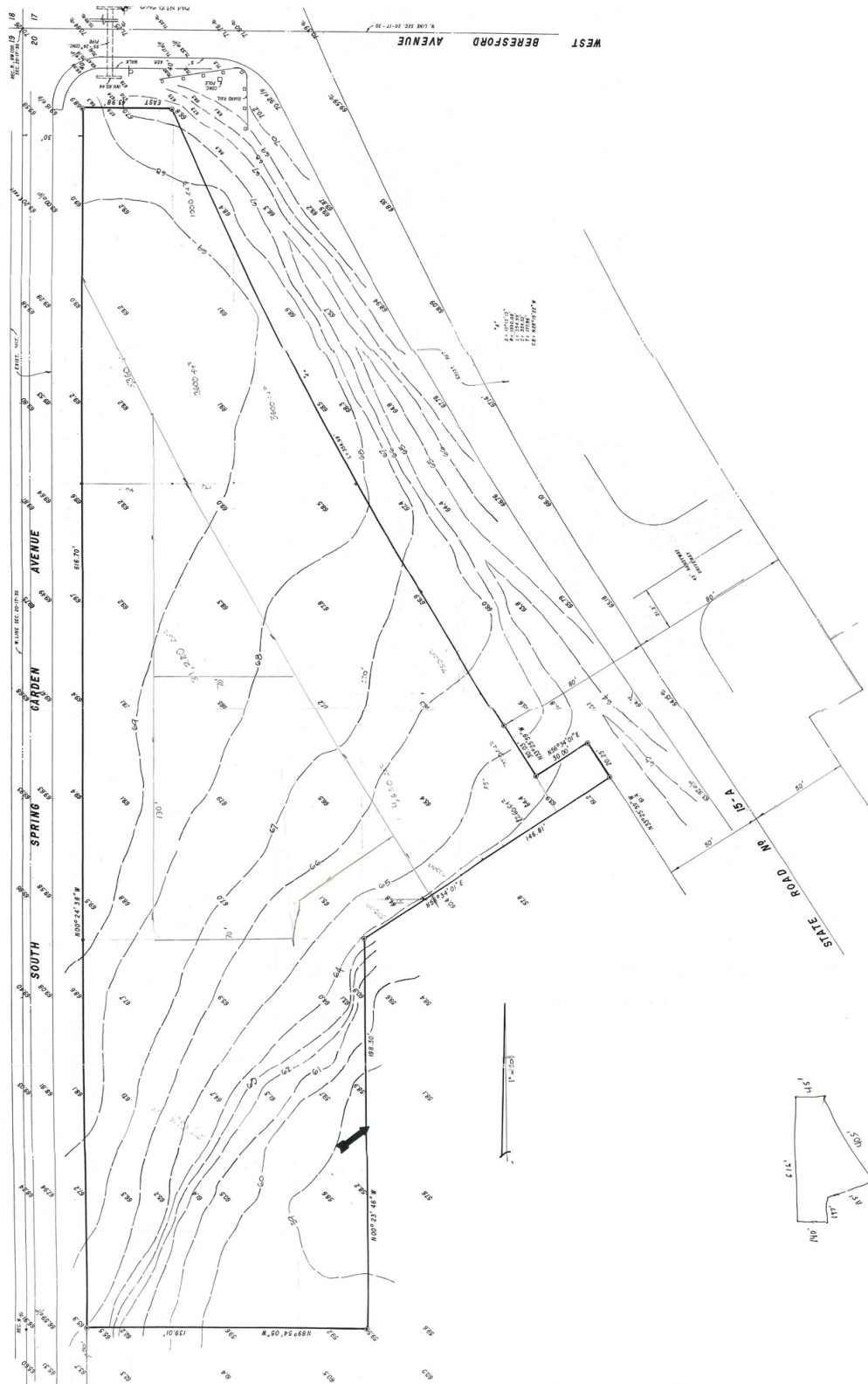
DEMOGRAPHICS	1 MILE	3 MILES	5 MILES
TOTAL HOUSEHOLDS	2,610	16,204	28,716
TOTAL POPULATION	7,246	41,975	73,390
AVERAGE HH INCOME	\$60,394	\$68,307	\$72,767

COMMERCIAL LAND FOR SALE | 915 S. Spring Garden Avenue Deland, FL 32720

We obtained the information above from sources we believe to be reliable. However, we have not verified its accuracy and make no guarantee, warranty or representation about it. It is submitted subject to the possibility of errors, omissions, change of price, rental or other conditions, prior sale, lease or financing, or withdrawal without notice. We include projections, opinions, assumptions or estimates for example only, and they may not represent current or future performance of the property. You and your tax and legal advisors should conduct your own investigation of the property and transaction. All SVN offices are independently owned and operated.



# SURVEY



**JOHN W. TROST, CCIM**

Principal | Senior Advisor

O: 386.301.4581 | C: 386.295.5723

john.trost@svn.com

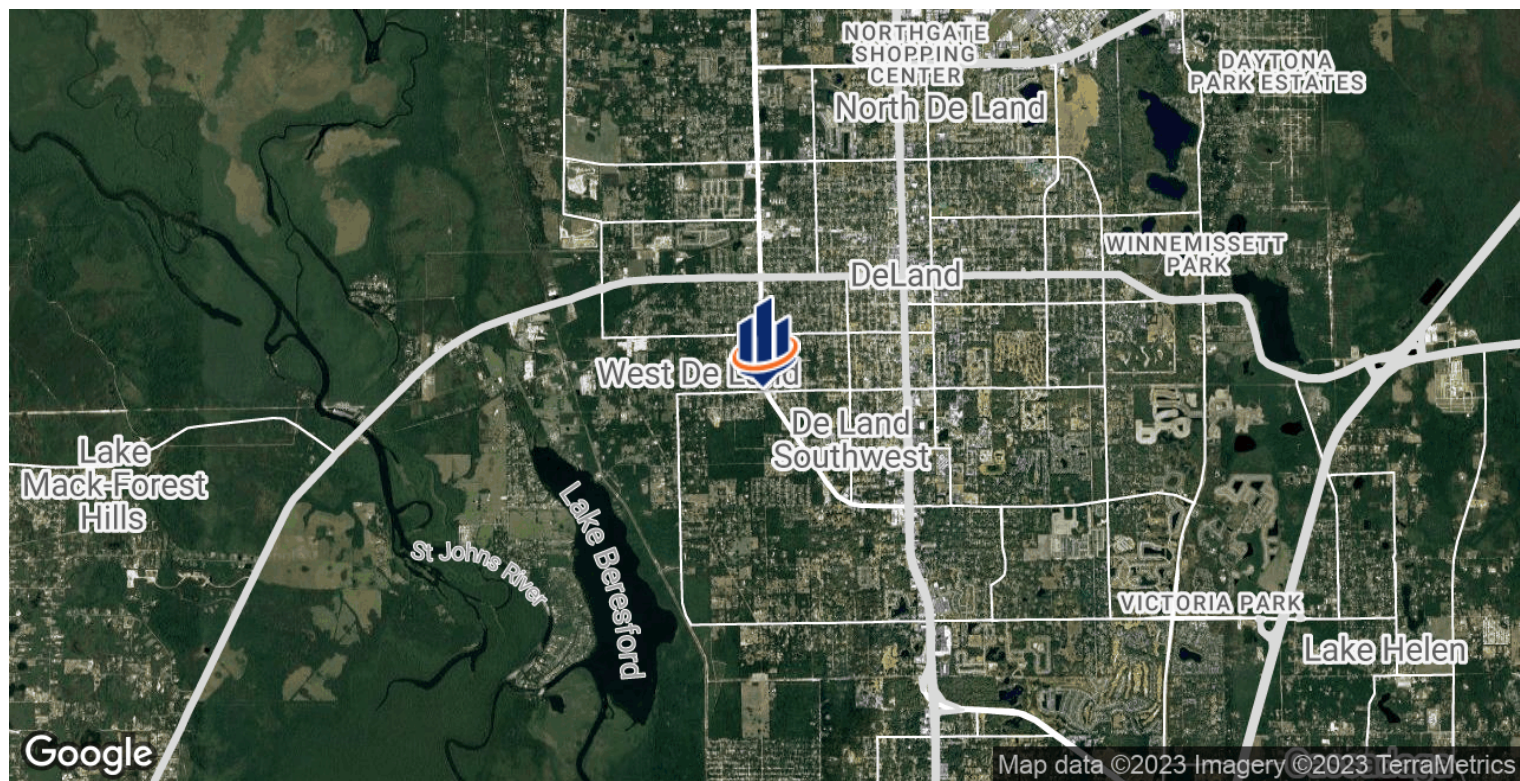
**COMMERCIAL LAND FOR SALE** | 915 S. Spring Garden Avenue Deland, FL 32720

We obtained the information above from sources we believe to be reliable. However, we have not verified its accuracy and make no guarantee, warranty or representation about it. It is submitted subject to the possibility of errors, omissions, change of price, rental or other conditions, prior sale, lease or financing, or withdrawal without notice. We include projections, opinions, assumptions or estimates for example only, and they may not represent current or future performance of the property. You and your tax and legal advisors should conduct your own investigation of the property and transaction. All SVN offices are independently owned and operated.





## LOCATION MAP



**JOHN W. TROST, CCIM**  
Principal | Senior Advisor  
O: 386.301.4581 | C: 386.295.5723  
john.trost@svn.com

**COMMERCIAL LAND FOR SALE** | 915 S. Spring Garden Avenue DeLand, FL 32720

We obtained the information above from sources we believe to be reliable. However, we have not verified its accuracy and make no guarantee, warranty or representation about it. It is submitted subject to the possibility of errors, omissions, change of price, rental or other conditions, prior sale, lease or financing, or withdrawal without notice. We include projections, opinions, assumptions or estimates for example only, and they may not represent current or future performance of the property. You and your tax and legal advisors should conduct your own investigation of the property and transaction. All SVN offices are independently owned and operated.

