

# Market Square Shopping Center

1442 STATE ROAD 436, CASSELBERRY, FL 32707

## Location Overview

Market Square Shopping Center is conveniently located approx. eleven miles north of the Orlando International Airport, and seven miles North-East of the Orlando Central Business District. The Center is located in the City of Casselberry with the surrounding area characterized by a mixture of residential and commercial uses.

Seminole County is adjacent to the Metro Orlando area which currently contains a population of just over one million people. Seminole County has grown to have a current population of roughly 293,000 people which has created the highly dense residential community present today. Tenants in the Center benefit from this growth and the fact it has occurred in the neighborhood area surrounding Market Square.

FOR MORE INFORMATION | [MILLENNIA-PARTNERS.COM](http://MILLENNIA-PARTNERS.COM)

PRESENTED BY

**BRIAN GRANDSTAFF**

407.370.3211

[briang@millenia-partners.com](mailto:briang@millenia-partners.com)

**MICHAEL CURTIS**

407.952.0089

[mcurtis@millenia-partners.com](mailto:mcurtis@millenia-partners.com)



## EXECUTIVE SUMMARY

1442 STATE ROAD 436, CASSELBERRY, FL 32707

# Market Square Shopping Center



## OFFERING SUMMARY

Building Size:	120,000 SF
Lot Size:	9.83 Acres
Zoning:	CG
Market:	Casselberry / Maitland
Submarket:	Lake Howell
Traffic Count:	113,242 VPD

## PROPERTY HIGHLIGHTS

- Market Square Shopping Center is a 126k SF Community Center located on the major North-South Hwy in Eastern Orlando.
- The property has excellent visibility to State Road 436
- The current traffic count: 113,242 cars/day on SR-436 & 59,660 cars/day on Howell Branch Rd
- Key Anchors: Big Lots, 7-11, Harbor Freight, and Dollar Tree
- The Center has 572 parking spaces.

SPACES	LEASE RATE	SPACE SIZE
#1022 (C3)	\$15.00 SF/yr	2,325 SF
#1016 (C2)	\$15.00 SF/yr	2,975 SF
#1064 (B)	Negotiable	28,400 SF

PRESENTED BY

**BRIAN GRANDSTAFF**

407.370.3211

briang@millenia-partners.com

**MICHAEL CURTIS**

407.952.0089

mcurtis@millenia-partners.com

RETAIL PROPERTY

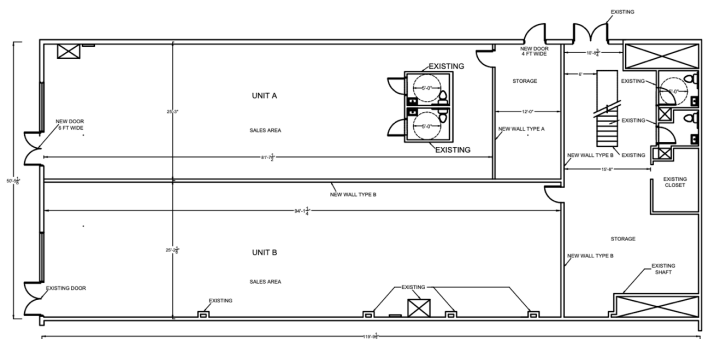
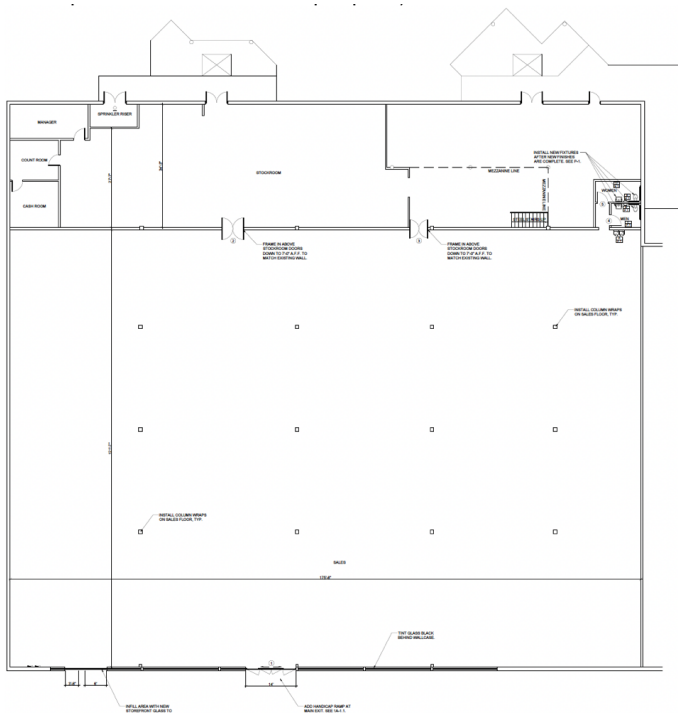
# For Lease



## ADDITIONAL PHOTOS

1442 STATE ROAD 436, CASSELBERRY, FL 32707

# Market Square Shopping Center



PRESENTED BY

**BRIAN GRANDSTAFF**

407.370.3211

briang@millenia-partners.com

**MICHAEL CURTIS**

407.952.0089

mcurtis@millenia-partners.com

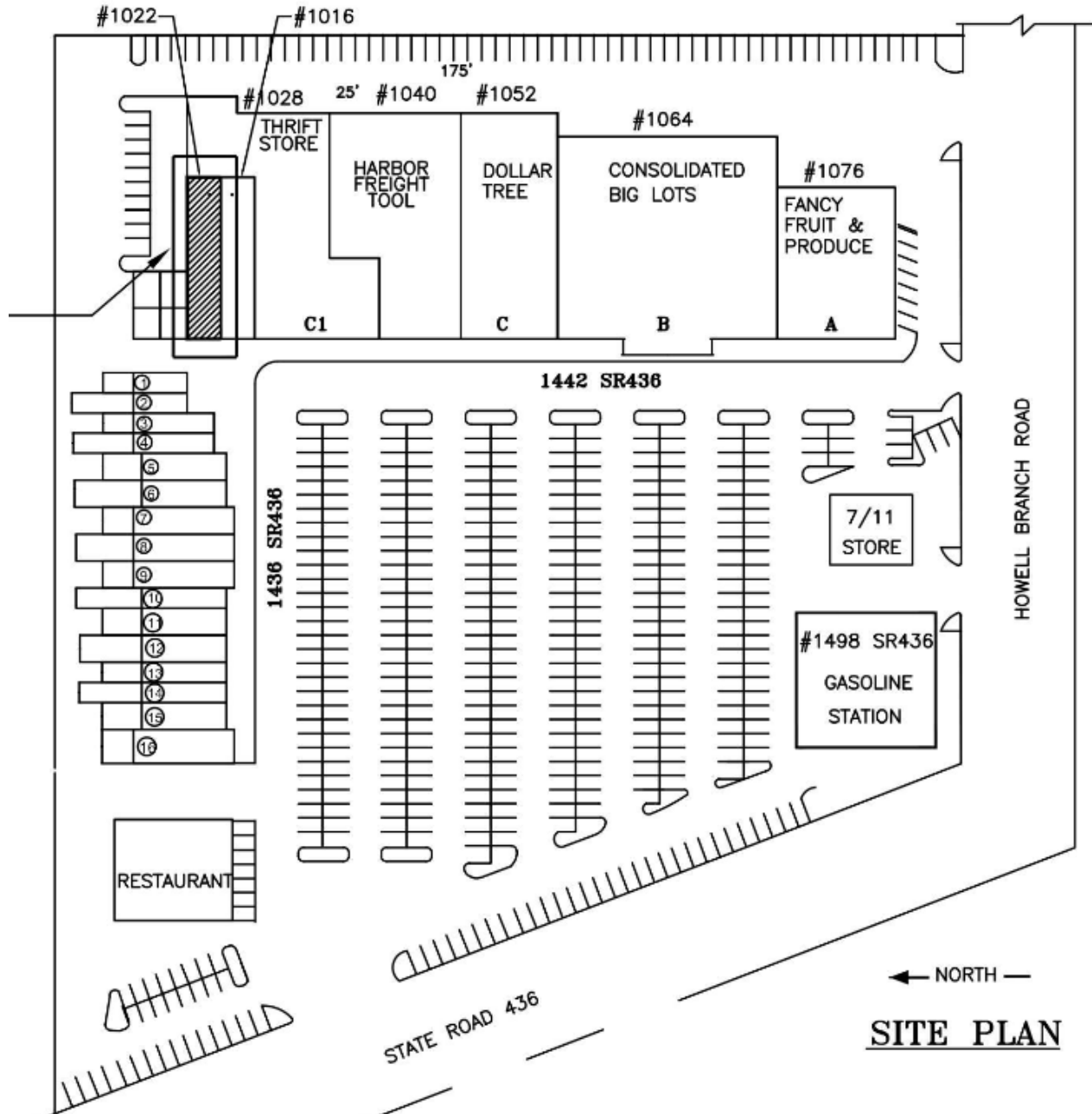
RETAIL PROPERTY

# For Lease

## FLOORPLAN

1442 STATE ROAD 436, CASSELBERRY, FL 32707

# Market Square Shopping Center



1442 SR-436, Casselberry, FL 32707

PRESENTED BY

**BRIAN GRANDSTAFF**

407.370.3211

briang@millenia-partners.com

**MICHAEL CURTIS**

407.952.0089

mcurtis@millenia-partners.com

RETAIL PROPERTY

# For Lease



## IN DEPTH RETAILER MAP

1442 STATE ROAD 436, CASSELBERRY, FL 32707

# Market Square Shopping Center



PRESENTED BY

**BRIAN GRANDSTAFF**

407.370.3211

briang@millenia-partners.com

**MICHAEL CURTIS**

407.952.0089

mcurtis@millenia-partners.com

RETAIL PROPERTY

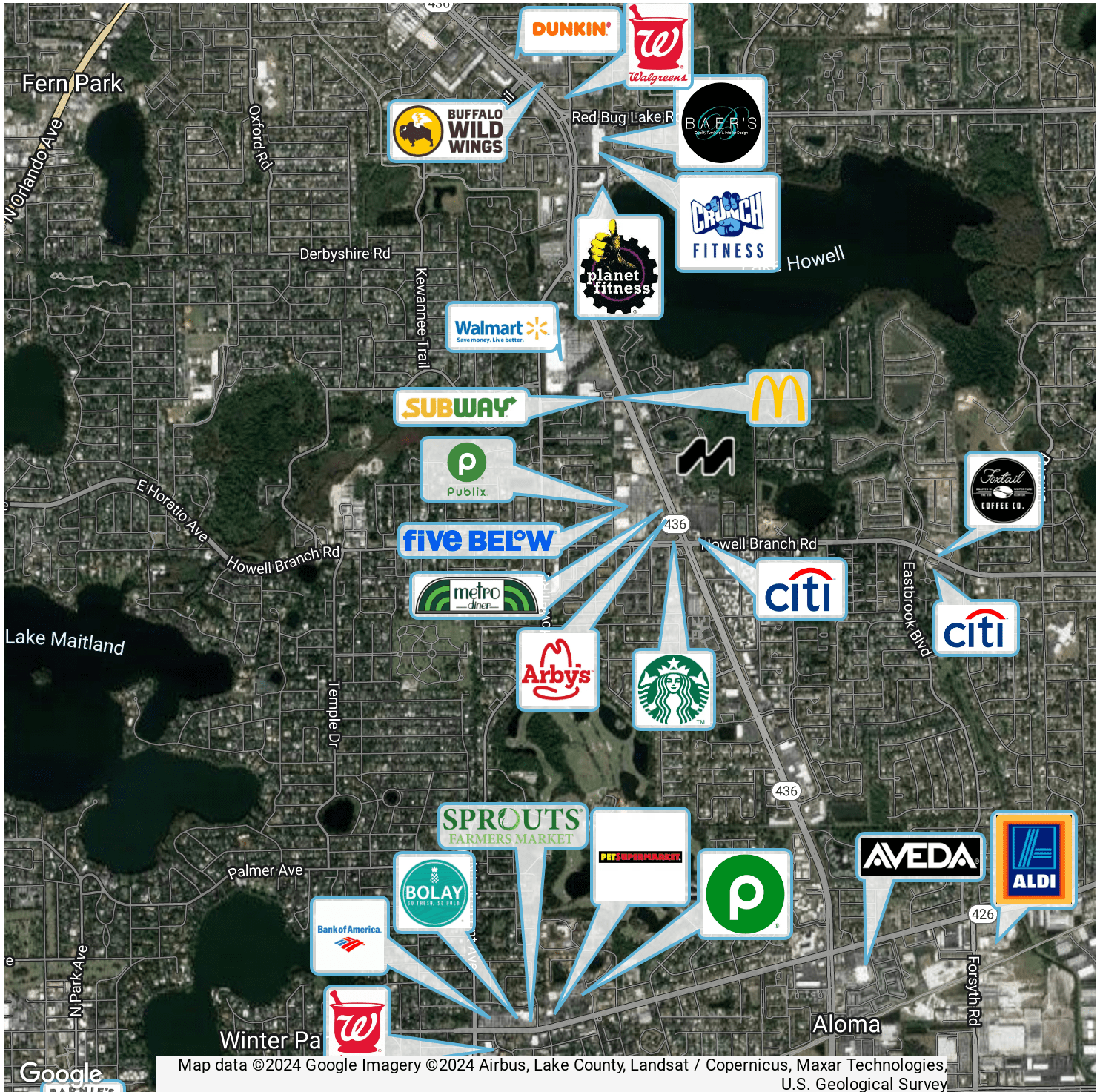
# For Lease



## LOCATION MAP

1442 STATE ROAD 436, CASSELBERRY, FL 32707

# Market Square Shopping Center



Google  
EARTH

Map data ©2024 Google Imagery ©2024 Airbus, Lake County, Landsat / Copernicus, Maxar Technologies, U.S. Geological Survey

PRESENTED BY

**BRIAN GRANDSTAFF**

407.370.3211

briang@millenia-partners.com

**MICHAEL CURTIS**

407.952.0089

mcurtis@millenia-partners.com

RETAIL PROPERTY

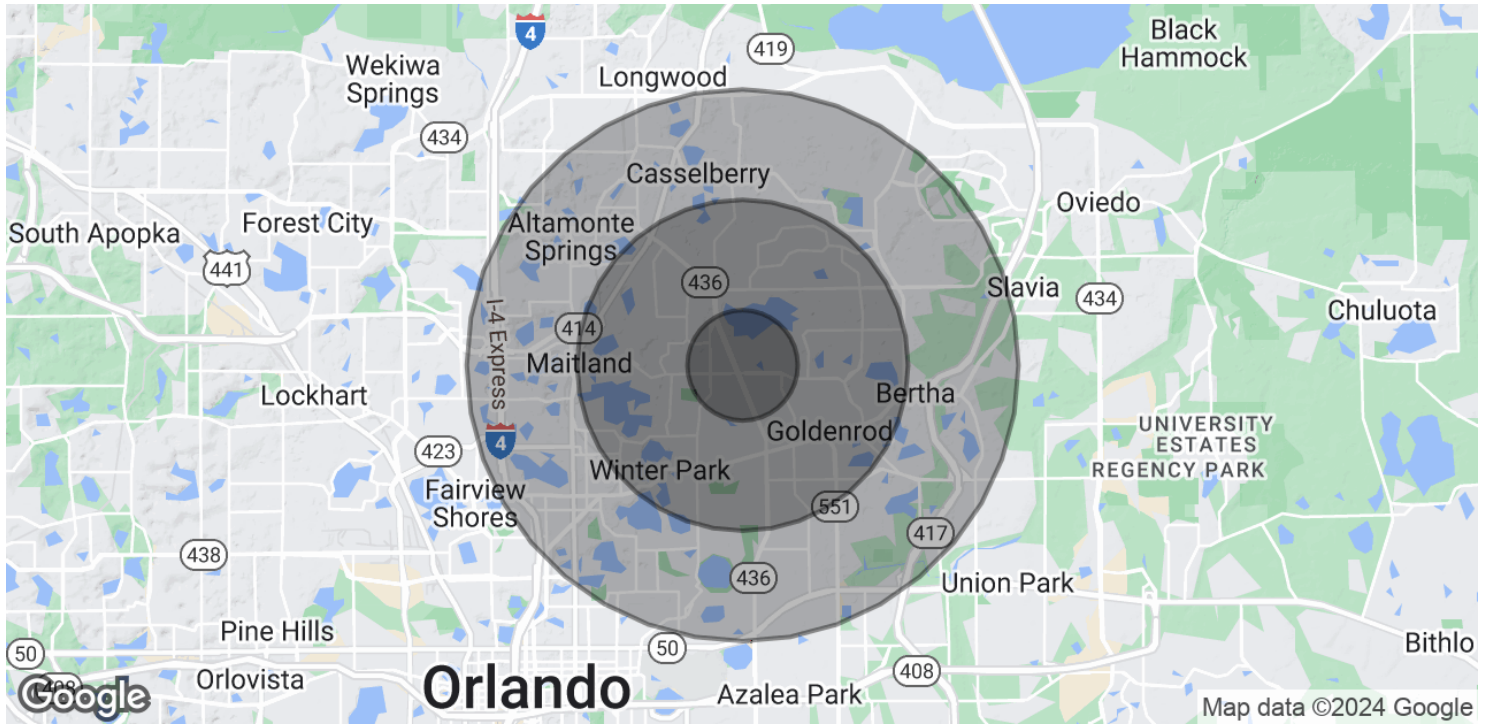
# For Lease



## DEMOGRAPHICS MAP & REPORT

1442 STATE ROAD 436, CASSELBERRY, FL 32707

# Market Square Shopping Center



### POPULATION

#### 1 MILE

#### 3 MILES

#### 5 MILES

Total Population	10,508	95,847	231,416
Average Age	39.7	39.0	37.9
Average Age (Male)	37.4	36.8	36.4
Average Age (Female)	41.1	41.2	39.7

### HOUSEHOLDS & INCOME

#### 1 MILE

#### 3 MILES

#### 5 MILES

Total Households	4,708	38,369	91,646
# of Persons per HH	2.2	2.5	2.5
Average HH Income	\$56,326	\$77,638	\$75,867
Average House Value	\$232,707	\$311,060	\$328,455

\* Demographic data derived from 2020 ACS - US Census

PRESENTED BY

**BRIAN GRANDSTAFF**

407.370.3211

briang@millenia-partners.com

**MICHAEL CURTIS**

407.952.0089

mcurtis@millenia-partners.com

RETAIL PROPERTY

# For Lease