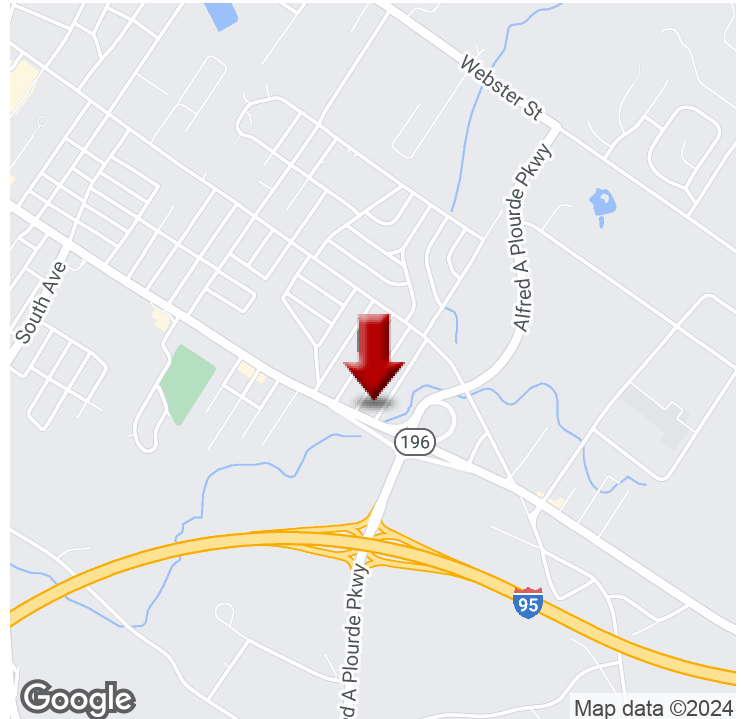
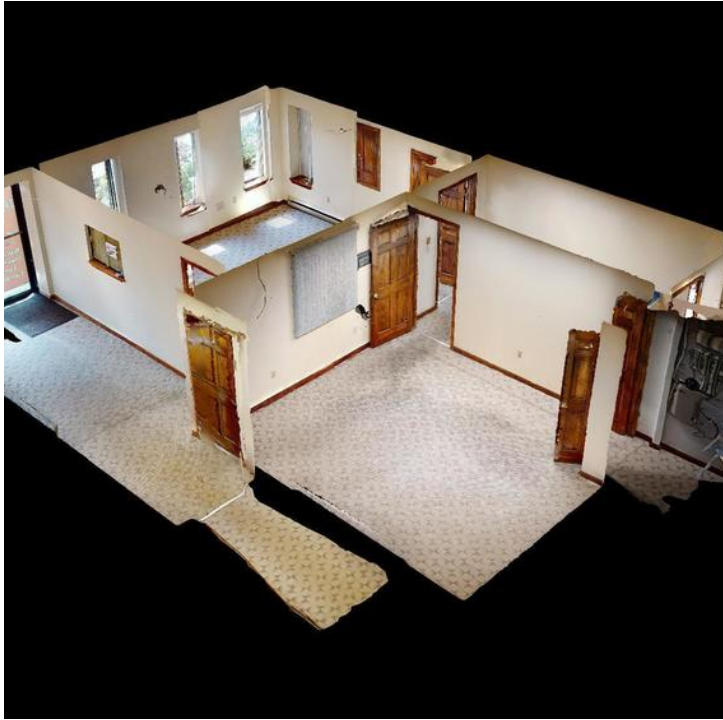


OFFICE FOR LEASE

1292 LISBON STREET

1292 Lisbon Street, Lewiston, ME 04240



OFFERING SUMMARY

LEASE RATE:	\$1,200.00 per month (Full Service)
BUILDING SIZE:	737 SF
ZONING:	Highway Business
MARKET:	Commercial

PROPERTY OVERVIEW

Ideal location for retail or office space. Great for service type businesses. There is ample parking for all of your vehicles. Located right off interstate I-95. Near Bus lines. Located 30 minutes from Portland. High traffic count of 14,000+ daily.

PROPERTY HIGHLIGHTS

- Easy access right off Maine Turnpike
- High Traffic Counts 14,000+ daily
- Central Location
- Great visibility

KW COMMERCIAL
50 Sewall Street,
Second Floor
Portland, ME 04102

DAVID COSTELLO
Associate Broker/Business Broker
O: 207.879.9800
C: 207.754.7494
dcostello@rockwaterme.com
ME #BA923558

We obtained the information above from sources we believe to be reliable. However, we have not verified its accuracy and make no guarantee, warranty or representation about it. It is submitted subject to the possibility of errors, omissions, change of price, rental or other conditions, prior sale, lease or financing, or withdrawal without notice. We include projections, opinions, assumptions or estimates for example only, and they may not represent current or future performance of the property. You and your tax and legal advisors should conduct your own investigation of the property and transaction.

Each Office Independently Owned and Operated kwcommercial.com

OFFICE FOR LEASE

1292 LISBON STREET

1292 Lisbon Street, Lewiston, ME 04240



KW COMMERCIAL
50 Sewall Street,
Second Floor
Portland, ME 04102

DAVID COSTELLO
Associate Broker/Business Broker
O: 207.879.9800
C: 207.754.7494
dcostello@rockwaterme.com
ME #BA923558

We obtained the information above from sources we believe to be reliable. However, we have not verified its accuracy and make no guarantee, warranty or representation about it. It is submitted subject to the possibility of errors, omissions, change of price, rental or other conditions, prior sale, lease or financing, or withdrawal without notice. We include projections, opinions, assumptions or estimates for example only, and they may not represent current or future performance of the property. You and your tax and legal advisors should conduct your own investigation of the property and transaction.

Each Office Independently Owned and Operated kwcommercial.com

OFFICE FOR LEASE

1292 LISBON STREET

1292 Lisbon Street, Lewiston, ME 04240



KW COMMERCIAL
50 Sewall Street,
Second Floor
Portland, ME 04102

DAVID COSTELLO
Associate Broker/Business Broker
O: 207.879.9800
C: 207.754.7494
dcostello@rockwaterme.com
ME #BA923558

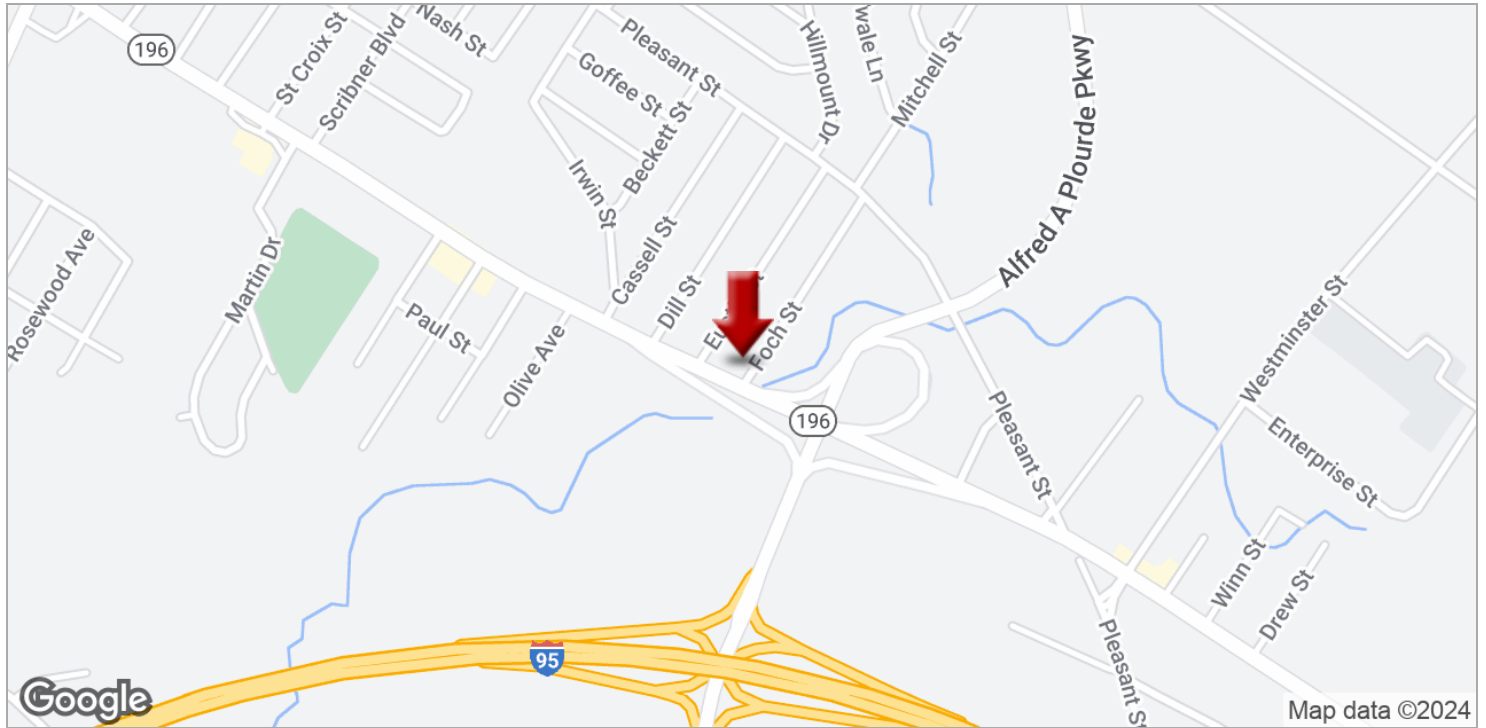
We obtained the information above from sources we believe to be reliable. However, we have not verified its accuracy and make no guarantee, warranty or representation about it. It is submitted subject to the possibility of errors, omissions, change of price, rental or other conditions, prior sale, lease or financing, or withdrawal without notice. We include projections, opinions, assumptions or estimates for example only, and they may not represent current or future performance of the property. You and your tax and legal advisors should conduct your own investigation of the property and transaction.

Each Office Independently Owned and Operated kwcommercial.com

OFFICE FOR LEASE

1292 LISBON STREET

1292 Lisbon Street, Lewiston, ME 04240



KW COMMERCIAL
50 Sewall Street,
Second Floor
Portland, ME 04102

DAVID COSTELLO
Associate Broker/Business Broker
O: 207.879.9800
C: 207.754.7494
dcostello@rockwaterme.com
ME #BA923558

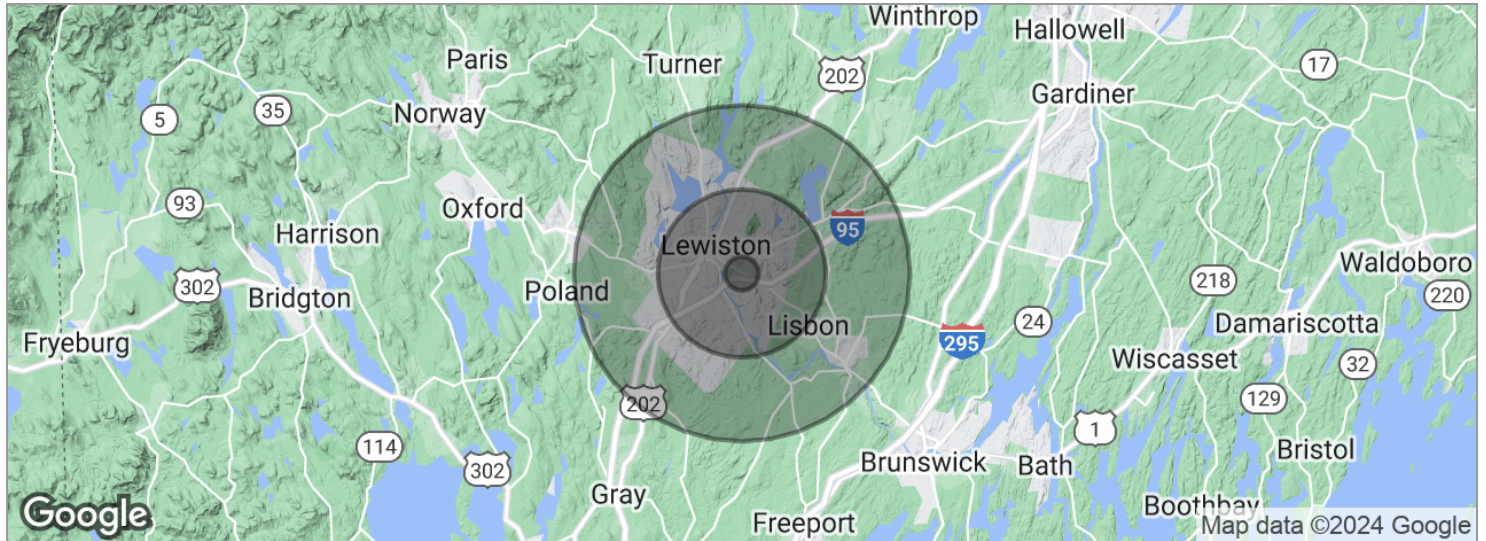
We obtained the information above from sources we believe to be reliable. However, we have not verified its accuracy and make no guarantee, warranty or representation about it. It is submitted subject to the possibility of errors, omissions, change of price, rental or other conditions, prior sale, lease or financing, or withdrawal without notice. We include projections, opinions, assumptions or estimates for example only, and they may not represent current or future performance of the property. You and your tax and legal advisors should conduct your own investigation of the property and transaction.

Each Office Independently Owned and Operated kwcommercial.com

OFFICE FOR LEASE

1292 LISBON STREET

1292 Lisbon Street, Lewiston, ME 04240



POPULATION	1 MILE	5 MILES	10 MILES
Total population	2,193	65,865	111,365
Median age	42.0	37.5	38.5
Median age (male)	40.8	35.2	36.3
Median age (Female)	42.7	38.6	39.6
HOUSEHOLDS & INCOME	1 MILE	5 MILES	10 MILES
Total households	976	27,670	45,730
# of persons per HH	2.2	2.4	2.4
Average HH income	\$51,916	\$47,460	\$52,968
Average house value	\$157,539	\$168,783	\$172,480

* Demographic data derived from 2020 ACS - US Census

KW COMMERCIAL
50 Sewall Street,
Second Floor
Portland, ME 04102

DAVID COSTELLO
Associate Broker/Business Broker
O: 207.879.9800
C: 207.754.7494
dcostello@rockwaterme.com
ME #BA923558

We obtained the information above from sources we believe to be reliable. However, we have not verified its accuracy and make no guarantee, warranty or representation about it. It is submitted subject to the possibility of errors, omissions, change of price, rental or other conditions, prior sale, lease or financing, or withdrawal without notice. We include projections, opinions, assumptions or estimates for example only, and they may not represent current or future performance of the property. You and your tax and legal advisors should conduct your own investigation of the property and transaction.

Each Office Independently Owned and Operated [kwcommercial.com](https://www.kwcommercial.com)

OFFICE FOR LEASE

1292 LISBON STREET

1292 Lisbon Street, Lewiston, ME 04240



DAVID COSTELLO

Associate Broker/Business Broker

dcostello@rockwaterme.com

Direct: 207.879.9800 | Cell: 207.754.7494

ME #BA923558 // FL #BK3533767

PROFESSIONAL BACKGROUND

Dave Costello has been a business leader in the Greater Portland community for more than 30 years. He previously owned and operated Sun Media Group, whose holdings included companies from Southern, Central, and Western Maine. Within the industry his roles included buying, selling, managing, and developing businesses. In commercial real estate, and also worked with Daigle Commercial Group, specializing in the hospitality industry.

Dave has extensive experience in management, technology, marketing, and customer service. He brings excellent negotiation skills, a broad knowledge of the local business market, and a passion for helping people facilitate business goals. Dave is an innovative business leader who provides a broad scope of possibilities for his clients using a full range of professional resources.

Rock Water Group of KW Commercial offers business consulting and commercial real estate services to owners and family-owned businesses, backed by more than three decades in the Maine business market.

Dave is a licensed broker in Florida, specializing in assisting clients in locating investment properties, acquiring businesses, or securing second homes.

EDUCATION

BS Rochester Institute of Technology
MBA Husson University

MEMBERSHIPS

GPBR - Greater Portland Board of Realtors
MCAR - Maine Commercial Real Estate Association
NECPE- New England Commercial Property Exchange
NAR- National Association of Realtors
Nanles Fl Area Board of RFAI TORS® (NAROR®)

KW Commercial Rock Water
50 Sewall Street Second Floor
Portland, ME 04102
207.879.9800

KW COMMERCIAL
50 Sewall Street,
Second Floor
Portland, ME 04102

DAVID COSTELLO
Associate Broker/Business Broker
O: 207.879.9800
C: 207.754.7494
dcostello@rockwaterme.com
ME #BA923558

We obtained the information above from sources we believe to be reliable. However, we have not verified its accuracy and make no guarantee, warranty or representation about it. It is submitted subject to the possibility of errors, omissions, change of price, rental or other conditions, prior sale, lease or financing, or withdrawal without notice. We include projections, opinions, assumptions or estimates for example only, and they may not represent current or future performance of the property. You and your tax and legal advisors should conduct your own investigation of the property and transaction.

Each Office Independently Owned and Operated kwcommercial.com