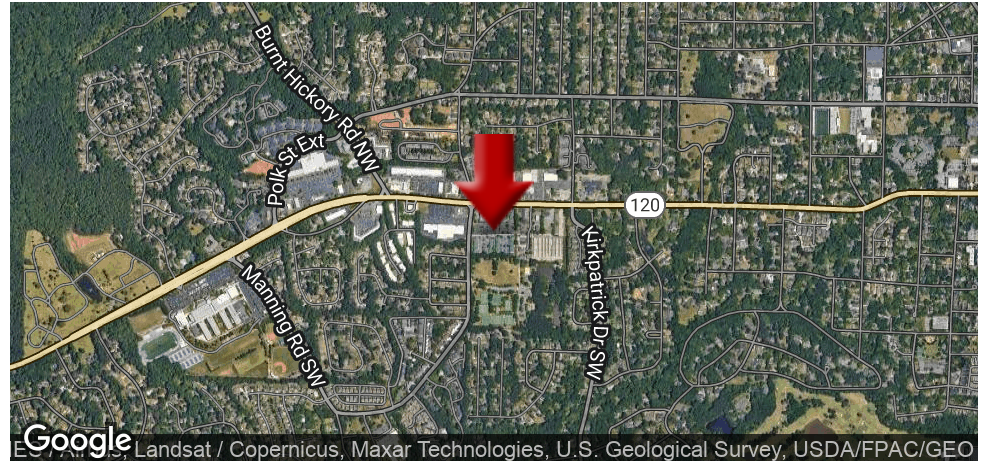


# WHITLOCK OFFICE CONDO FOR LEASE

707 Whitlock Ave A-37, Marietta, GA 30064



## OFFERING SUMMARY

<b>NUMBER OF UNITS:</b>	1
<b>AVAILABLE SF:</b>	2,632 SF
<b>LEASE RATE:</b>	\$15.50 SF/yr
<b>LOT SIZE:</b>	0.06 Acres
<b>BUILDING SIZE:</b>	2,632
<b>RENOVATED:</b>	2021
<b>ZONING:</b>	General Office
<b>MARKET:</b>	Atlanta
<b>SUBMARKET:</b>	Kennesaw/ Town Center

## PROPERTY OVERVIEW

707 Whitlock is central to Marietta square. Our 2-story office space is one of its kind in the Whitlock office park, with brand new renovations including hardwood floors, new conference room, and light fixtures. This office would be great for financial, medical, and law practices looking to relocate to Marietta.

## PROPERTY HIGHLIGHTS

- 5 minutes from downtown Marietta square
- Great mix of healthcare and law professionals
- 2 story office space
- Renovated May 2021
- Ample parking space

**KW COMMERCIAL**  
804 Town Blvd.,  
Ste. A2040  
Atlanta, GA 30319

**JOHN THOMPSON**  
National Managing Director  
O: 678.506.1006  
C: 678.508.8885  
johnthompson@kwcommercial.com  
GA #179993

**ERIC CLARK**  
Industrial Associate  
O: 470.262.1575  
eclark@kwcommercial.com  
GA #402819

Each Office Independently Owned and Operated [kwcommercial.com](http://kwcommercial.com)

We obtained the information above from sources we believe to be reliable. However, we have not verified its accuracy and make no guarantee, warranty or representation about it. It is submitted subject to the possibility of errors, omissions, change of price, rental or other conditions, prior sale, lease or financing, or withdrawal without notice. We include projections, opinions, assumptions or estimates for example only, and they may not represent current or future performance of the property. You and your tax and legal advisors should conduct your own investigation of the property and transaction.

OFFICE FOR LEASE

# WHITLOCK OFFICE CONDO FOR LEASE

707 Whitlock Ave A-37, Marietta, GA 30064



**KW COMMERCIAL**  
804 Town Blvd.,  
Ste. A2040  
Atlanta, GA 30319

**JOHN THOMPSON**  
National Managing Director  
O: 678.506.1006  
C: 678.508.8885  
johnthompson@kwcommercial.com  
GA #179993

**ERIC CLARK**  
Industrial Associate  
O: 470.262.1575  
eclark@kwcommercial.com  
GA #402819

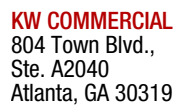
Each Office Independently Owned and Operated [kwcommercial.com](http://kwcommercial.com)

We obtained the information above from sources we believe to be reliable. However, we have not verified its accuracy and make no guarantee, warranty or representation about it. It is submitted subject to the possibility of errors, omissions, change of price, rental or other conditions, prior sale, lease or financing, or withdrawal without notice. We include projections, opinions, assumptions or estimates for example only, and they may not represent current or future performance of the property. You and your tax and legal advisors should conduct your own investigation of the property and transaction.



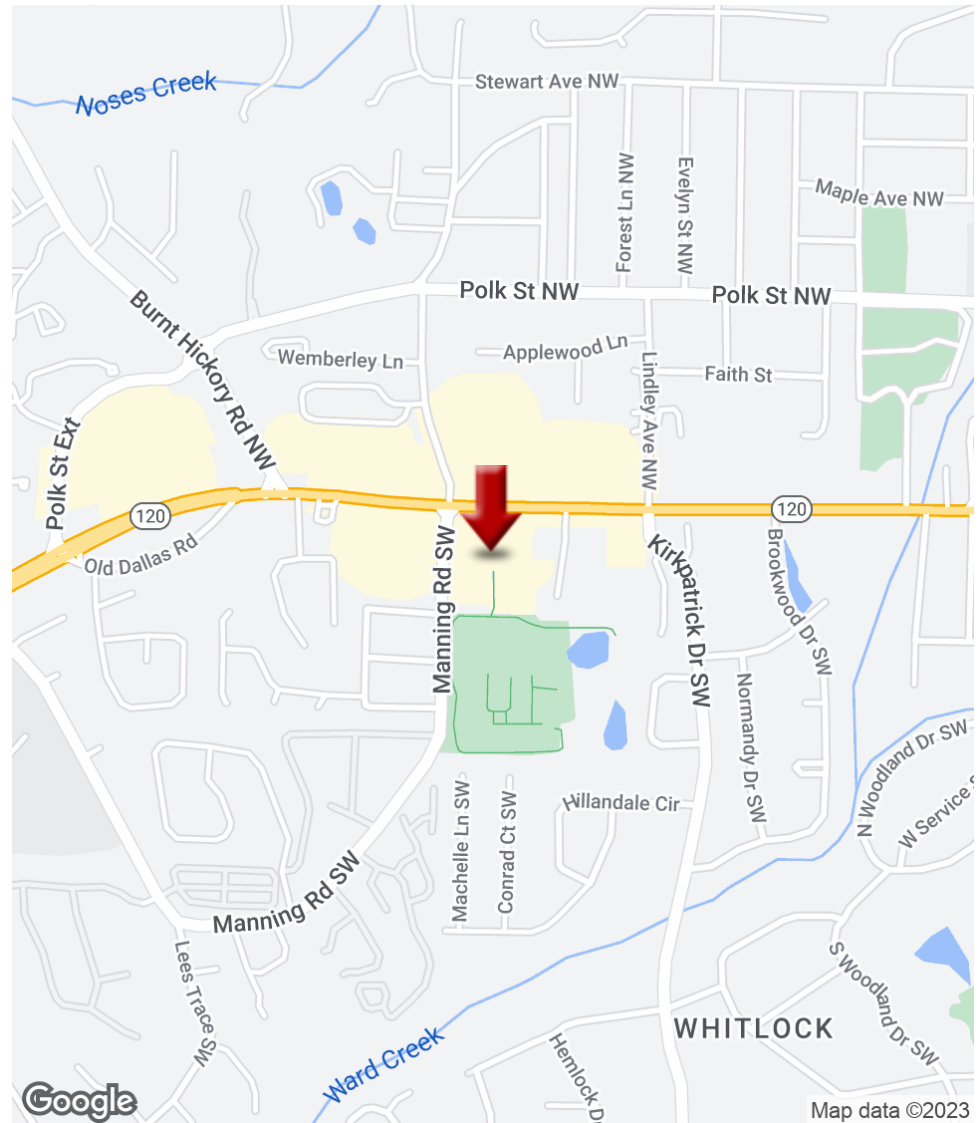


**KW**  
COMMERCIAL



**JOHN THOMPSON**  
National Managing Director  
O: 678.506.1006  
C: 678.508.8885  
johnthompson@kwcommercial.com  
GA #179993

**ERIC CLARK**  
Industrial Associate  
O: 470.262.1575  
eclark@kwcommercial.com  
GA #402819

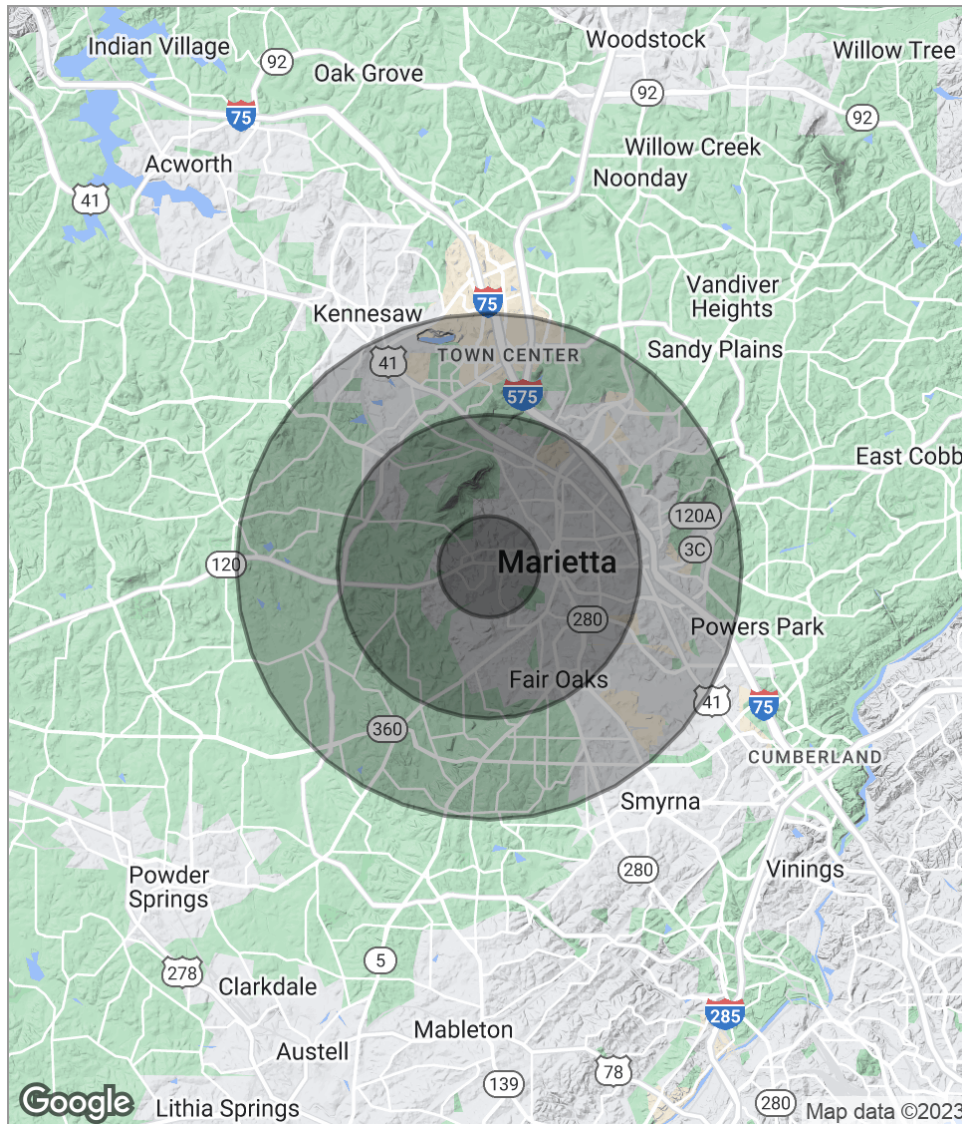


Each Office Independently Owned and Operated [kwcommercial.com](http://kwcommercial.com)

We obtained the information above from sources we believe to be reliable. However, we have not verified its accuracy and make no guarantee, warranty or representation about it. It is submitted subject to the possibility of errors, omissions, change of price, rental or other conditions, prior sale, lease or financing, or withdrawal without notice. We include projections, opinions, assumptions or estimates for example only, and they may not represent current or future performance of the property. You and your tax and legal advisors should conduct your own investigation of the property and transaction.

# WHITLOCK OFFICE CONDO FOR LEASE

707 Whitlock Ave A-37, Marietta, GA 30064



**KW COMMERCIAL**  
804 Town Blvd.,  
Ste. A2040  
Atlanta, GA 30319

**JOHN THOMPSON**  
National Managing Director  
O: 678.506.1006  
C: 678.508.8885  
johnthompson@kwcommercial.com  
GA #179993

**ERIC CLARK**  
Industrial Associate  
O: 470.262.1575  
eclark@kwcommercial.com  
GA #402819

## POPULATION

	1 MILE	3 MILES	5 MILES
Total Population	5,325	56,844	160,478
Median Age	38.8	35.0	33.3
Median Age (Male)	36.9	33.4	32.4
Median Age (Female)	40.9	36.6	34.5

## HOUSEHOLDS & INCOME

	1 MILE	3 MILES	5 MILES
Total Households	2,221	22,427	60,223
# Of Persons Per HH	2.4	2.5	2.7
Average HH Income	\$75,449	\$69,270	\$68,402
Average House Value	\$278,044	\$281,070	\$277,526

*\* Demographic data derived from 2020 ACS - US Census*