



**4160 Holiday St NW**  
Canton, Ohio 44718

SQ FT AVAILABLE	6,560
LEASE RATE	\$11.00/SF
LEASE TYPE	NNN (\$3.98/SF)
PARCEL	1617118
YEAR BUILT	1989
ZONING	JAC-B3
ACRES	1.29

SQ FT	RATE	NNN	MONTHLY
6,560	\$11.00/SF	\$3.98/SF	\$8,189.06

## Property Details

- 6,560/SF medical suite for lease in prime Belden Village location.
- Versatile layout includes (2) patient waiting areas, (7) exam rooms, multiple physician offices, lab, and large admin area.
- Plentiful parking and monument signage.
- Easy access to I-77.

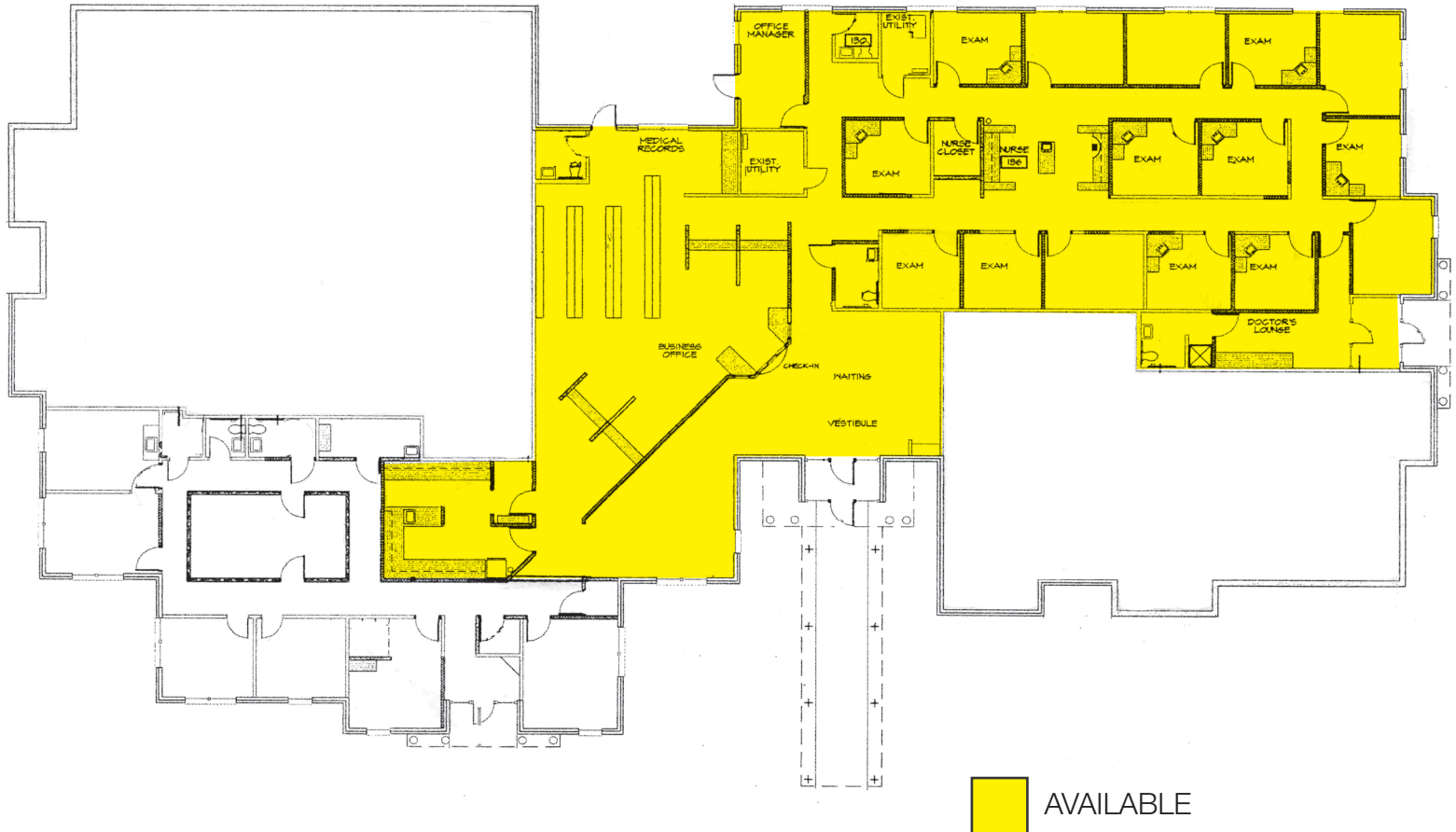
**Dan Spring, SIOR**

P 330 497 6249  
dan@naispring.com

**Kelly Sober, CCIM**

P 330 497 9837  
kelly@naispring.com

4160 Holiday St NW  
Canton, Ohio 44718

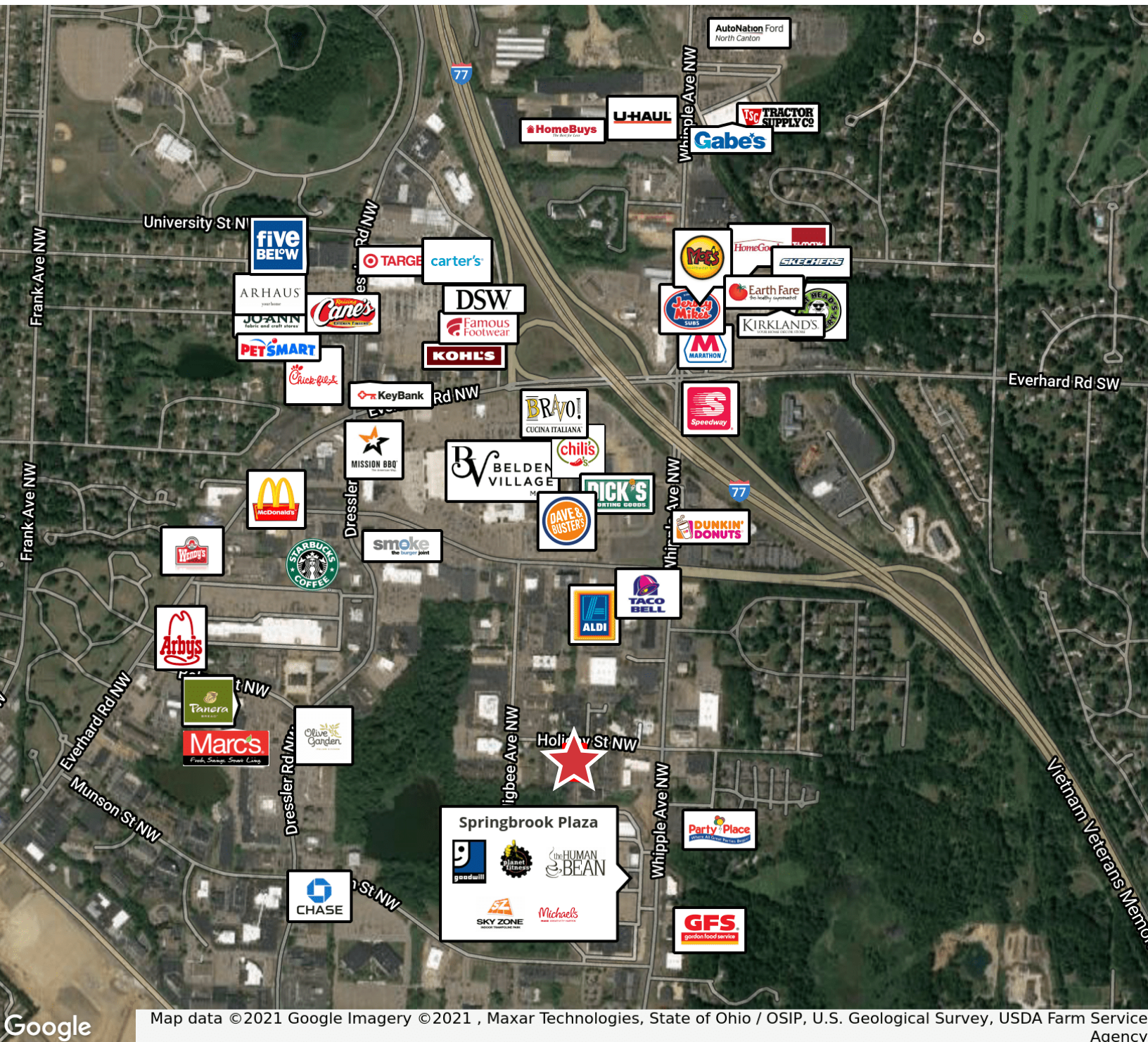


NO WARRANTY OR REPRESENTATION, EXPRESS OR IMPLIED, IS MADE AS TO THE ACCURACY OF THE INFORMATION CONTAINED HEREIN, AND THE SAME IS SUBMITTED SUBJECT TO ERRORS, OMISSIONS, CHANGE OF PRICE, RENTAL OR OTHER CONDITIONS, PRIOR SALE, LEASE OR FINANCING, OR WITHDRAWAL WITHOUT NOTICE, AND OF ANY SPECIAL LISTING CONDITIONS IMPOSED BY OUR PRINCIPALS NO WARRANTIES OR REPRESENTATIONS ARE MADE AS TO THE CONDITION OF THE PROPERTY OR ANY HAZARDS CONTAINED THEREIN ARE ANY TO BE IMPLIED.

8234 Pittsburg Ave NW  
North Canton, OH 44720  
+1 330 966 8800  
[naispring.com](http://naispring.com)



4160 Holiday St NW  
Canton, Ohio 44718



NO WARRANTY OR REPRESENTATION, EXPRESS OR IMPLIED, IS MADE AS TO THE ACCURACY OF THE INFORMATION CONTAINED HEREIN, AND THE SAME IS SUBMITTED SUBJECT TO ERRORS, OMISSIONS, CHANGE OF PRICE, RENTAL OR OTHER SALE CONDITIONS, PRIOR SALE, LEASE OR FINANCING, OR WITHDRAWAL WITHOUT NOTICE, AND OF ANY SPECIAL LISTING CONDITIONS IMPOSED BY OUR PRINCIPALS NO WARRANTIES OR REPRESENTATIONS ARE MADE AS TO THE CONDITION OF THE PROPERTY OR ANY HAZARDS CONTAINED THEREIN ARE ANY TO BE IMPLIED.

8234 Pittsburg Ave NW  
North Canton, OH 44720  
+1 330 966 8800  
naispring.com



4160 Holiday St NW  
Canton, Ohio 44718



NO WARRANTY OR REPRESENTATION, EXPRESS OR IMPLIED, IS MADE AS TO THE ACCURACY OF THE INFORMATION CONTAINED HEREIN, AND THE SAME IS SUBMITTED SUBJECT TO ERRORS, OMISSIONS, CHANGE OF PRICE, RENTAL OR OTHER SALE CONDITIONS, PRIOR SALE, LEASE OR FINANCING, OR WITHDRAWAL WITHOUT NOTICE, AND OF ANY SPECIAL LISTING CONDITIONS IMPOSED BY OUR PRINCIPALS NO WARRANTIES OR REPRESENTATIONS ARE MADE AS TO THE CONDITION OF THE PROPERTY OR ANY HAZARDS CONTAINED THEREIN ARE ANY TO BE IMPLIED.

8234 Pittsburg Ave NW  
North Canton, OH 44720  
+1 330 966 8800  
[naispring.com](http://naispring.com)