

NEW WORLD CORP OF INDIANA 3534

3534 COMMERCE DRIVE, WARSAW, IN 46580

OFFICE BUILDING
FOR LEASE



FOR MORE INFORMATION, CONTACT:

JAN ORBAN BROKER

JAN@BRIANPETERSONGROUP.COM
574.551.0121

BRIAN PETERSON

BPG@BRIANPETERSONGROUP.COM
574.268.1899

2008 E. CENTER STREET WARSAW, IN 46508 BRIANPETERSONGROUP.COM



BRIAN PETERSON
REAL ESTATE



NEW WORLD CORP OF INDIANA 3534

3534 COMMERCE DRIVE, WARSAW, IN 46580



PROPERTY DESCRIPTION

Former North American Title office space, ready for immediate occupancy. Onsite paved parking available at front and rear of unit.

PROPERTY HIGHLIGHTS

- Front Reception Area
- Private Offices
- Conference Room
- Workroom
- Open Work Space
- On Site Parking
- Quick Access to Highway US 30

OFFERING SUMMARY

Lease Rate:	Negotiable
Available SF:	
Lot Size:	0.4 Acres
Building Size:	1,265 SF

DEMOGRAPHICS	1 MILE	5 MILES	10 MILES
Total Households	19	10,323	21,289
Total Population	47	25,347	52,983
Average HH Income	\$54,842	\$58,138	\$59,815

FOR MORE INFORMATION, CONTACT:

JAN ORBAN BROKER

JAN@BRIANPETERSONGROUP.COM
574.551.0121

BRIAN PETERSON

BPG@BRIANPETERSONGROUP.COM
574.268.1899

2008 E. CENTER STREET WARSAW, IN 46508 BRIANPETERSONGROUP.COM

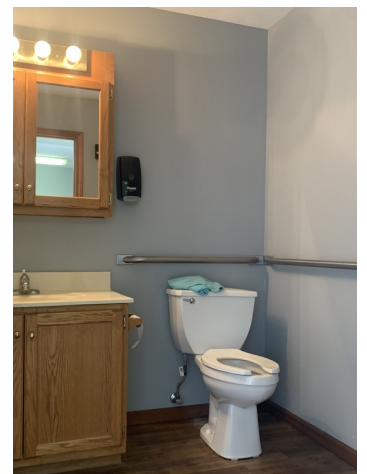
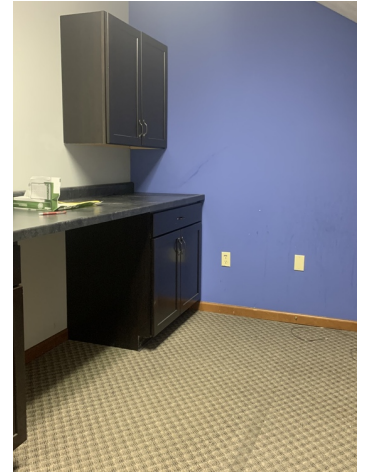


BRIAN PETERSON
REAL ESTATE



NEW WORLD CORP OF INDIANA 3534

3534 COMMERCE DRIVE, WARSAW, IN 46580



FOR MORE INFORMATION, CONTACT:

JAN ORBAN BROKER

JAN@BRIANPETERSONGROUP.COM
574.551.0121

BRIAN PETERSON

BPG@BRIANPETERSONGROUP.COM
574.268.1899

2008 E. CENTER STREET WARSAW, IN 46508 BRIANPETERSONGROUP.COM



BRIAN PETERSON
REAL ESTATE



NEW WORLD CORP OF INDIANA 3534

3534 COMMERCE DRIVE, WARSAW, IN 46580



Map data ©2021 Imagery ©2021, IndianaMap Framework Data, Maxar Technologies, USDA Farm Service Agency

FOR MORE INFORMATION, CONTACT:

JAN ORBAN BROKER

JAN@BRIANPETERSONGROUP.COM
574.551.0121

BRIAN PETERSON

BPG@BRIANPETERSONGROUP.COM
574.268.1899

2008 E. CENTER STREET WARSAW, IN 46508 BRIANPETERSONGROUP.COM

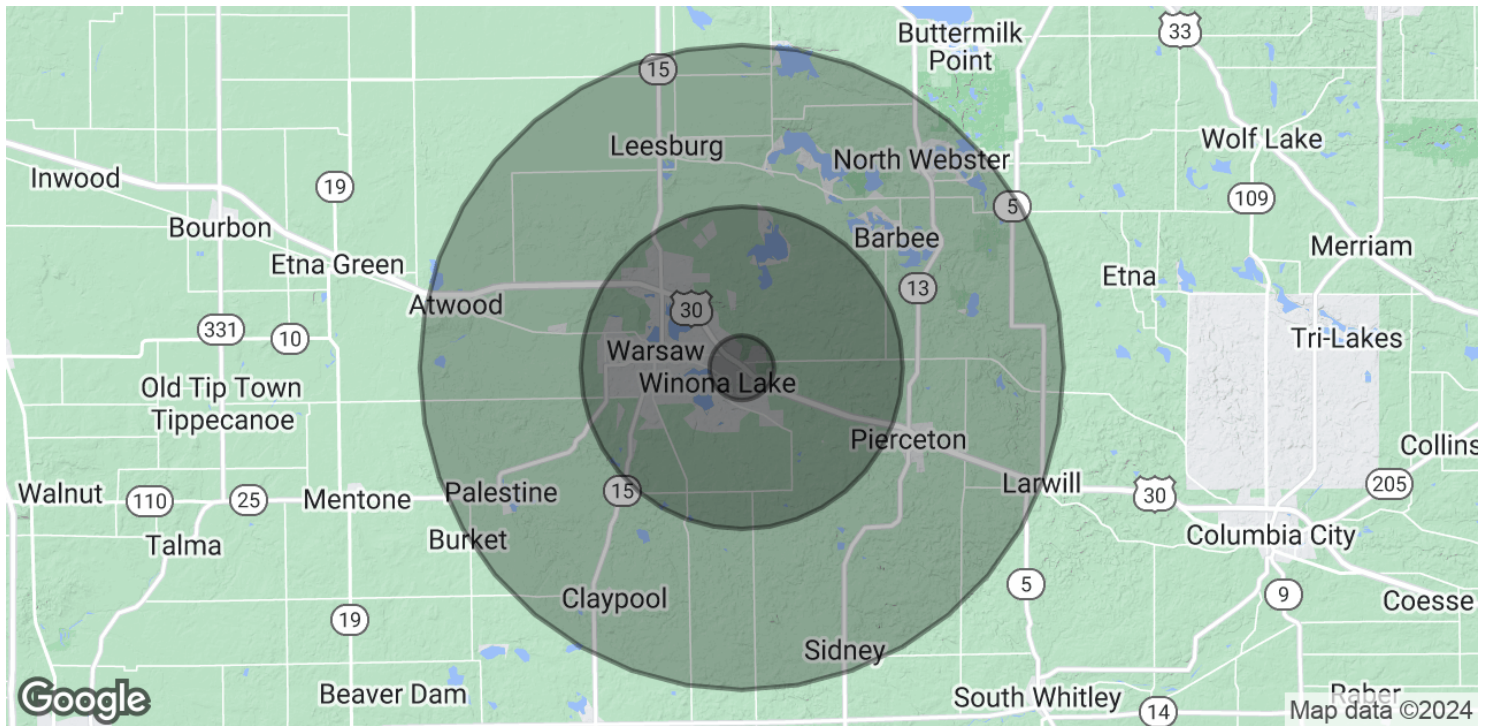


BRIAN PETERSON
REAL ESTATE



NEW WORLD CORP OF INDIANA 3534

3534 COMMERCE DRIVE, WARSAW, IN 46580



POPULATION	1 MILE	5 MILES	10 MILES
Total Population	47	25,347	52,983
Average Age	34.9	36.6	37.6
Average Age (Male)	32.8	35.2	36.5
Average Age (Female)	38.8	39.3	39.1

HOUSEHOLDS & INCOME	1 MILE	5 MILES	10 MILES
Total Households	19	10,323	21,289
# of Persons per HH	2.5	2.5	2.5
Average HH Income	\$54,842	\$58,138	\$59,815
Average House Value	\$137,447	\$185,030	\$175,933

* Demographic data derived from 2020 ACS - US Census

FOR MORE INFORMATION, CONTACT:

JAN ORBAN BROKER

JAN@BRIANPETERSONGROUP.COM
574.551.0121

BRIAN PETERSON

BPG@BRIANPETERSONGROUP.COM
574.268.1899

2008 E. CENTER STREET WARSAW, IN 46508 BRIANPETERSONGROUP.COM



BRIAN PETERSON
REAL ESTATE

