

**FOR LEASE**

## **FREMONT PROFESSIONAL CENTER**

753 N 35TH STREET, SEATTLE, WA 98103



### **OFFERING SUMMARY**

Available SF:	180 – 286 SF
Lease Rate:	\$600.00 – 950.00 per month (Gross)
Lot Size:	9,464 SF
Year Built:	1931
Building Size:	13,948 SF
Renovated:	1995
Zoning:	NC39-75 (M1)
Market:	Seattle
Submarket:	Fremont

### **PROPERTY OVERVIEW**

Individual Offices with shared waiting rooms, common kitchenettes, elevator served.

### **PROPERTY HIGHLIGHTS**

- Great Location
- Rare Individual Office Space
- Third Floor Balconies
- Perfect for Counselors, Therapist, Individual CPAs, Attorneys, etc.
- 97 Walk Score



**DAVID HALL, CCIM, CPM CANDIDATE**  
206.381.3883 x107  
david@corecommercialproperties.com

CORE Commercial Properties, Inc. | 10 East Allison Street | Seattle, WA 98102 | 206.381.3800 | corecommercialproperties.com

The information herein comes from sources deemed reliable but has not been independently verified by CORE Commercial Properties, Inc. No warranty or representation, expressed or implied is made as to the accuracy of the information herein, and it is submitted subject to errors, omissions, change of price, rental, or other conditions, withdrawal without notice, and to any special listing conditions, imposed by our principals.

# FREMONT PROFESSIONAL CENTER

753 N 35TH STREET, SEATTLE, WA 98103



## LEASE INFORMATION

Lease Type:	Gross	Lease Term:	Negotiable
Total Space:	180 - 286 SF	Lease Rate:	\$600.00 - \$950.00 per month

## AVAILABLE SPACES

SUITE	TENANT	SIZE	TYPE	RATE	DESCRIPTION
Suite 101A	Available	180 SF	Gross	\$600 per month	Individual Office with shared waiting area.
Suite 105	Available	239 SF	Gross	\$750 per month	Open single office with separated private waiting area.
Suite 108E	Available	217 SF	Gross	\$900 per month	Individual office with shared waiting area and shared kitchenette.
Suite 108F	Available	182 SF	Gross	\$750 per month	Individual Office with shared waiting area.



**DAVID HALL, CCIM, CPM CANDIDATE**

206.381.3883 x107

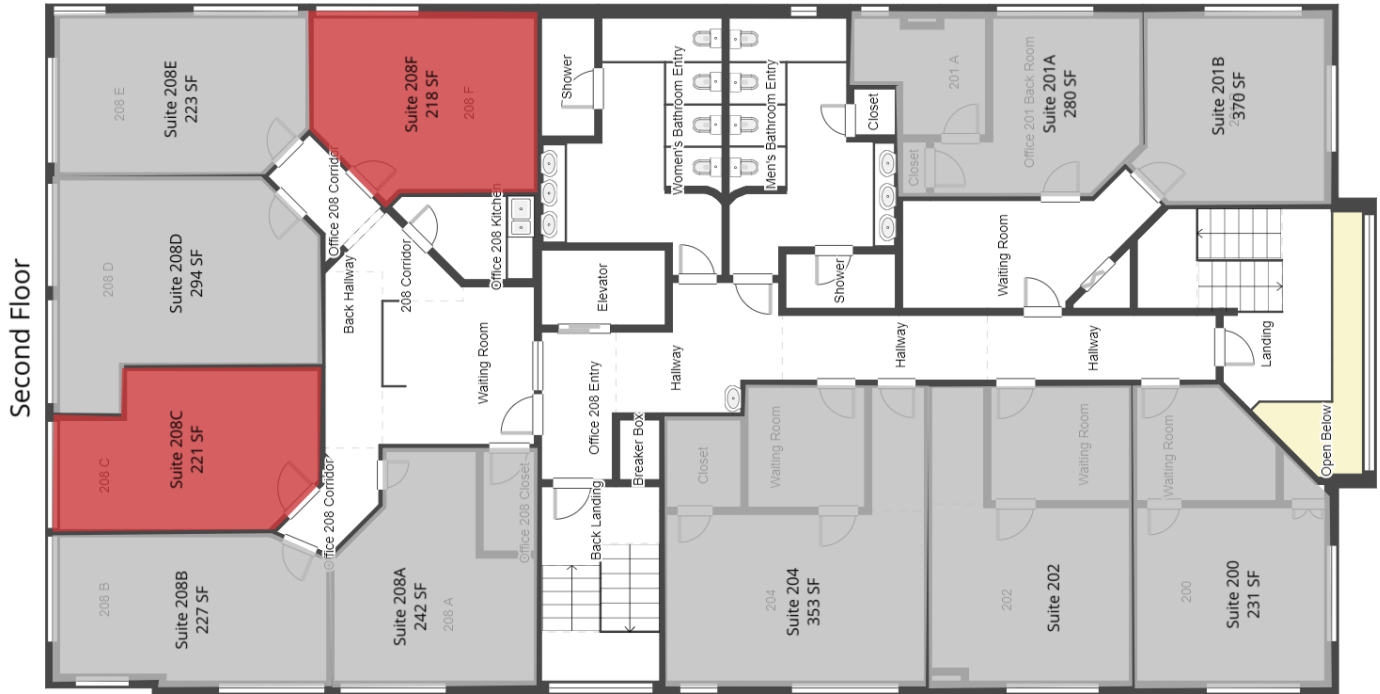
david@corecommercialproperties.com

CORE Commercial Properties, Inc. | 10 East Allison Street | Seattle, WA 98102 | 206.381.3800 | [corecommercialproperties.com](http://corecommercialproperties.com)

The information herein comes from sources deemed reliable but has not been independently verified by CORE Commercial Properties, Inc.. No warranty or representation, expressed or implied is made as to the accuracy of the information herein, and it is submitted subject to errors, omissions, change of price, rental, or other conditions, withdrawal without notice, and to any special listing conditions, imposed by our principals.

# FREMONT PROFESSIONAL CENTER

753 N 35TH STREET, SEATTLE, WA 98103



## LEASE INFORMATION

Lease Type:	Gross	Lease Term:	Negotiable
Total Space:	180 - 286 SF	Lease Rate:	\$600.00 - \$950.00 per month

## AVAILABLE SPACES

SUITE	TENANT	SIZE	TYPE	RATE	DESCRIPTION
Suite 208C	Available	221 SF	Gross	\$750 per month	Individual Office with shared waiting area.
Suite 208F	Available	218 SF	Gross	\$700 per month	Individual Office with shared waiting area.



**DAVID HALL, CCIM, CPM CANDIDATE**

206.381.3883 x107

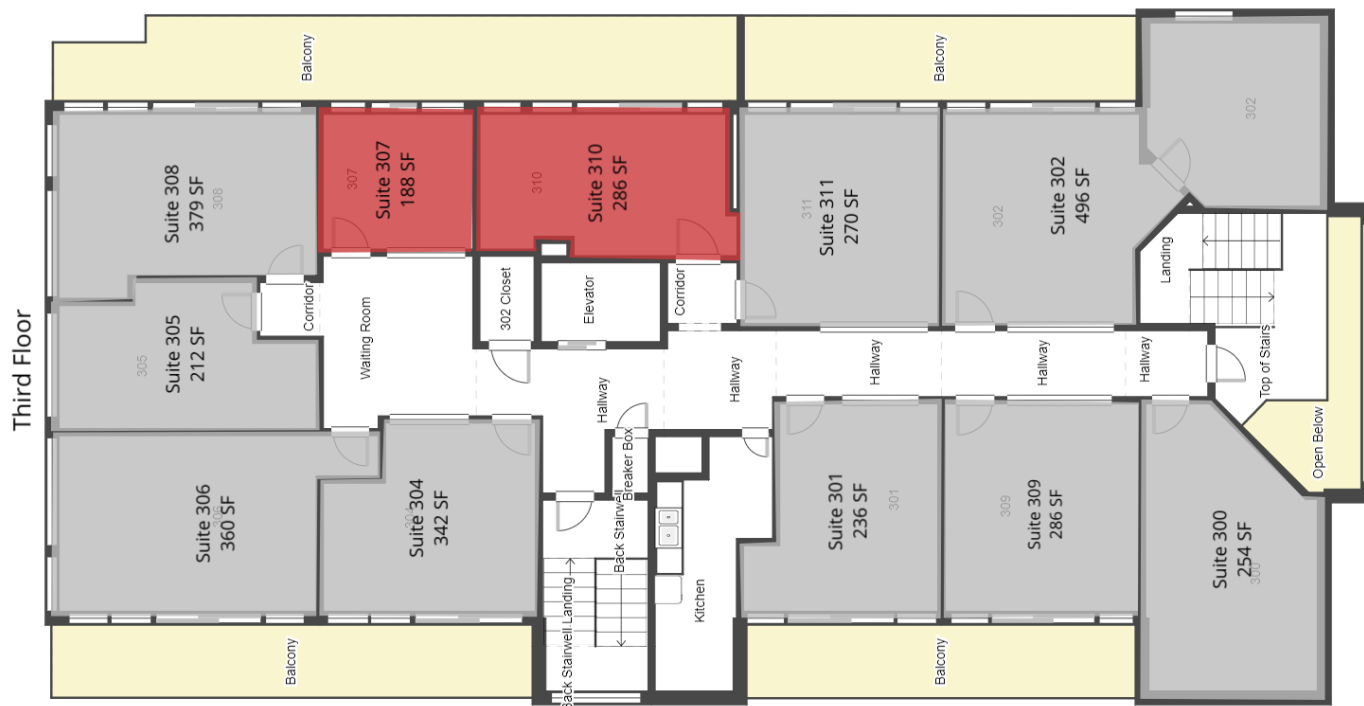
david@corecommercialproperties.com

CORE Commercial Properties, Inc. | 10 East Allison Street | Seattle, WA 98102 | 206.381.3800 | [corecommercialproperties.com](http://corecommercialproperties.com)

The information herein comes from sources deemed reliable but has not been independently verified by CORE Commercial Properties, Inc.. No warranty or representation, expressed or implied is made as to the accuracy of the information herein, and it is submitted subject to errors, omissions, change of price, rental, or other conditions, withdrawal without notice, and to any special listing conditions, imposed by our principals.

## FREMONT PROFESSIONAL CENTER

753 N 35TH STREET, SEATTLE, WA 98103



## LEASE INFORMATION

Lease Type:	Gross	Lease Term:	Negotiable
Total Space:	180 – 286 SF	Lease Rate:	\$600.00 – \$950.00 per month

## AVAILABLE SPACES

SUITE	TENANT	SIZE	TYPE	RATE	DESCRIPTION
Suite 307	Available	188 SF	Gross	\$700 per month	Single office with shared waiting room and balcony.
Suite 310	Available	286 SF	Gross	\$950 per month	Individual Office with deck.



DAVID HALL, CCIM, CPM CANDIDATE

206.381.3883 x107

david@corecommercialproperties.com



## FREMONT PROFESSIONAL CENTER

753 N 35TH STREET, SEATTLE, WA 98103



DAVID HALL, CCIM, CPM CANDIDATE  
206.381.3883 x107  
david@corecommercialproperties.com

# FREMONT PROFESSIONAL CENTER

753 N 35TH STREET, SEATTLE, WA 98103



**DAVID HALL, CCIM, CPM CANDIDATE**

206.381.3883 x107

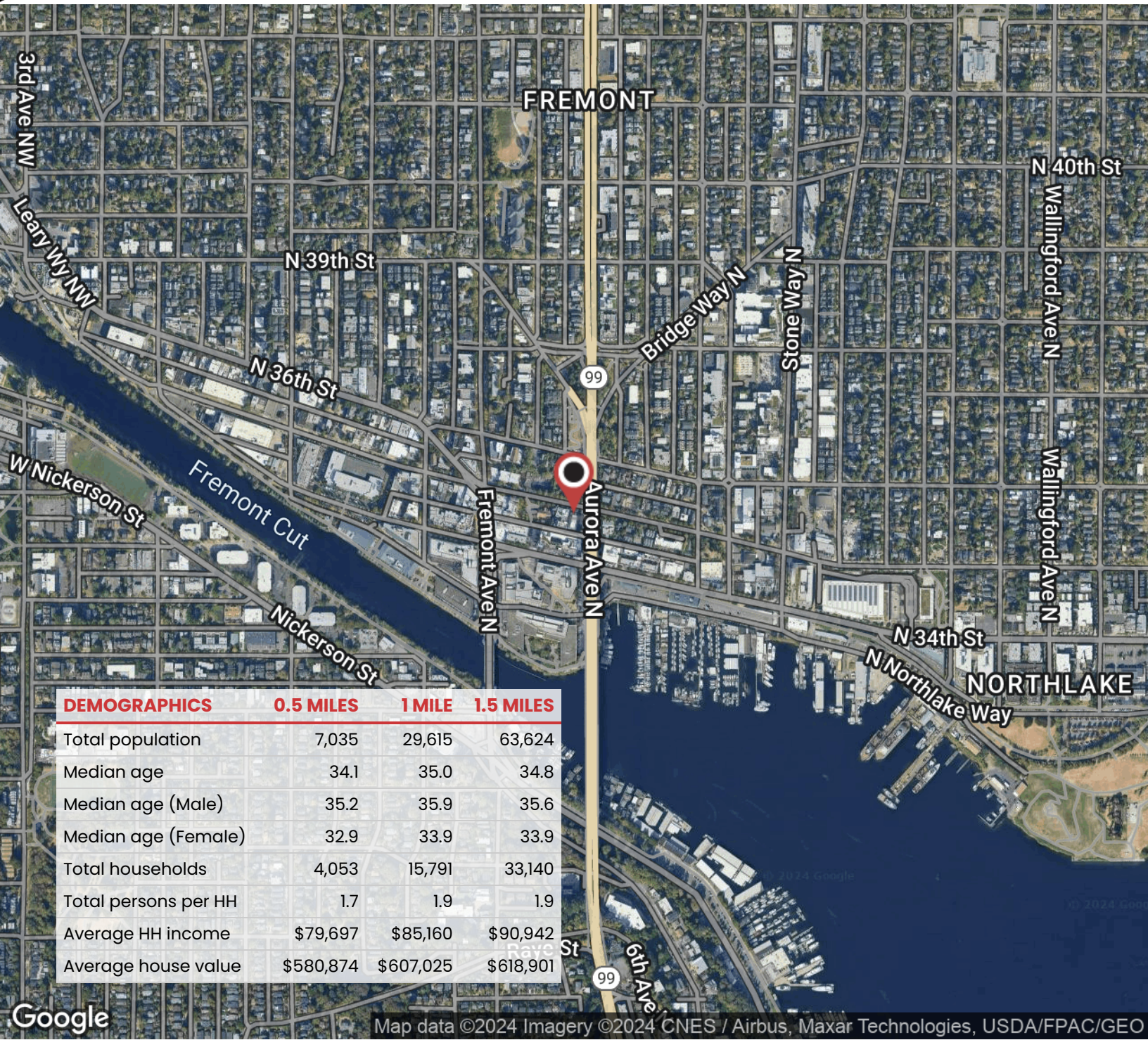
david@corecommercialproperties.com

CORE Commercial Properties, Inc. | 10 East Allison Street | Seattle, WA 98102 | 206.381.3800 | [corecommercialproperties.com](http://corecommercialproperties.com)



FREMONT PROFESSIONAL CENTER

753 N 35TH STREET, SEATTLE, WA 98103



DAVID HALL, CCIM, CPM CANDIDATE  
206.381.3883 x107  
david@corecommercialproperties.com

The information herein comes from sources deemed reliable but has not been independently verified by CORE Commercial Properties, Inc. No warranty or representation, expressed or implied is made as to the accuracy of the information herein, and it is submitted subject to errors, omissions, change of price, rental, or other conditions, withdrawal without notice, and to any special listing conditions, imposed by our principals.