

FOR LEASE

WOODLAWN PROFESSIONAL CENTER

6869 WOODLAWN AVE NE, SEATTLE, WA 98103



OFFERING SUMMARY

Available SF:	130 – 202 SF
Lease Rate:	\$750.00 – 900.00 per month (Gross)
Lot Size:	43,560 SF
Year Built:	1926
Building Size:	12,491 SF
Renovated:	2000
Zoning:	NC3-55 (M)
Market:	Seattle
Submarket:	Greenlake

PROPERTY OVERVIEW

Individual Offices with shared waiting rooms, common kitchenettes, elevator served.

PROPERTY HIGHLIGHTS

- Great Location
- Rare Individual Office Space
- Perfect for Counselors, Therapist, CPAs, Attorneys, etc.
- 95 Walk Score (Walkers Paradise)



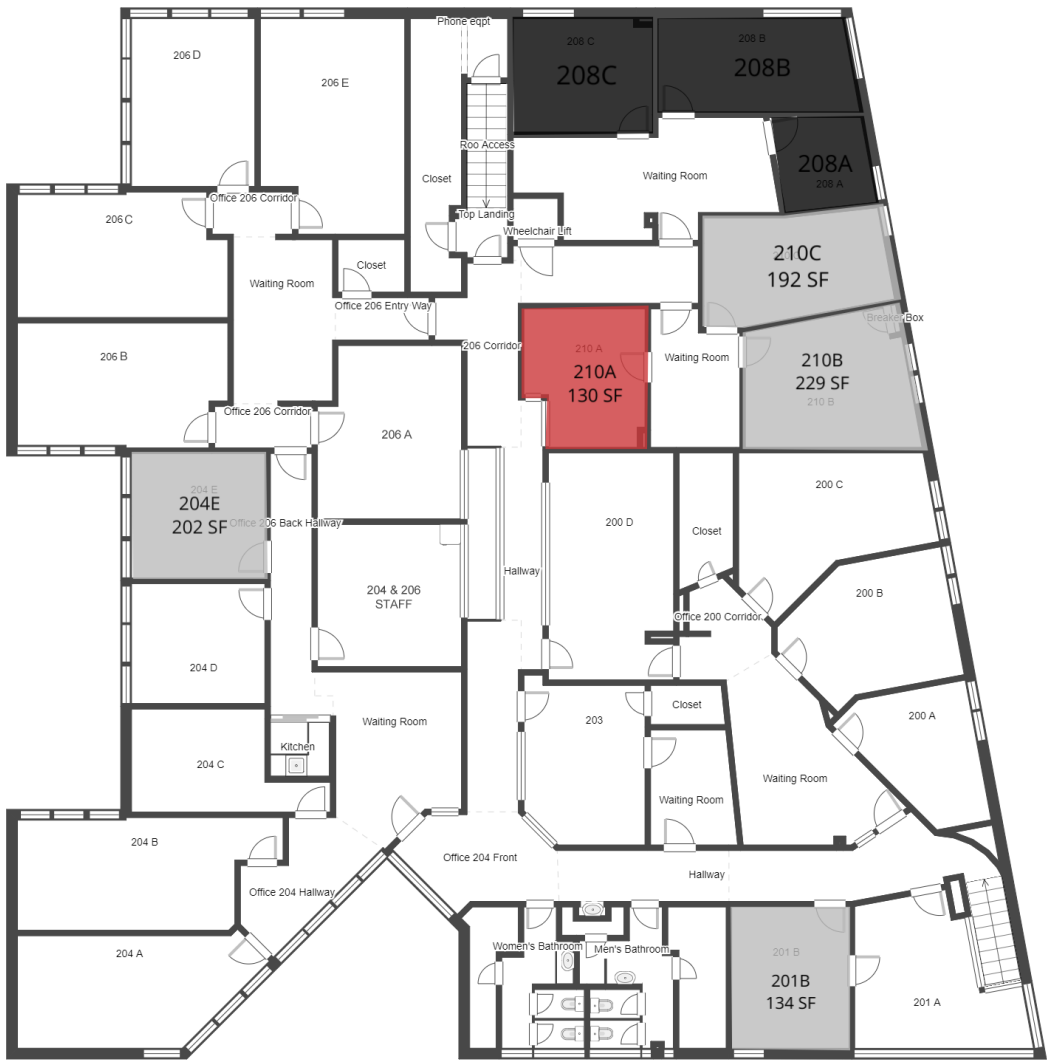
DAVID HALL, CCIM, CPM CANDIDATE
206.381.3883 x107
david@corecommercialproperties.com

CORE Commercial Properties, Inc. | 10 East Allison Street | Seattle, WA 98102 | 206.381.3800 | corecommercialproperties.com

The information herein comes from sources deemed reliable but has not been independently verified by CORE Commercial Properties, Inc. No warranty or representation, expressed or implied is made as to the accuracy of the information herein, and it is submitted subject to errors, omissions, change of price, rental, or other conditions, withdrawal without notice, and to any special listing conditions, imposed by our principals.

WOODLAWN PROFESSIONAL CENTER

6869 WOODLAWN AVE NE, SEATTLE, WA 98103



AVAILABLE SPACES

SUITE	TENANT	SIZE	TYPE	RATE	DESCRIPTION
Suite 210A	Available	130 SF	Gross	\$750 per month	Single Office with shared waiting room.



DAVID HALL, CCIM, CPM CANDIDATE
206.381.3883 x107
david@corecommercialproperties.com

WOODLAWN PROFESSIONAL CENTER

6869 WOODLAWN AVE NE, SEATTLE, WA 98103



AVAILABLE SPACES

SUITE	TENANT	SIZE	TYPE	RATE	DESCRIPTION
-------	--------	------	------	------	-------------



DAVID HALL, CCIM, CPM CANDIDATE
206.381.3883 x107
david@corecommercialproperties.com

WOODLAWN PROFESSIONAL CENTER

6869 WOODLAWN AVE NE, SEATTLE, WA 98103



DAVID HALL, CCIM, CPM CANDIDATE
206.381.3883 x107
david@corecommercialproperties.com

WOODLAWN PROFESSIONAL CENTER

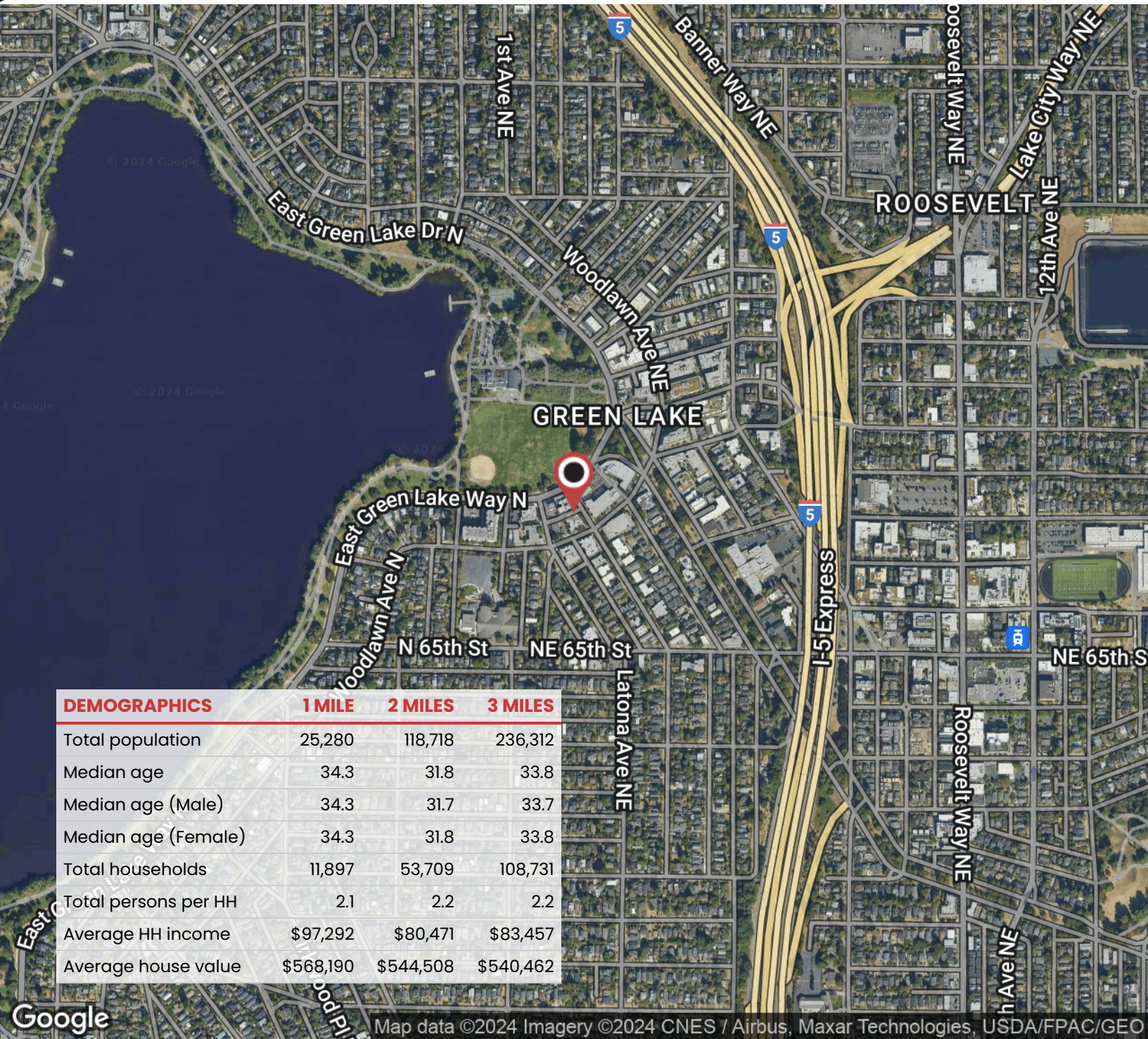
6869 WOODLAWN AVE NE, SEATTLE, WA 98103



DAVID HALL, CCIM, CPM CANDIDATE
206.381.3883 x107
david@corecommercialproperties.com

WOODLAWN PROFESSIONAL CENTER

6869 WOODLAWN AVE NE, SEATTLE, WA 98103



DEMOGRAPHICS	1 MILE	2 MILES	3 MILES
Total population	25,280	118,718	236,312
Median age	34.3	31.8	33.8
Median age (Male)	34.3	31.7	33.7
Median age (Female)	34.3	31.8	33.8
Total households	11,897	53,709	108,731
Total persons per HH	2.1	2.2	2.2
Average HH income	\$97,292	\$80,471	\$83,457
Average house value	\$568,190	\$544,508	\$540,462



DAVID HALL, CCIM, CPM CANDIDATE
206.381.3883 x107
david@corecommercialproperties.com