



For Sale



For more information please contact:

David Havens

Senior Broker

417.877.7900 x101

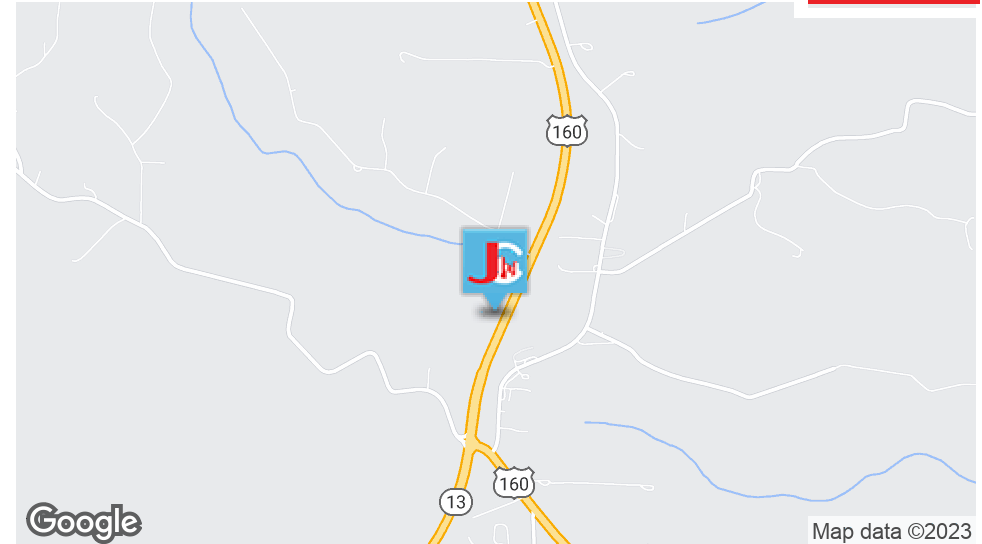
dhavens@jaredcommercial.com



3583 US-160, REEDS SPRING, MO 65737

EXECUTIVE SUMMARY

For Sale



OFFERING SUMMARY

Sale Price:	\$175,000
Building Size:	5,592 SF
Available SF:	5,592 SF
Lot Size:	0.73 Acres
Price / SF:	\$31.29
Zoning:	Commercial
Market:	Reeds Springs, MO

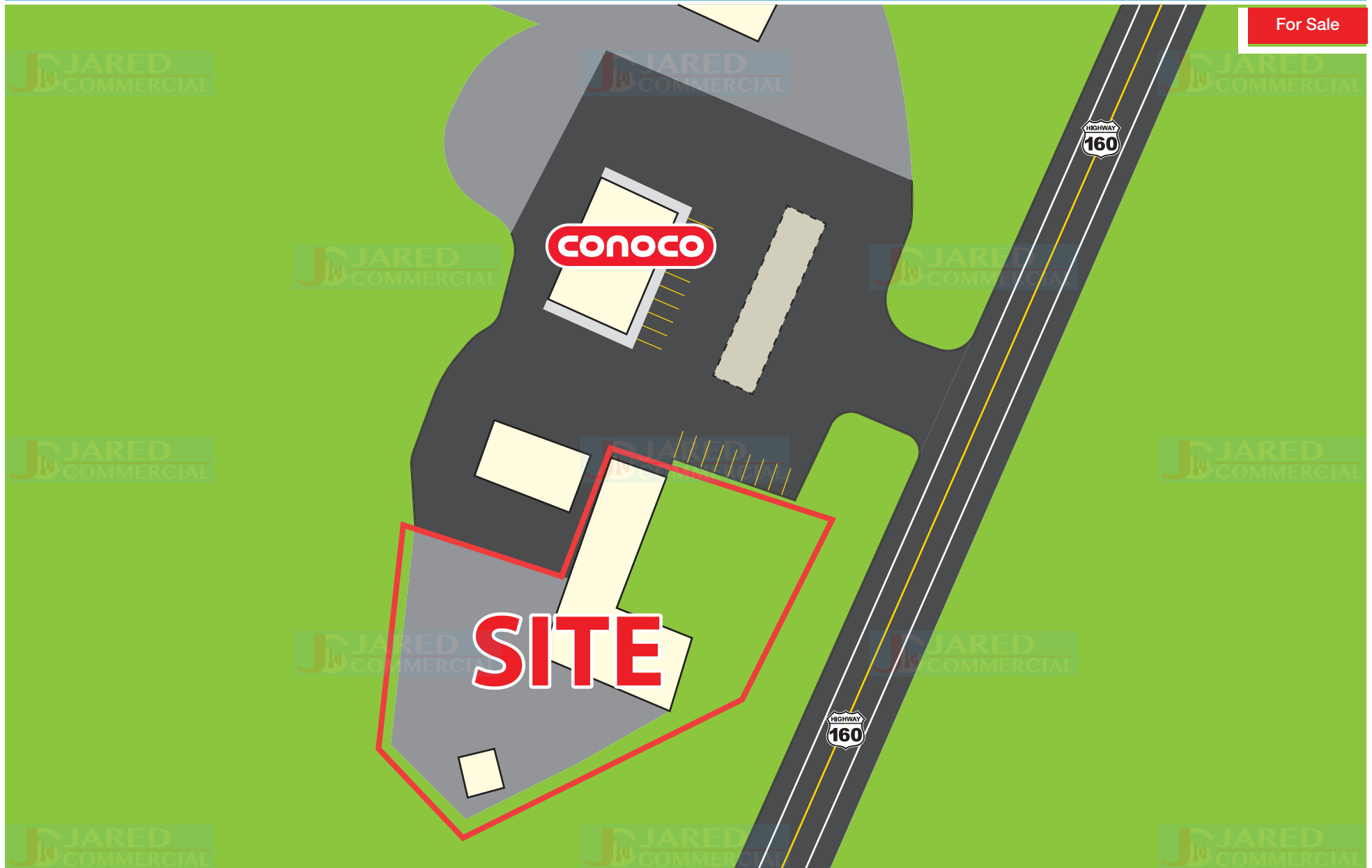
PROPERTY OVERVIEW

5,592 SqFt building with a 576 SqFt shop area. Previous business was an indoor archery range.

PROPERTY HIGHLIGHTS



For Sale



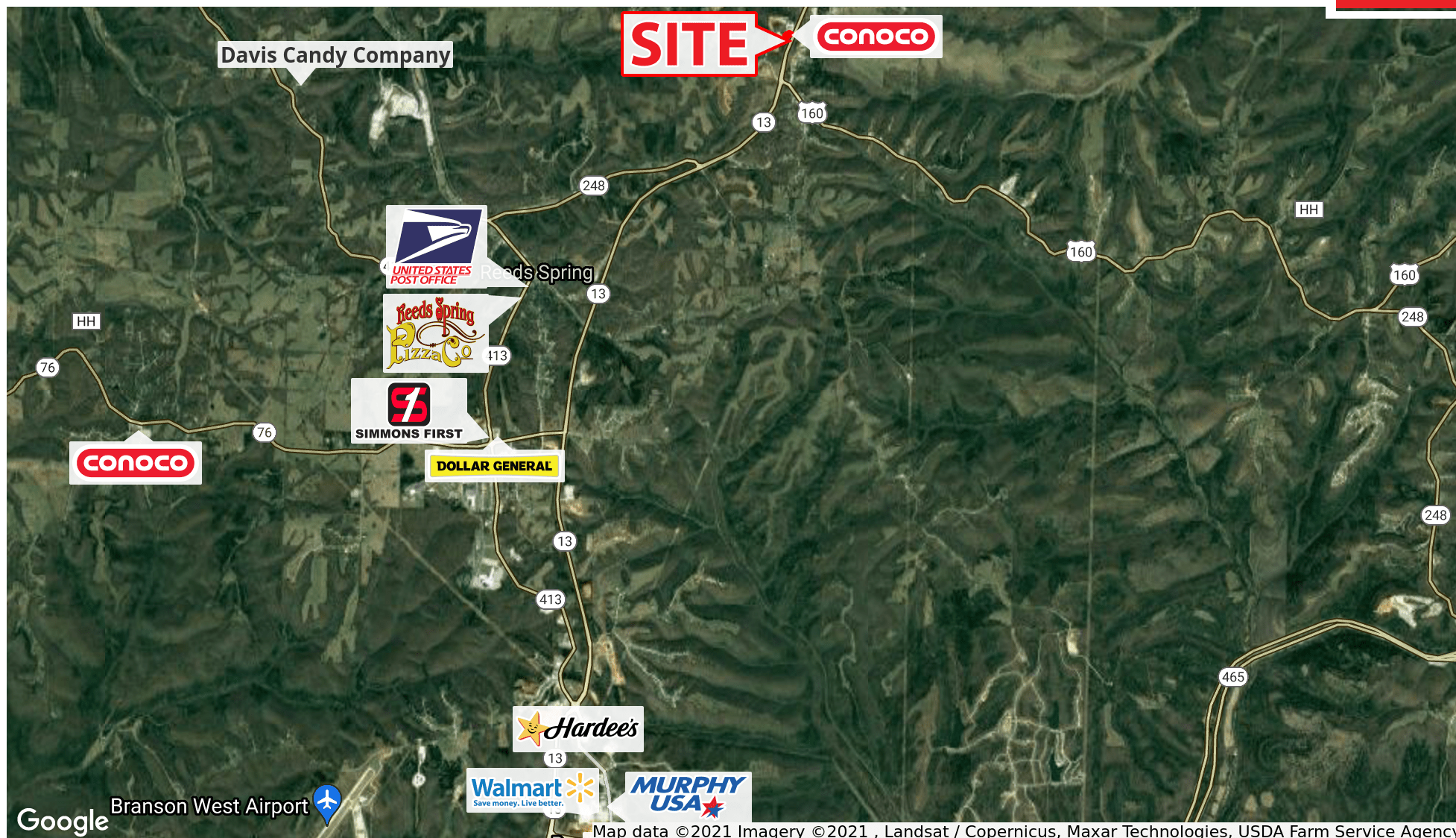


For Sale





For Sale



Map data ©2021 Imagery ©2021 , Landsat / Copernicus, Maxar Technologies, USDA Farm Service Agency

3583 US-160



3583 US-160, REEDS SPRING, MO 65737

TRAFFIC COUNT MAP

For Sale



2870 S Ingram Mill Rd | Springfield, MO 65804 | 417.877.7900 | Fax: 417.877.7689 | www.jaredcommercial.com

The information listed above has been obtained from sources we believe to be reliable, however, we accept no responsibility for its correctness.





3583 US-160, REEDS SPRING, MO 65737

DEMOGRAPHICS MAP & REPORT

For Sale

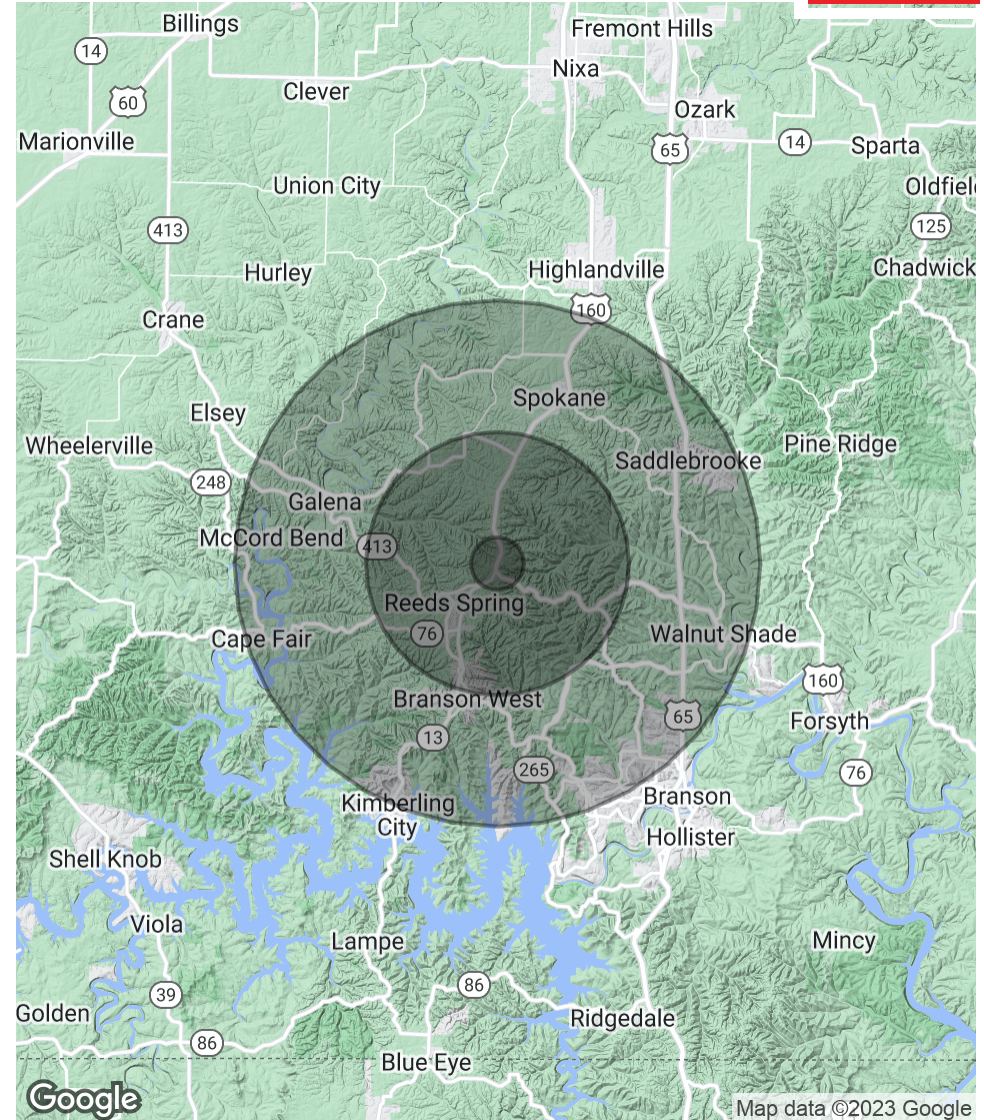
POPULATION

	1 MILE	5 MILES	10 MILES
Total Population	265	7,009	29,975
Average Age	42.5	41.1	42.6
Average Age (Male)	46.1	43.4	42.1
Average Age (Female)	38.8	39.1	43.1

HOUSEHOLDS & INCOME

	1 MILE	5 MILES	10 MILES
Total Households	104	2,788	12,408
# of Persons per HH	2.5	2.5	2.4
Average HH Income	\$49,702	\$50,954	\$53,782
Average House Value		\$133,626	\$162,991

* Demographic data derived from 2020 ACS - US Census





For Sale



DAVID HAVENS

Senior Broker

dhavens@jaredcommercial.com

Direct: 417.877.7900 x101 | **Cell:** 417.350.4771

MO #2015037234

EDUCATION

Bachelors Degree in Business Administration from University of Northern Colorado.
Entrepreneurship Certificate from University of Northern Colorado
CCIM Candidate
Missouri and Colorado Real Estate License
Business Brokerage Certificate- VR

MEMBERSHIPS

CCIM, ICSC, NAR, MAR.

Jared Commercial
2870 S Ingram Mill Rd Ste A
Springfield, MO 65804
417.877.7900