



FOR SALE

■ 155 NW Central Park Plaza

155 NW Central Park Plaza

Port St. Lucie, FL 34986

PROPERTY OVERVIEW

Rare 3 parcel package zoned Commercial General. Zoning allows for office, hotel and retail uses. Just off of the high volume St. Lucie West Blvd corridor.

LOCATION OVERVIEW

Convenient St. Lucie West location, one block north of St. Lucie West Blvd. off NW Central Park Plaza. Contiguous to Shoppes of St Lucie West anchored by Publix, Burlington, LA Fitness, & Academy Sports.

OFFERING SUMMARY

Land Size: 2.99 Acres
Zoning: Commercial General, City of Port St Lucie
Utilities: St. Lucie West Services District

[Click Here for Permitted Uses](#)

SALE PRICE

Call For Pricing

MIKE YUROCKO,
CCIM
VICE PRESIDENT/BROKER
Mobile 772.538.2841
my@slccommercial.com

772.220.4096 | slccommercial.com



SLC Commercial
Realty & Development



The information contained herein has been obtained from sources believed to be reliable, but no warranty or representation, expressed or implied, is made. All sizes and dimensions are approximate. Any prospective buyer should exercise prudence and verify independently all significant data and property information. This is NOT an offer of sub-agency or co-brokerage.

Property Details

OFFICE/RETAIL DEVELOPMENT SITE

FOR SALE

SALE PRICE

CALL FOR PRICING

Location Information

Street Address 155 NW Central Park Plaza
City, State, Zip Port St. Lucie, FL 34986
County/Township Saint Lucie

Zoning / Land Use Details

Zoning Commercial General, City of Port St Lucie
Permitted Use See Below

[Click Here for Permitted Uses](#)

Property Details

Property Type Land
Lot Size 2.99 Acres
Number Of Lots 3
APN# 3323-810-0005-000-3
3323-810-0006-000-0
3323-810-0007-000-7

Utilities

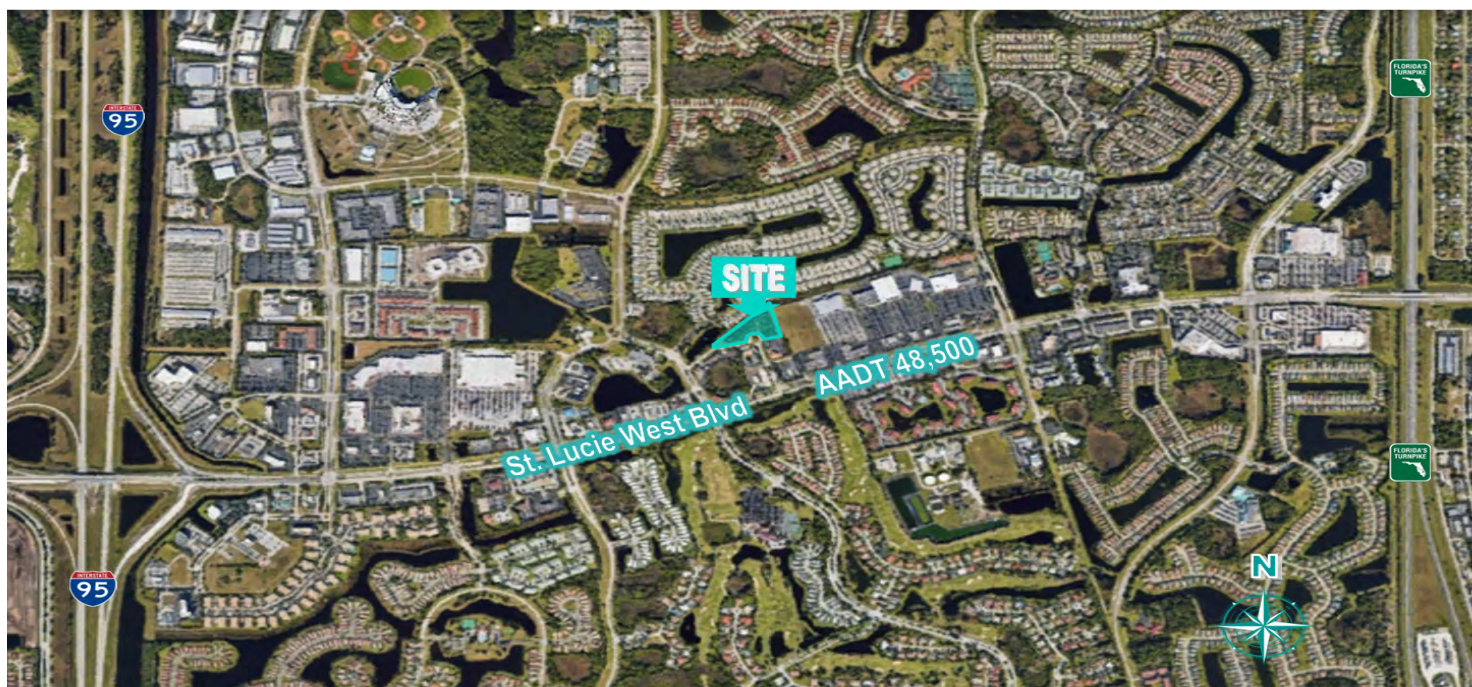
Water St Lucie West Services District To Site
Sewer St Lucie West Services District To Site
Cable To Site
Telephone To Site
Electricity Florida Power & Light To Site



Additional Photos

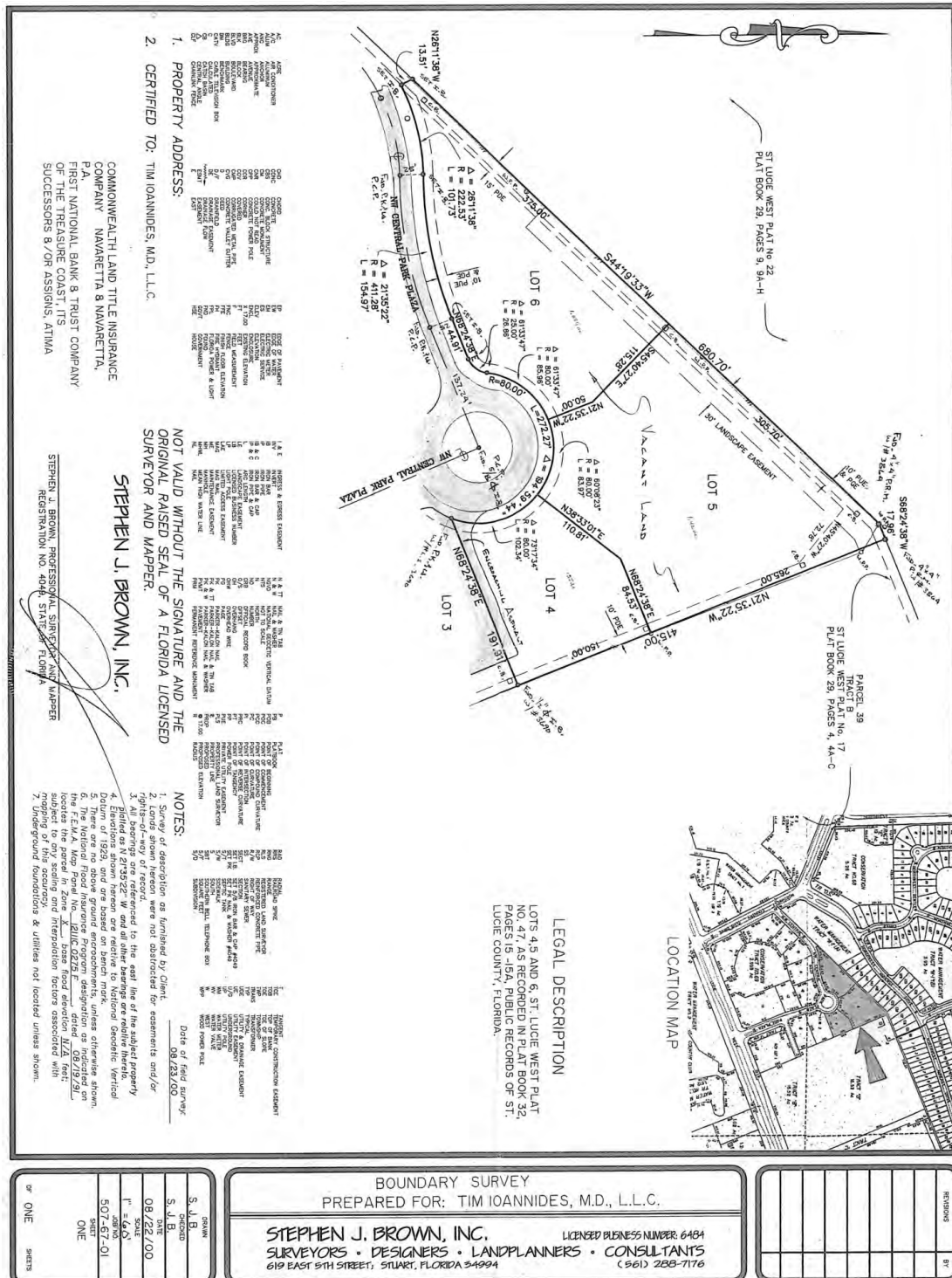
OFFICE/RETAIL DEVELOPMENT SITE

FOR SALE



OFFICE/RETAIL DEVELOPMENT SITE

FOR SALE



Retail Map

OFFICE/RETAIL DEVELOPMENT SITE

FOR SALE



Map data ©2023 Imagery ©2023 Airbus, Maxar Technologies, U.S. Geological Survey

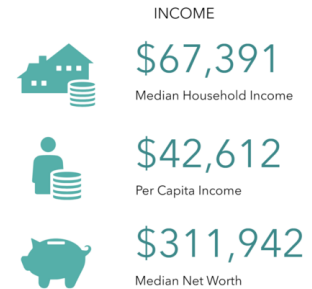
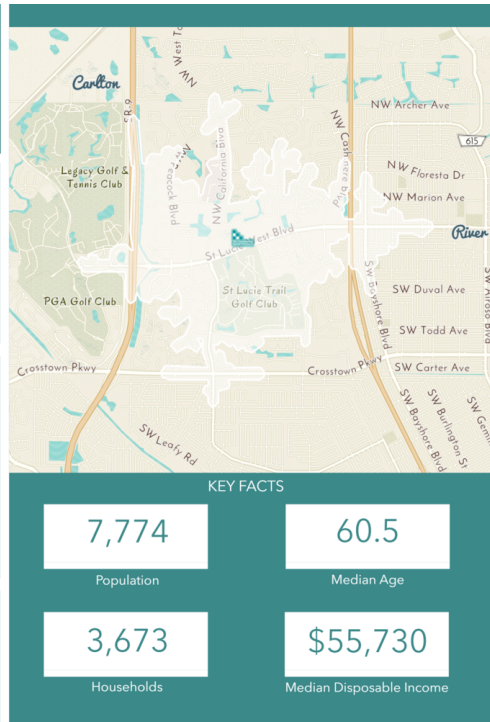
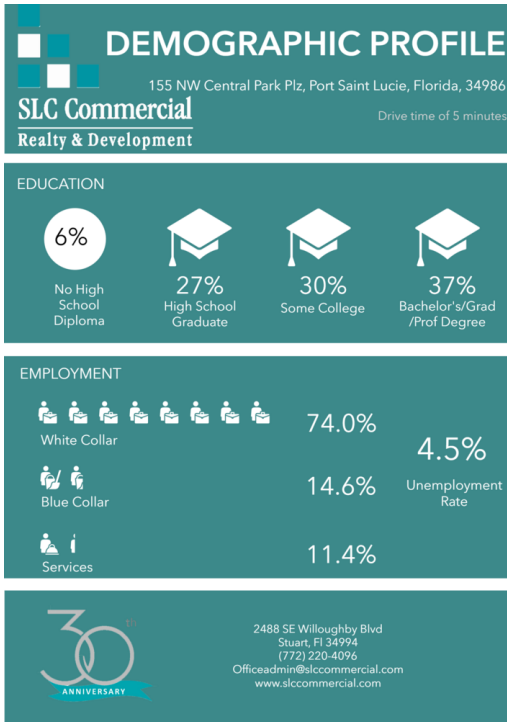


The information contained herein has been obtained from sources believed to be reliable, but no warranty or representation, expressed or implied, is made. All sizes and dimensions are approximate. Any prospective buyer should exercise prudence and verify independently all significant data and property information. This is NOT an offer of sub-agency or co-brokerage.

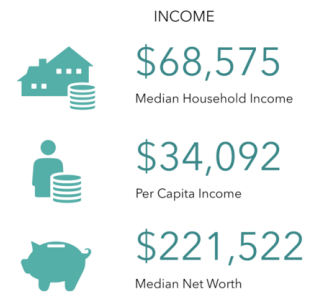
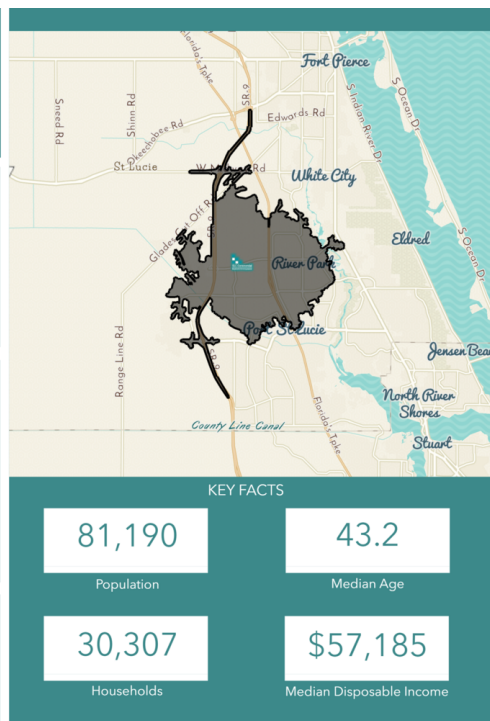
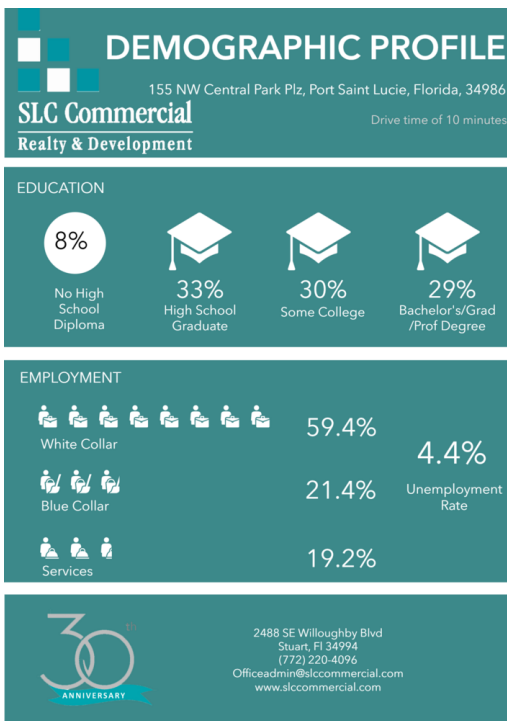
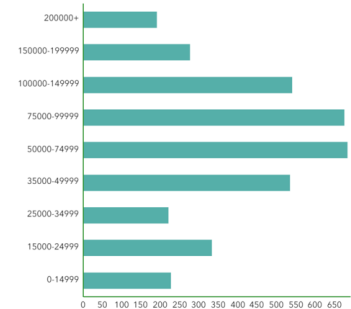
Drive Time Demographics

OFFICE/RETAIL DEVELOPMENT SITE

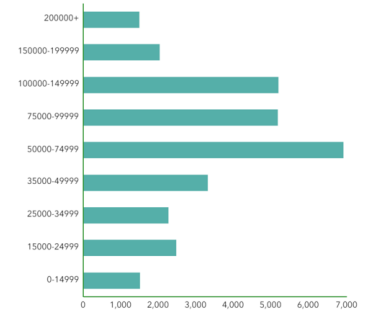
FOR SALE



HOUSEHOLD INCOME (\$)



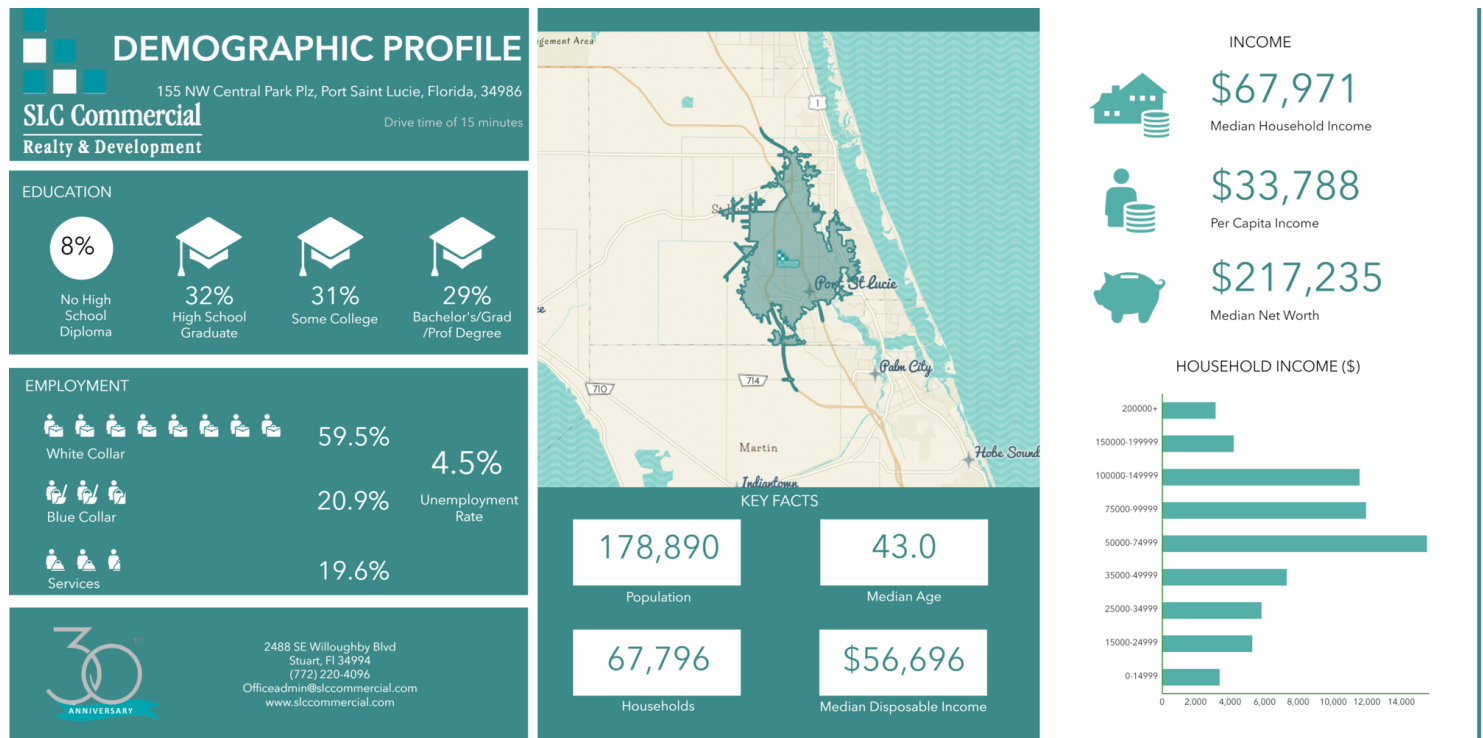
HOUSEHOLD INCOME (\$)



Drive Time Demographics

OFFICE/RETAIL DEVELOPMENT SITE

FOR SALE



Disclaimer

OFFICE/RETAIL DEVELOPMENT SITE

FOR SALE

This presentation package has been prepared by the company representing the property for informational purposes only and does not purport to contain all information necessary to reach a purchase decision.

The information herein has been given by the Owner or other sources believed to be reliable, but it has not necessarily been independently verified by the Company representing the property and neither its accuracy nor its completeness is guaranteed.

This information is subject to errors, omissions, changes, prior sale or withdrawal without notice by the Company representing the property and does not constitute a recommendation, endorsement or advice as to the value for the purchase of any property. Each prospective lessee or purchaser is to rely upon his/her own investigation, evaluation and judgment as to the advisability of leasing or purchasing the property.

Furthermore, any financial information and calculations presented in this analysis are believed to be accurate, but are not guaranteed and are intended for the purposes of projection and analysis only. The user of this financial information contained herein should consult a tax specialist concerning his/her particular circumstances before making any investment.

